

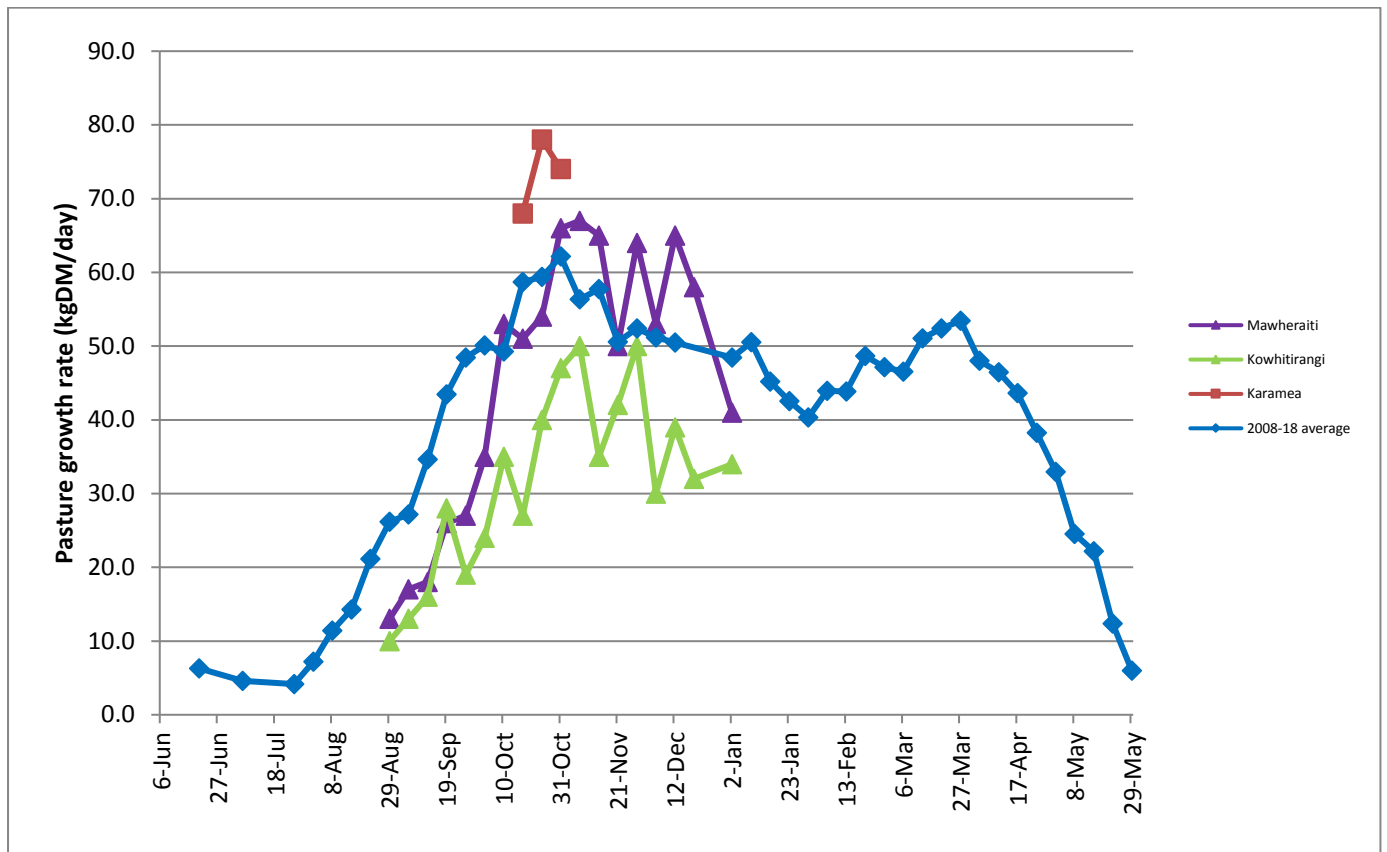
Westland Monitor Farm Project

Weekly Update as at week ending Wednesday 9th January 2019

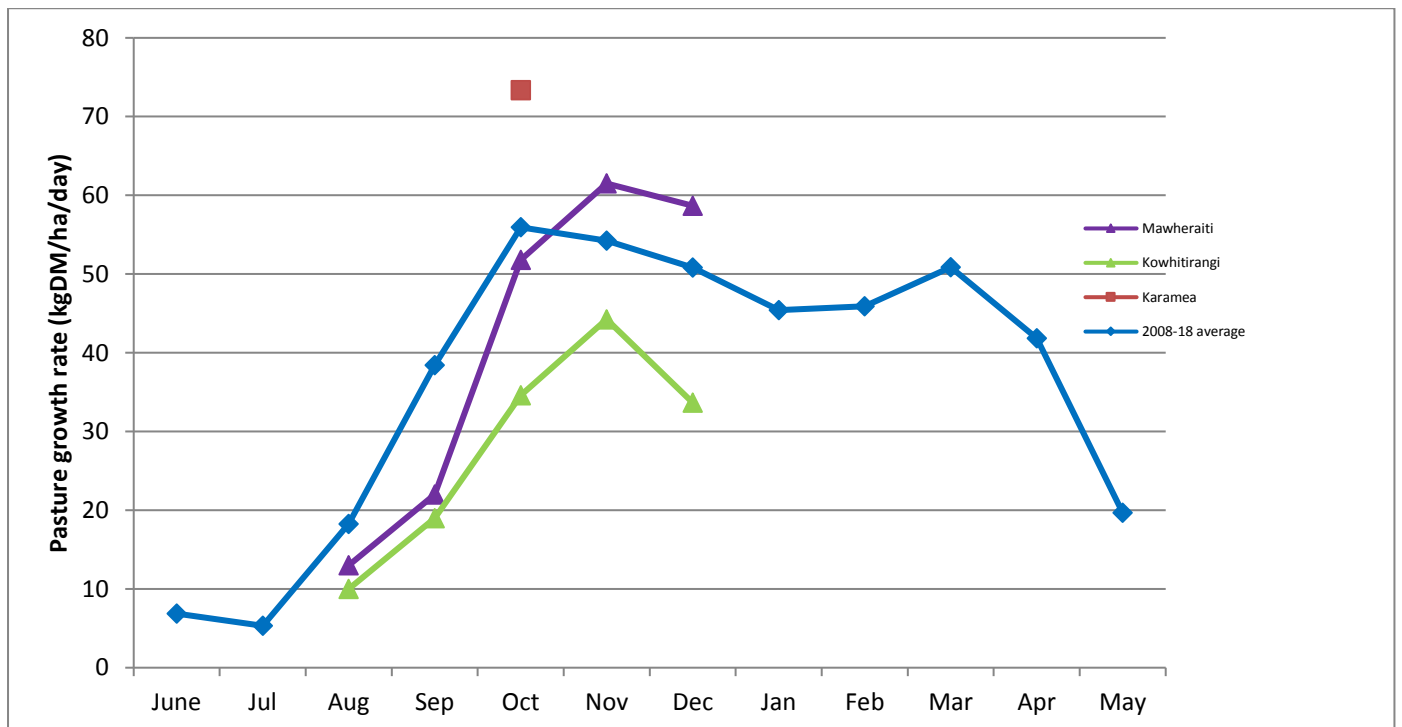
Farm Summary

	Mawheraiti	Kowhitirangi
Average cover (kg DM/ha)	2245	2211
APC (26 December)	2275	2169
Rotation length (days)	23	26
Stocking rate	2.9	2.3
Percentage in milk	100	100
Milksolids kg/cow	1.75	1.72
Milksolids kg/ha	4.3	3.5
MS/cow (season to date)	231	234
MS/ha (season to date)	581	476
N (kg/ha) year to date	78	158
Current N application rate kg N/ha	28	9
DM%	16.8	16.7
Pasture ME	12.7	12.7
Pasture NDF	42.2	47.9
Pasture CP	18.8	20.8
Target Intake (kg DM/cow/d)	20	20
Supplement (kg/cow/day)		1.8
Soil temperature (°C)	20.7	25
Growth Rate (kg DM/day)	41	34
Rainfall	0	38
Conditions for farmwalk	Very hot	Very hot
Comments		

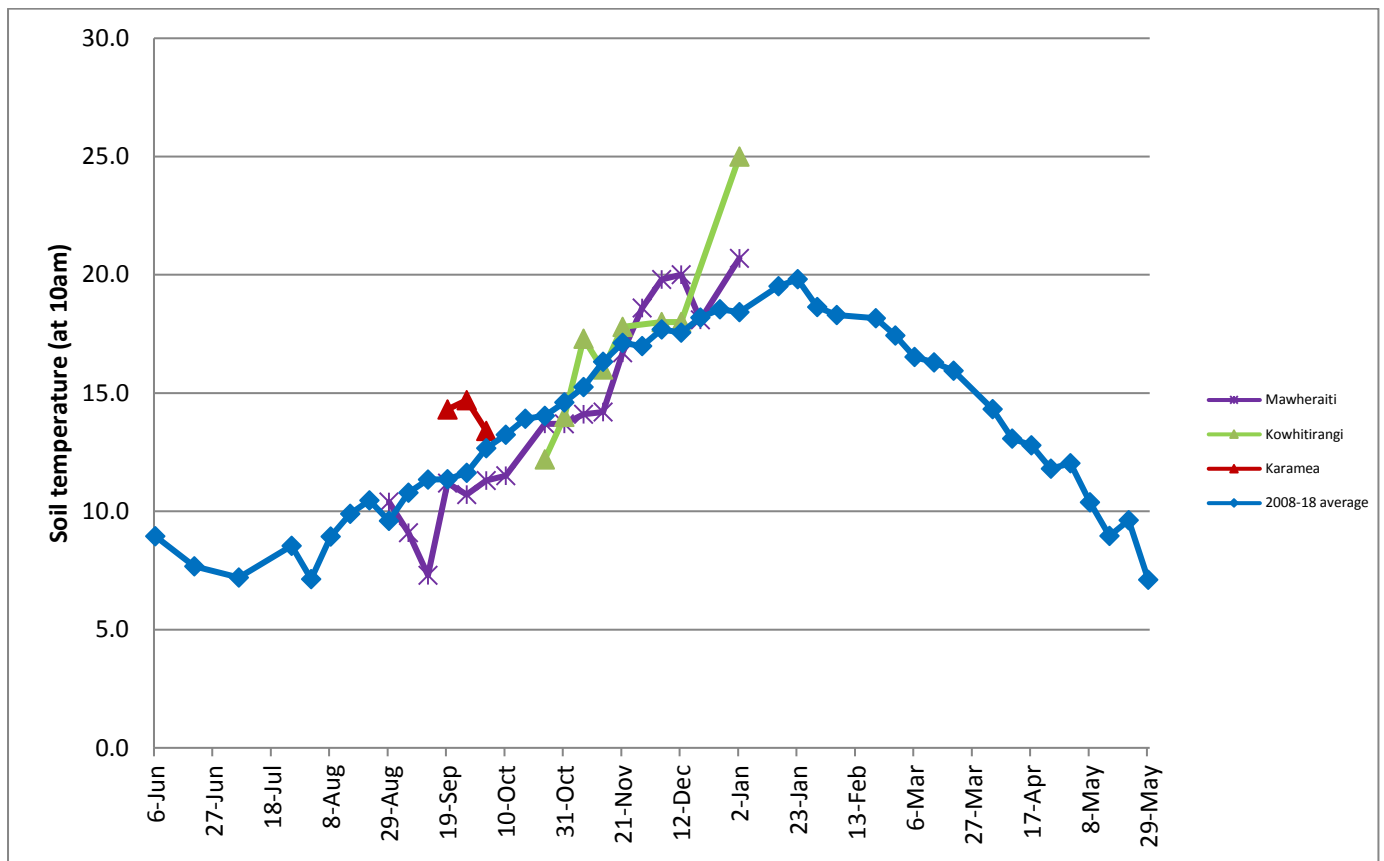
Weekly Pasture Growth Rates



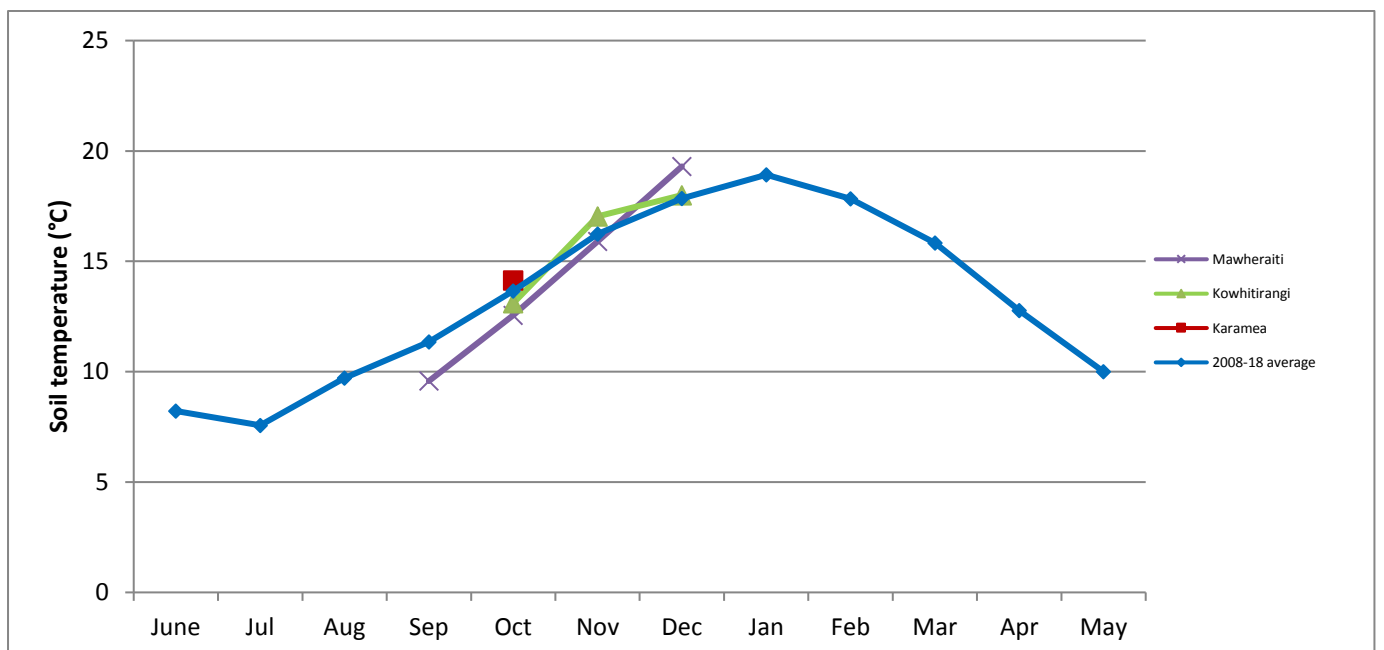
Monthly Pasture Growth Rates



Weekly Soil Temperature



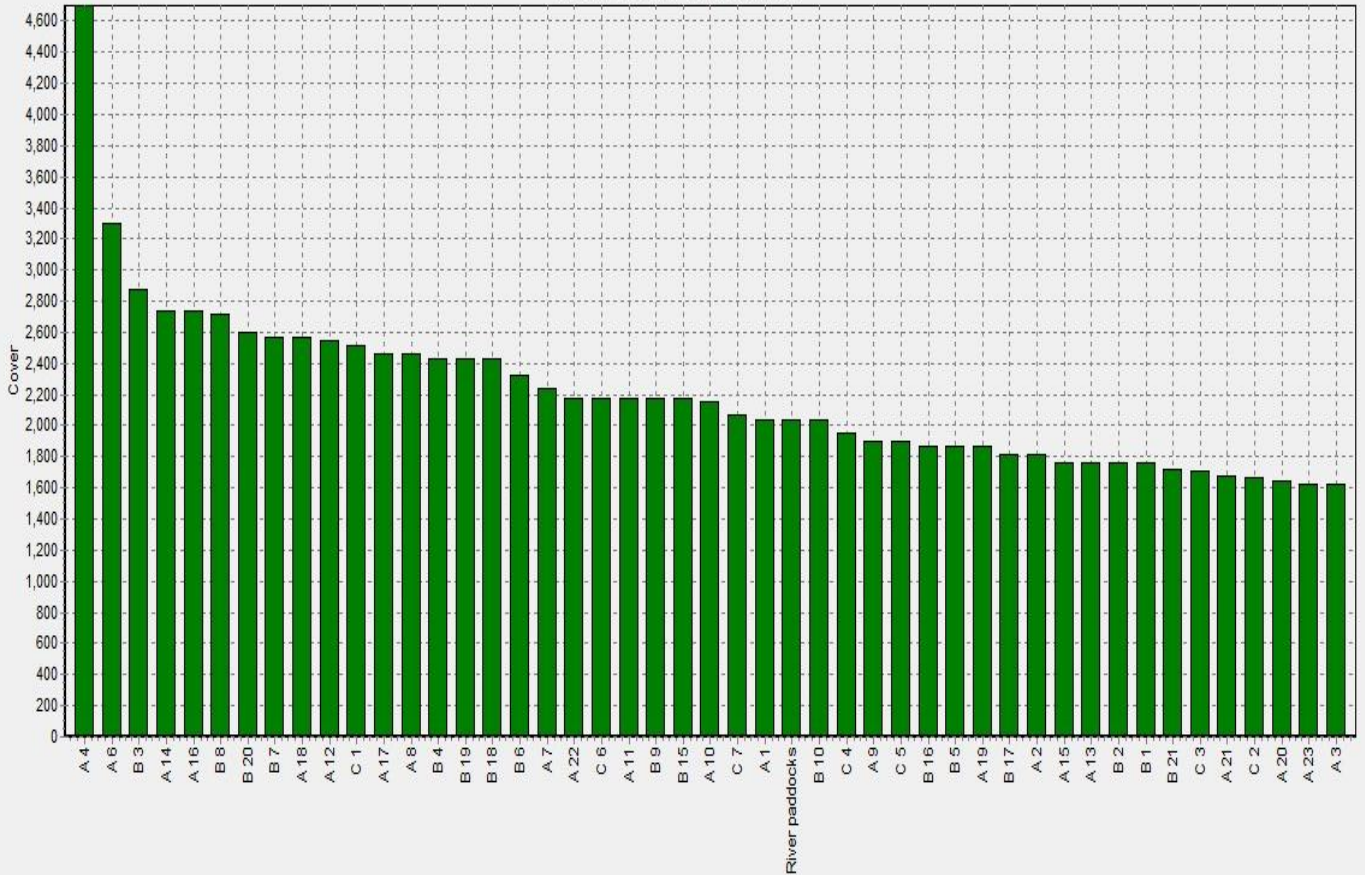
Monthly Soil Temperature



Mawheraiti



Kowhitirangi



Mawheraiti

Description	Date	RPM	% DM	% Prot	% Lipid	% ADF	% NDF	Sol Sugar	OMD %	MJME/kg
Paddock 13	7/9/2018	10.3	17.7	30.1	4.6	18.7	41.4	13.0	92.2	>12.7
Paddock 12	1/10/2018	14.0	13.5	27.7	3.7	21.8	47.1	13.9	>85	>12.7
Paddock 25	5/11/2018	14.6	13.7	22.7	4.3	23.0	43.8	15.1	89.3	>12.7
Paddock 4	4/12/2018	17.4	16.8	18.8	3.6	8.5	23.5	18.2	>85	12.7

Kowhitirangi

Description	Date	RPM	% DM	% Prot	% Lipid	% ADF	% NDF	Sol Sugar	OM D %	MJME /kg
Paddock 5	7/9/2018		17.4	26.8	4.9	18.9	39.3	18.2	91.6	13.4
Paddock 14	2/10/2018	12.0	15.1	22.4	4.4	20.7	43.2	18	>85	>12.7
Paddock 10	7/11/2018	11.8	15.8	27.3	4.0	21.2	47.6	9.2	90.4	13.2
Paddock 3	5/12/2018	8.9	16.7	20.8	4.2	22.8	47.9	13	>85	12.7