

# Westland Monitor Farm Project

Weekly Update as at week ending Wednesday 1<sup>st</sup> April 2020

## CO Comment

By now we should have had some time to come to grips with some of the ways Covid-19 may affect our businesses.

Dealing with COVID-19 is unlike anything we have dealt with before. And we need to change the way we do things on dairy farms whether we are two people or 10 - there must be nowhere on farm that facilitates the spread of COVID-19.

The key things to remember are 2m separation at all times and wash your hands.

Keeping everyone in the farm team informed about the new way of doing things is critical. Work through the template at <https://www.dairynz.co.nz/business/adverse-events/coronavirus-covid-19-information/> with your team (outside, with a 2m gap between each person or using technology such as Skype, Facetime or Zoom), then put it up where everyone can see it in the farm dairy. The important thing is to have the discussion and agree the new rules.

It is important to use your judgement with jobs on farm. Think about how essential the task is to your business, remember farming is an essential service, but that does not mean business as usual. Ask yourself if you can undertake the task and stay within the Government guidelines with the activity. This applies when bringing contractors and staff into the equation, particularly when they are not in your 'bubble'.

Keep safe and remember you can contact [the West Coast DairyNZ team](#) if you need a chat.

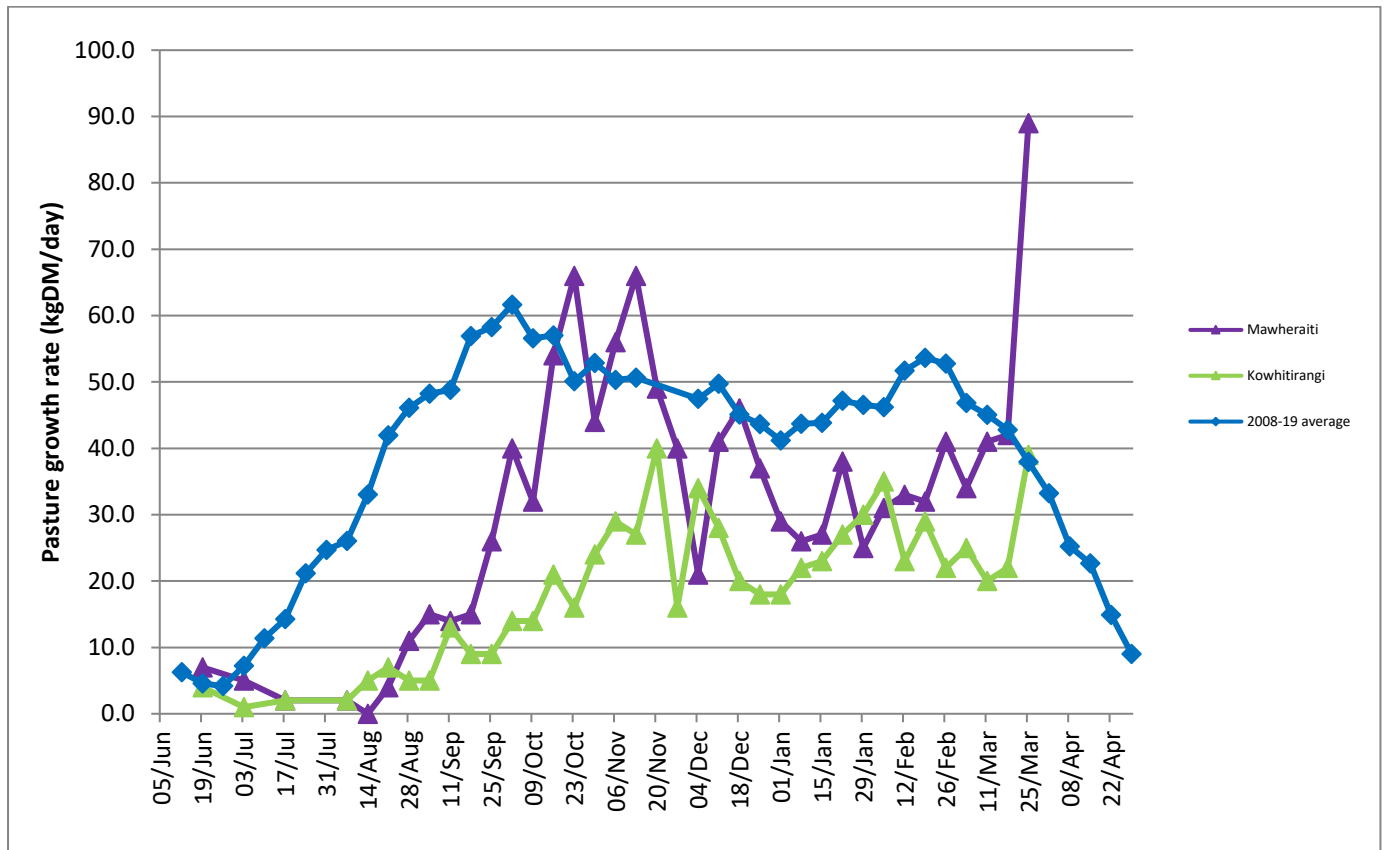
## Farm Summary

	Mawheraiti	Kowhitirangi
Average cover (kg DM/ha)	2421	2095
APC (25 March)	2069	1977
Rotation length (days)	28	27
Stocking rate	2.3	2.3
Percentage in milk	100	100
Milksolids kg/cow	1.45	1.63
Milksolids kg/ha	3.4	3.4
MS/cow (season to date)	350	393
MS/ha (season to date)	878	783
N (kg/ha) year to date	215	207
Current N application rate kg N/ha	25	-
	2 Mar	4 Mar
DM%	11.4	11.6
Pasture ME	11.5	11.9
Pasture NDF	48.4	45.0
Pasture CP	28.5	29.5
Target Intake (kg DM/cow/d)	17	18
Supplement (kg/cow/day)	1.4	2
Soil temperature (°C)	13.8	13
Growth Rate (kg DM/day)	89*	39
Rainfall	33	25
Conditions for farmwalk	Getting colder. The odd light frost slowing round down with silage	-

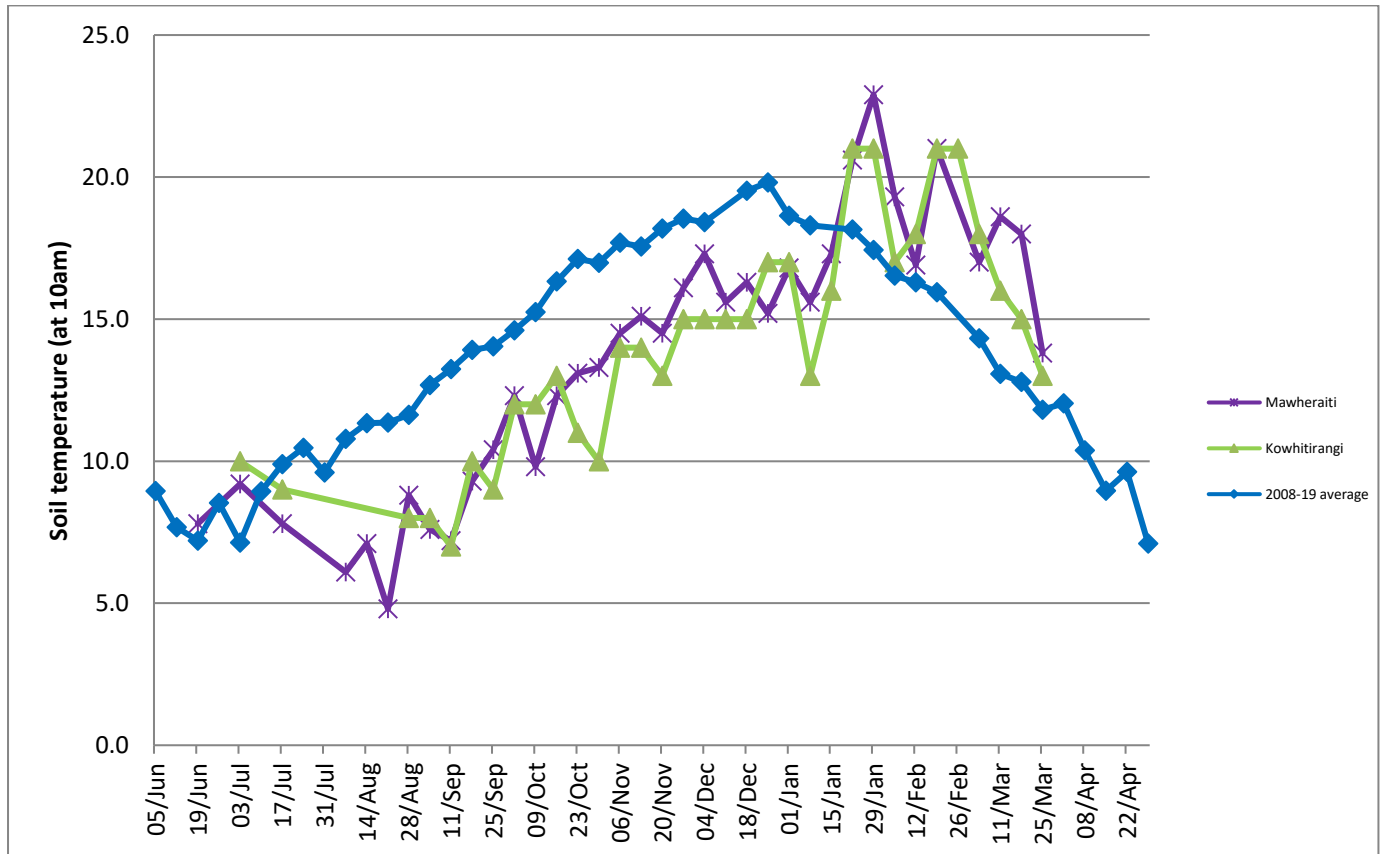
NB: pasture quality data are for 1 sample collected from each farm

\* Result outside normal range. Will be reviewed with next week's data

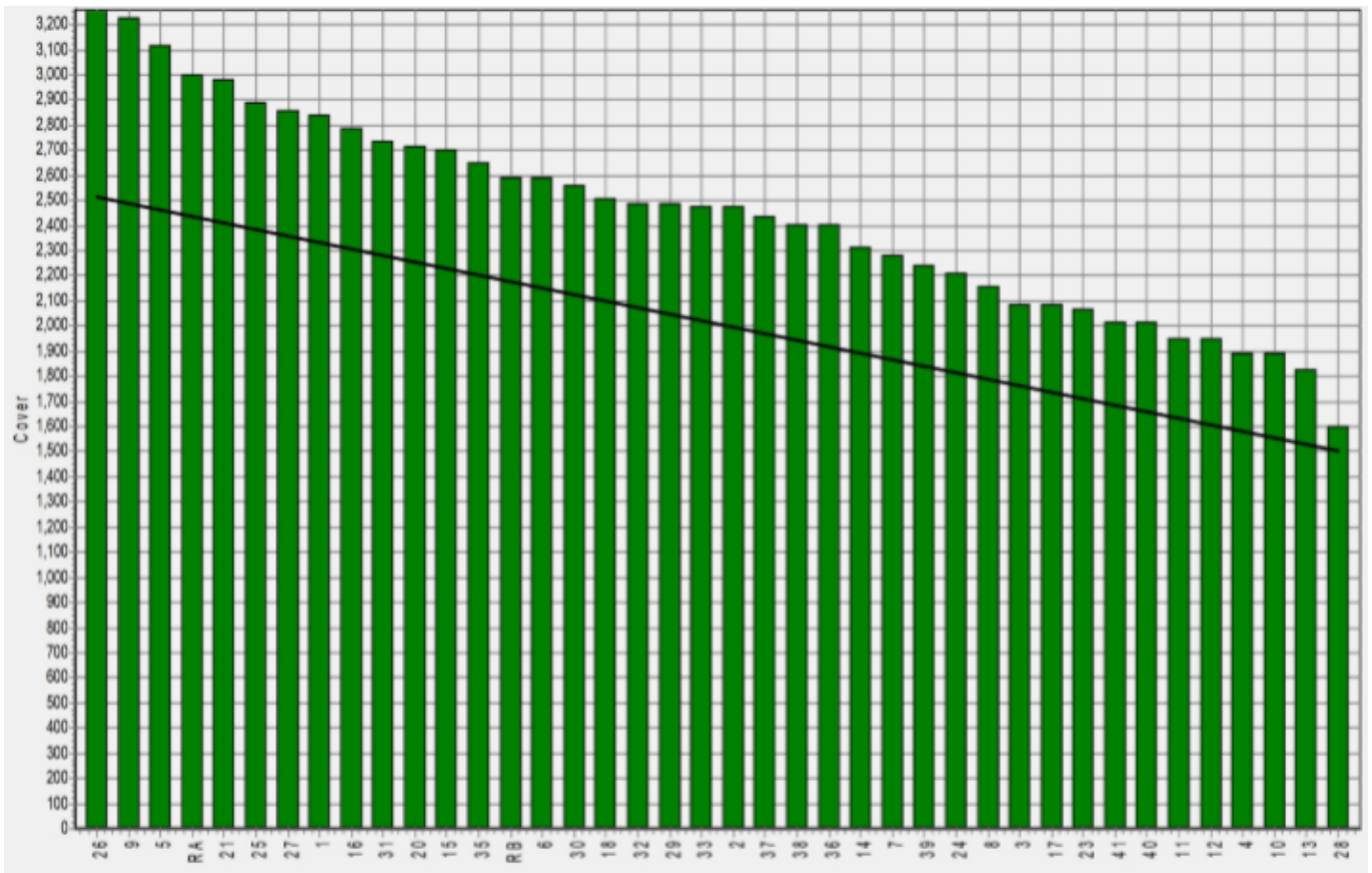
## Weekly Pasture Growth Rates



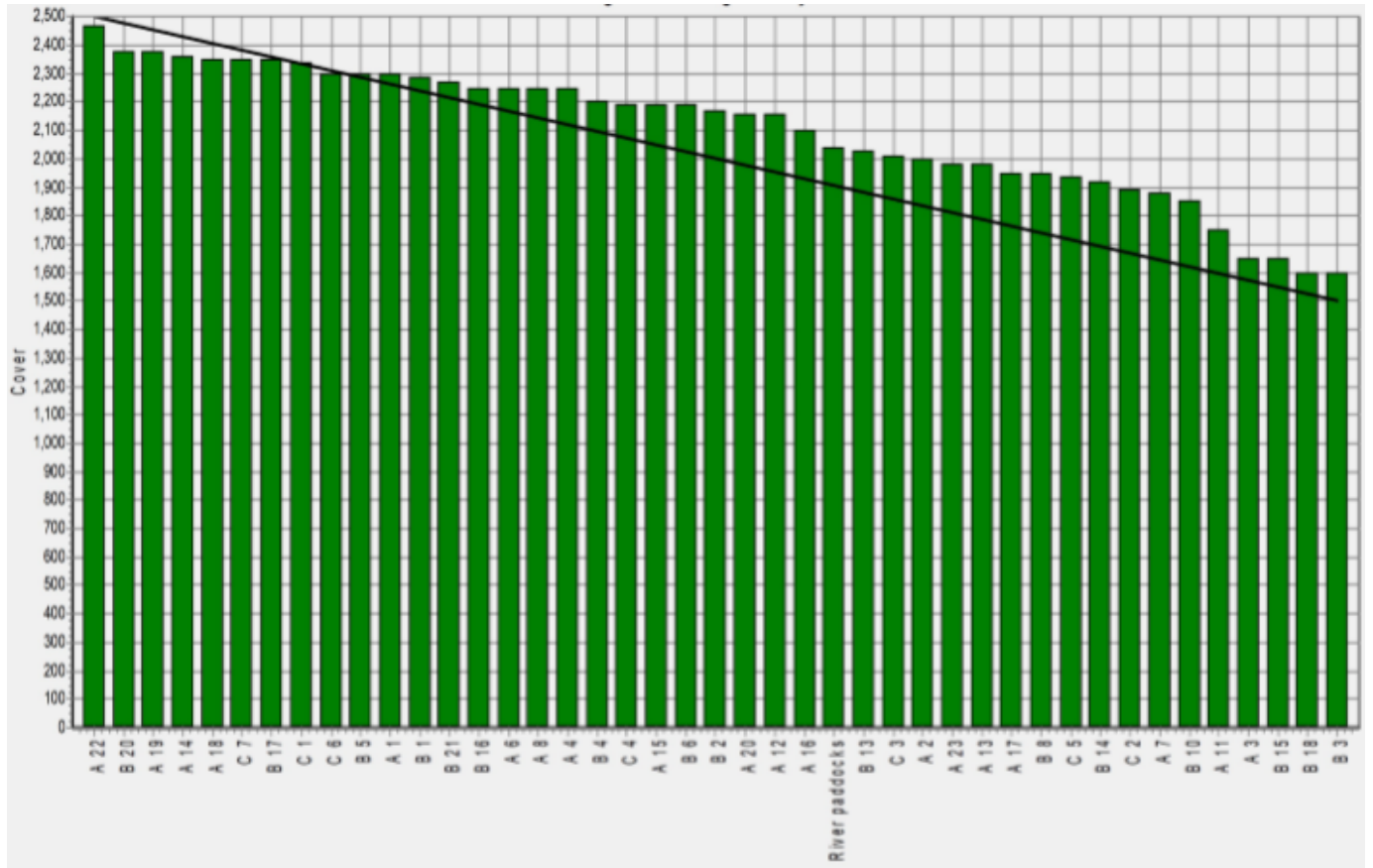
## Weekly Soil Temperature



# Mawheraiti



Kowhitirangi



Mawheraiti

Description	Date	RPM	% DM	% Prot	% Lipid	% ADF	% NDF	Sol Sugar	OMD %	MJME/kg
Paddock 2	15/07/19	15.4	12.7	30.2	3.8	19.2	38.4	8.5	88.8	13.0
Paddock 17	2/09/19	16.8	15.5	24.0	4.7	11.4	48.3	12.0	84.4	12.3
Paddock 2	4/11/19	13.0	15.4	16.3	3.4	22.1	46.6	16.5	83.2	12.2
Paddock 10	2/12/19	17.7	15.3	20.6	3.2	23.0	44.0	10.0	79.7	11.6
Paddock 1	13/1/20	14.4	14.7	24.5	3.5	23.3	46.9	11.7	81.3	11.9
Paddock 24	3/2/20	10.8	13.2	25.0	3.4	25.3	47.1	5.7	79.8	11.6
Paddock 21	2/3/20	15.8	11.4	28.5	3.4	25.7	48.4	5.9	78.6	11.5

Kowhitirangi

Description	Date	RPM	% DM	% Prot	% Lipid	% ADF	% NDF	Sol Sugar	OMD %	MJME /kg
Paddock 5b	17/07/19	13.8	14.3	24.3	3.9	18.4	43.1	14.2	85.2	12.4
Paddock 3c	4/09/19	10.8	17.3	24.0	3.5	15.7	36.1	21.1	>85	12.6
Paddock 9b	9/10/19	8.9	15.0	25.6	3.3	22.3	45.2	10.5	83.3	12.2
Paddock 15a	6/11/19	9.0	13.5	23.7	3.8	20.4	43.8	12.2	>85	12.5
Paddock 13a	4/12/19	13.3	11.5	29.4	3.2	24.5	43.3	6.4	85.0	12.4
Paddock 13b	15/1/20	10.0	19.5	18.8	3.4	24.1	44.7	13.8	76.8	11.2
Paddock 4a	5/2/20	13.8	9.9	24.8	3.3	30.5*	53.1	2.1	76.0	11.1
Paddock 14a	4/3/20	16.0	11.6	29.5	3.3	22.9	45.0	6.4	81.7	11.9

\* Test analytes which have occurred as outliers on the NIRS calibration are indicated by \* and should be treated as an approximation only.

