

Westland Monitor Farm Project

Weekly Update as at week ending Wednesday 11th December 2019

CO Comment

Last week saw a massive weather bomb hit the South Island. On the West Coast we saw rivers rise with some heavy rainfall which equated to some severe impacts to South Westland particularly. The water has gone, and we have been left with some less than ideal conditions for this time of the year.

It is timely for all farmers to do a census on feed budgets going forward to make sure things are tracking as planned and if not, then what changes could be made.

For those affected by prolonged wet weather or have suffered from flooding, the plan may have to be a bit more drastic but there may be some benefit to us all having a look at the following...

- Assess the current feed resources available on the milking platform
- Assess winter crop paddocks and estimate yields
- Do a supplementary feed inventory for both the milking platform and wintering block
- Buy in feed to reduce the gap between demand and supply
- If using a grazier for winter feeding contact them for an update on the feed situation on their farm as this may dictate decisions that have to be made on the milking platform now
- Be realistic, how many stock can you feed successfully for the remainder of the season and during the dry period
- Manage grazing of wet soils to minimise the risk of pasture and soil damage which will impact on subsequent growth
- Don't be tempted to retain more animals than you can comfortably feed, options for these animals could be to offload cull cows, OAD milking, get any drystock off the platform.

Specifically for those affected by flooding you can find more information at

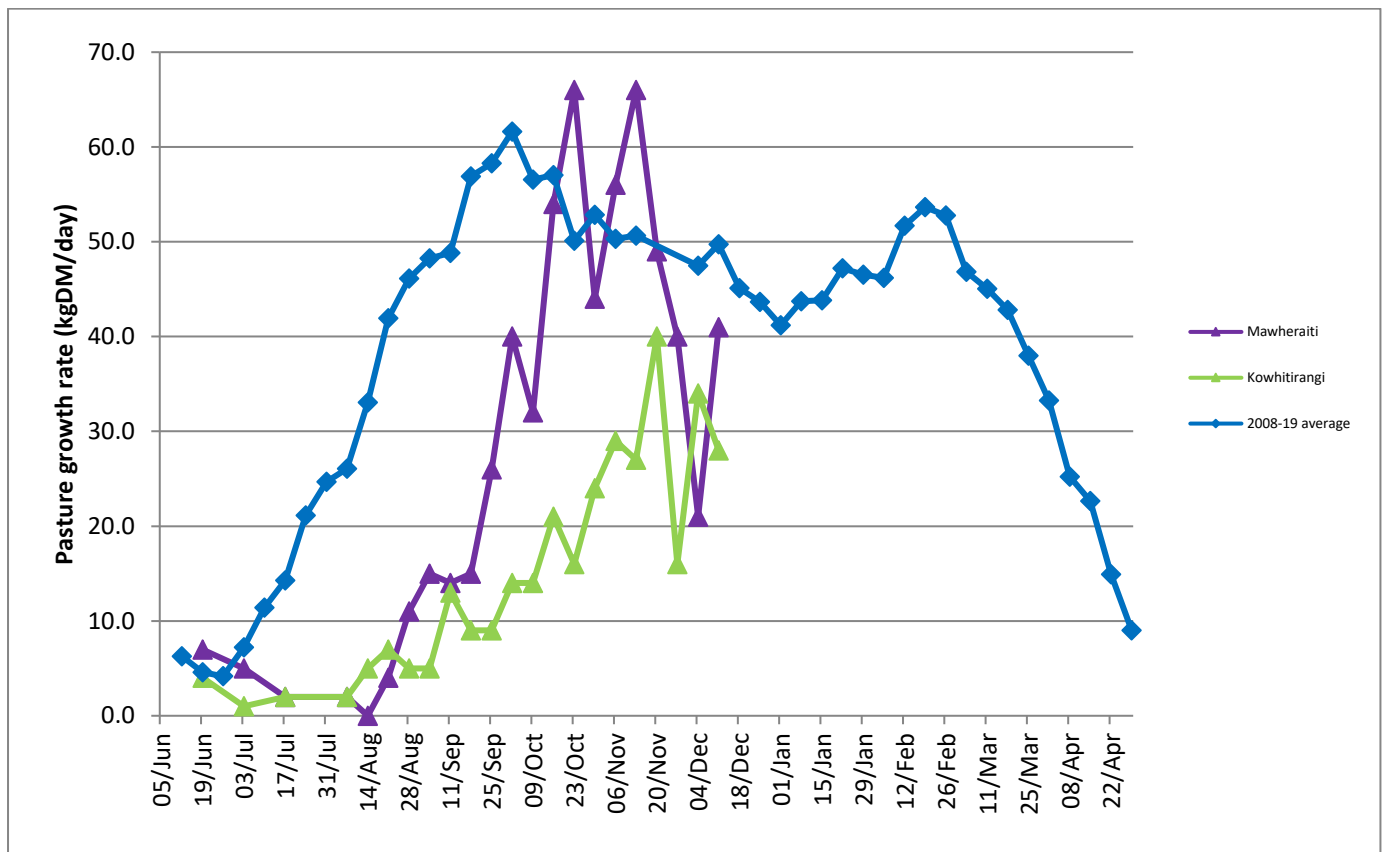
<https://www.dairynz.co.nz/business/adverse-events/flood/> or feel free to contact someone in the [DairyNZ West Coast team](#).

Farm Summary

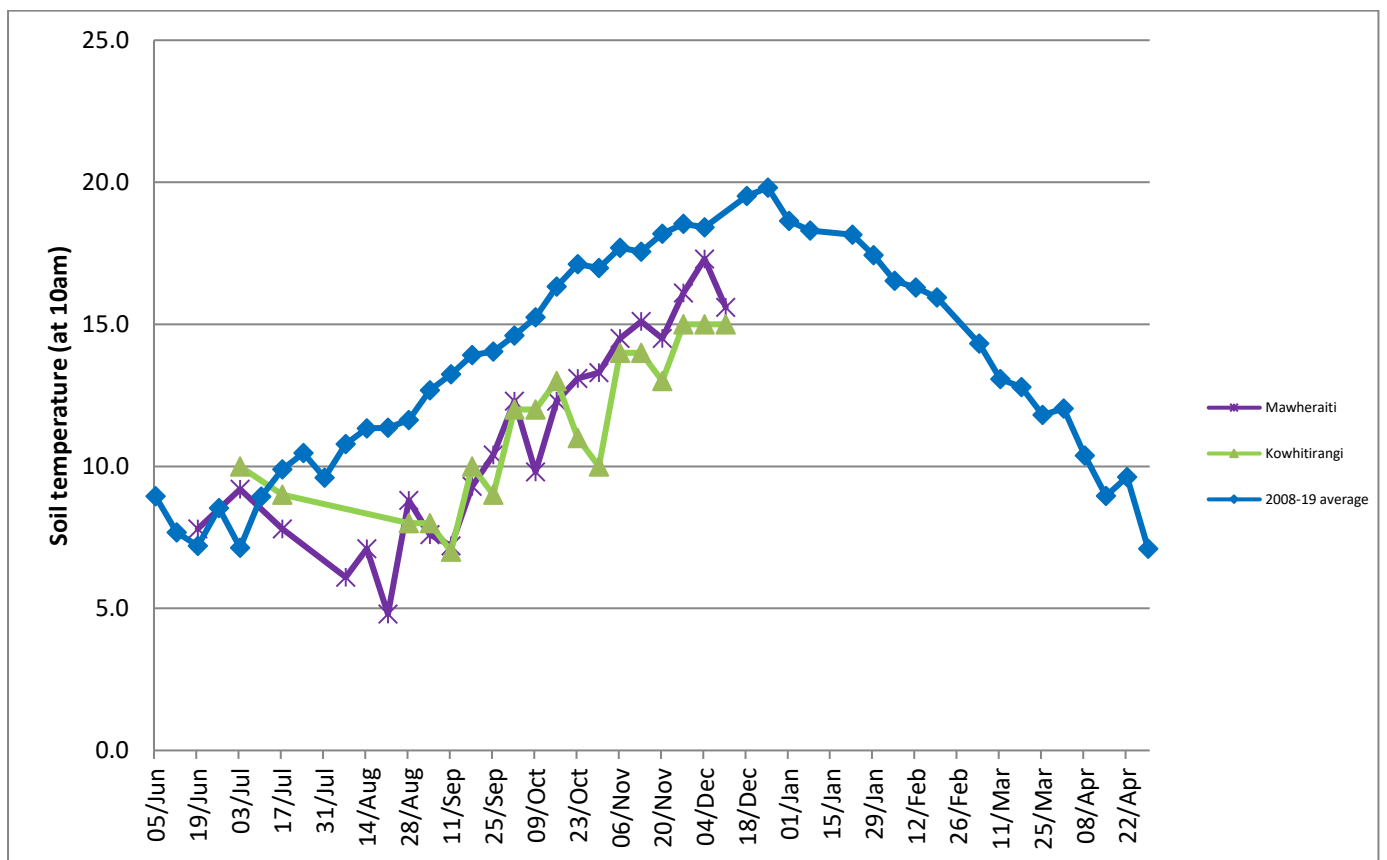
	Mawheraiti	Kowhitirangi
Average cover (kg DM/ha)	2157	2009
APC (3 July)	2204	1983
Rotation length (days)	24	29
Stocking rate	2.5	2.3
Percentage in milk	100	100
Milksolids kg/cow	1.76	1.85
Milksolids kg/ha	4.4	4.0
MS/cow (season to date)	183	210
MS/ha (season to date)	460	418
N (kg/ha) year to date	94	115
Current N application rate kg N/ha	24	-
	4 Nov	6 Nov
DM%	15.4	13.5
Pasture ME	12.2	12.5
Pasture NDF	46.6	43.8
Pasture CP	16.3	23.7
Target Intake (kg DM/cow/d)	19	18
Supplement (kg/cow/day)	0.9	3.7
Soil temperature (°C)	15.6	15
Growth Rate (kg DM/day)	41	28
Rainfall	50	283
Conditions for farmwalk	Fine day	Fine day

NB: pasture quality data are for 1 sample collected from each farm

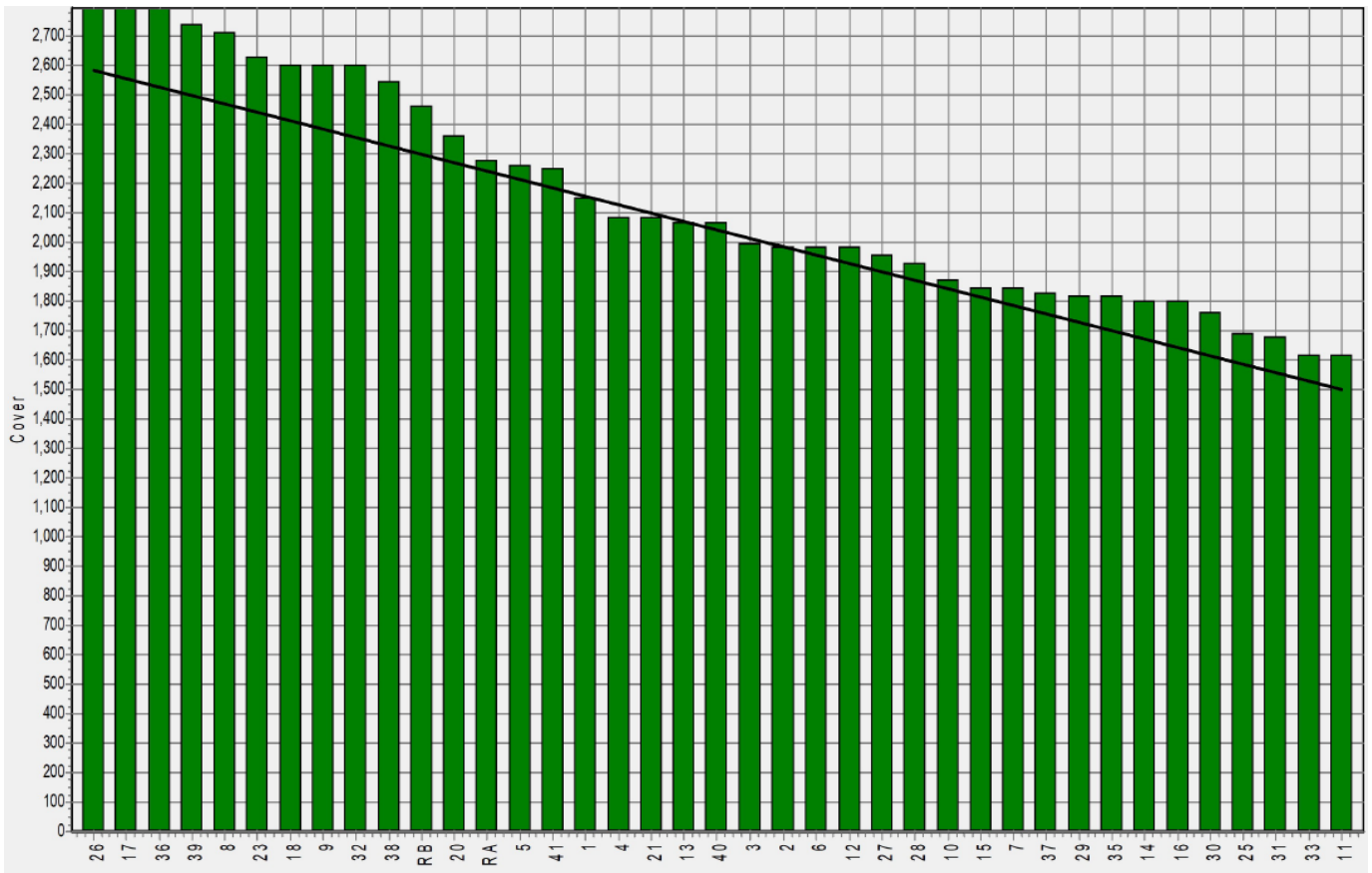
Weekly Pasture Growth Rates



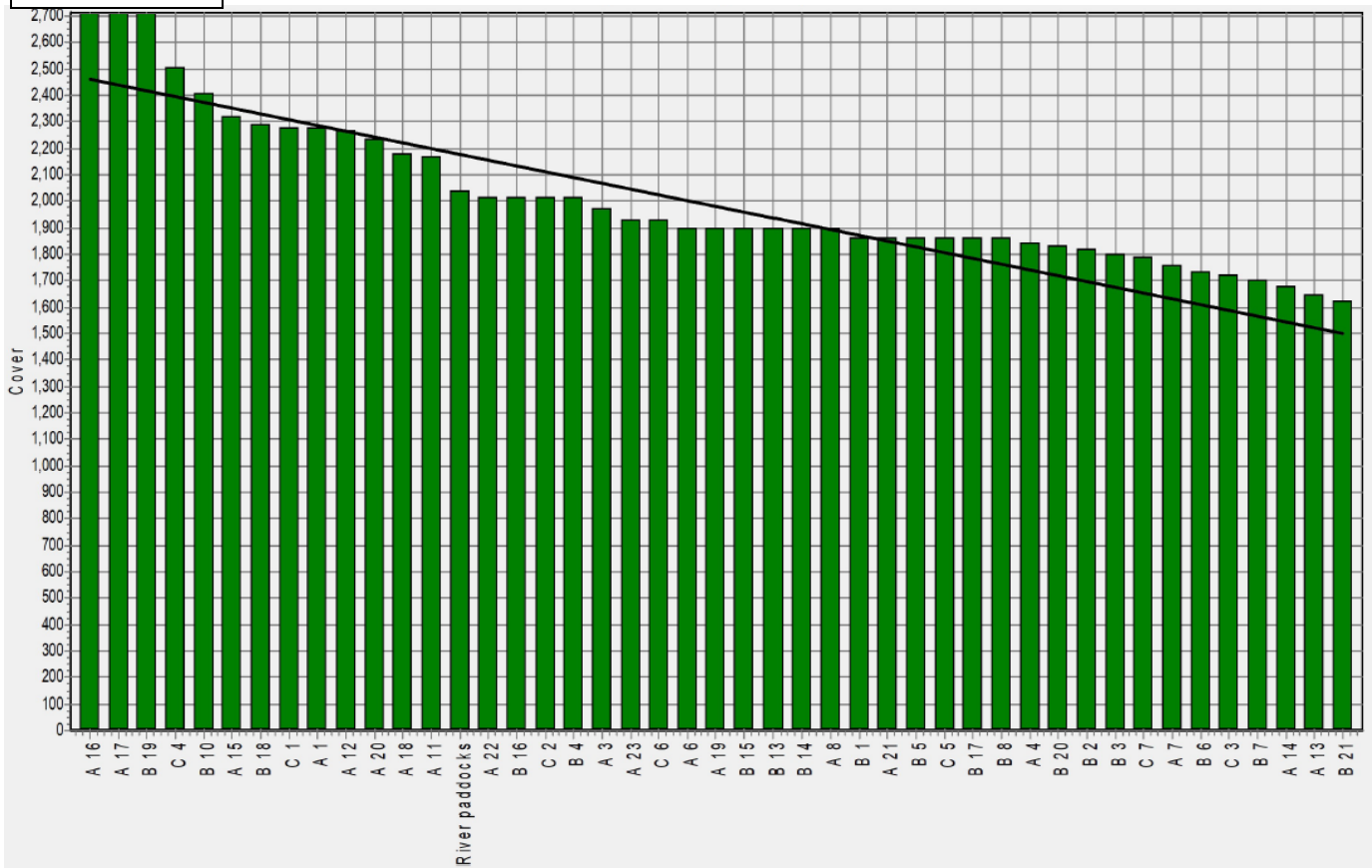
Weekly Soil Temperature



Mawheraiti



Kowhitirangi



Kowhitirangi

Description	Date	RPM	% DM	% Prot	% Lipid	% ADF	% NDF	Sol Sugar	OMD %	MJME /kg
Paddock 5b	17/07/19	13.8	14.3	24.3	3.9	18.4	43.1	14.2	85.2	12.4
Paddock 3c	4/09/19	10.8	17.3	24.0	3.5	15.7	36.1	21.1	>85	12.6
Paddock 9b	9/10/19	8.9	15.0	25.6	3.3	22.3	45.2	10.5	83.3	12.2
Paddock 15a	6/11/19	9.0	13.5	23.7	3.8	20.4	43.8	12.2	>85	12.5