

Westland Monitor Farm Project

Weekly Update as at week ending Wednesday 11th March 2020

CO Comment

This season has been a bit of a struggle in terms of pasture utilisation but by now you should be able to start making sure you are transferring pasture through into the autumn/winter period by extending the round length.

Reducing stock demand on pasture can be achieved by either using supplement or culling cows now if you haven't already.

Make sure you maintain adequate supplement reserves for winter and spring. Have you looked into what the demand will be through winter? DairyNZ has some simple feed budgets to help you determine the demand at <https://www.dairynz.co.nz/feed/pasture-management/assessing-farm-performance/feed-budgets/>

Identify any lighter cows, particularly 2 and 3 year olds and prioritize feed for this group in order to get them to the desired condition score target at calving (5 for cows and 5.5 for heifers and second calvers). Action taken now whilst pasture growth rates are better will generate better results than waiting until pasture growth rates start declining more rapidly.

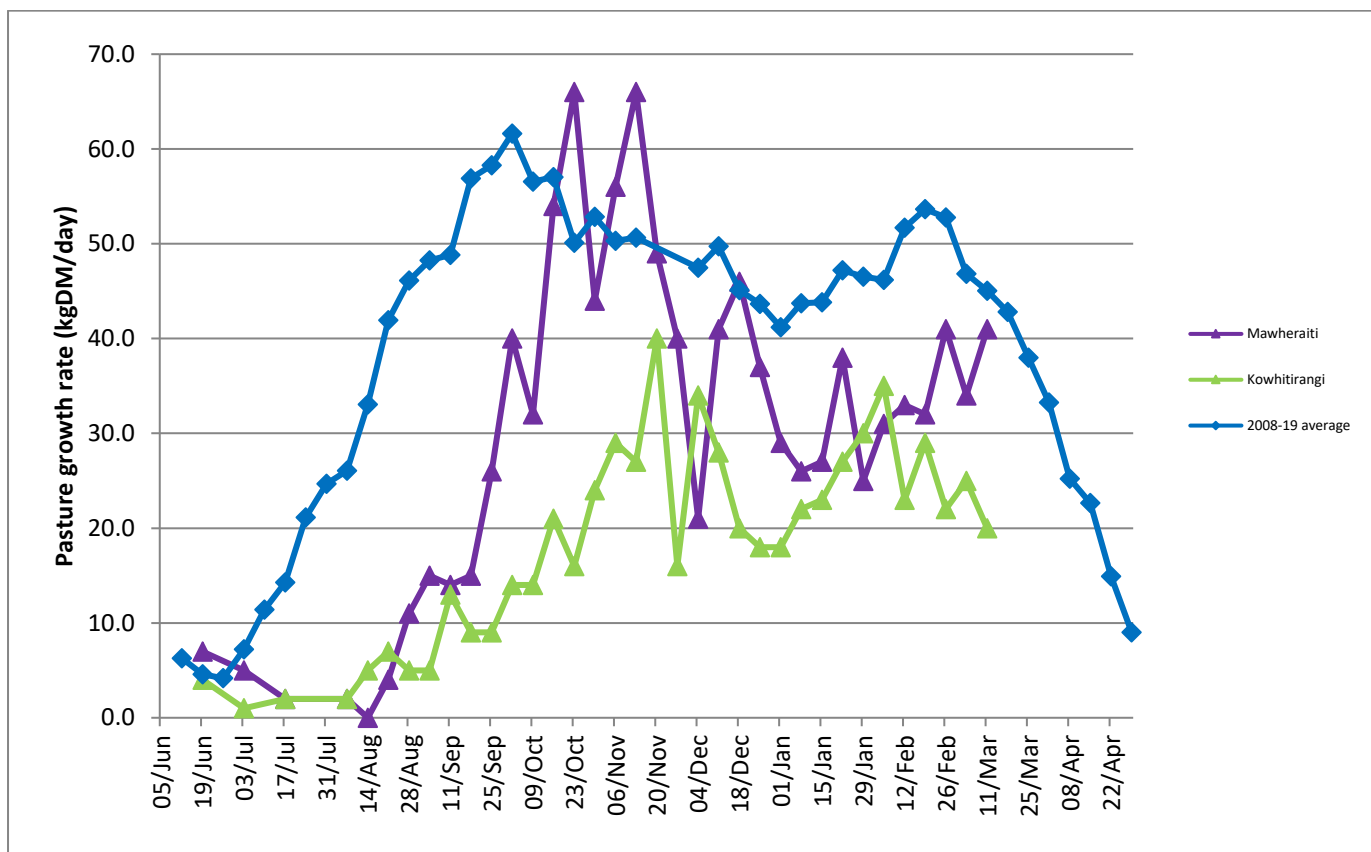
By making a plan now you could save yourself from using some supplement in spring, although this will be weather dependant at the time. We can't predict what spring will bring but we can be as prepared as we can be with knowledge of where our cows are at now, our spring requirements and a flexible plan in place to meet those.

Farm Summary

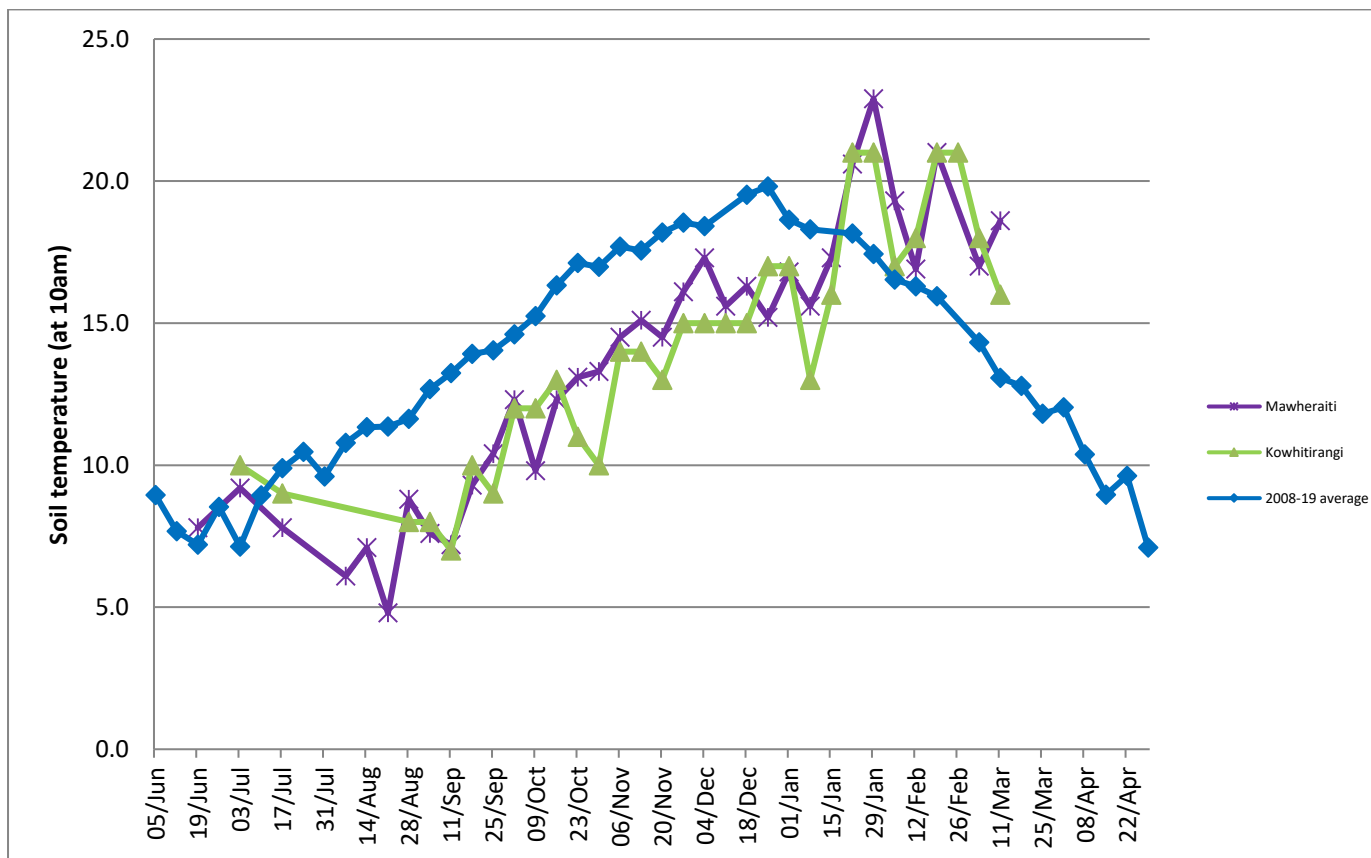
	Mawheraiti	Kowhitirangi
Average cover (kg DM/ha)	2160	1982
APC (4 March)	2141	2000
Rotation length (days)	28	27
Stocking rate	2.3	2.3
Percentage in milk	100	100
Milksolids kg/cow	1.52	1.17
Milksolids kg/ha	3.5	2.4
MS/cow (season to date)	321	361
MS/ha (season to date)	804	719
N (kg/ha) year to date	193	191
Current N application rate kg N/ha	25	16
	2 Mar	4 Mar
DM%	11.4	11.6
Pasture ME	11.5	11.9
Pasture NDF	48.4	45.0
Pasture CP	28.5	29.5
Target Intake (kg DM/cow/d)	17	18
Supplement (kg/cow/day)	0	1
Soil temperature (°C)	18.6	16
Growth Rate (kg DM/day)	41	20
Rainfall	21	50
Conditions for farmwalk	Overcast and warm, but been raining	Fine and warm

NB: pasture quality data are for 1 sample collected from each farm

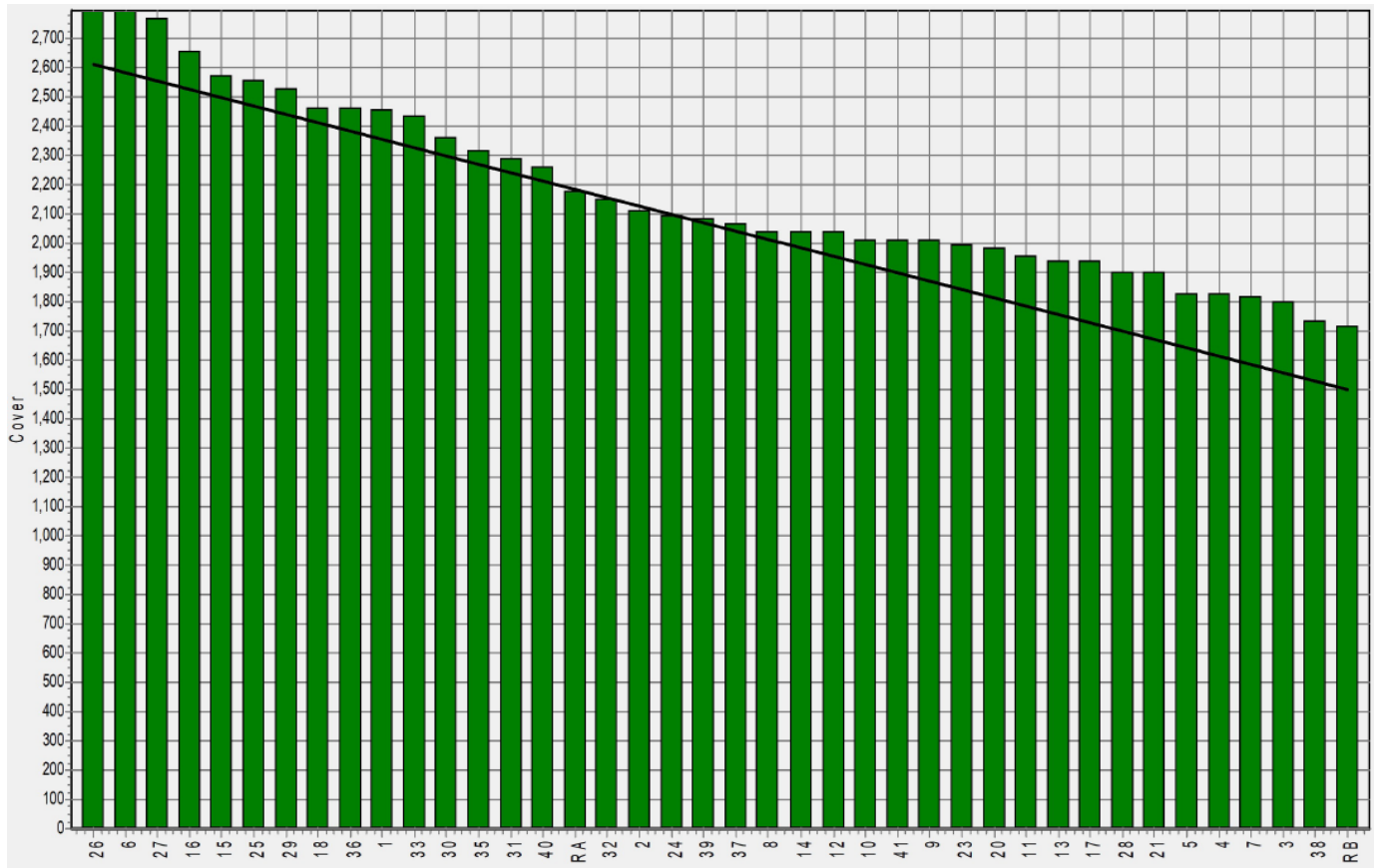
Weekly Pasture Growth Rates



Weekly Soil Temperature



Mawheraiti



Kowhitirangi

