

Westland Monitor Farm Project

Weekly Update as at week ending Wednesday 11th September 2019

CO Comment

It has been a busy few weeks at West Coast DairyNZ HQ. We have had a staff conference in Hamilton where we have learned about upcoming challenges that the dairy sector will face and discussed how DairyNZ is going to help farmers take opportunities to navigate these.

You will see a new person out and about for a few months. Andrea Pilcher has come on board on the West Coast for 6 months to help with Dairybase data collection and engaging with you to discuss how DairyNZ can help you in any areas of your farming business.

Andrea has extensive dairy farming experience so is well equipped to have real discussions with you. So please make her feel welcome if she calls on you and feed back through her what it is that DairyNZ can do to enable you to achieve some of your goals.

This season we have some exciting things in the pipeline. We will be bringing a Mark and Measure conference to the West Coast and we are in the initial stages of planning this now. This is a fantastic opportunity to assess your current business performance using Dairybase, set some goals and create an action plan of how to realise these. Spaces will be limited, but it will be a fantastic opportunity to create a future focus for your business over the next 10 years and beyond. This will be beneficial to all, regardless of where you are in your business. Farm owner, Share Milker or Contract Milker; there will be something for everyone.

There will be more information available about the specific West Coast Mark and Measure soon, but to get a bit more of a run down on the content of Mark and Measure in general visit

<https://www.dairynz.co.nz/business/mark-and-measure/>

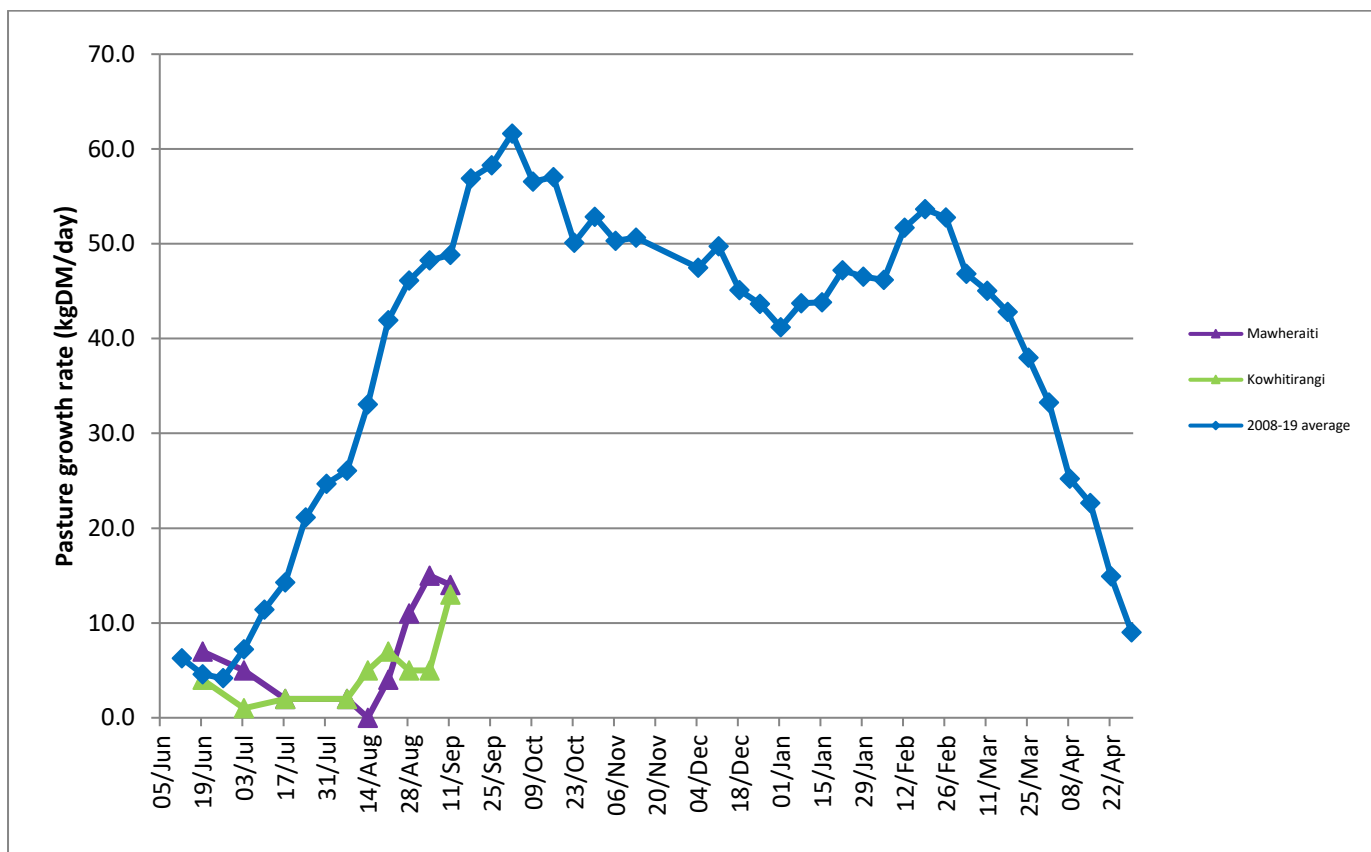
Farm Summary

	Mawheraiti	Kowhitirangi
Average cover (kg DM/ha)	2314	1856
APC (3 July)	2371	1839
Rotation length (days)		
Stocking rate		
Percentage in milk	62	87
Milksolids kg/cow	.*	1.56
Milksolids kg/ha	.*	2.9
MS/cow (season to date)	14	27
MS/ha (season to date)	33	54
N (kg/ha) year to date	37	44
Current N application rate kg N/ha	-	22
	2 Sept	4 Sept
DM%	15.5	17.3
Pasture ME	12.3	12.6
Pasture NDF	48.3	36.1
Pasture CP	24.0	24.0
Target Intake (kg DM/cow/d)		
Supplement (kg/cow/day)	4	3
Soil temperature (°C)	7.2	7
Growth Rate (kg DM/day)	14	13
Rainfall	12	6
Conditions for farmwalk	Fine and mild	-

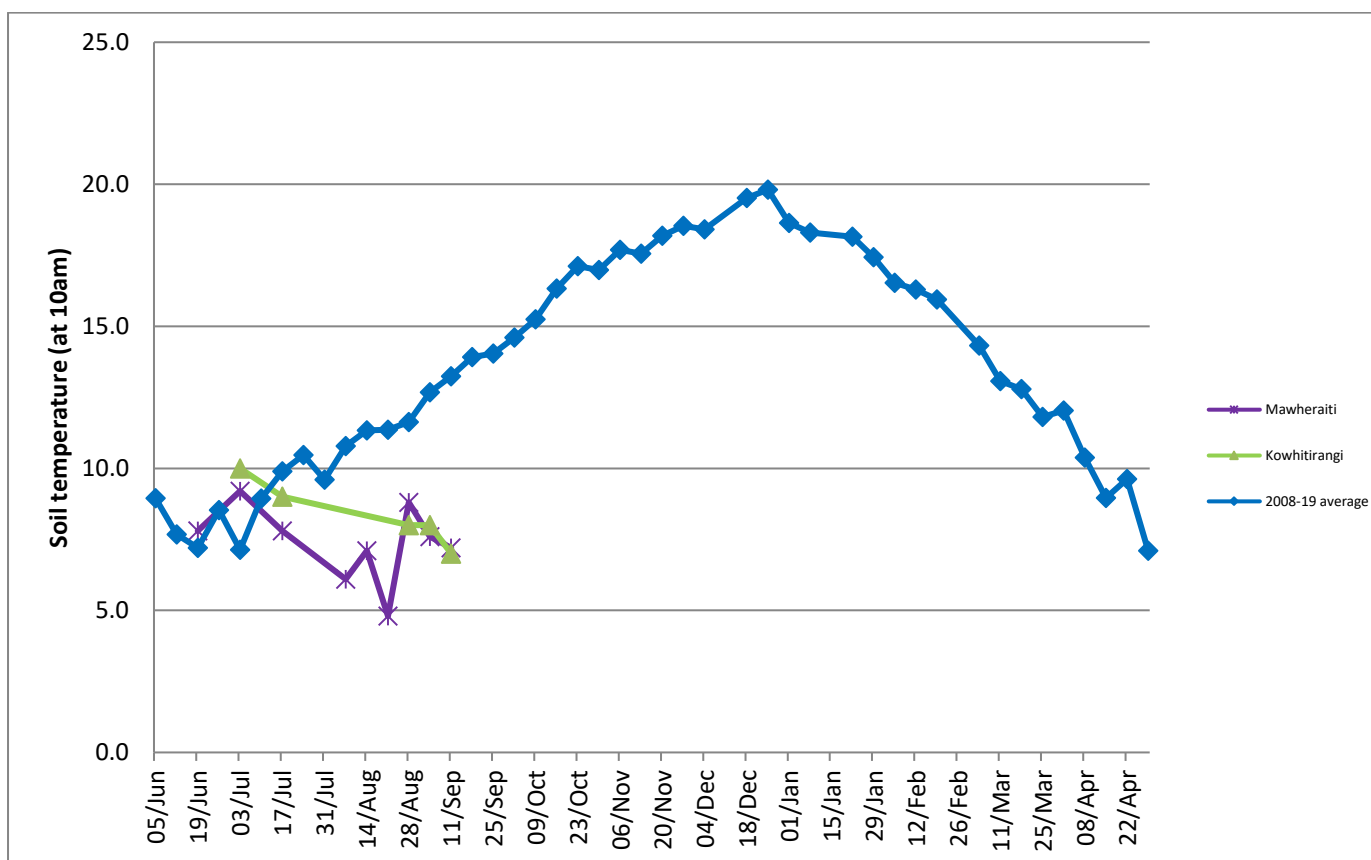
* Data not available at time of report collation. Will be updated when available.

NB: pasture quality data are for 1 sample collected from each farm

Weekly Pasture Growth Rates



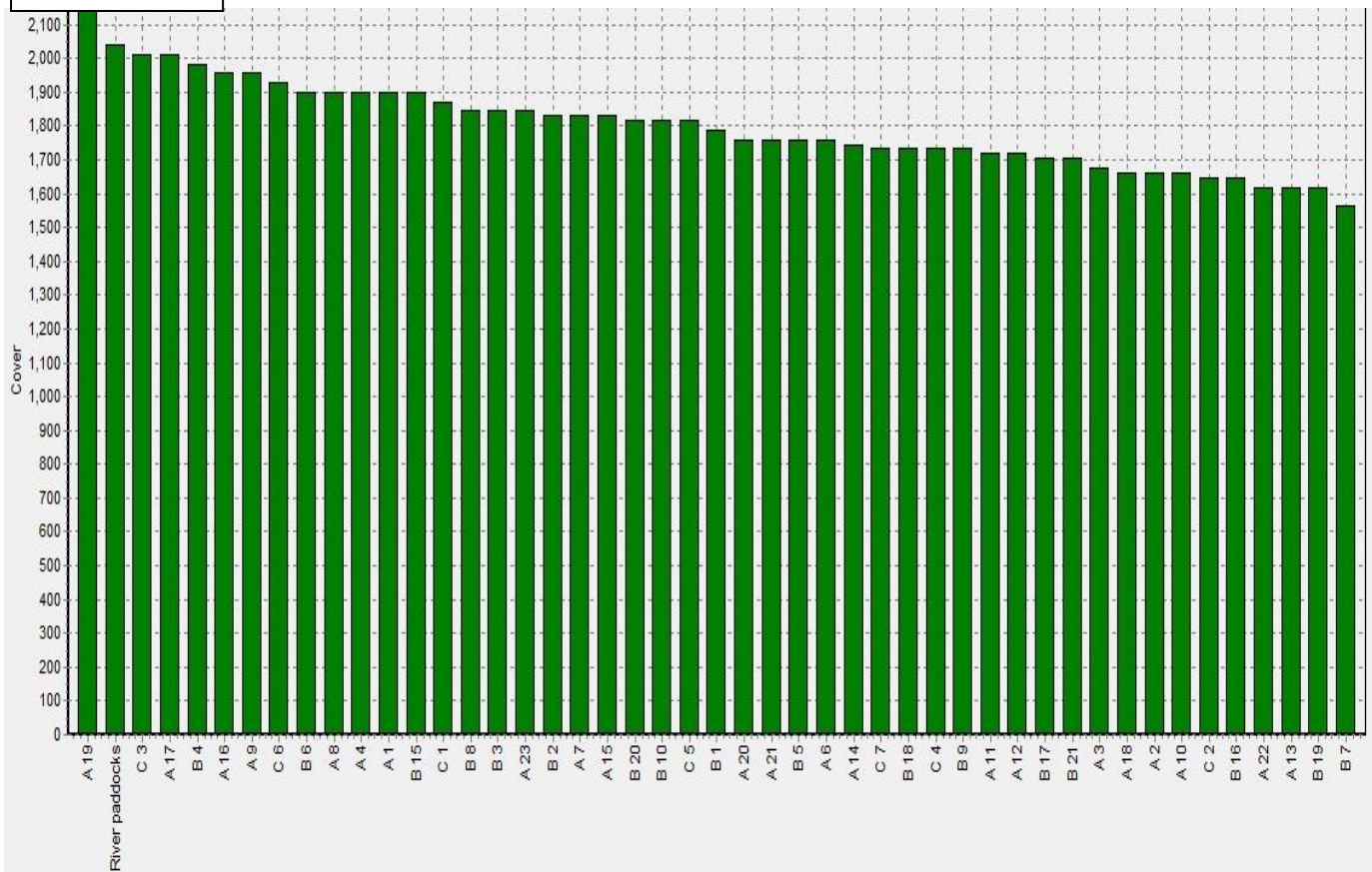
Weekly Soil Temperature



Mawheraiti



Kowhitirangi



Mawheraiti

Description	Date	RPM	% DM	% Prot	% Lipid	% ADF	% NDF	Sol Sugar	OMD %	MJME/k g
Paddock 2	15/07/19	15.4	12.7	30.2	3.8	19.2	38.4	8.5	88.8	13.0
Paddock 17	2/09/19	16.8	15.5	24.0	4.7	11.4	48.3	12.0	84.4	12.3

