

Westland Monitor Farm Project

Weekly Update as at week ending Wednesday 12th February 2020

CO Comment

This week we have our 2 monitor farm field days. On the 19th of February we will be in Kowhitirangi at Anna and Jeremy Hart's farm. On the 20th of February we will be at Mawheraiti on Stu and Debbie Bland's farm.

This information requires effort from the monitor farmers, research techs, data collectors and the West Coast Focus Farm Trust to collate and put together so if you are a reader of the Farmwatch information these people kindly provide, then come along and support them at the field days.

This year we have Robb Macbeth who is a Farm Business Specialist at DairyNZ coming along to present some of the correlating financial and pasture eaten information. Robb is an engaging speaker who keeps things simple, so even if financials aren't your forte, you are bound to learn something.

Katherine McCusker is the catchment engagement leader for Canterbury, the Top of the South Island and the West Coast.

Catchment Engagement Leaders work with farmers, councils and other stakeholders towards achieving better environmental outcomes. They often act as the 'translator' between policy/science/council and farmers, alongside the regional extension teams.

Katherine will be on hand to talk about practical tips that farmers can take home to start working towards environmentally sustainable outcomes on their farms.

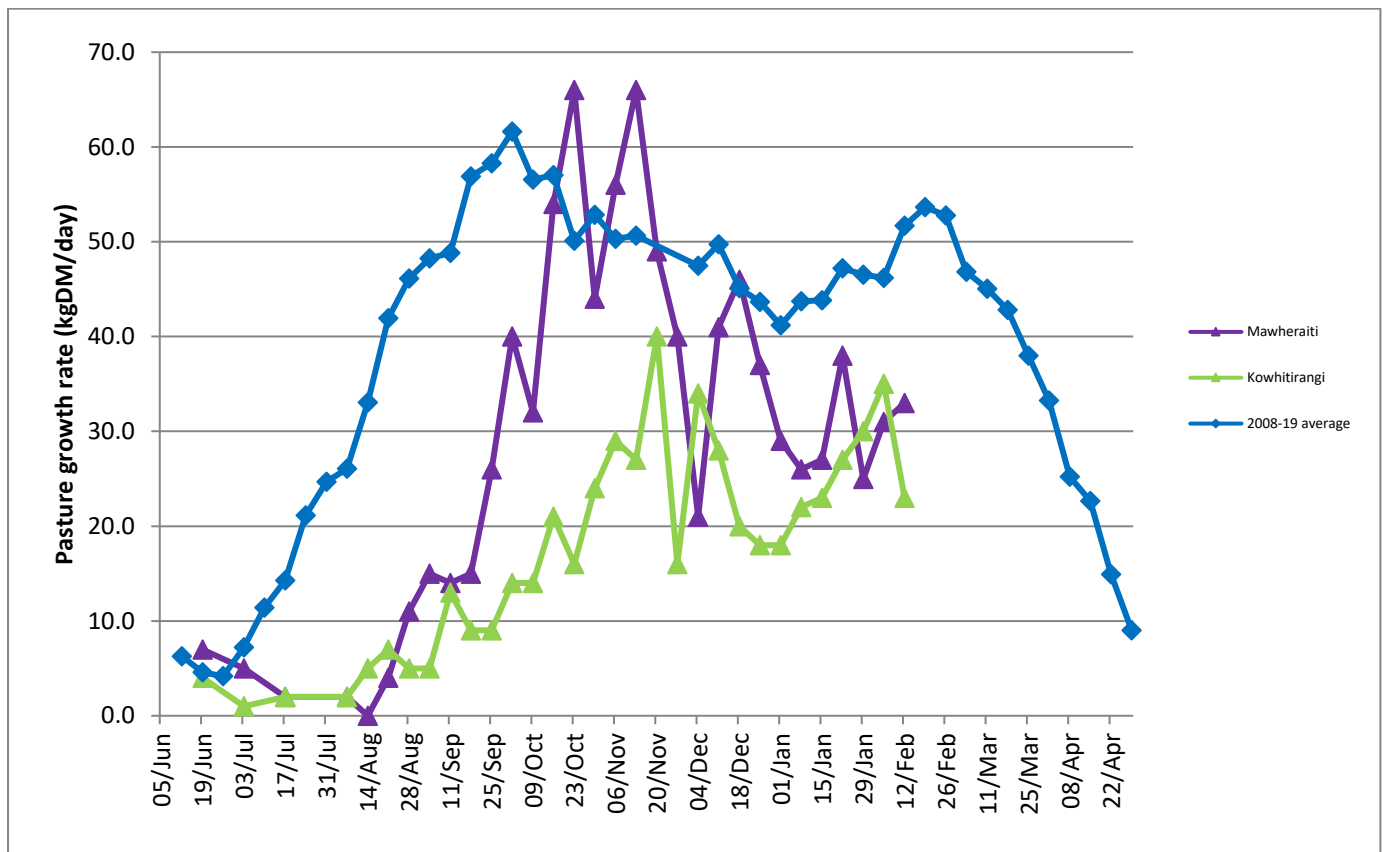
Two very informative days coming up this week that you should get along to. For details on these and others visit [the DairyNZ West Coast events page](#).

Farm Summary

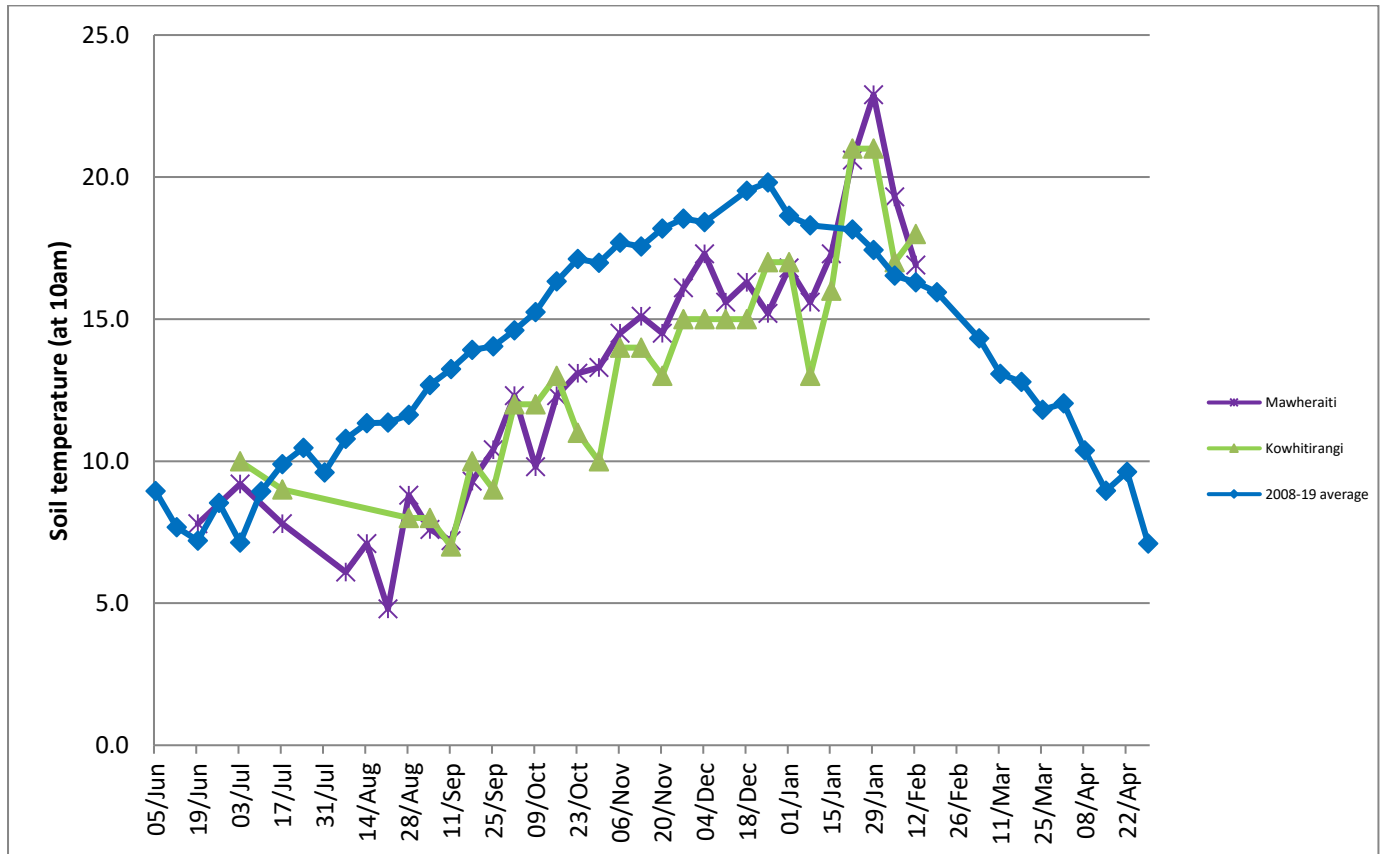
| | Mawheraiti | Kowhitirangi |
|------------------------------------|--------------|-------------------|
| Average cover (kg DM/ha) | 2101 | 2003 |
| APC (5 February) | 2061 | 2077 |
| Rotation length (days) | 27 | 30 |
| Stocking rate | 2.4 | 2.3 |
| Percentage in milk | 100 | 100 |
| Milksolids kg/cow | 1.48 | 1.47 |
| Milksolids kg/ha | 3.5 | 3.1 |
| MS/cow (season to date) | 281 | 319 |
| MS/ha (season to date) | 705 | 636 |
| | | |
| N (kg/ha) year to date | 156 | 175 |
| Current N application rate kg N/ha | 33 | - |
| | | |
| | 3 Feb | 5 Feb |
| DM% | 13.2 | 9.9 |
| Pasture ME | 11.6 | 11.1 |
| Pasture NDF | 47.1 | 53.1 |
| Pasture CP | 25.0 | 24.8 |
| | | |
| Target Intake (kg DM/cow/d) | 17 | 18 |
| Supplement (kg/cow/day) | 0 | 2 |
| | | |
| Soil temperature (°C) | 16.9 | 18 |
| Growth Rate (kg DM/day) | 33 | 23 |
| Rainfall | 44 | 5 |
| Conditions for farmwalk | Hot and fine | Overcast and warm |

NB: pasture quality data are for 1 sample collected from each farm

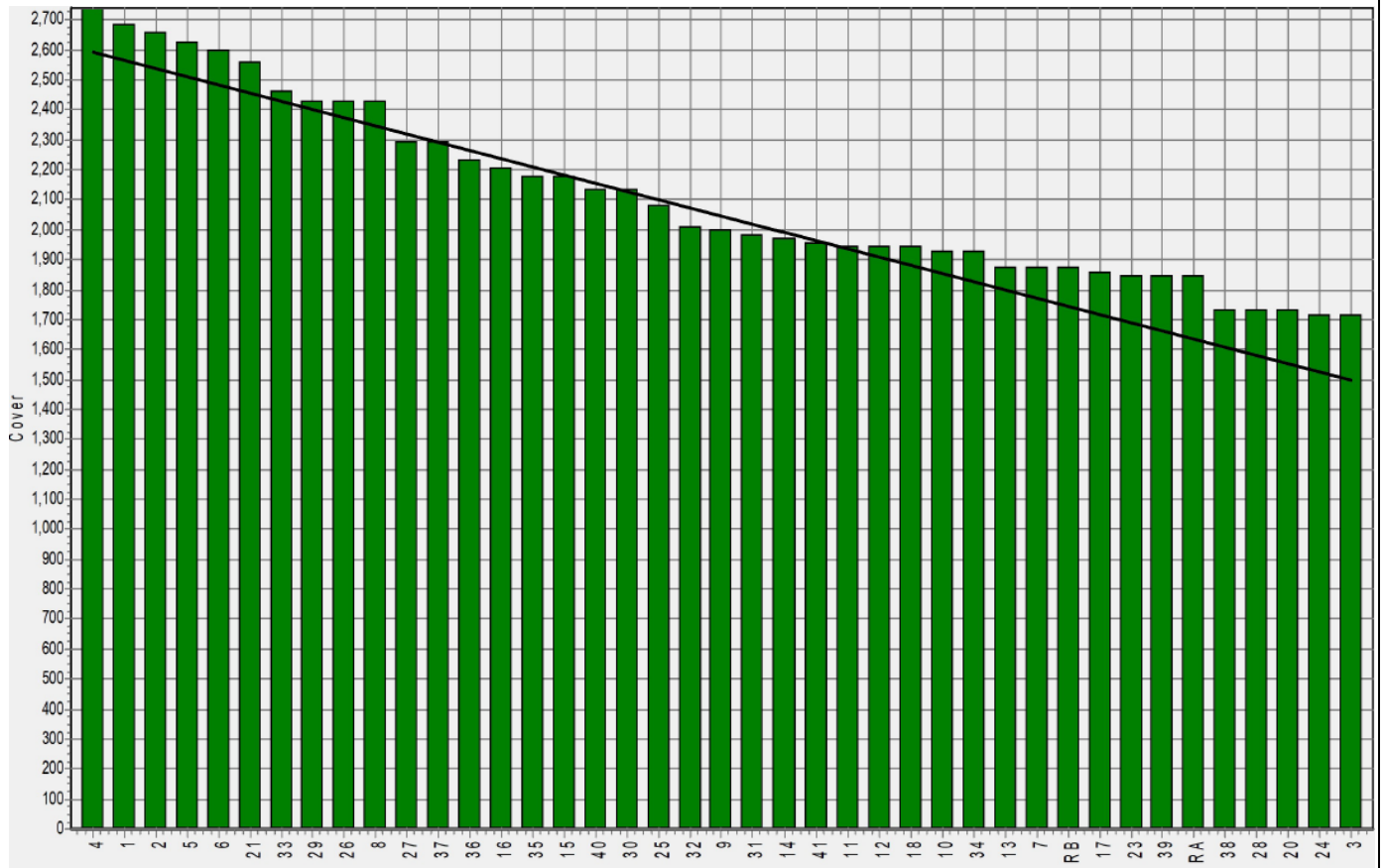
Weekly Pasture Growth Rates



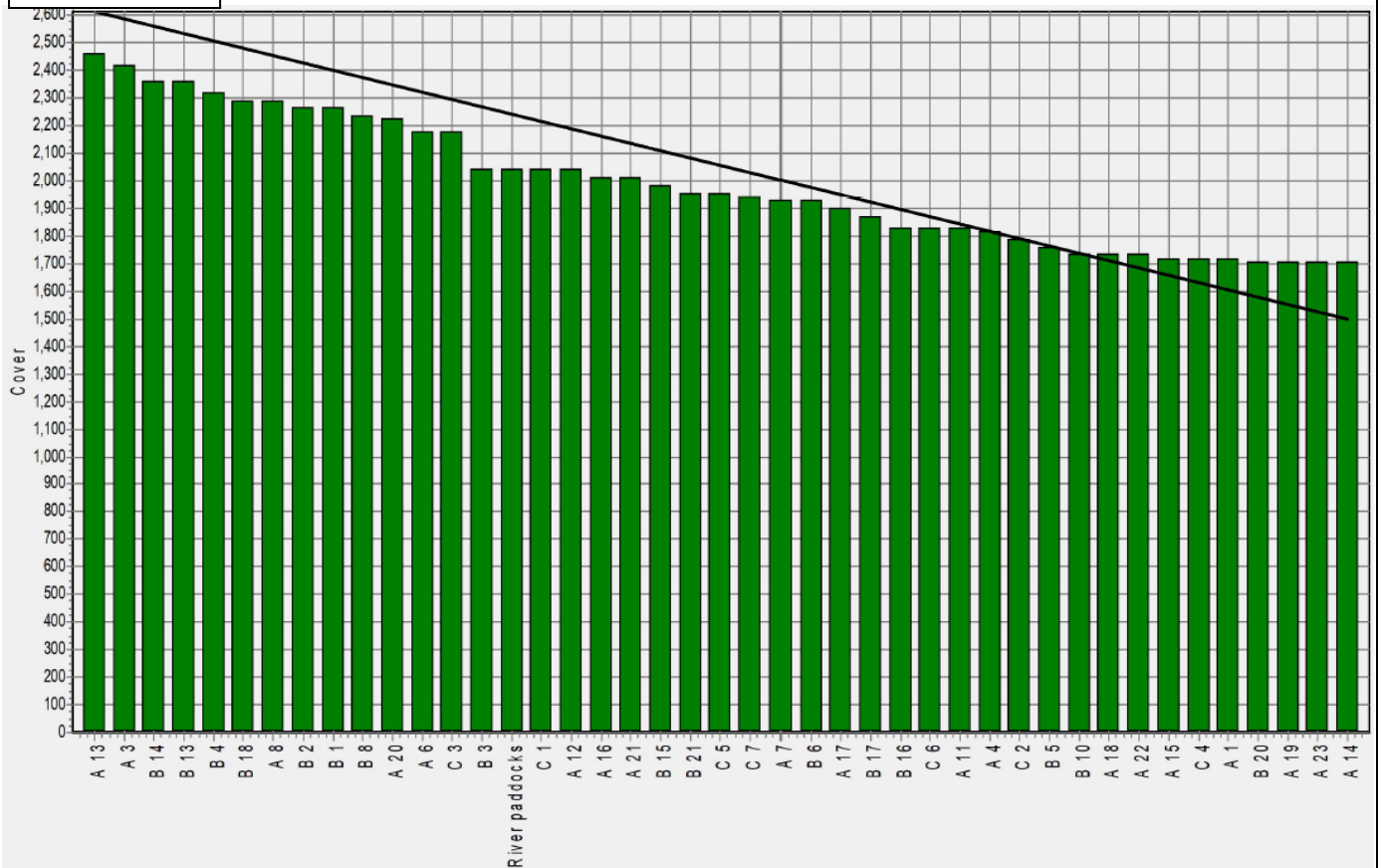
Weekly Soil Temperature



Mawheraiti



Kowhitirangi



Mawheraiti

| Description | Date | RPM | % DM | % Prot | % Lipid | % ADF | % NDF | Sol Sugar | OMD % | MJME/kg |
|-------------|----------|------|------|--------|---------|-------|-------|-----------|-------|---------|
| Paddock 2 | 15/07/19 | 15.4 | 12.7 | 30.2 | 3.8 | 19.2 | 38.4 | 8.5 | 88.8 | 13.0 |
| Paddock 17 | 2/09/19 | 16.8 | 15.5 | 24.0 | 4.7 | 11.4 | 48.3 | 12.0 | 84.4 | 12.3 |
| Paddock 2 | 4/11/19 | 13.0 | 15.4 | 16.3 | 3.4 | 22.1 | 46.6 | 16.5 | 83.2 | 12.2 |
| Paddock 10 | 2/12/19 | 17.7 | 15.3 | 20.6 | 3.2 | 23.0 | 44.0 | 10.0 | 79.7 | 11.6 |
| Paddock 1 | 13/1/20 | 14.4 | 14.7 | 24.5 | 3.5 | 23.3 | 46.9 | 11.7 | 81.3 | 11.9 |
| Paddock 24 | 3/2/20 | 10.8 | 13.2 | 25.0 | 3.4 | 25.3 | 47.1 | 5.7 | 79.8 | 11.6 |
| | | | | | | | | | | |
| | | | | | | | | | | |
| | | | | | | | | | | |
| | | | | | | | | | | |
| | | | | | | | | | | |
| | | | | | | | | | | |
| | | | | | | | | | | |
| | | | | | | | | | | |
| | | | | | | | | | | |
| | | | | | | | | | | |
| | | | | | | | | | | |
| | | | | | | | | | | |
| | | | | | | | | | | |
| | | | | | | | | | | |
| | | | | | | | | | | |
| | | | | | | | | | | |
| | | | | | | | | | | |
| | | | | | | | | | | |
| | | | | | | | | | | |
| | | | | | | | | | | |
| | | | | | | | | | | |
| | | | | | | | | | | |
| | | | | | | | | | | |
| | | | | | | | | | | |
| | | | | | | | | | | |
| | | | | | | | | | | |
| | | | | | | | | | | |
| | | | | | | | | | | |
| | | | | | | | | | | |
| | | | | | | | | | | |
| | | | | | | | | | | |
| | | | | | | | | | | |
| | | | | | | | | | | |
| | | | | | | | | | | |

Kowhitirangi

| Description | Date | RPM | % DM | % Prot | % Lipid | % ADF | % NDF | Sol Sugar | OMD % | MJME /kg |
|-------------|----------|------|------|--------|---------|-------|-------|-----------|-------|----------|
| Paddock 5b | 17/07/19 | 13.8 | 14.3 | 24.3 | 3.9 | 18.4 | 43.1 | 14.2 | 85.2 | 12.4 |
| Paddock 3c | 4/09/19 | 10.8 | 17.3 | 24.0 | 3.5 | 15.7 | 36.1 | 21.1 | >85 | 12.6 |
| Paddock 9b | 9/10/19 | 8.9 | 15.0 | 25.6 | 3.3 | 22.3 | 45.2 | 10.5 | 83.3 | 12.2 |
| Paddock 15a | 6/11/19 | 9.0 | 13.5 | 23.7 | 3.8 | 20.4 | 43.8 | 12.2 | >85 | 12.5 |
| Paddock 13a | 4/12/19 | 13.3 | 11.5 | 29.4 | 3.2 | 24.5 | 43.3 | 6.4 | 85.0 | 12.4 |
| Paddock 13b | 15/1/20 | 10.0 | 19.5 | 18.8 | 3.4 | 24.1 | 44.7 | 13.8 | 76.8 | 11.2 |
| Paddock 4a | 5/2/20 | 13.8 | 9.9 | 24.8 | 3.3 | 30.5* | 53.1 | 2.1 | 76.0 | 11.1 |
| | | | | | | | | | | |
| | | | | | | | | | | |
| | | | | | | | | | | |
| | | | | | | | | | | |
| | | | | | | | | | | |
| | | | | | | | | | | |
| | | | | | | | | | | |
| | | | | | | | | | | |
| | | | | | | | | | | |
| | | | | | | | | | | |
| | | | | | | | | | | |
| | | | | | | | | | | |
| | | | | | | | | | | |
| | | | | | | | | | | |
| | | | | | | | | | | |
| | | | | | | | | | | |
| | | | | | | | | | | |
| | | | | | | | | | | |
| | | | | | | | | | | |
| | | | | | | | | | | |
| | | | | | | | | | | |
| | | | | | | | | | | |
| | | | | | | | | | | |
| | | | | | | | | | | |
| | | | | | | | | | | |
| | | | | | | | | | | |
| | | | | | | | | | | |
| | | | | | | | | | | |
| | | | | | | | | | | |
| | | | | | | | | | | |
| | | | | | | | | | | |
| | | | | | | | | | | |
| | | | | | | | | | | |
| | | | | | | | | | | |
| | | | | | | | | | | |
| | | | | | | | | | | |
| | | | | | | | | | | |
| | | | | | | | | | | |
| | | | | | | | | | | |
| | | | | | | | | | | |

* Test analytes which have occurred as outliers on the NIRS calibration are indicated by * and should be treated as an approximation only.