

Westland Monitor Farm Project

Weekly Update as at week ending Wednesday 13th November 2019

CO Comment

Mating has begun for all the West Coast now, in time with some more sunshine hours starting to show in the days. This should start to boost grass growth rates along with a rise in grass sugar levels, resulting in more energy to the cows. Cow heats will become stronger and more visible for ease of detection. For those that recorded pre-mating heats, take note now who has not cycled – are they early calvers who have not come up yet, or later calving cows that are still under 49 days since they calved? For those early calved/anoestrus cows, talk to a vet about intervention methods or cutting them out and putting on a Once a Day milking routine. This will focus more energy towards the cow's body and cycling while still achieving production.

Farmers will be looking to wean calves now they are 10-12+ weeks old, ensure weighing of calves pre-weaning. 100kg for Friesian, 90-95kg for Crossbreds, and 80-90kg for Jersey calves. Follow by a few more weeks of meal and hay to help transition to a full grass diet. For those lighter stragglers in the mob, draft out and continue milk feeding along with meal. Research shows while a calf is still on milk and meal it will result in optimum growth and weight gains rather than trying to focus preferential treatment and feeding after weaning through to yearling age or even 2 years old.

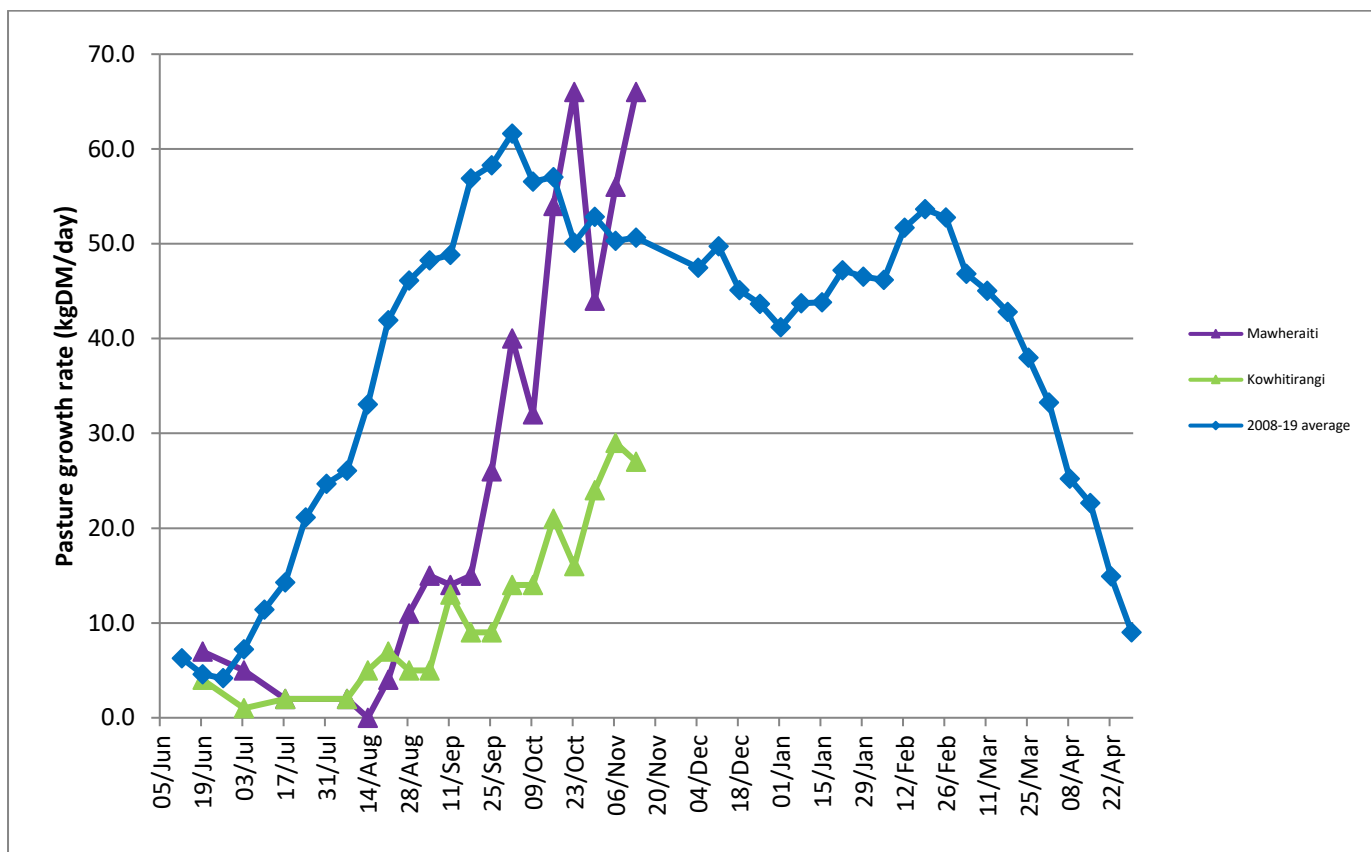
An oral drench pre-weaning can also assist with not stunting these calves when the milk ceases, giving them the tools to fight against picking up a worm burden with the increase in pasture consumption. Shift weaned calves regularly so they are getting the cream of the crop grass and avoid pushing them to eat pasture to low residuals at this young age.

Farm Summary

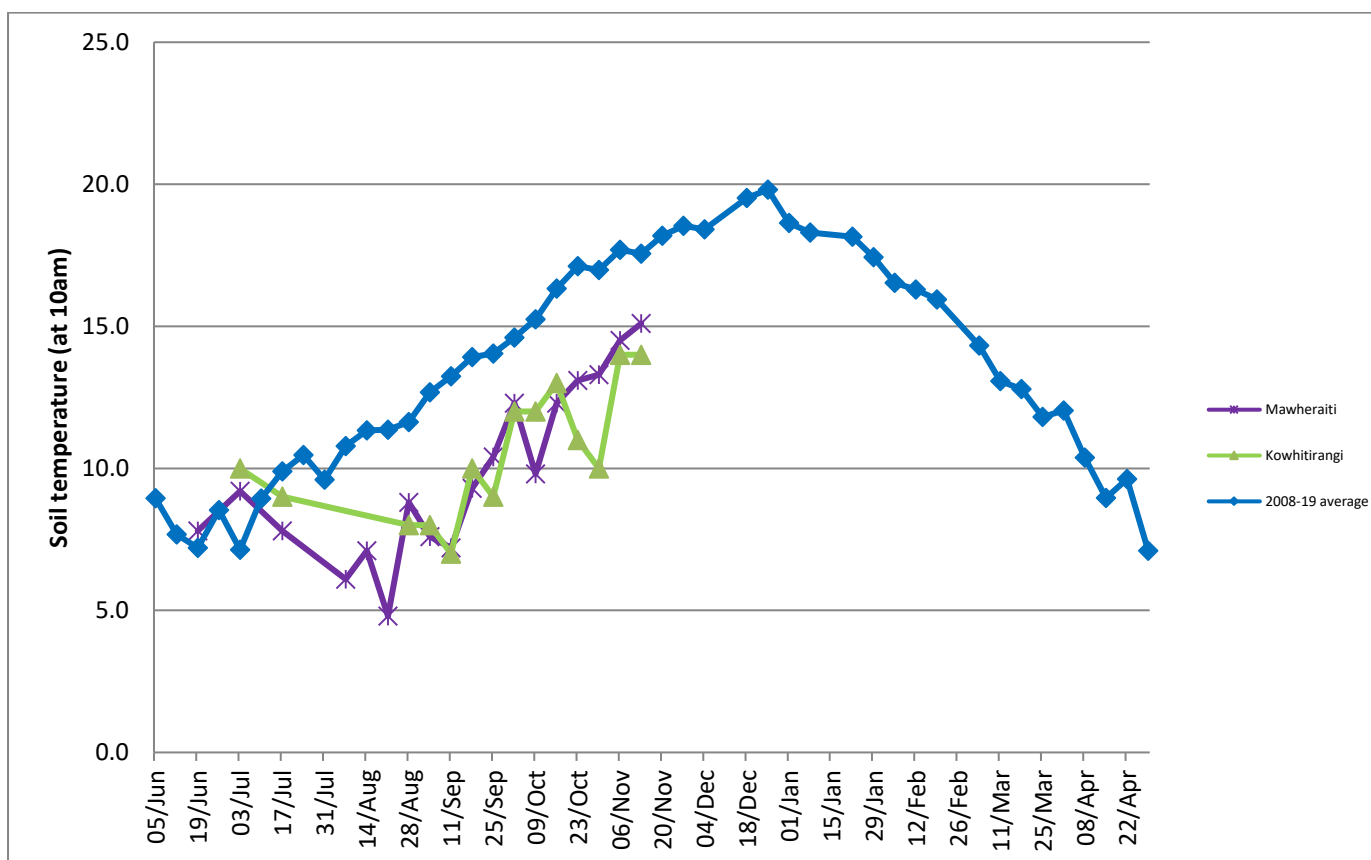
	Mawheraiti	Kowhitirangi
Average cover (kg DM/ha)	2411	1952
APC (3 July)	2300	1925
Rotation length (days)	24	20
Stocking rate	2.5	2.4
Percentage in milk	100	100
Milksolids kg/cow	1.91	2.06
Milksolids kg/ha	4.8	4.4
MS/cow (season to date)	133	156
MS/ha (season to date)	334	310
N (kg/ha) year to date	65	74
Current N application rate kg N/ha	24	-
	4 Nov	6 Nov
DM%	15.4	13.5
Pasture ME	12.2	12.5
Pasture NDF	46.6	43.8
Pasture CP	16.3	23.7
Target Intake (kg DM/cow/d)	19	18
Supplement (kg/cow/day)	0	4
Soil temperature (°C)	15.1	14
Growth Rate (kg DM/day)	66	27
Rainfall	70	325
Conditions for farmwalk	Fine and warm	Raining, heavy at times. Farm very wet

NB: pasture quality data are for 1 sample collected from each farm

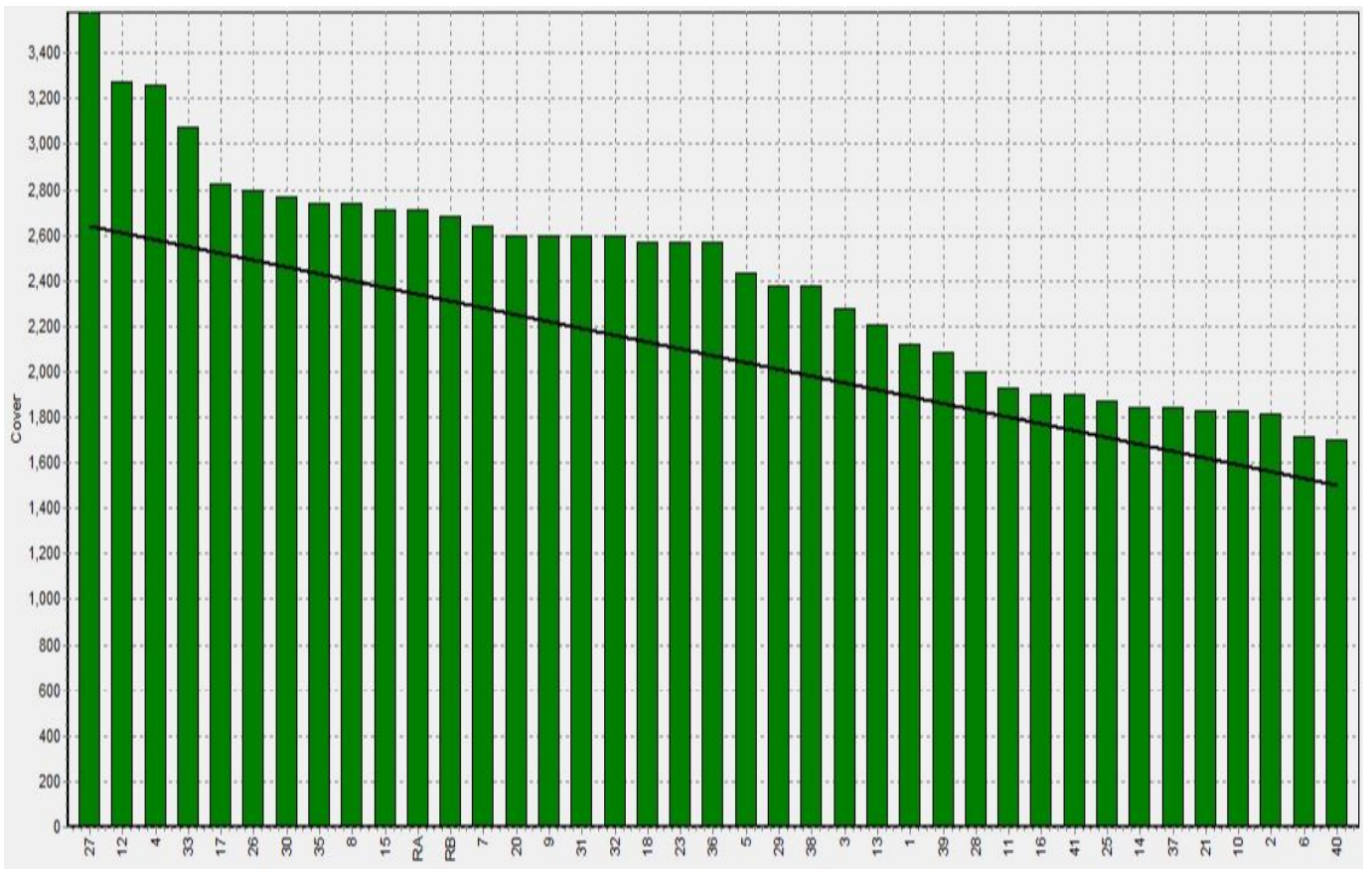
Weekly Pasture Growth Rates



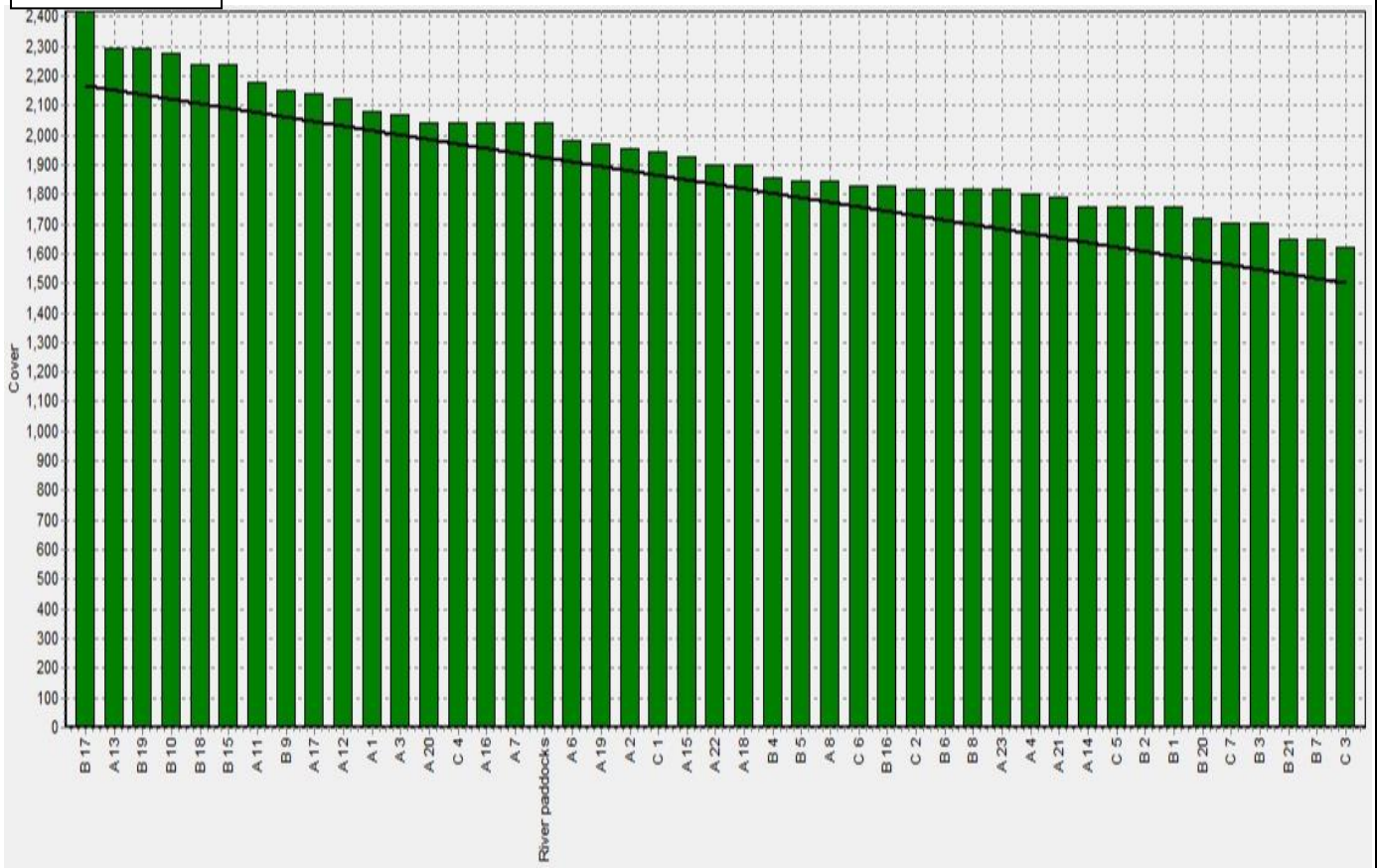
Weekly Soil Temperature



Mawheraiti



Kowhitirangi



Mawheraiti

Description	Date	RPM	% DM	% Prot	% Lipid	% ADF	% NDF	Sol Sugar	OMD %	MJME/kg
Paddock 2	15/07/19	15.4	12.7	30.2	3.8	19.2	38.4	8.5	88.8	13.0
Paddock 17	2/09/19	16.8	15.5	24.0	4.7	11.4	48.3	12.0	84.4	12.3
Paddock 2	4/11/19	13.0	15.4	16.3	3.4	22.1	46.6	16.5	83.2	12.2

Kowhitirangi

Description	Date	RPM	% DM	% Prot	% Lipid	% ADF	% NDF	Sol Sugar	OMD %	MJME /kg
Paddock 5b	17/07/19	13.8	14.3	24.3	3.9	18.4	43.1	14.2	85.2	12.4
Paddock 3c	4/09/19	10.8	17.3	24.0	3.5	15.7	36.1	21.1	>85	12.6
Paddock 9b	9/10/19	8.9	15.0	25.6	3.3	22.3	45.2	10.5	83.3	12.2
Paddock 15a	6/11/19	9.0	13.5	23.7	3.8	20.4	43.8	12.2	>85	12.5

