

Westland Monitor Farm Project

Weekly Update as at week ending Wednesday 13th May 2020

CO Comment

As you may know, the West Coast Focus Farm Trust is kindly donated 1500 straws of semen from CRV Ambreed to make available to tender for West Coast dairy farmers. This initiative enables the Trust to keep the consistency of its data through monitoring weekly pasture growth rates on the monitor farms. This data is then combined with financial data from the monitor farms to produce metrics of profitability and analysis of the farm system.

Normally the tender documents would have been available much earlier than now but in light of recent circumstances, this year the process has been delayed.

The Trust has released the tender form this week and it is available to fill in and return. You can find it on the Westland Milk Products Supplier Portal or get a copy of it from the Trust directly.

The process is simple and you can effectively double-down on what is a relatively 'fixed' on-farm spend by using your purchase to not only get the product you require but also support a local organization with the view of enhancing profitable farming in your region.

The West Coast Focus Farm Trust has also set up a Facebook page that has been designed to allow farmers more visibility into the Trust, and the monitor farms activity.

It's still early days but head to <https://www.facebook.com/West-Coast-Focus-Farm-Trust-102922651426431/> to have a look, like the page and join the conversation.

There is also a copy of the tender document on the Facebook page to print and send in.

If you have any questions regarding the tender process you can call Angela Leslie on 021 277 2894 or Jack Raharuhi on 027 838 7295.

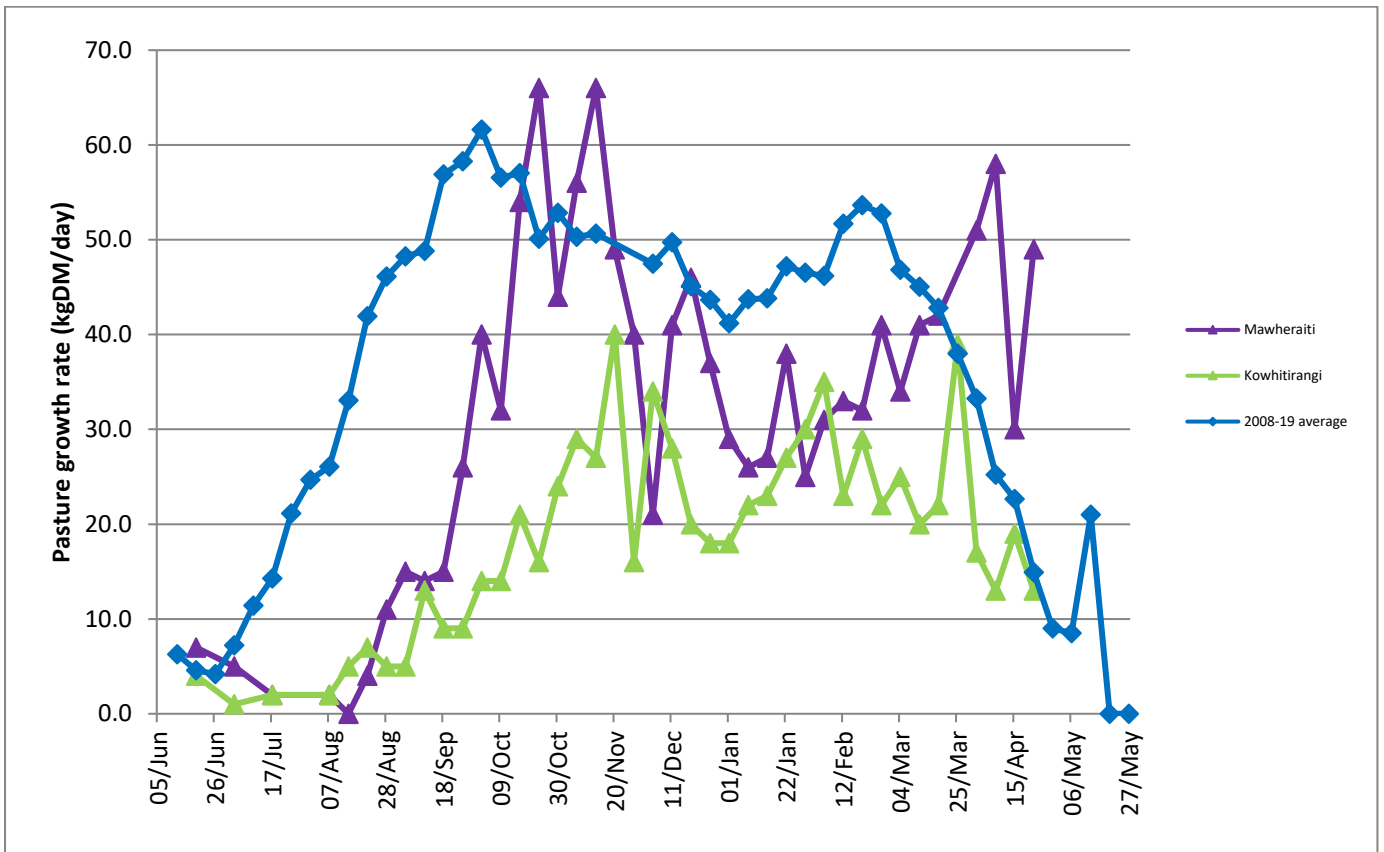
The Trust is looking forward to receiving your tenders!

Farm Summary

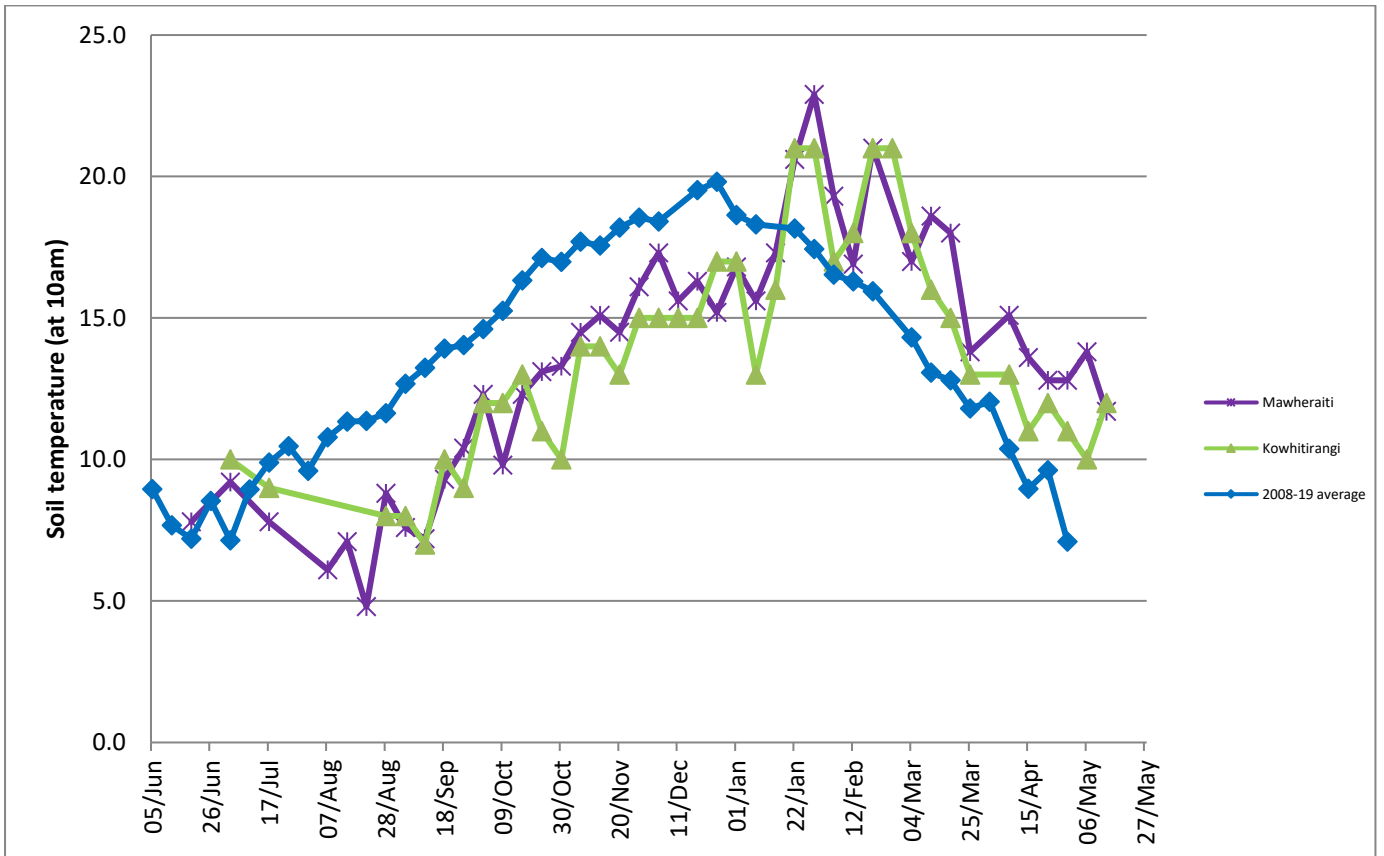
	Mawheraiti	Kowhitirangi
Average cover (kg DM/ha)	2072	1876
APC (6 May)	2098	1854
Rotation length (days)	30	41
Stocking rate	2.2	1.9
Percentage in milk	99	100
Milksolids kg/cow	1.59	1.55
Milksolids kg/ha	3.2	2.8
MS/cow (season to date)	405	454
MS/ha (season to date)	1018	904
N (kg/ha) year to date	260	282
Current N application rate kg N/ha	25	-
	2 Mar	4 Mar
DM%	11.4	11.6
Pasture ME	11.5	11.9
Pasture NDF	48.4	45.0
Pasture CP	28.5	29.5
Target Intake (kg DM/cow/d)	17	17
Supplement (kg/cow/day)	5	8
Soil temperature (°C)	11.7	12
Growth Rate (kg DM/day)	30	12
Rainfall	48	77
Conditions for farmwalk	Low cloud, rain close. Poured with rain after farm walk	Fine and warm. Farm very wet

NB: pasture quality data are for 1 sample collected from each farm

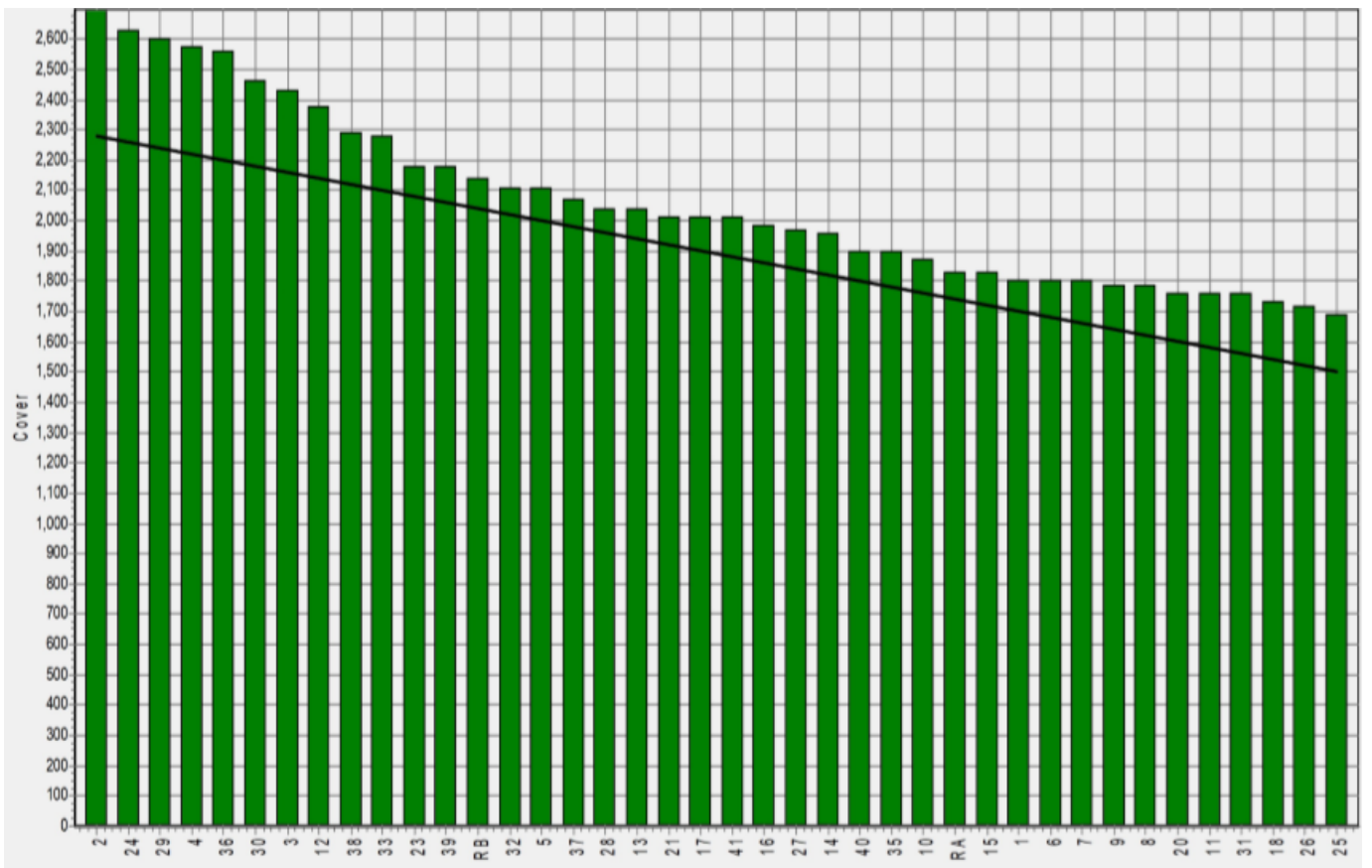
Weekly Pasture Growth Rates



Weekly Soil Temperature



Mawheraiti



Kowhitirangi

