

# Westland Monitor Farm Project

Weekly Update as at week ending Wednesday 15<sup>th</sup> January 2020

## CO Comment

Early aged pregnancy diagnosis (EAPD) is a good tool to be using shortly to provide you with a lot of valuable information. Getting pregnancies aged means you will know exact conception dates. This will accurately illustrate how your cows got in calf over the mating period.

The reproduction information available on MINDA can help you to plan for dry off and into next spring. MINDA Reproduction's Pre-Calving tab can be used to develop a more accurate indication of feed demand through the calving period and estimate how many calves will be filling your sheds. By having an accurate indication of when cows will be calving, this information can be used in conjunction with body condition scoring to determine when cows will need to be dried off to be at their target BCS at calving.

With accurate expected calving dates, you can better identify the late calvers for potential culling, make dry-off decisions based on body condition score and expected calving date, and know when any cows wintered off farm need to be off the wintering blocks. EAPD produces in-calf and conception rate information through the mating period, which means you are better able to identify who the problem cows were, when the problem period was and help modify the mating plan to achieve the desired results next season.

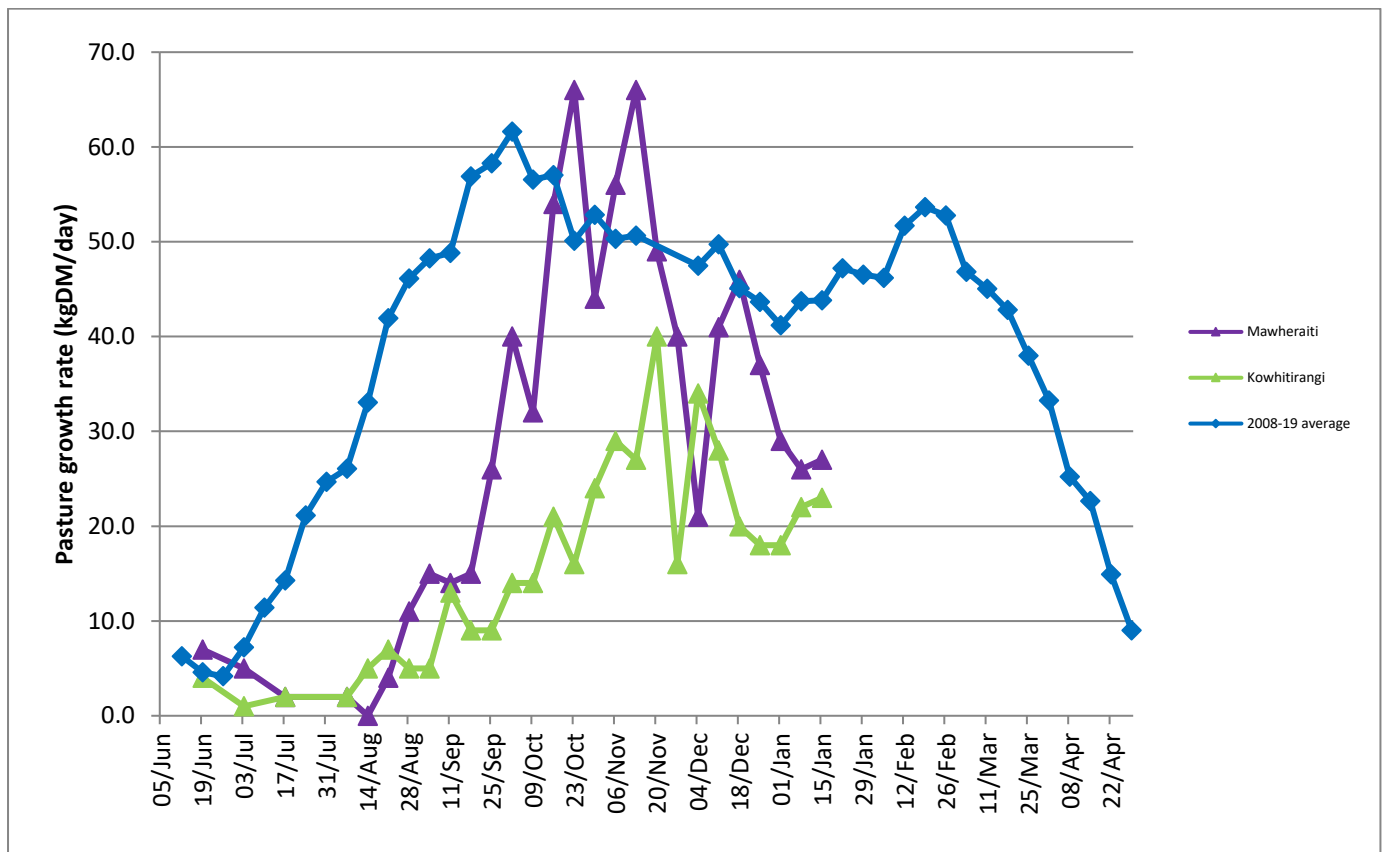
EAPD is something that you should discuss and plan with your vet. There can be a high demand for EAPD, so it is best to talk to the vet early so they can plan the best time to complete this and secure your space.

## Farm Summary

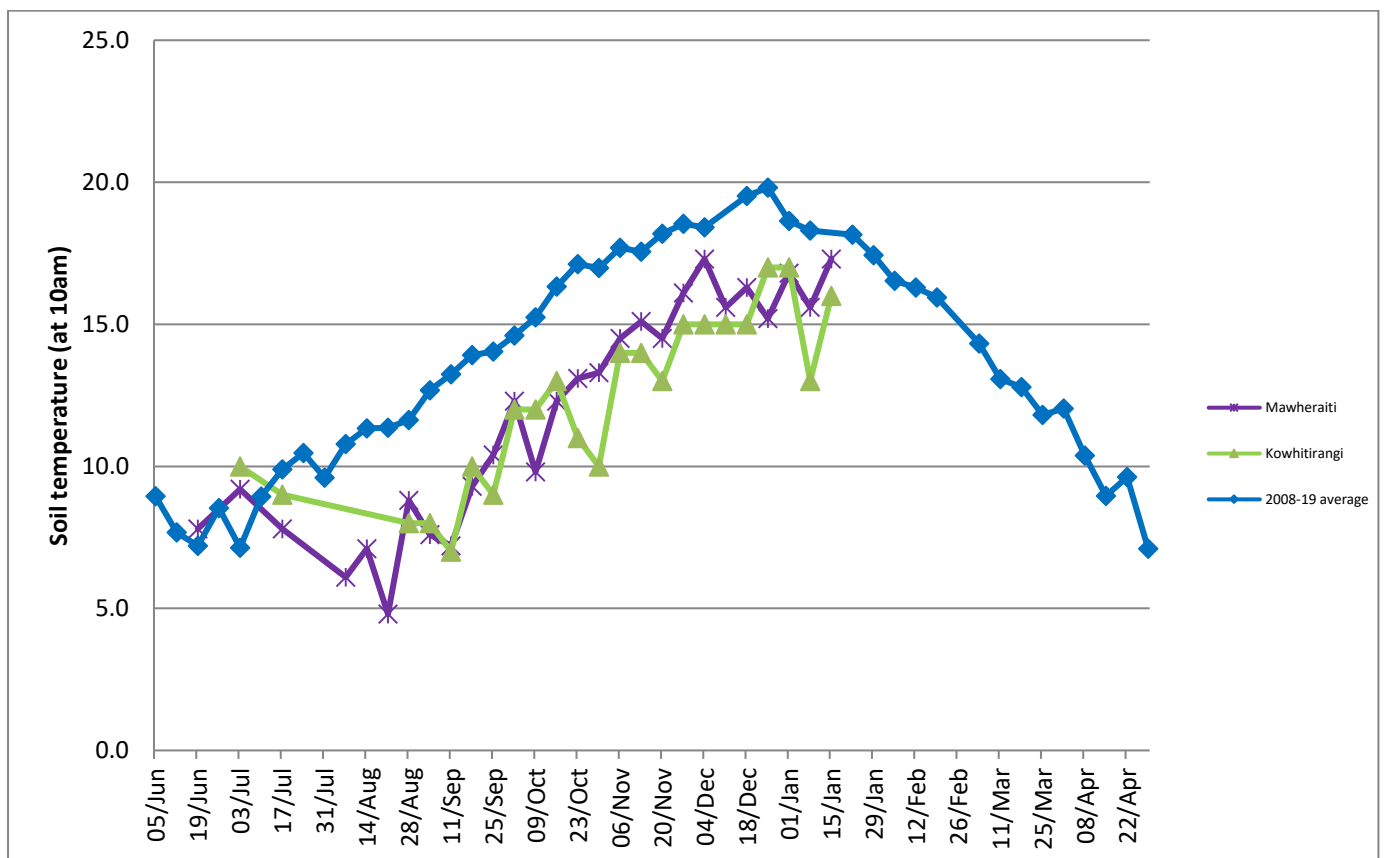
	Mawheraiti	Kowhitirangi
Average cover (kg DM/ha)	2027	1947
APC (3 July)	2016	1969
Rotation length (days)	27	23
Stocking rate	2.4	2.3
Percentage in milk	100	100
Milksolids kg/cow	1.62	1.58
Milksolids kg/ha	3.9	3.3
MS/cow (season to date)	239	275
MS/ha (season to date)	600	548
N (kg/ha) year to date	122	175
Current N application rate kg N/ha	24	-
	2 Dec	4 Dec
DM%	15.3	11.5
Pasture ME	11.6	12.4
Pasture NDF	44.0	44.3
Pasture CP	20.6	29.4
Target Intake (kg DM/cow/d)	19	18
Supplement (kg/cow/day)	1.7	2
Soil temperature (°C)	17.3	16
Growth Rate (kg DM/day)	27	23
Rainfall	35	70
Conditions for farmwalk	Hot and fine	Hot and fine

NB: pasture quality data are for 1 sample collected from each farm

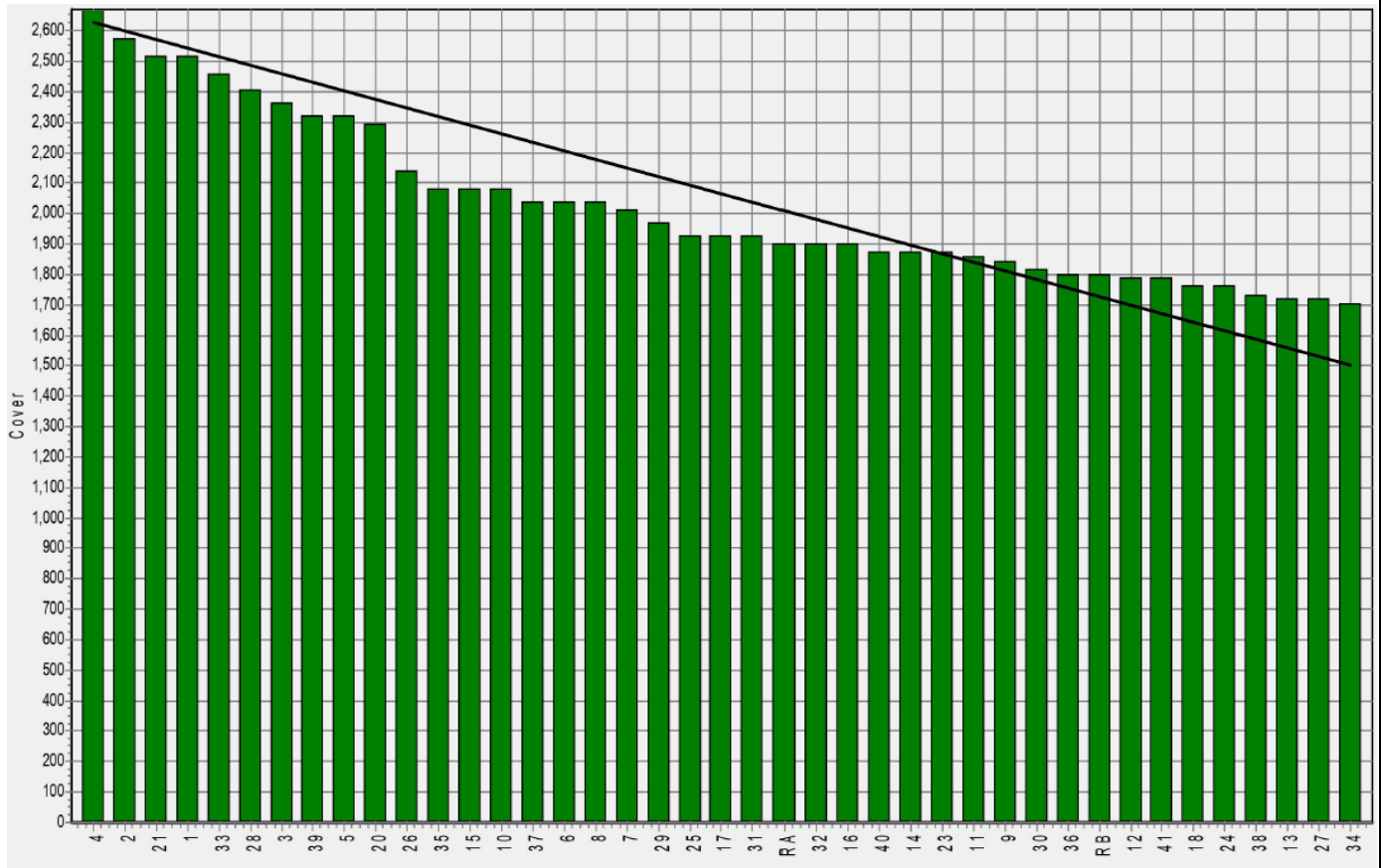
## Weekly Pasture Growth Rates



## Weekly Soil Temperature



### Mawheraiti



### Kowhitirangi

