

Westland Monitor Farm Project

Weekly Update as at week ending Wednesday 15th April 2020

CO Comment

With the cold snap that has hit over the past week, we should be starting to see pasture growth rates across the West Coast drop.

Having a feed budget is essential to making the best decisions around managing your feed requirements.

The simple feed budget is a useful tool for proactive decision making. This budget can be used at any stage of the season but is best used as a partial budget for the following periods:

- As an autumn budget through to June 1 or dry off cover target
- As a winter budget from June 1 through to Planned Start of Calving
- From Planned Start of Calving through to Balance Date.

For more information, visit www.dairynz.co.nz/feed/pasture-management/assessing-farm-performance/feed-budgets/

Whilst a feed budget can aid in decision making, the body condition score (BCS) of your herd should also be considered.

Cows with 1 BCS lower than target will:

- Take 8-10 days longer to start cycling
- Result in a later calving date the following year
- Produce approx. 15kg milk solids less in the following lactation.

Remember realistically dry cows only gain ½ BCS in 30 days unless very well fed with high quality supplement. Do not expect cows to gain BCS during their final month of pregnancy.

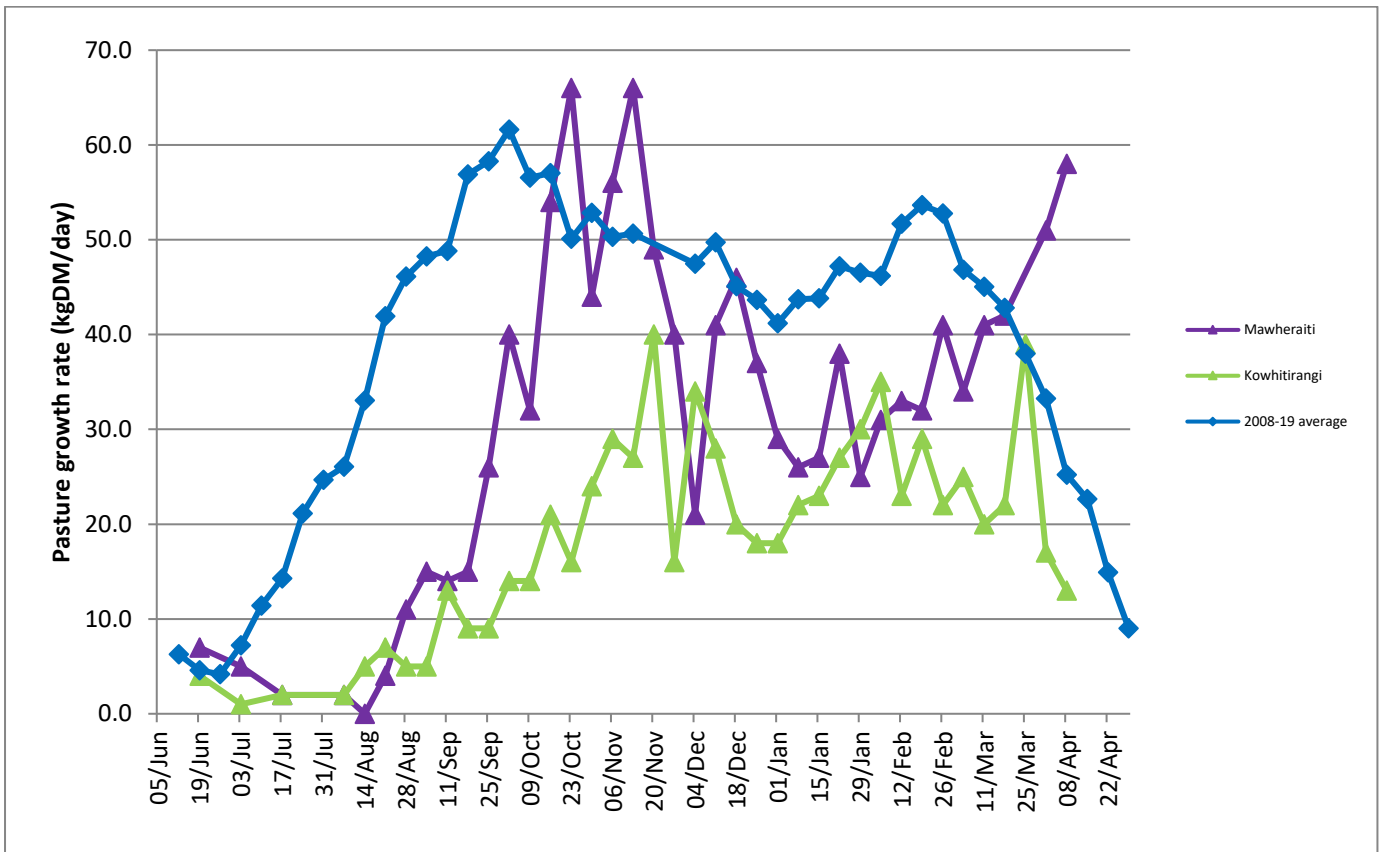
For body condition score strategies visit www.dairynz.co.nz/animal/body-condition-scoring/bcs-strategies/

Farm Summary

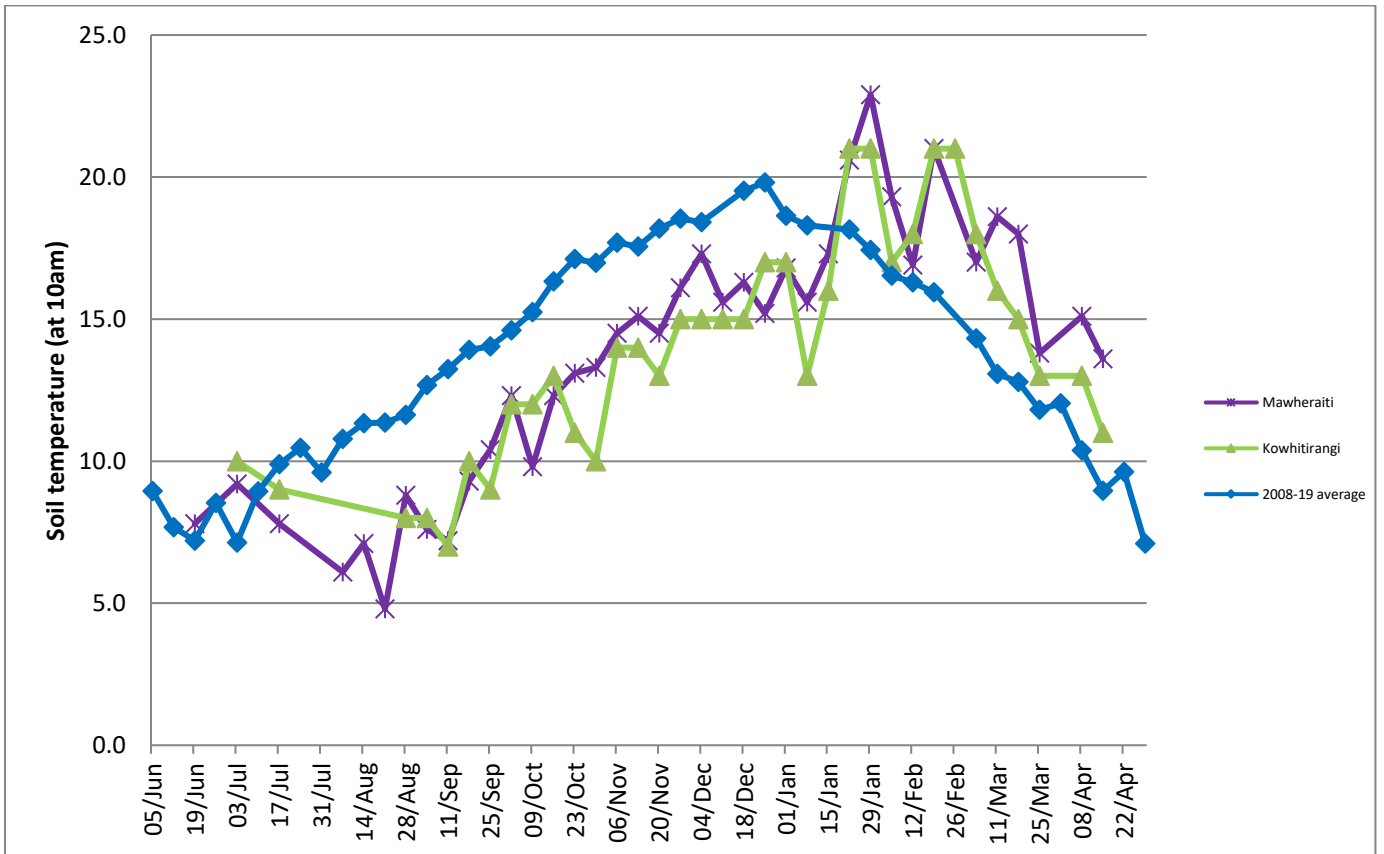
	Mawheraiti	Kowhitirangi
Average cover (kg DM/ha)	2675	1971
APC (8 April)	2595	2086
Rotation length (days)	29	28
Stocking rate	2.3	2.3
Percentage in milk	100	100
Milksolids kg/cow	1.55	1.64
Milksolids kg/ha	3.4	3.4
MS/cow (season to date)	369	415
MS/ha (season to date)	924	827
N (kg/ha) year to date	230	207
Current N application rate kg N/ha	25	-
	2 Mar	4 Mar
DM%	11.4	11.6
Pasture ME	11.5	11.9
Pasture NDF	48.4	45.0
Pasture CP	28.5	29.5
Target Intake (kg DM/cow/d)	17	18
Supplement (kg/cow/day)	2	2
Soil temperature (°C)	13.6	11
Growth Rate (kg DM/day)	58	13
Rainfall	50	105
Conditions for farmwalk	-	-

NB: pasture quality data are for 1 sample collected from each farm

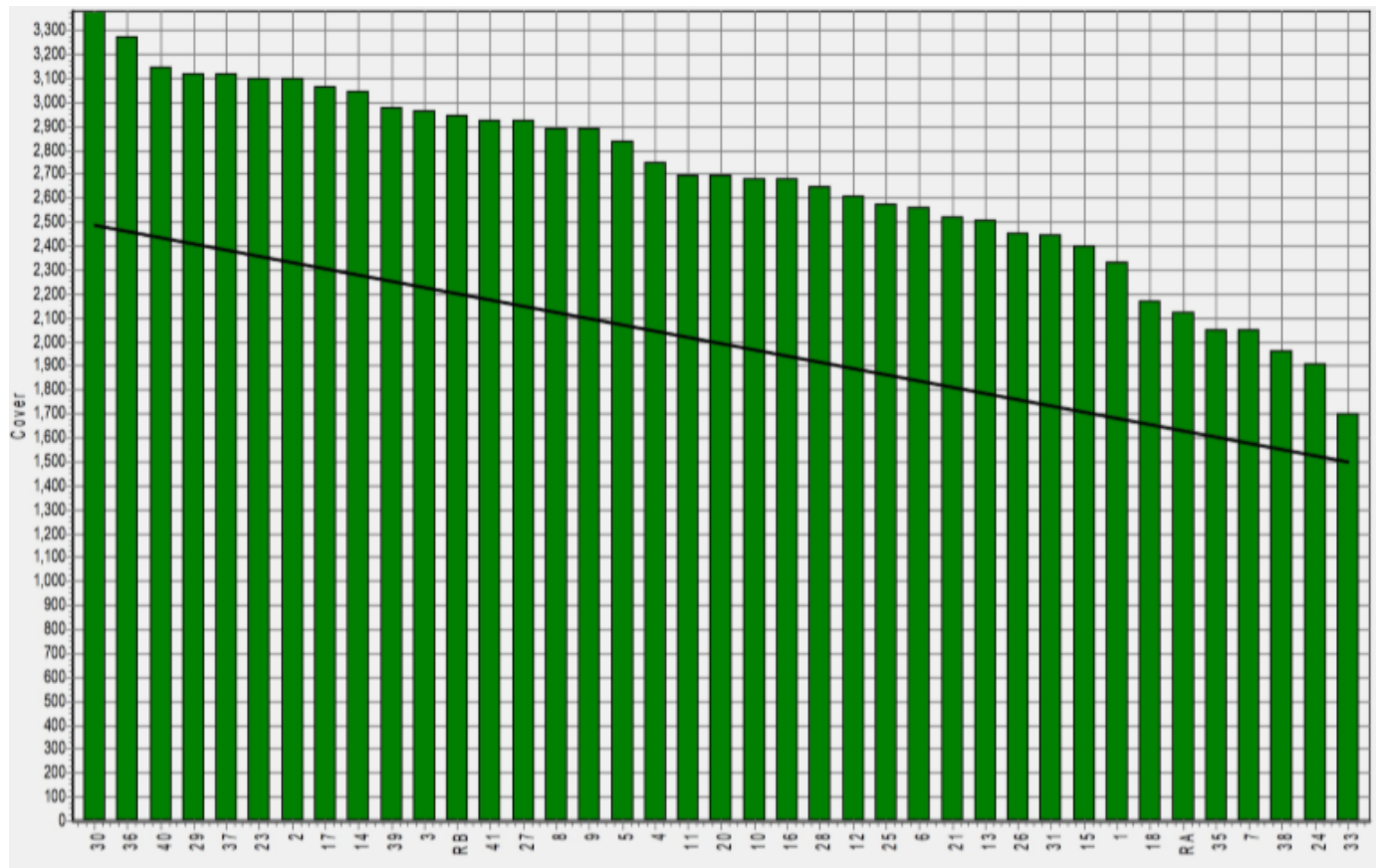
Weekly Pasture Growth Rates



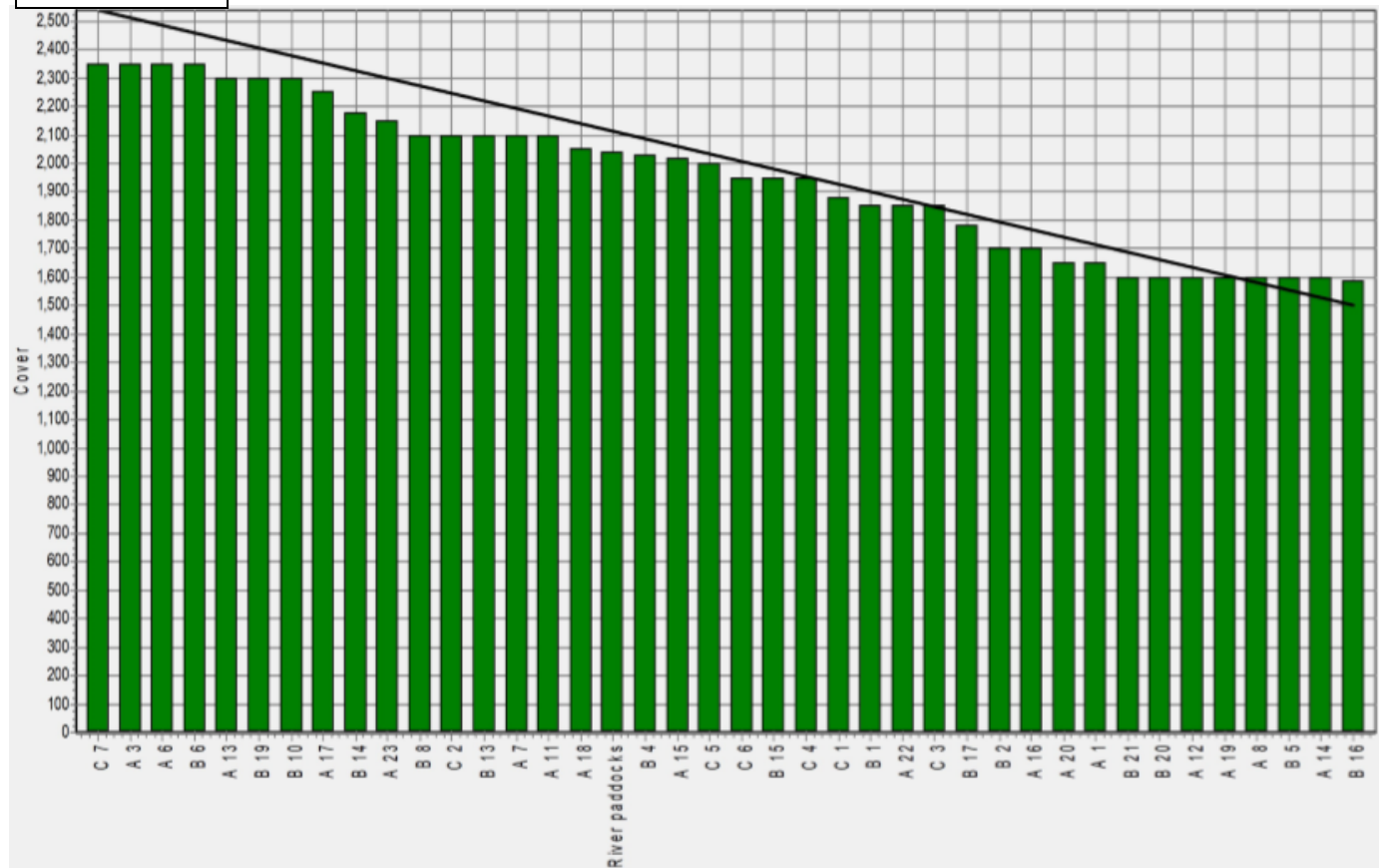
Weekly Soil Temperature



Mawheraiti



Kowhitirangi



Kowhitirangi

Description	Date	RPM	% DM	% Prot	% Lipid	% ADF	% NDF	Sol Sugar	OMD %	MJME /kg
Paddock 5b	17/07/19	13.8	14.3	24.3	3.9	18.4	43.1	14.2	85.2	12.4
Paddock 3c	4/09/19	10.8	17.3	24.0	3.5	15.7	36.1	21.1	>85	12.6
Paddock 9b	9/10/19	8.9	15.0	25.6	3.3	22.3	45.2	10.5	83.3	12.2
Paddock 15a	6/11/19	9.0	13.5	23.7	3.8	20.4	43.8	12.2	>85	12.5
Paddock 13a	4/12/19	13.3	11.5	29.4	3.2	24.5	43.3	6.4	85.0	12.4
Paddock 13b	15/1/20	10.0	19.5	18.8	3.4	24.1	44.7	13.8	76.8	11.2
Paddock 4a	5/2/20	13.8	9.9	24.8	3.3	30.5*	53.1	2.1	76.0	11.1
Paddock 14a	4/3/20	16.0	11.6	29.5	3.3	22.9	45.0	6.4	81.7	11.9

* Test analytes which have occurred as outliers on the NIRS calibration are indicated by * and should be treated as an approximation only.