

# Westland Monitor Farm Project

Weekly Update as at week ending Wednesday 16<sup>th</sup> October 2019

## CO Comment

Finally, some warm sunshine this week! Grass around the region is looking a healthy green state now and growing rather than pale and yellow due to lack of sunshine hours.

Farmers are flat out getting fertiliser applied, trying to work and look to sow down winter crop paddocks and the occasional farm has managed to take a small cut of silage off surplus land to the dairy platform.

Manage round length so it can build the feed wedge according to growth rates and as things improve over the next week to 10 days, with the hopeful goal of growth meeting demand and being able to minimise supplements fed.

The round of discussion groups is continuing across the region over the next week, talking cows, grass, current situations on farms, the Freshwater package, what's instore for the area from DairyNZ, and much more so take a look at the link below and get along to an event near you.

<https://www.dairynz.co.nz/events/?region=5454>

Reminder that we encourage all farmers to make a submission on the proposed Essential Freshwater Package. Only 10 days until this closes now.

In your submission, you can include comments on what you agree with and what you disagree with. If you disagree with a proposal, do you have ideas for an alternative which could be effective? You can also include comments about what you are already doing on your farm to improve water quality.

Submissions close on October 31 and can be made at <https://www.dairynz.co.nz/environment/in-your-region/essential-freshwater-package/>

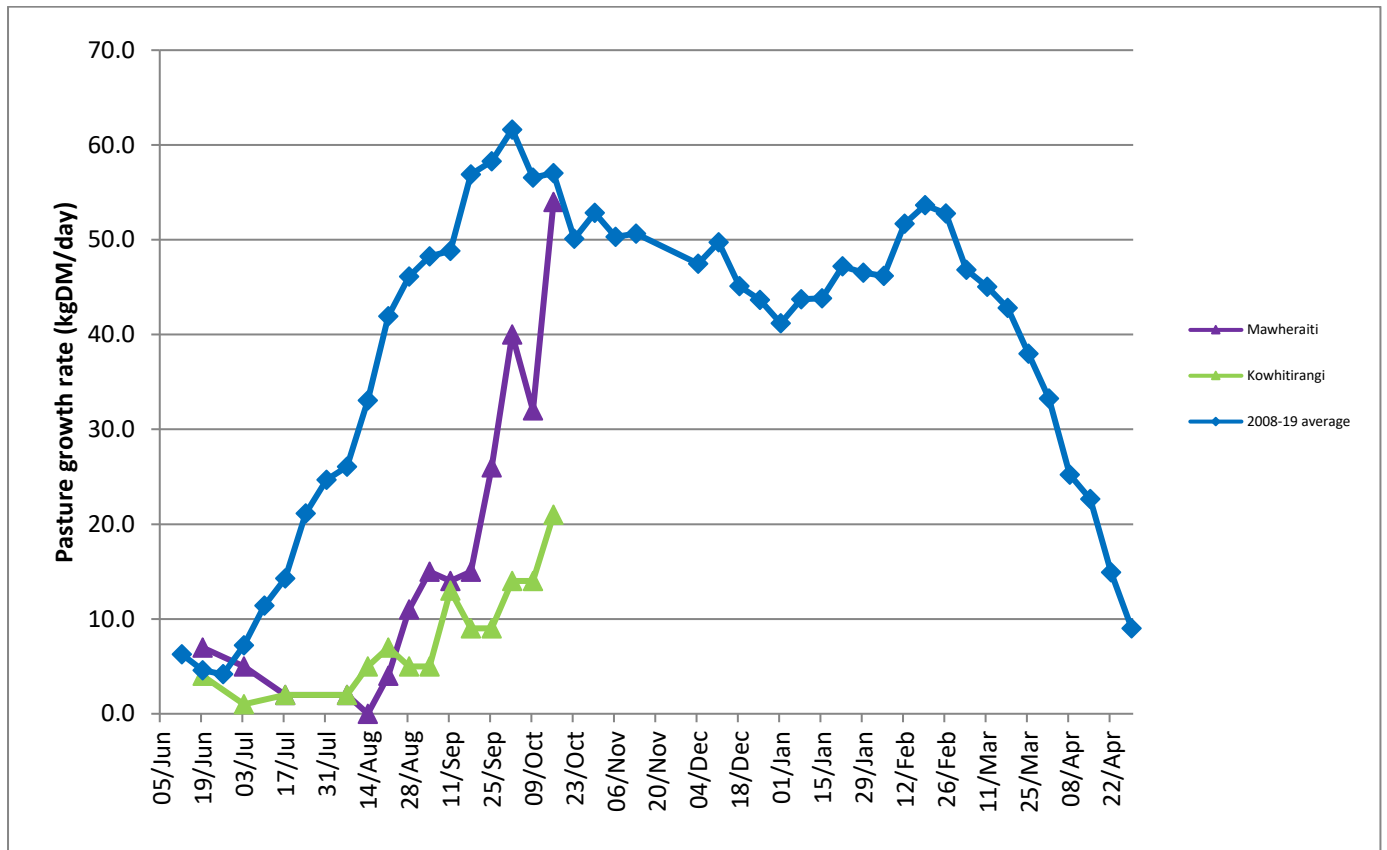
If you would like to discuss the process around submissions or any concerns about what this may mean for your business feel free to contact DairyNZ at <https://www.dairynz.co.nz/contact-us/regional-teams/?region=6803>

## Farm Summary

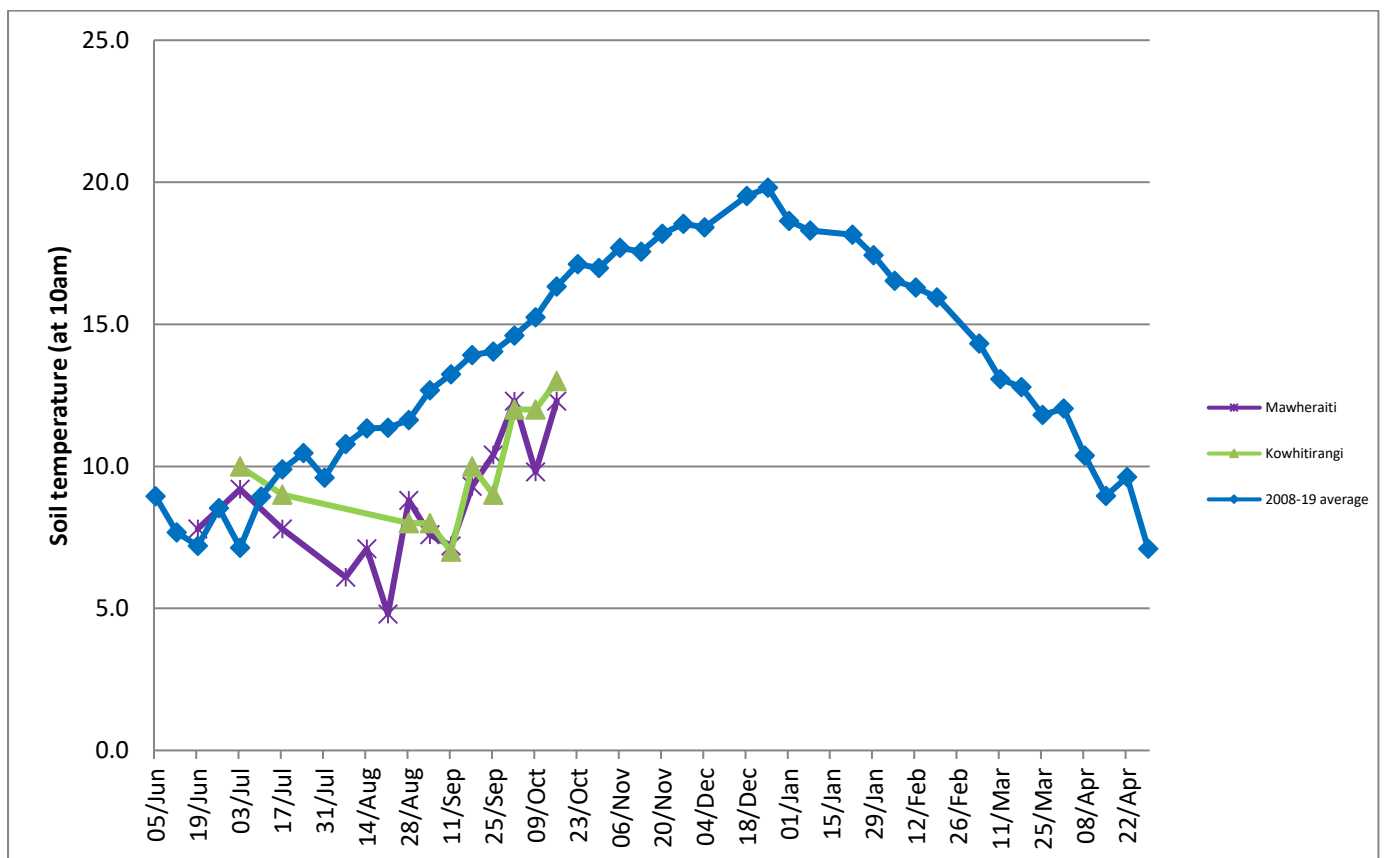
|                                    | Mawheraiti                   | Kowhitirangi                 |
|------------------------------------|------------------------------|------------------------------|
| Average cover (kg DM/ha)           | 2200                         | 1857                         |
| APC (3 July)                       | 2142                         | 1859                         |
| Rotation length (days)             | 28                           | 24                           |
| Stocking rate                      | 2.4                          | 2.3                          |
| Percentage in milk                 | 100                          | 100                          |
| Milksolids kg/cow                  | 2.21                         | 2.05                         |
| Milksolids kg/ha                   | 5.3                          | 4.5                          |
| MS/cow (season to date)            | 77                           | 99                           |
| MS/ha (season to date)             | 192                          | 197                          |
|                                    |                              |                              |
| N (kg/ha) year to date             | 44                           | 51                           |
| Current N application rate kg N/ha | 24                           | 7                            |
|                                    |                              |                              |
|                                    | 2 Sept                       | 9 Oct                        |
| DM%                                | 15.5                         | 15.0                         |
| Pasture ME                         | 12.3                         | 12.2                         |
| Pasture NDF                        | 48.3                         | 45.2                         |
| Pasture CP                         | 24.0                         | 25.6                         |
|                                    |                              |                              |
| Target Intake (kg DM/cow/d)        | 19                           | 18                           |
| Supplement (kg/cow/day)            | 3.7                          | 3                            |
|                                    |                              |                              |
| Soil temperature (°C)              | 12.3                         | 13                           |
| Growth Rate (kg DM/day)            | 54                           | 21                           |
| Rainfall                           | 40                           | 165                          |
| Conditions for farmwalk            | Fine and warm, farm very wet | Fine and warm, beautiful day |

NB: pasture quality data are for 1 sample collected from each farm

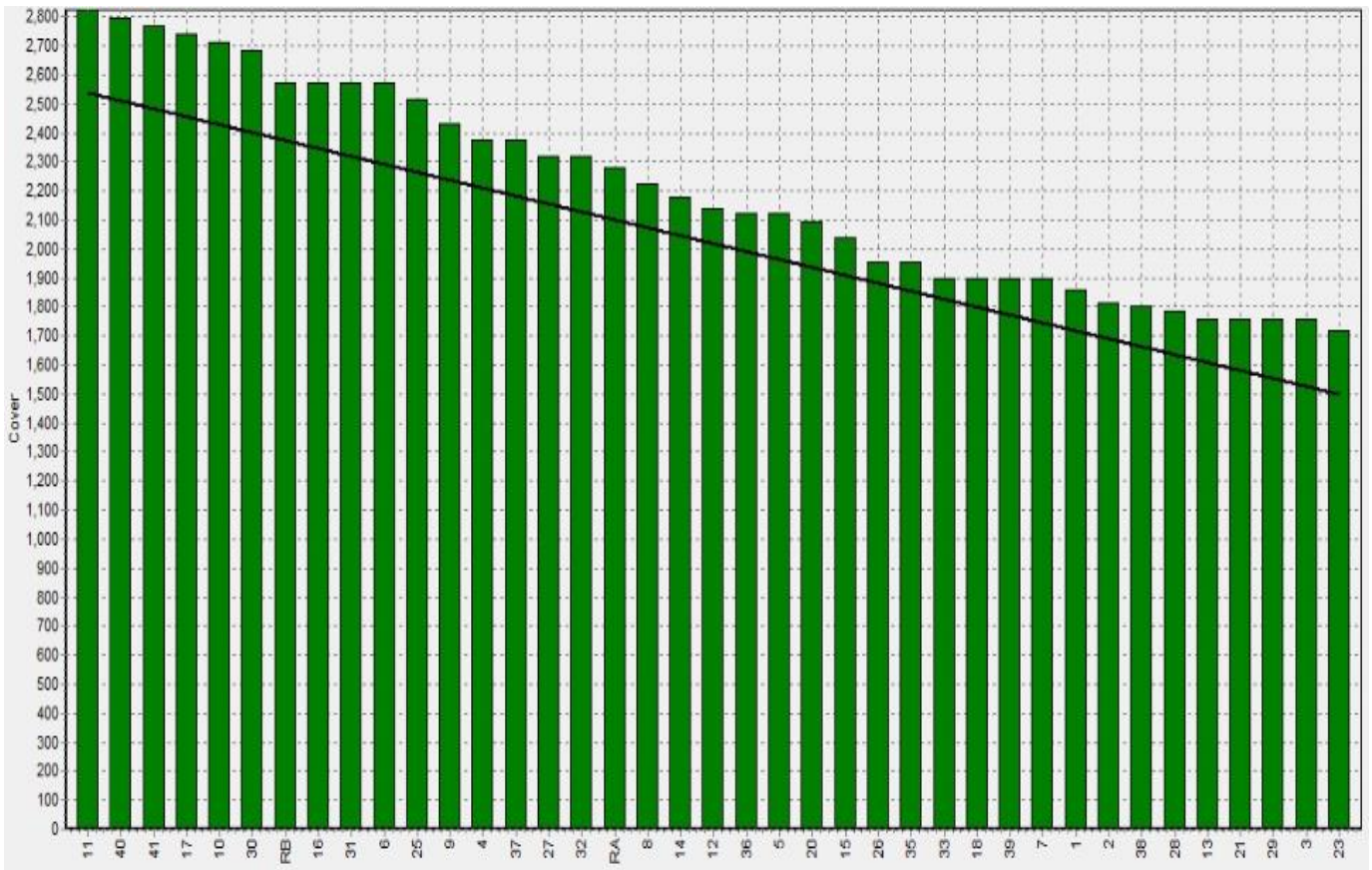
## Weekly Pasture Growth Rates



## Weekly Soil Temperature



### Mawheraiti



### Kowhitirangi

