

Westland Monitor Farm Project

Weekly Update as at week ending Wednesday 18th December 2019

CO Comment

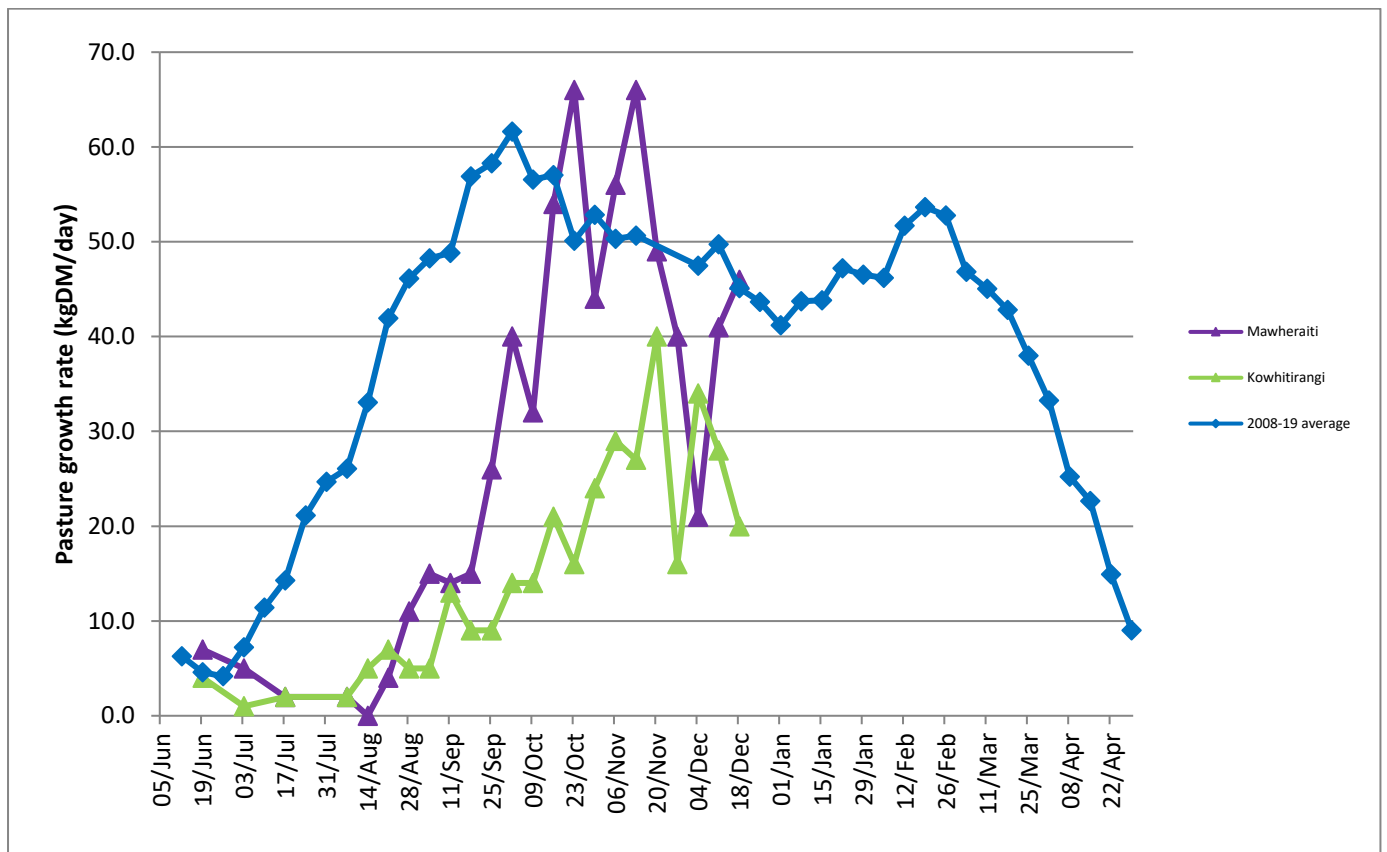
Before the festive season hits top gear, and you or your staff head off on a summer break, it is a good time to check on young stock at grazing. They will need to be meeting their liveweight targets to ensure that they are given the best chance possible to express their potential as future herd members. Ensure all staff are familiar with the Christmas/New Year roster and know when they are expected back at work and what they will be responsible for during this period. With many farm servicing businesses closing for two weeks, think about supplies that you may need to have on hand. Not having spare cluster bowls on Christmas day is no fun for anyone. Ensure that you have a good couple of days relaxing and enjoying the festive season, even if you are the one who drew the short straw to milk. Thank you for reading and supporting the monitor farms through 2019 and the team at DairyNZ would like to wish everyone a safe and Merry Christmas and festive season.

Farm Summary

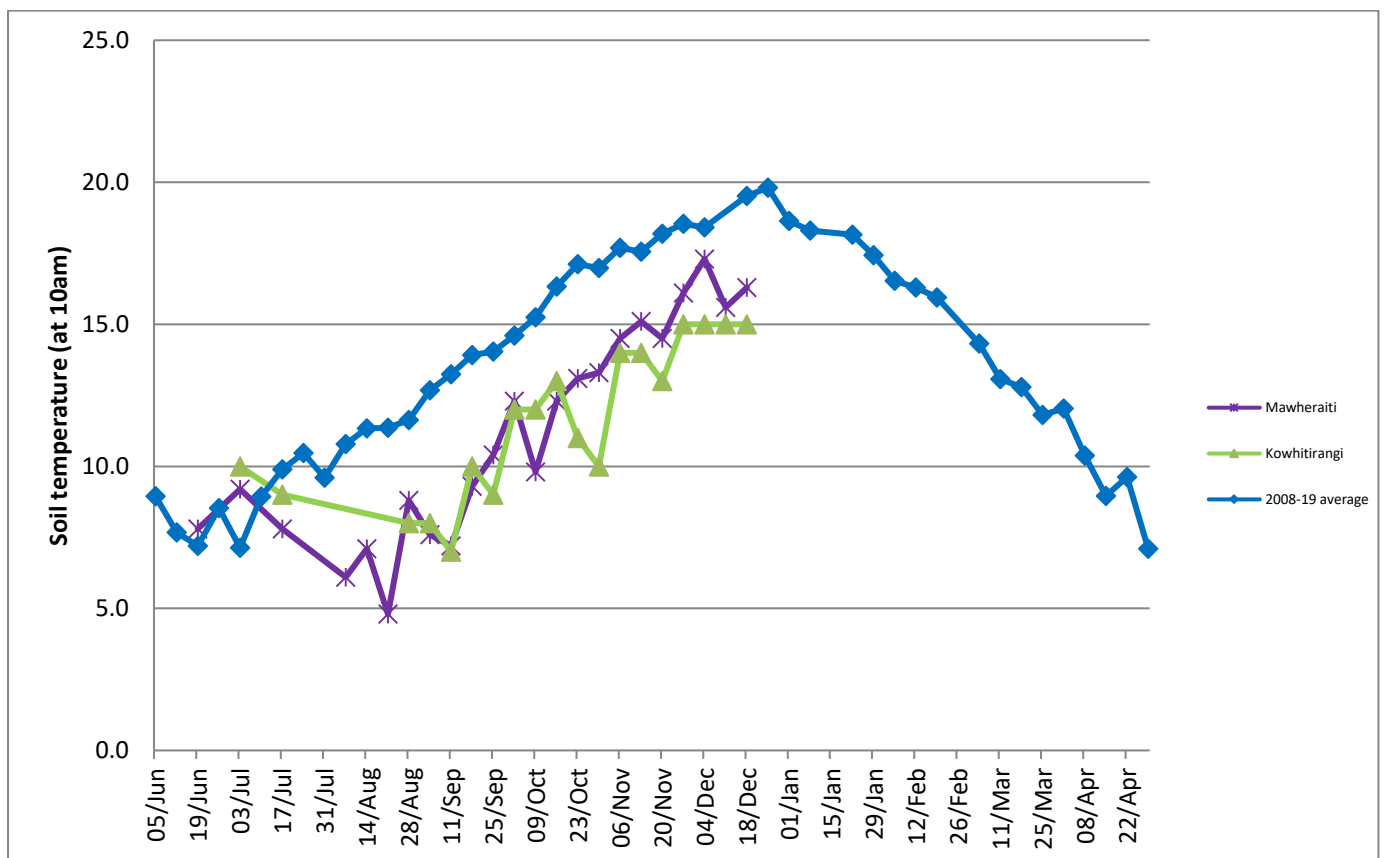
	Mawheraiti	Kowhitirangi
Average cover (kg DM/ha)	2151	1971
APC (3 July)	2157	2009
Rotation length (days)	25	27
Stocking rate	2.5	2.4
Percentage in milk	100	100
Milksolids kg/cow	1.65	1.85
Milksolids kg/ha	4.1	4.0
MS/cow (season to date)	195	223
MS/ha (season to date)	488	445
N (kg/ha) year to date	101	115
Current N application rate kg N/ha	24	-
	2 Dec	4 Dec
DM%	15.3	11.5
Pasture ME	11.6	12.4
Pasture NDF	44.0	44.3
Pasture CP	20.6	29.4
Target Intake (kg DM/cow/d)	19	18
Supplement (kg/cow/day)	0	2
Soil temperature (°C)	16.3	15
Growth Rate (kg DM/day)	46	20
Rainfall	7	120
Conditions for farmwalk	Fine, just. Farm very wet	Fine, beautiful warm day. Farm very wet

NB: pasture quality data are for 1 sample collected from each farm

Weekly Pasture Growth Rates



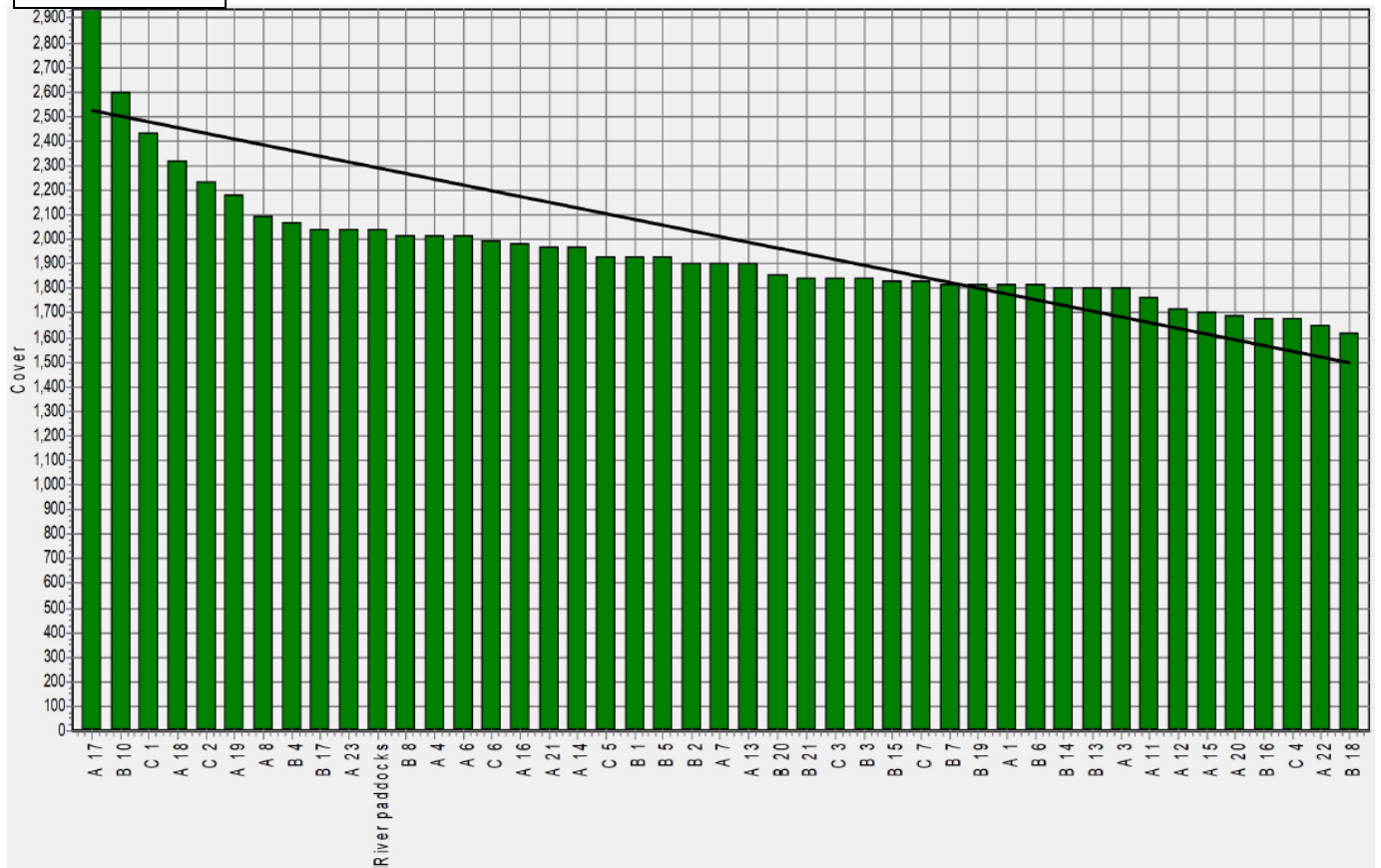
Weekly Soil Temperature



Mawheraiti



Kowhitirangi



Mawheraiti

Description	Date	RPM	% DM	% Prot	% Lipid	% ADF	% NDF	Sol Sugar	OMD %	MJME/kg
Paddock 2	15/07/19	15.4	12.7	30.2	3.8	19.2	38.4	8.5	88.8	13.0
Paddock 17	2/09/19	16.8	15.5	24.0	4.7	11.4	48.3	12.0	84.4	12.3
Paddock 2	4/11/19	13.0	15.4	16.3	3.4	22.1	46.6	16.5	83.2	12.2
Paddock 10	2/12/19	17.7	15.3	20.6	3.2	23.0	44.0	10.0	79.7	11.6

Kowhitirangi

Description	Date	RPM	% DM	% Prot	% Lipid	% ADF	% NDF	Sol Sugar	OMD %	MJME /kg
Paddock 5b	17/07/19	13.8	14.3	24.3	3.9	18.4	43.1	14.2	85.2	12.4
Paddock 3c	4/09/19	10.8	17.3	24.0	3.5	15.7	36.1	21.1	>85	12.6
Paddock 9b	9/10/19	8.9	15.0	25.6	3.3	22.3	45.2	10.5	83.3	12.2
Paddock 15a	6/11/19	9.0	13.5	23.7	3.8	20.4	43.8	12.2	>85	12.5
Paddock 13a	4/12/19	13.3	11.5	29.4	3.2	24.5	43.3	6.4	85.0	12.4