

# Westland Monitor Farm Project

Weekly Update as at week ending Wednesday 18<sup>th</sup> March 2020

## CO Comment

In my travels along the West Coast this week I have spied a lot of supplements being made in South Westland. This is encouraging to see as it has been a tough year particularly for those farmers and it will help boost feed supply into and over winter.

You may have seen a few events being postponed in the region due to Covid-19 restrictions. DairyNZ is no different and there will be no further events undertaken in the region until further notice.

I am still available by phone and email so please don't hesitate to get in touch if there is something urgent you need to discuss. We are looking at other ways of maintaining our connections with farmers during this time and if you have any ideas around how that might work best for you, let us know.

Please do look after yourselves out there.

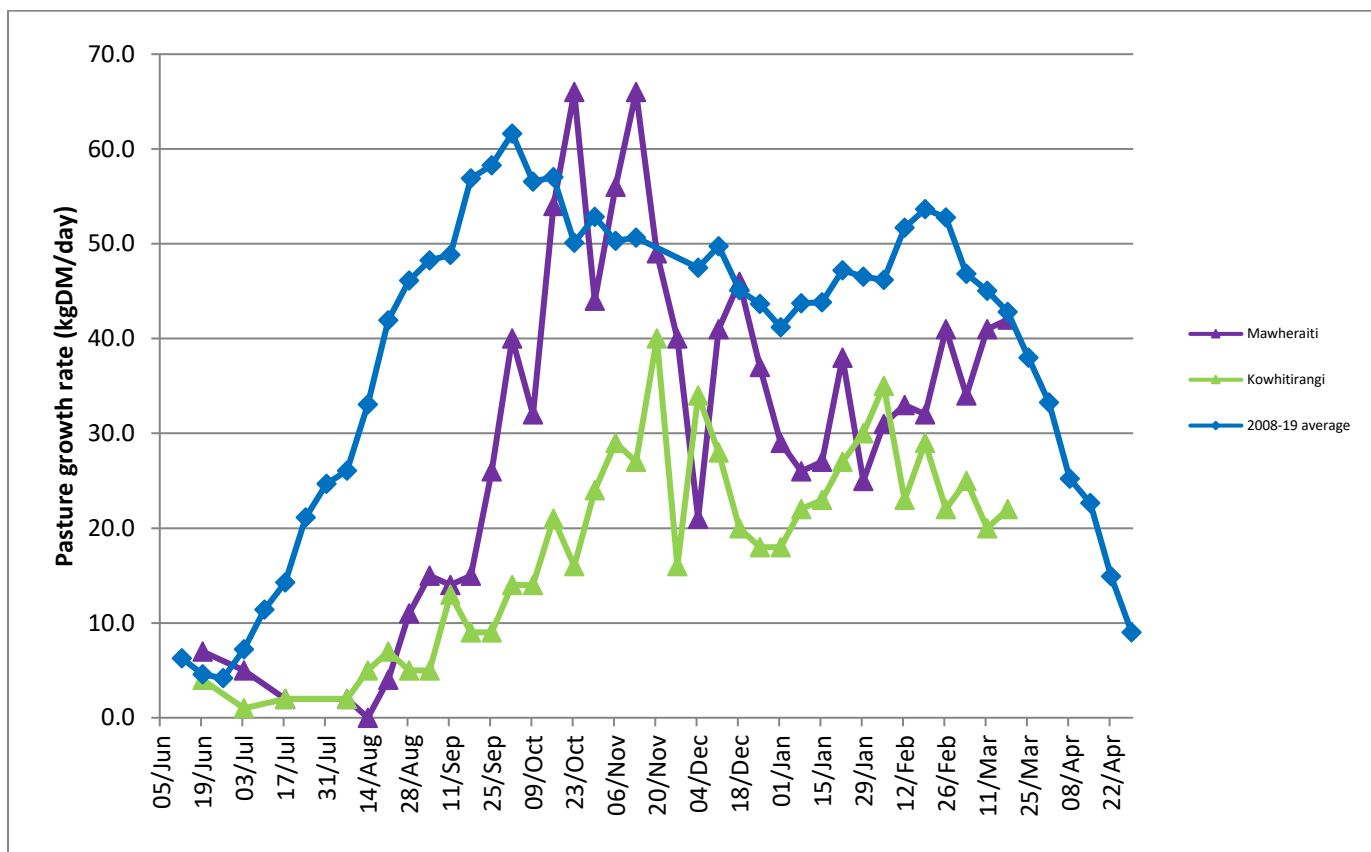
On Tuesday we had the West Coast/Top of the South Dairy Industry Awards dinner. A great evening celebrating the regions talented up and comers. I was heartened to see many locals receiving prizes and that the sector is in good hands with these guys coming through. To see the full results head to <https://www.dairyindustryawards.co.nz/results-2/regional-results/west-coasttop-of-the-south-2/>

## Farm Summary

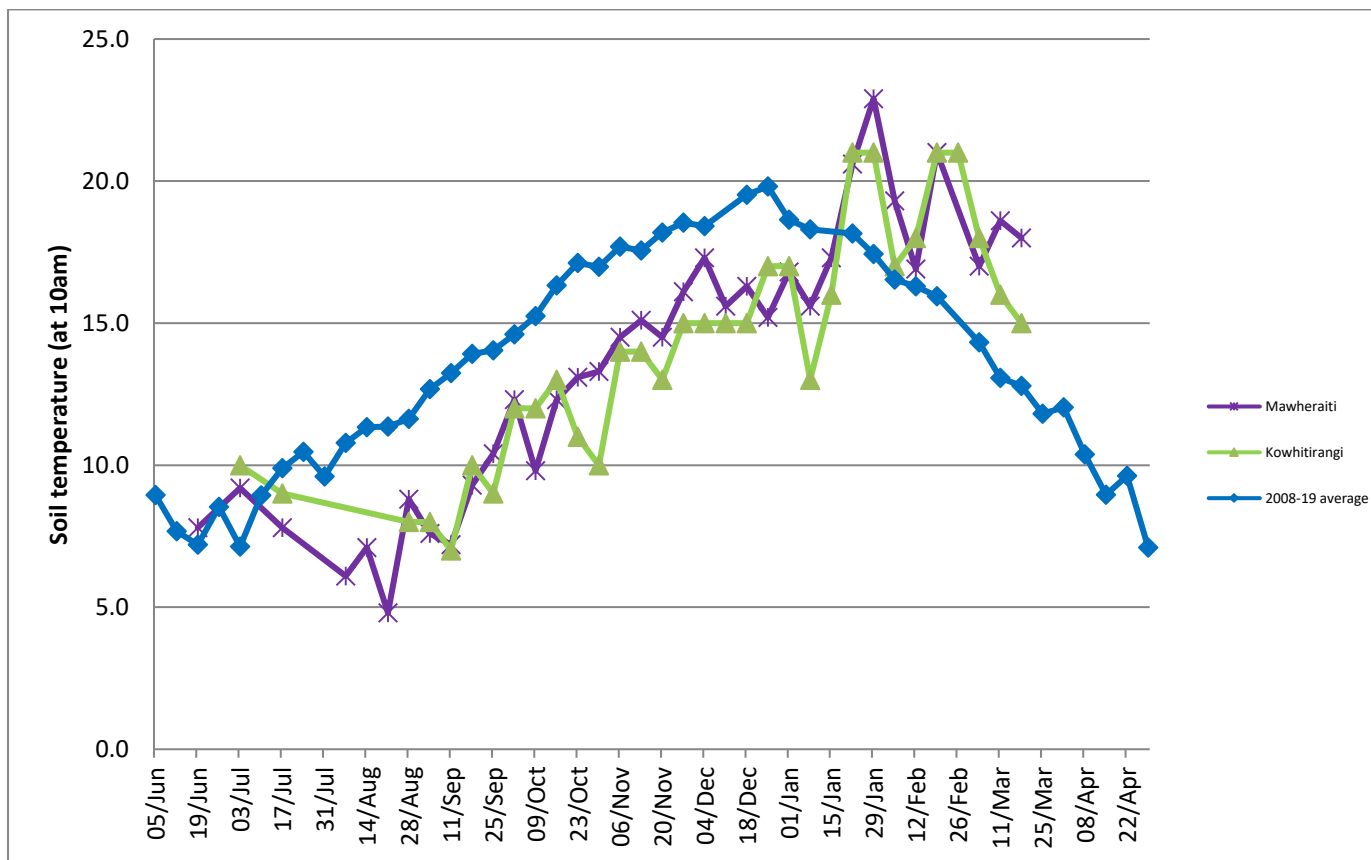
	Mawheraiti	Kowhitirangi
Average cover (kg DM/ha)	2171	1999
APC (11 March)	2160	1982
Rotation length (days)	28	28
Stocking rate	2.3	2.3
Percentage in milk	100	100
Milksolids kg/cow	1.53	1.49
Milksolids kg/ha	3.6	3.1
MS/cow (season to date)	331	371
MS/ha (season to date)	829	740
N (kg/ha) year to date	200	207
Current N application rate kg N/ha	25	16
	2 Mar	4 Mar
DM%	11.4	11.6
Pasture ME	11.5	11.9
Pasture NDF	48.4	45.0
Pasture CP	28.5	29.5
Target Intake (kg DM/cow/d)	17	18
Supplement (kg/cow/day)	0	2
Soil temperature (°C)	18	15
Growth Rate (kg DM/day)	42	22
Rainfall	3	8
Conditions for farmwalk	Fine, just	Fine but overcast, rain close

NB: pasture quality data are for 1 sample collected from each farm

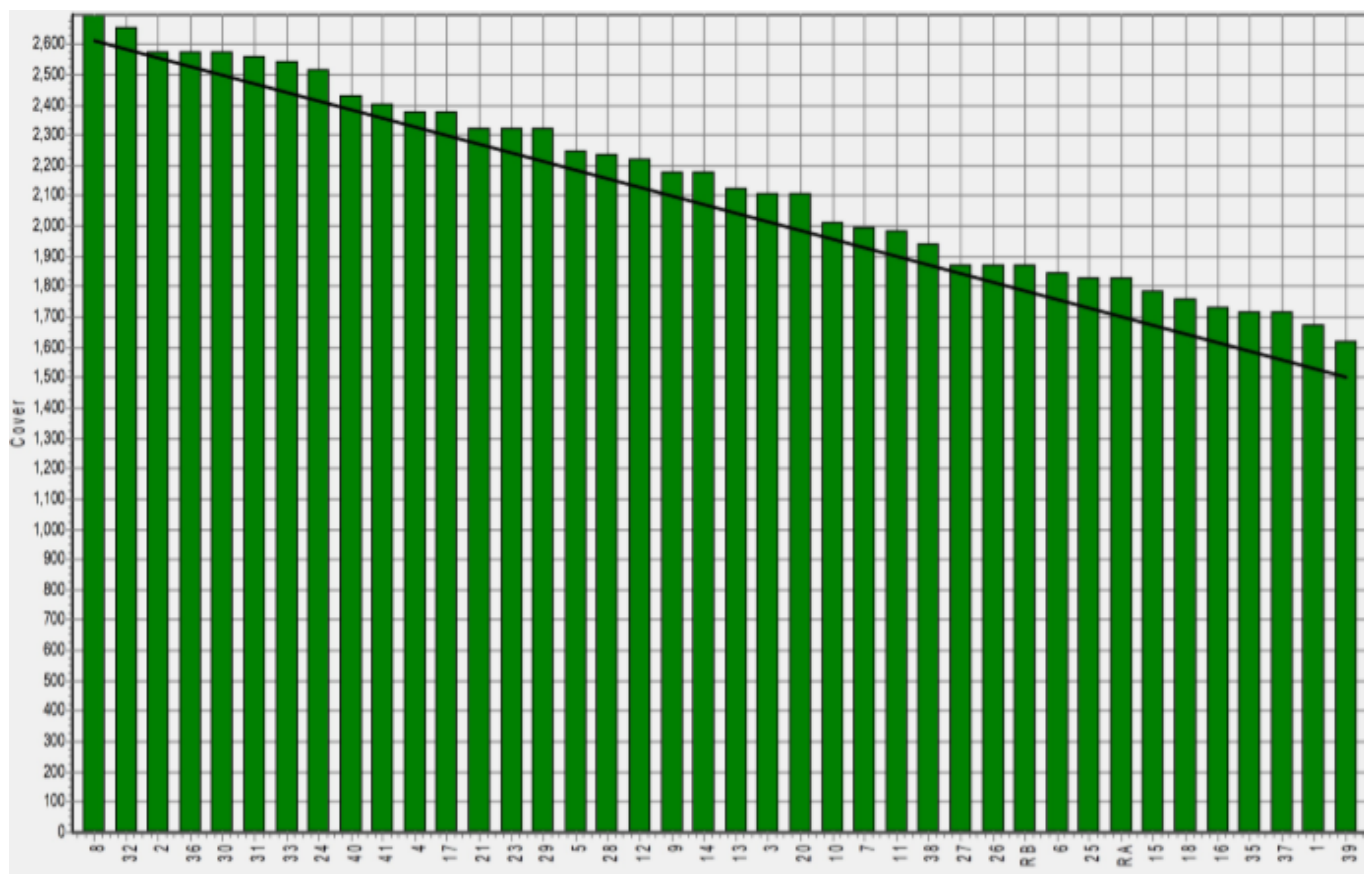
## Weekly Pasture Growth Rates



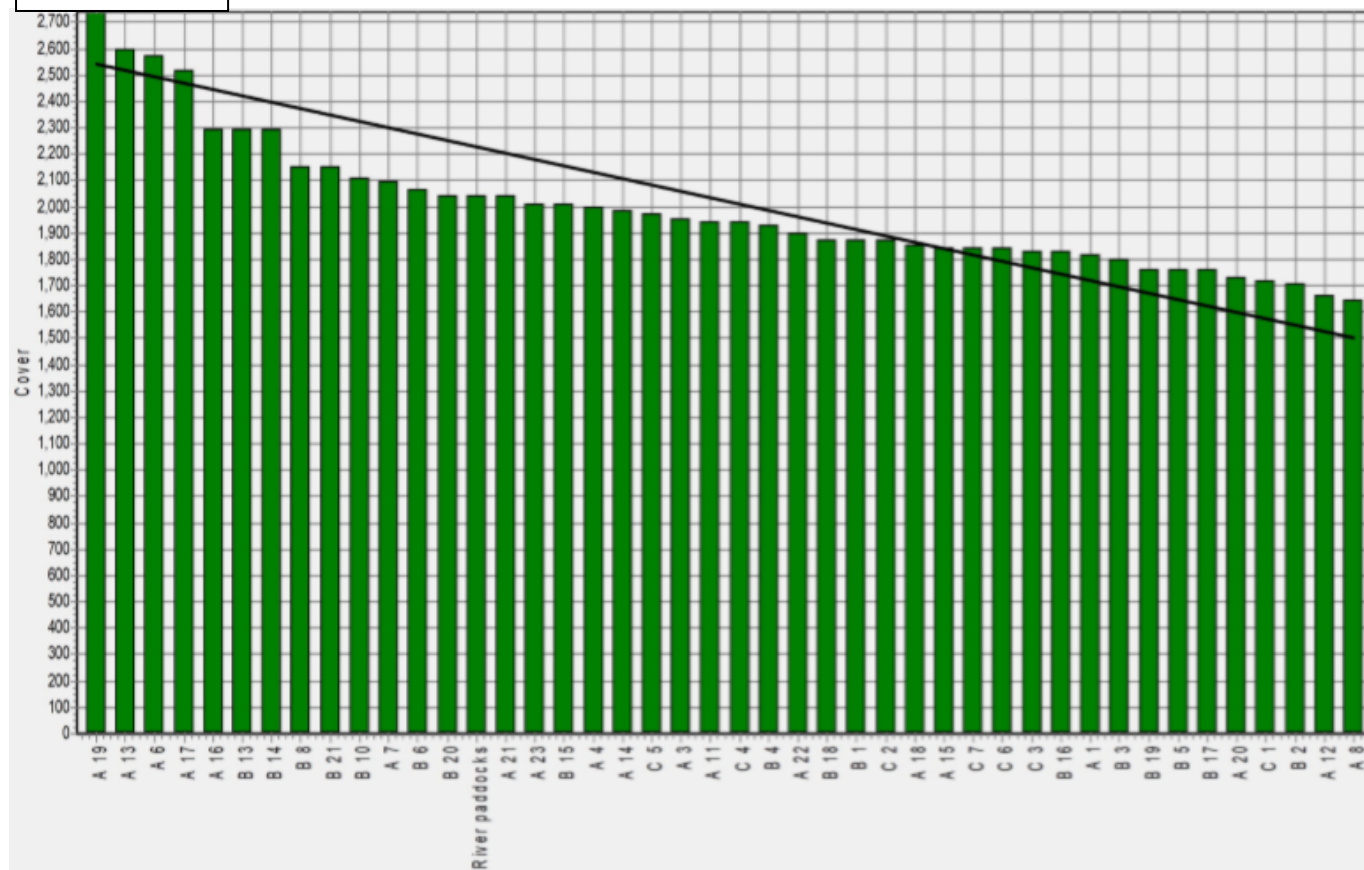
## Weekly Soil Temperature



### Mawheraiti



### Kowhitirangi



# Mawheraiti

Description	Date	RPM	% DM	% Prot	% Lipid	% ADF	% NDF	Sol Sugar	OMD %	MJME/kg
Paddock 2	15/07/19	15.4	12.7	30.2	3.8	19.2	38.4	8.5	88.8	13.0
Paddock 17	2/09/19	16.8	15.5	24.0	4.7	11.4	48.3	12.0	84.4	12.3
Paddock 2	4/11/19	13.0	15.4	16.3	3.4	22.1	46.6	16.5	83.2	12.2
Paddock 10	2/12/19	17.7	15.3	20.6	3.2	23.0	44.0	10.0	79.7	11.6
Paddock 1	13/1/20	14.4	14.7	24.5	3.5	23.3	46.9	11.7	81.3	11.9
Paddock 24	3/2/20	10.8	13.2	25.0	3.4	25.3	47.1	5.7	79.8	11.6
Paddock 21	2/3/20	15.8	11.4	28.5	3.4	25.7	48.4	5.9	78.6	11.5

Kowhitirangi

Description	Date	RPM	% DM	% Prot	% Lipid	% ADF	% NDF	Sol Sugar	OMD %	MJME /kg
Paddock 5b	17/07/19	13.8	14.3	24.3	3.9	18.4	43.1	14.2	85.2	12.4
Paddock 3c	4/09/19	10.8	17.3	24.0	3.5	15.7	36.1	21.1	>85	12.6
Paddock 9b	9/10/19	8.9	15.0	25.6	3.3	22.3	45.2	10.5	83.3	12.2
Paddock 15a	6/11/19	9.0	13.5	23.7	3.8	20.4	43.8	12.2	>85	12.5
Paddock 13a	4/12/19	13.3	11.5	29.4	3.2	24.5	43.3	6.4	85.0	12.4
Paddock 13b	15/1/20	10.0	19.5	18.8	3.4	24.1	44.7	13.8	76.8	11.2
Paddock 4a	5/2/20	13.8	9.9	24.8	3.3	30.5*	53.1	2.1	76.0	11.1
Paddock 14a	4/3/20	16.0	11.6	29.5	3.3	22.9	45.0	6.4	81.7	11.9

\* Test analytes which have occurred as outliers on the NIRS calibration are indicated by \* and should be treated as an approximation only.