

Westland Monitor Farm Project

Weekly Update as at week ending Wednesday 18th September 2019

CO Comment

Last week we had the community meeting to discuss the Essential Freshwater Package. The meeting in Greymouth was well attended by representatives from all primary industry sectors and within the community.

The Package proposes some major changes to the management of New Zealand's freshwaters. The proposals have two main objectives:

- to stop further degradation of waterways and start making immediate improvements so that water quality is improving within five years
- to reverse past damage and bring waterways and ecosystems to a healthy state within a generation.

For dairy, the aspects of the proposal likely to have the largest impact include:

- changes to the way in which councils implement their management plans to simplify and speed up the process
- an increased focus on ecosystem health outcomes, including new nutrient limits, interim controls on intensification, and new practice standards for agriculture. This includes new regulations for stock exclusion, winter grazing, limiting nitrogen use, stock holding areas and feedlots, and a requirement for farmers to have a Farm Environment Plan.

We encourage all farmers to make a submission on the proposed Essential Freshwater Package. In your submission, you can include comments on what you agree with and what you disagree with. If you disagree with a proposal, do you have ideas for an alternative which could be effective? You can also include comments about what you are already doing on your farm to improve water quality. DairyNZ will develop guidance to help inform your answers based on the analysis that is currently underway.

Submissions close on October 31 and can be made at <https://www.dairynz.co.nz/environment/in-your-region/essential-freshwater-package/>

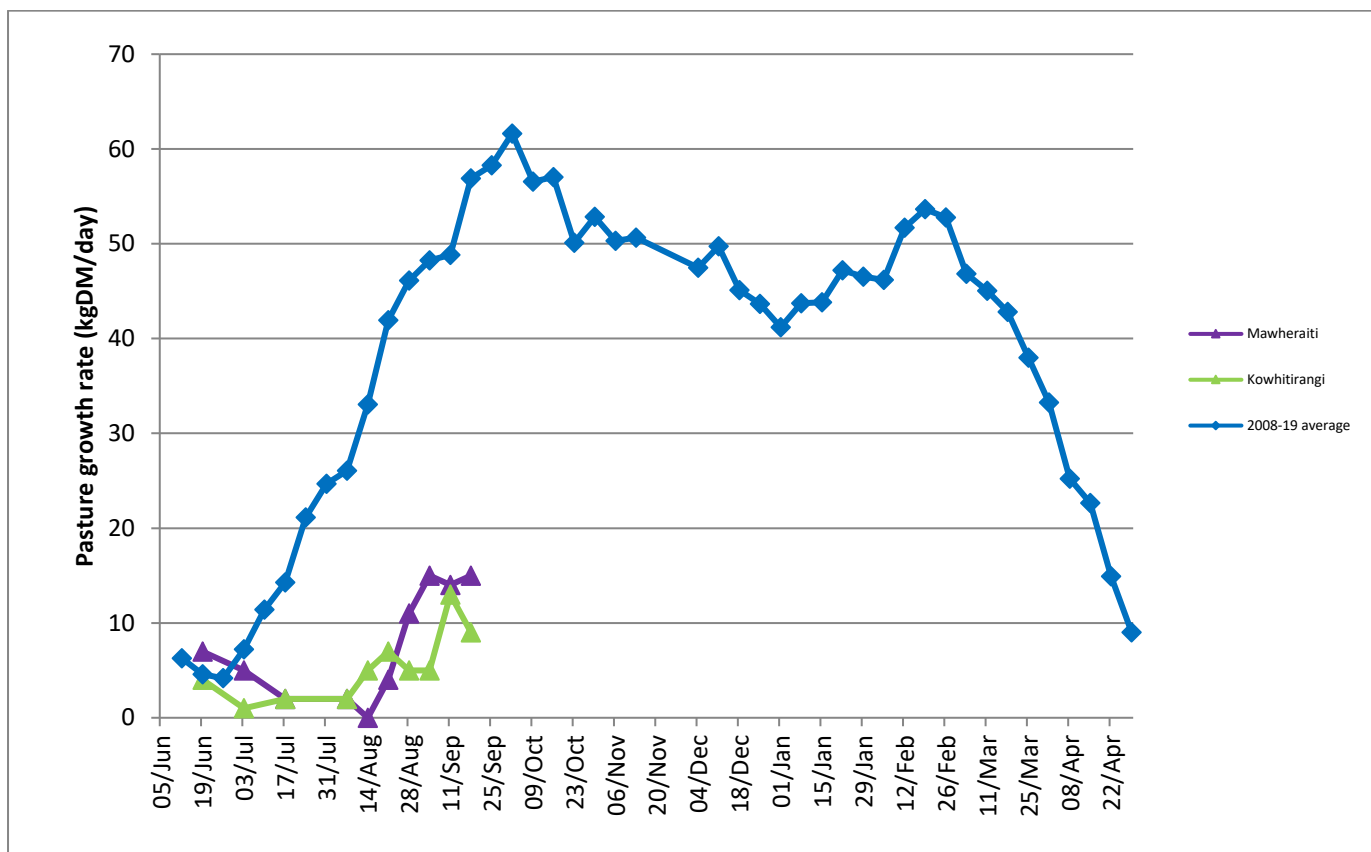
If you would like to discuss the process around submissions or any concerns about what this may mean for your business feel free to contact DairyNZ at <https://www.dairynz.co.nz/contact-us/regional-teams/?region=6803>

Farm Summary

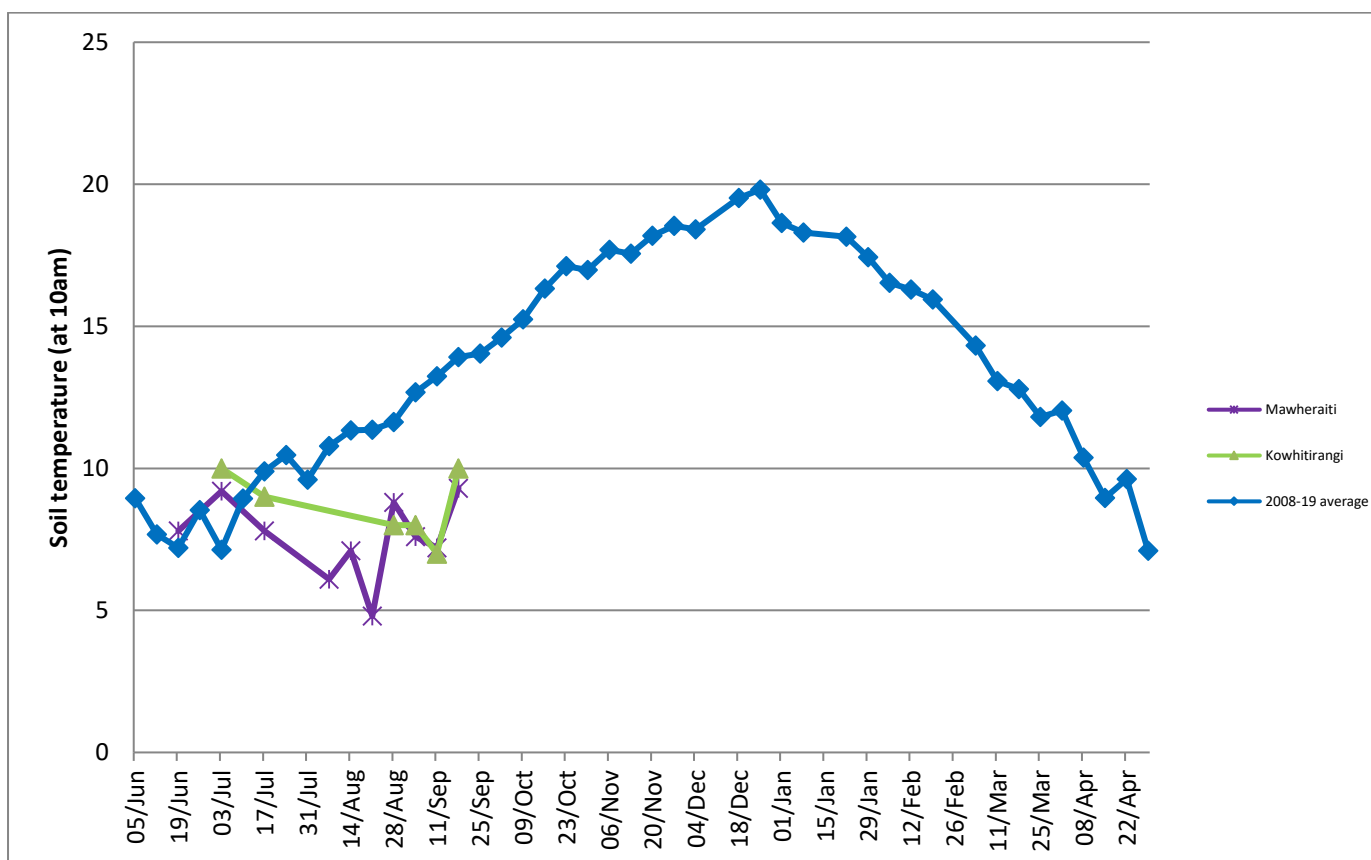
	Mawheraiti	Kowhitirangi
Average cover (kg DM/ha)	2213	1838
APC (3 July)	2314	1856
Rotation length (days)	52	31
Stocking rate		
Percentage in milk	87	95
Milksolids kg/cow	1.97	2.08
Milksolids kg/ha	3.9	4.0
MS/cow (season to date)	25	41
MS/ha (season to date)	61	82
N (kg/ha) year to date	37	44
Current N application rate kg N/ha	-	-
	2 Sept	4 Sept
DM%	15.5	17.3
Pasture ME	12.3	12.6
Pasture NDF	48.3	36.1
Pasture CP	24.0	24.0
Target Intake (kg DM/cow/d)	18	18
Supplement (kg/cow/day)	2.4	1.8
Soil temperature (°C)	9.3	10
Growth Rate (kg DM/day)	15	9
Rainfall	60	67
Conditions for farmwalk	Raining	Frost in morning, stunning day

NB: pasture quality data are for 1 sample collected from each farm

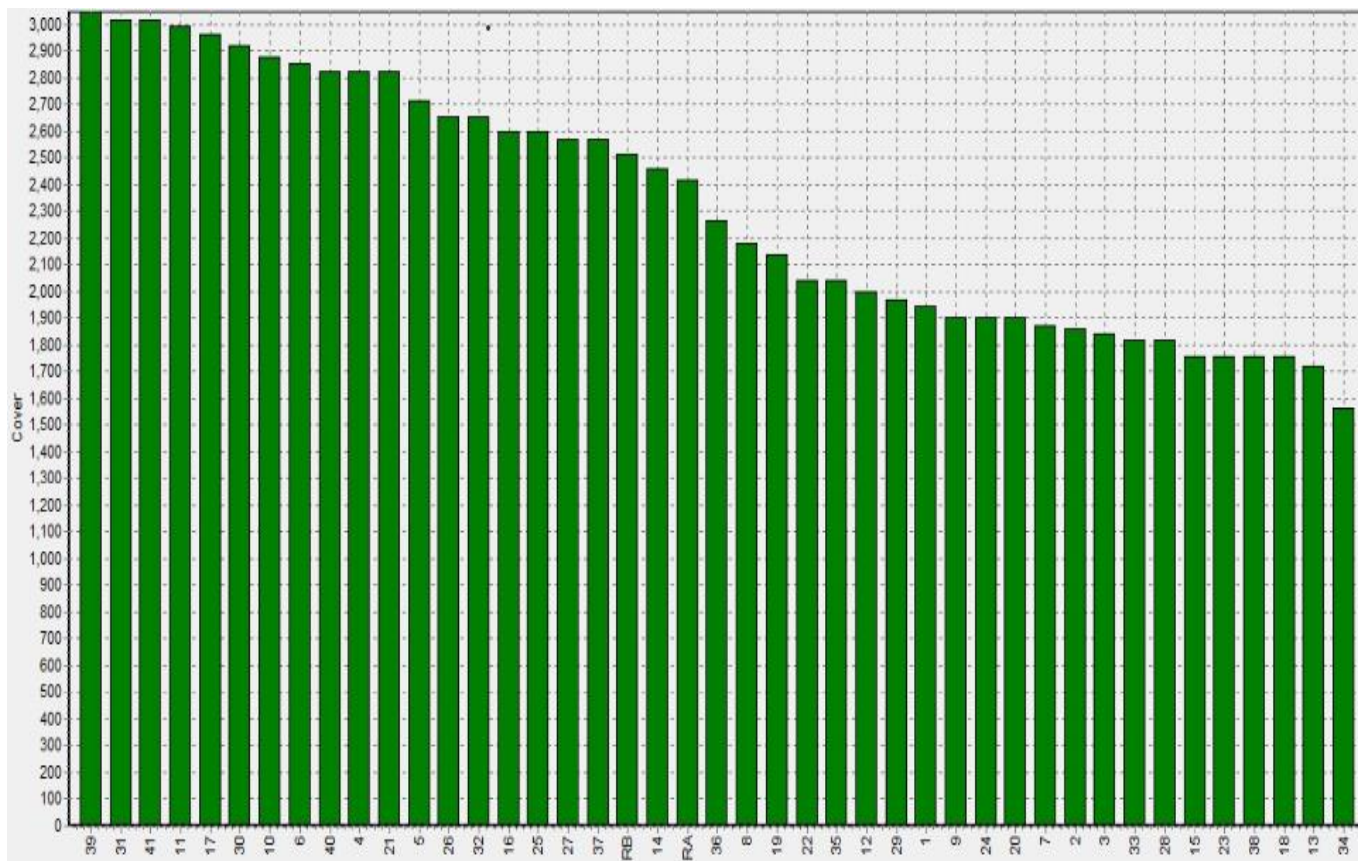
Weekly Pasture Growth Rates



Weekly Soil Temperature



Mawheraiti



Kowhitirangi

