

Westland Monitor Farm Project

Weekly Update as at week ending Wednesday 19th February 2020

CO Comment

Most people will have heard of the Spring Rotation Planner which is a tool used to create a grazing plan through spring to achieve desired rotation length and identify requirements for supplements.

DairyNZ has an Autumn Rotation Planner which essentially does the same thing but is used instead to set yourself up going into winter.

The Autumn Rotation Planner can help you plan the required change in rotation (area allocation per day) during autumn to meet rotation length and pasture cover targets for the start of winter (June 1).

Starting the winter with adequate feed cover and rotation length is vital, as there are very few opportunities during winter and early spring for any shortfalls to be filled by pasture growth being greater than feed demand.

The Autumn Rotation Plan maps out the rate of change in area allocation required to meet rotation length targets between the start and end of autumn. It can also be used to guide and monitor average pasture cover against target over the same period.

The Autumn Rotation Plan should be used during March until May. It can be started anytime from March 1 to April 30 and the end point is always May 31. While its mainly used to keep pasture cover and rotation length above minimum levels, it's also important that there is not too much cover on the farm at the start of winter.

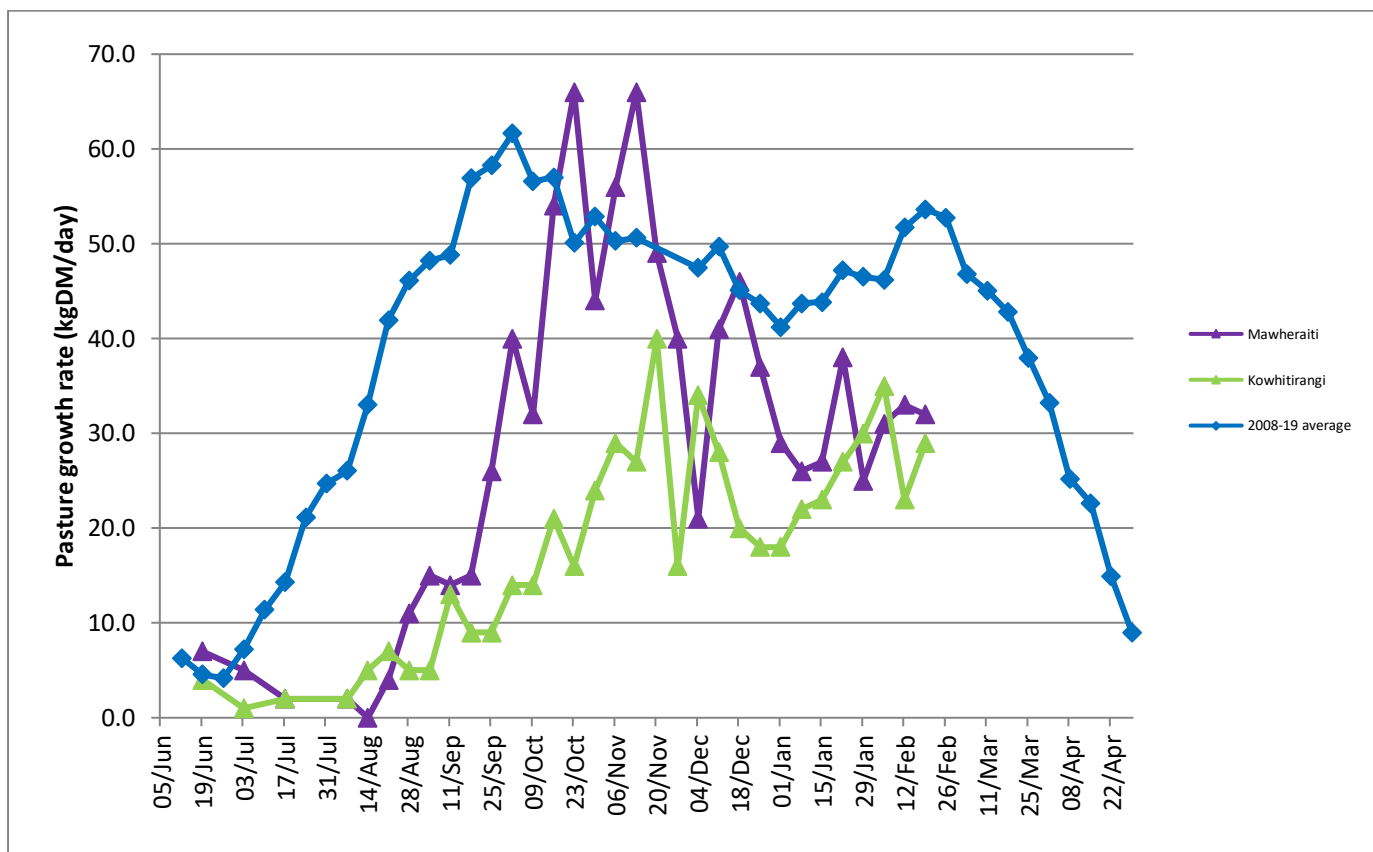
To download the Autumn rotation plan go to <https://www.dairynz.co.nz/feed/pasture-management/feed-wedges-and-rotation-planners/autumn-rotation-planner/>

Farm Summary

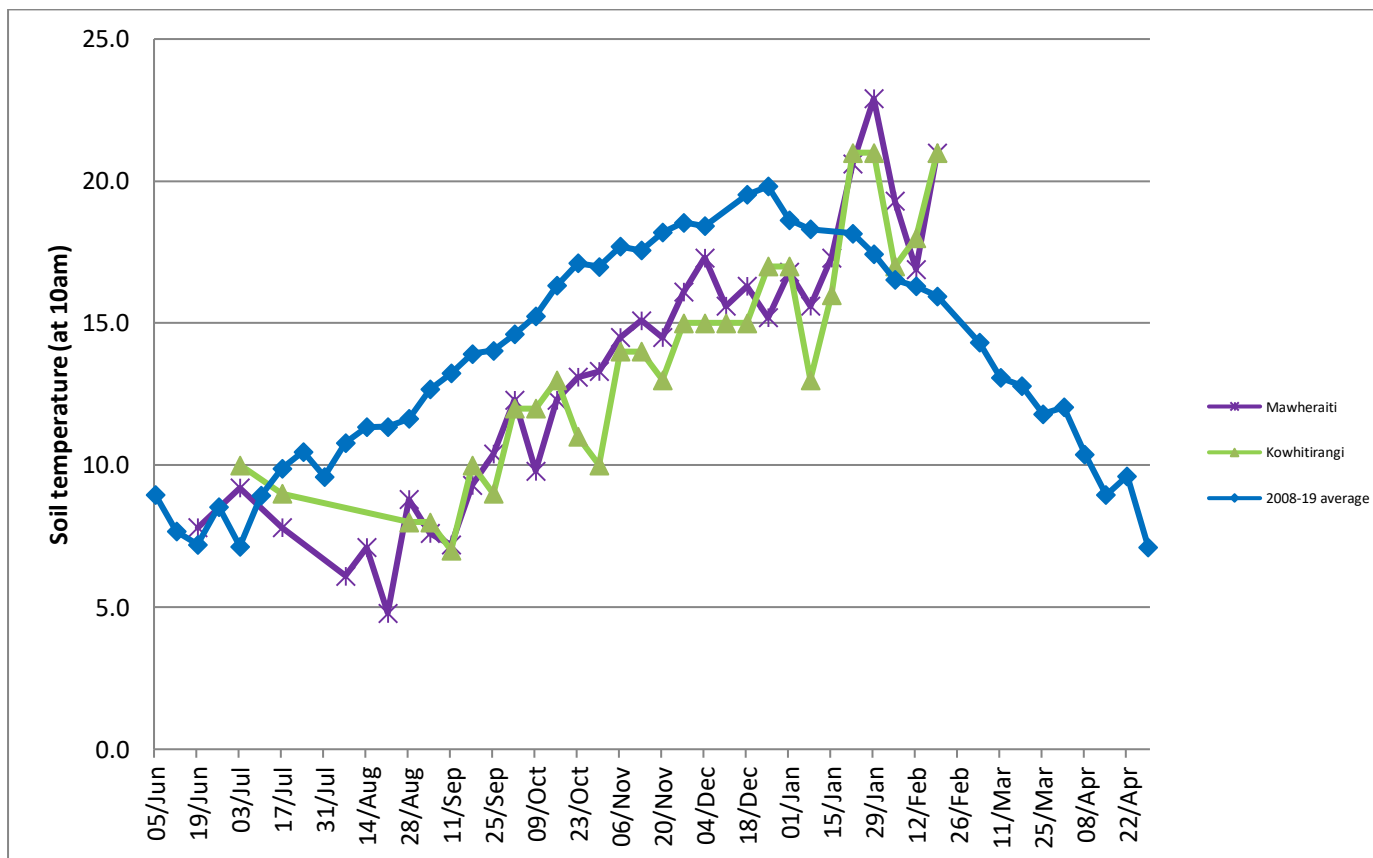
	Mawheraiti	Kowhitirangi
Average cover (kg DM/ha)	2111	2041
APC (12 February)	2101	2003
Rotation length (days)	28	27
Stocking rate	2.4	2.3
Percentage in milk	100	100
Milksolids kg/cow	1.34	1.64
Milksolids kg/ha	3.2	3.4
MS/cow (season to date)	290	331
MS/ha (season to date)	727	659
N (kg/ha) year to date	166	175
Current N application rate kg N/ha	33	-
	3 Feb	5 Feb
DM%	13.2	9.9
Pasture ME	11.6	11.1
Pasture NDF	47.1	53.1
Pasture CP	25.0	24.8
Target Intake (kg DM/cow/d)	17	18
Supplement (kg/cow/day)	0	1.5
Soil temperature (°C)	21	21
Growth Rate (kg DM/day)	32	29
Rainfall	4	61
Conditions for farmwalk	Rain and wind	Warm and raining

NB: pasture quality data are for 1 sample collected from each farm

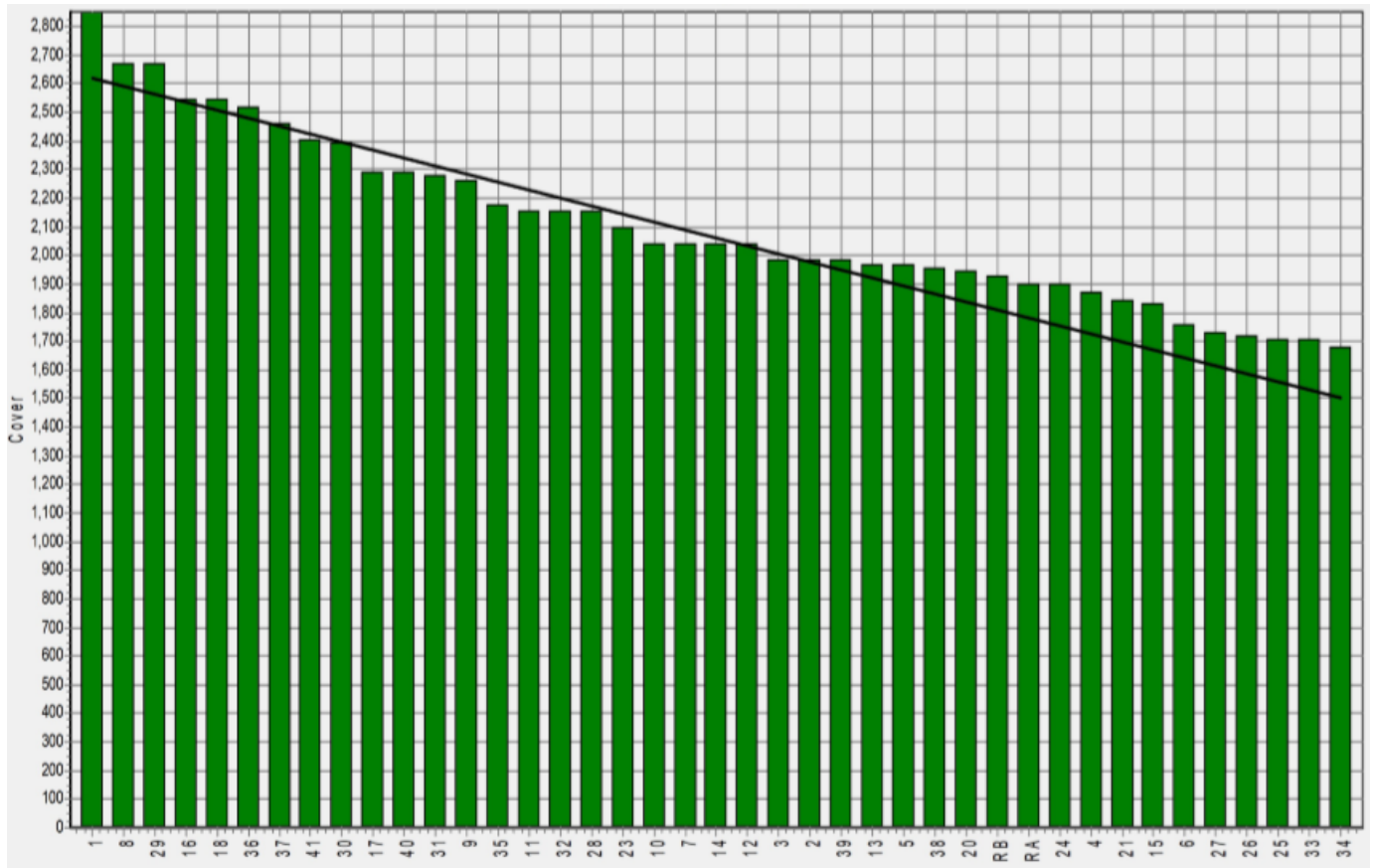
Weekly Pasture Growth Rates



Weekly Soil Temperature



Mawheraiti



Kowhitirangi



