

# Westland Monitor Farm Project

**Weekly Update** as at week ending Wednesday 2<sup>nd</sup> October 2019

## CO Comment

Temperatures for spring still appear to be sluggish and cooler than usual for the Coast, resulting in stunted grass growth rates and cornering farmers with a pinch now or just ahead. Consider filling the potential hole in the feed wedge by feeding some form of supplement to ensure round length is held for a little while longer until pasture growth rates come away.

There has been a lot of rain up and down the region in the past week saturating soils, which has seemingly stalled some farmers ability to resow winter crop paddocks as yet.

This rain has also made second round of grazing challenging with many having to go back into paddocks with lower than ideal pasture covers. This has also increased damage to soil and pasture which may need some remedial action in the coming months.

Reminder that we encourage all farmers to make a submission on the proposed Essential Freshwater Package.

In your submission, you can include comments on what you agree with and what you disagree with. If you disagree with a proposal, do you have ideas for an alternative which could be effective? You can also include comments about what you are already doing on your farm to improve water quality. Details of what is in DairyNZ's submission should be available from October 17<sup>th</sup>.

Submissions close on October 31 and can be made at <https://www.dairynz.co.nz/environment/in-your-region/essential-freshwater-package/>

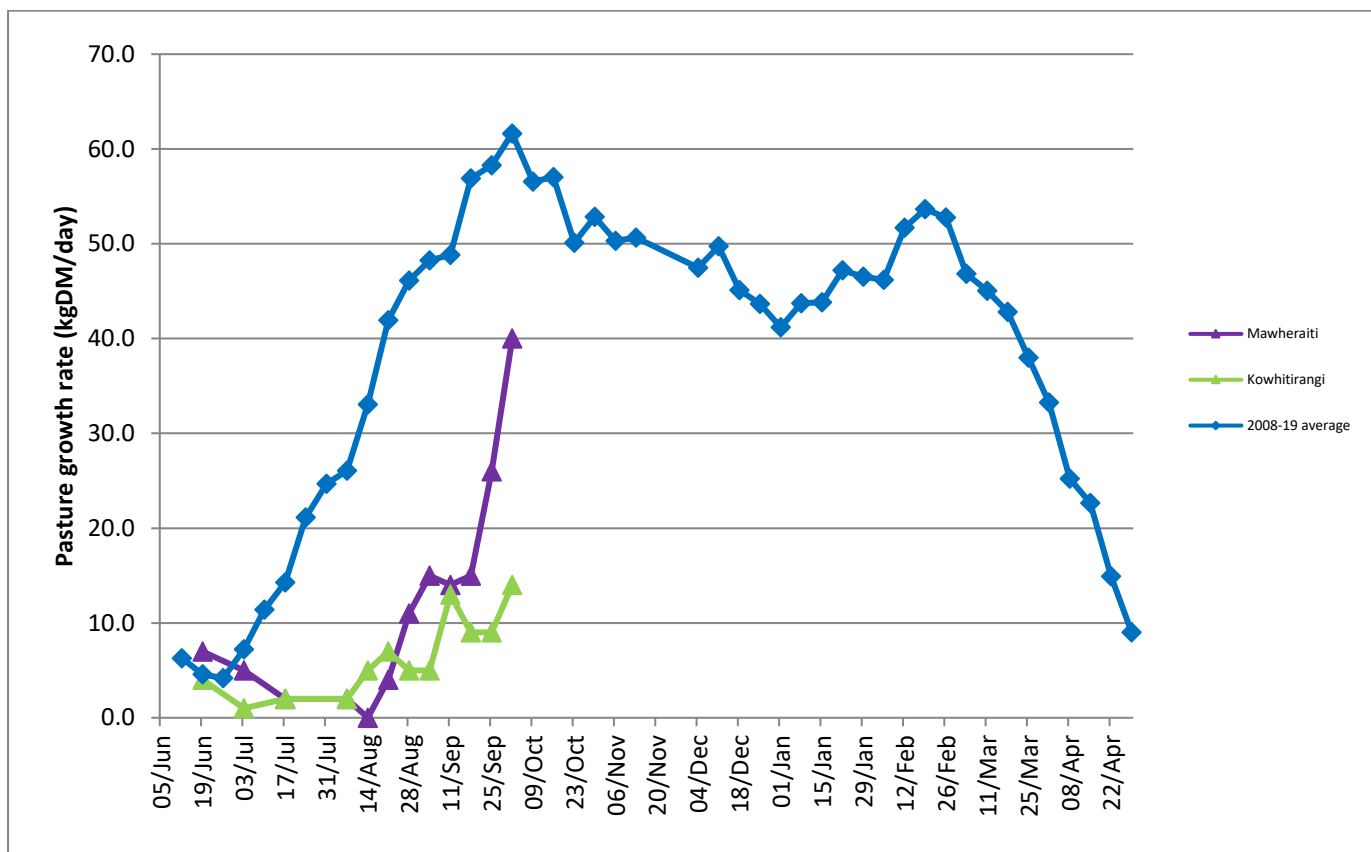
If you would like to discuss the process around submissions or any concerns about what this may mean for your business feel free to contact DairyNZ at <https://www.dairynz.co.nz/contact-us/regional-teams/?region=6803>

## Farm Summary

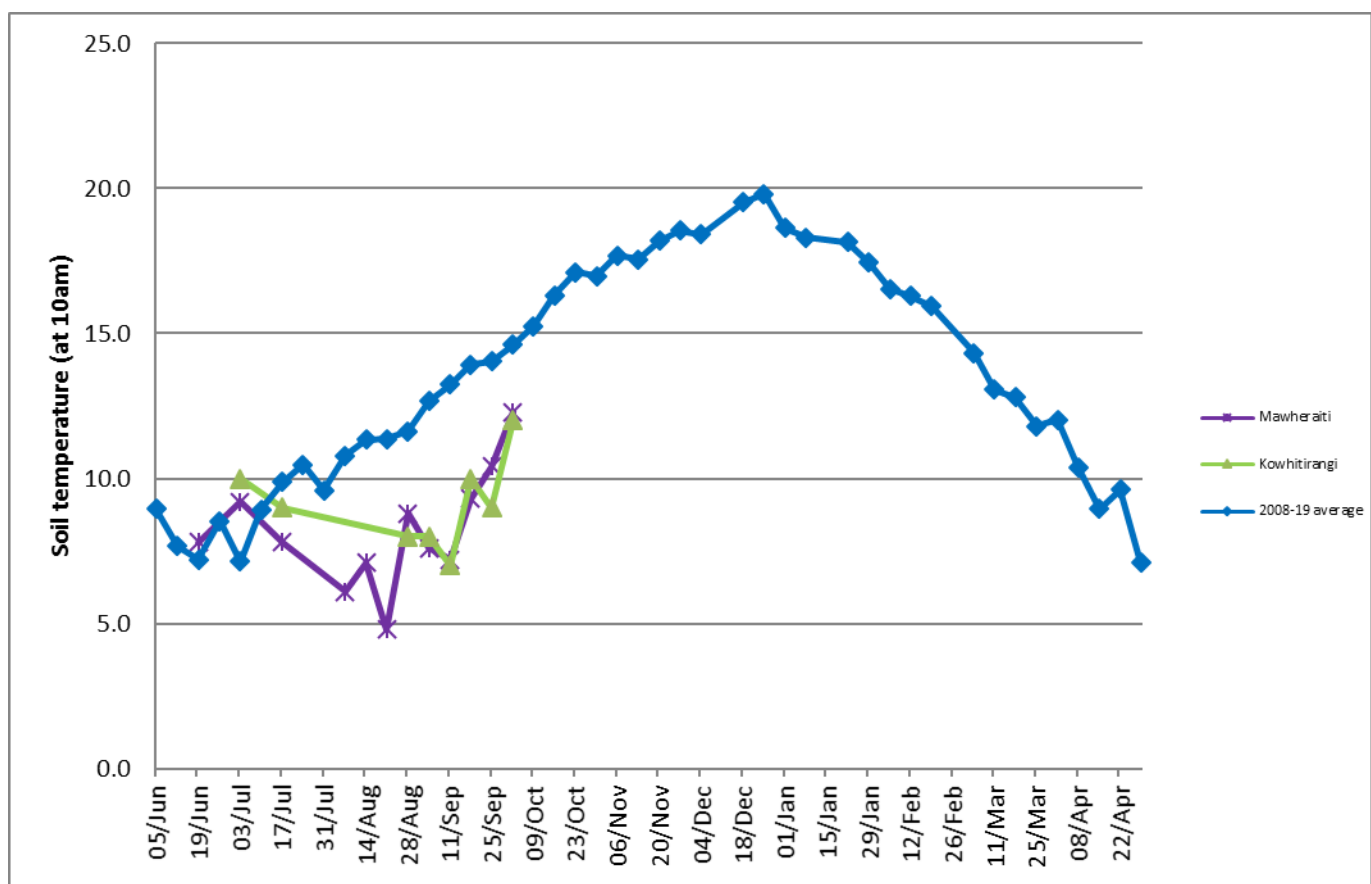
	Mawheraiti	Kowhitirangi
Average cover (kg DM/ha)	2180	1825
APC (3 July)	2238	1819
Rotation length (days)	31	24
Stocking rate	2.2	2.1
Percentage in milk	95	98
Milksolids kg/cow	2.04	2.04
Milksolids kg/ha	4.7	4.1
MS/cow (season to date)	48	69
MS/ha (season to date)	121	138
N (kg/ha) year to date	37	44
Current N application rate kg N/ha	-	-
	2 Sept	4 Sept
DM%	15.5	17.3
Pasture ME	12.3	12.6
Pasture NDF	48.3	36.1
Pasture CP	24.0	24.0
Target Intake (kg DM/cow/d)	18	19
Supplement (kg/cow/day)	0	3.5
Soil temperature (°C)	12.3	12
Growth Rate (kg DM/day)	40	14
Rainfall	96	75
Conditions for farmwalk	Raining, cold	Heavy rain, cold wind

NB: pasture quality data are for 1 sample collected from each farm

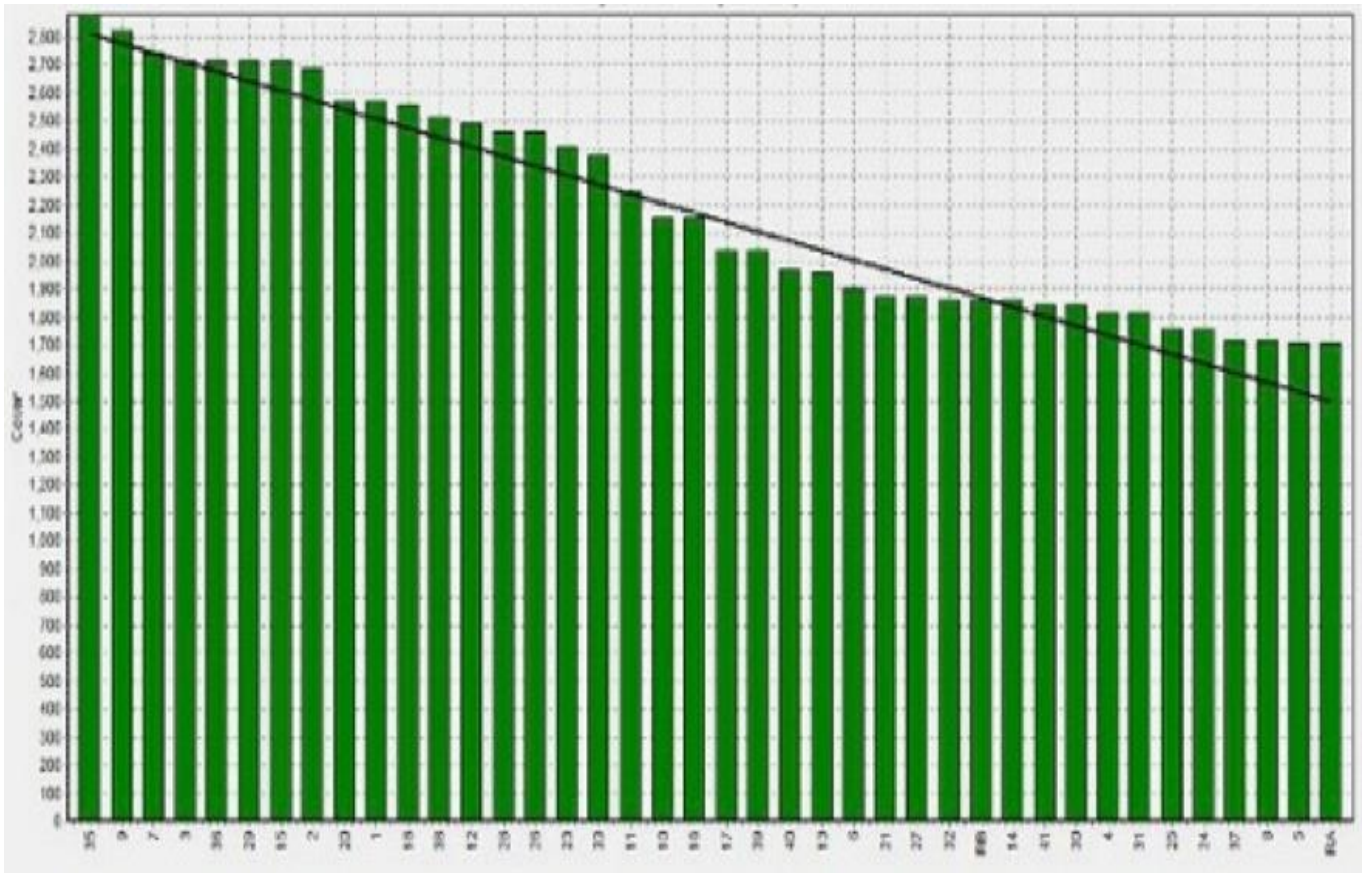
## Weekly Pasture Growth Rates



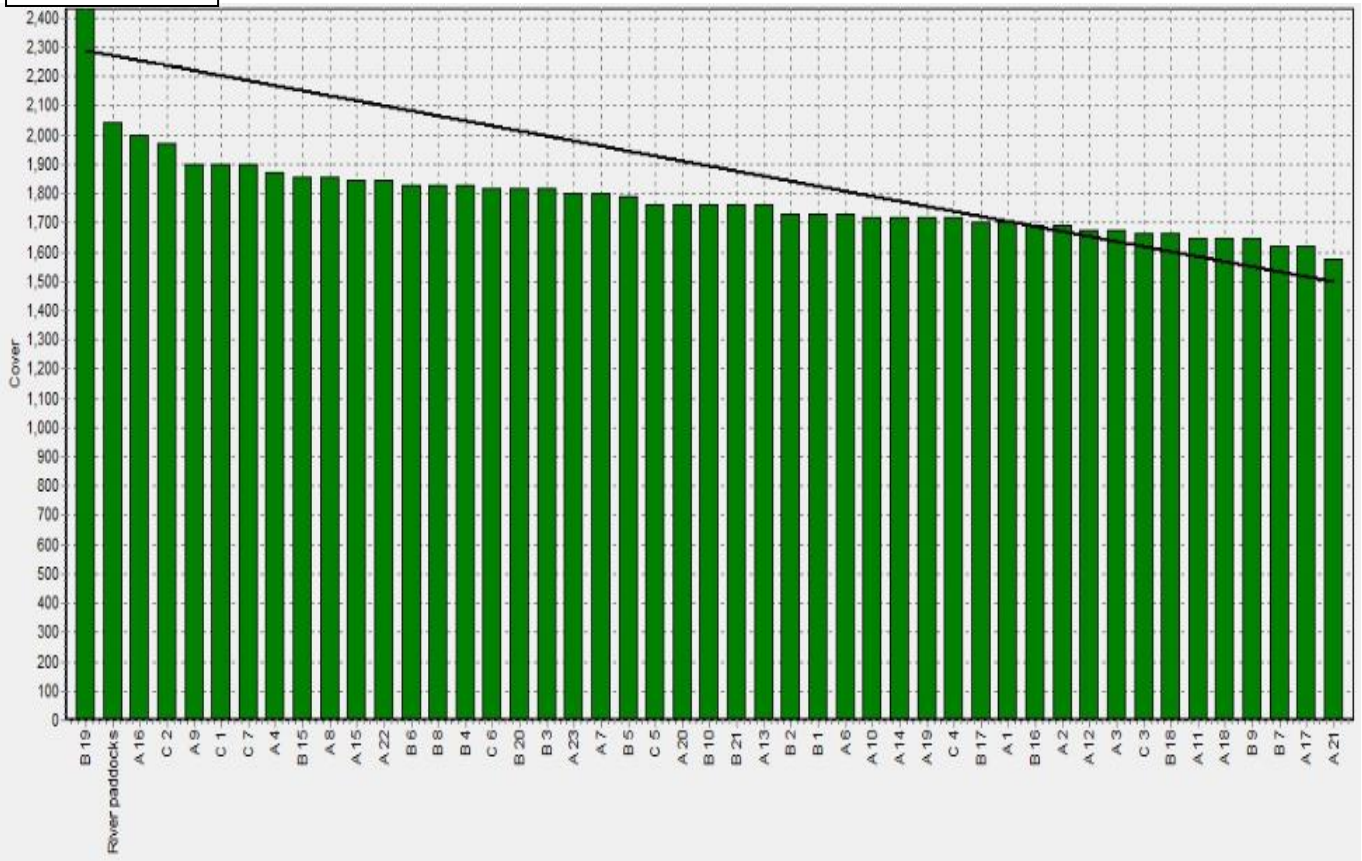
## Weekly Soil Temperature



## Mawheraiti



## Kowhitirangi



Mawheraiti

Description	Date	RPM	% DM	% Prot	% Lipid	% ADF	% NDF	Sol Sugar	OMD %	MJME/kg
Paddock 2	15/07/19	15.4	12.7	30.2	3.8	19.2	38.4	8.5	88.8	13.0
Paddock 17	2/09/19	16.8	15.5	24.0	4.7	11.4	48.3	12.0	84.4	12.3

Kowhitirangi

Description	Date	RPM	% DM	% Prot	% Lipid	% ADF	% NDF	Sol Sugar	OMD %	MJME /kg
Paddock 5b	17/07/19	13.8	14.3	24.3	3.9	18.4	43.1	14.2	85.2	12.4
Paddock 3c	4/09/19	10.8	17.3	24.0	3.5	15.7	36.1	21.1	>85	12.6