

Westland Monitor Farm Project

Weekly Update as at week ending Wednesday 20th November 2019

CO Comment

After some better growing conditions over the last week, pasture growth has been exceeding stock demand and some useful feed surpluses have developed. Maintaining pasture quality will need to be the prime focus for the next while.

Daily milksolids production has been holding up reasonably well, with cows still able to be adequately fed on good quality pasture.

As pasture growth rates climb to exceed stock demand, the tendency will be for residual grazing height to lift, which will impact on pasture quality in the next grazing round. Maintaining pasture quality by regular pasture monitoring and achieving a consistent and even residual will be critical if current cow production levels are to be maintained. Identify lower performing paddocks, or those that need some other improvement, and consider them for renovation now. Dropping them out of the grazing round now will assist in managing a potential feed surplus.

Monitoring pasture growth is one thing, but it is also important to keep an eye on budget vs actual spend and perhaps consider doing some benchmarking of your figures too.

Remember next year the West Coast is getting its own Mark and Measure course. Registrations open on 1 Dec with very limited spaces. For more information visit

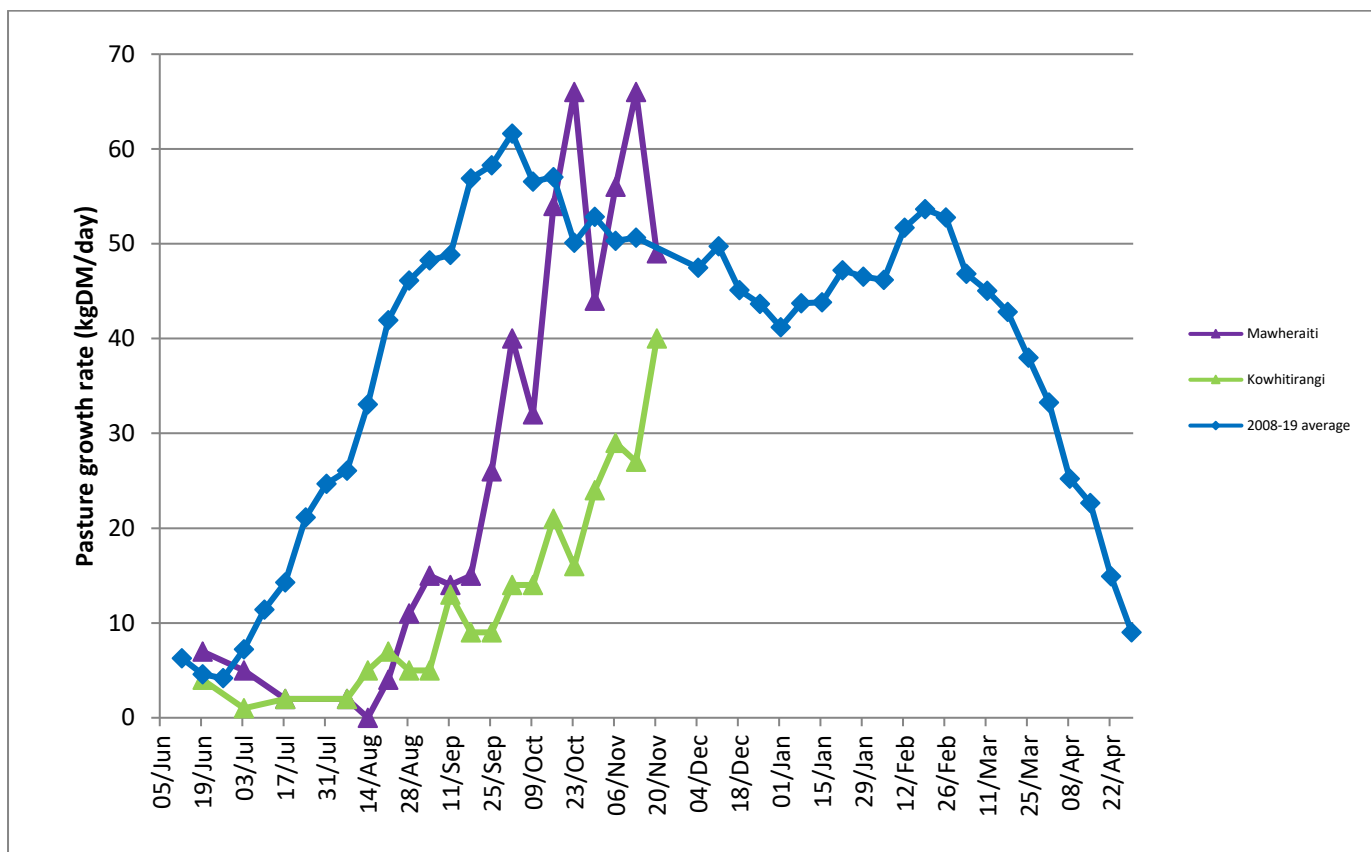
<https://www.dairynz.co.nz/business/mark-and-measure/>

Farm Summary

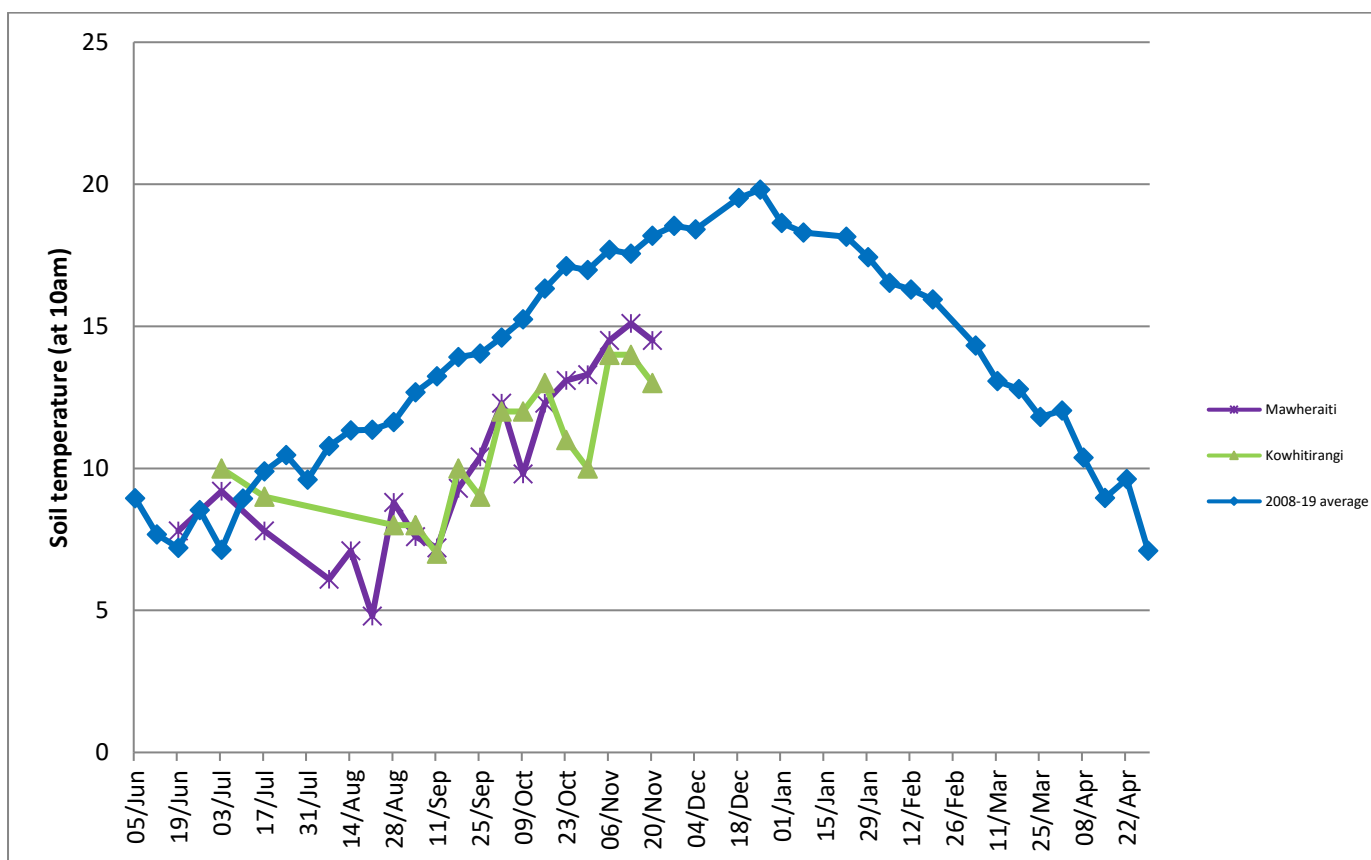
	Mawheraiti	Kowhitirangi
Average cover (kg DM/ha)	2391	2080
APC (3 July)	2411	1952
Rotation length (days)	24	24
Stocking rate	2.5	2.4
Percentage in milk	100	100
Milksolids kg/cow	1.91	1.80
Milksolids kg/ha	4.8	3.9
MS/cow (season to date)	146	169
MS/ha (season to date)	367	337
N (kg/ha) year to date	72	74
Current N application rate kg N/ha	24	-
	4 Nov	6 Nov
DM%	15.4	13.5
Pasture ME	12.2	12.5
Pasture NDF	46.6	43.8
Pasture CP	16.3	23.7
Target Intake (kg DM/cow/d)	19	18
Supplement (kg/cow/day)	0	4
Soil temperature (°C)	14.5	13
Growth Rate (kg DM/day)	49	40
Rainfall	65	280
Conditions for farmwalk	Heavy rain	Torrential rain

NB: pasture quality data are for 1 sample collected from each farm

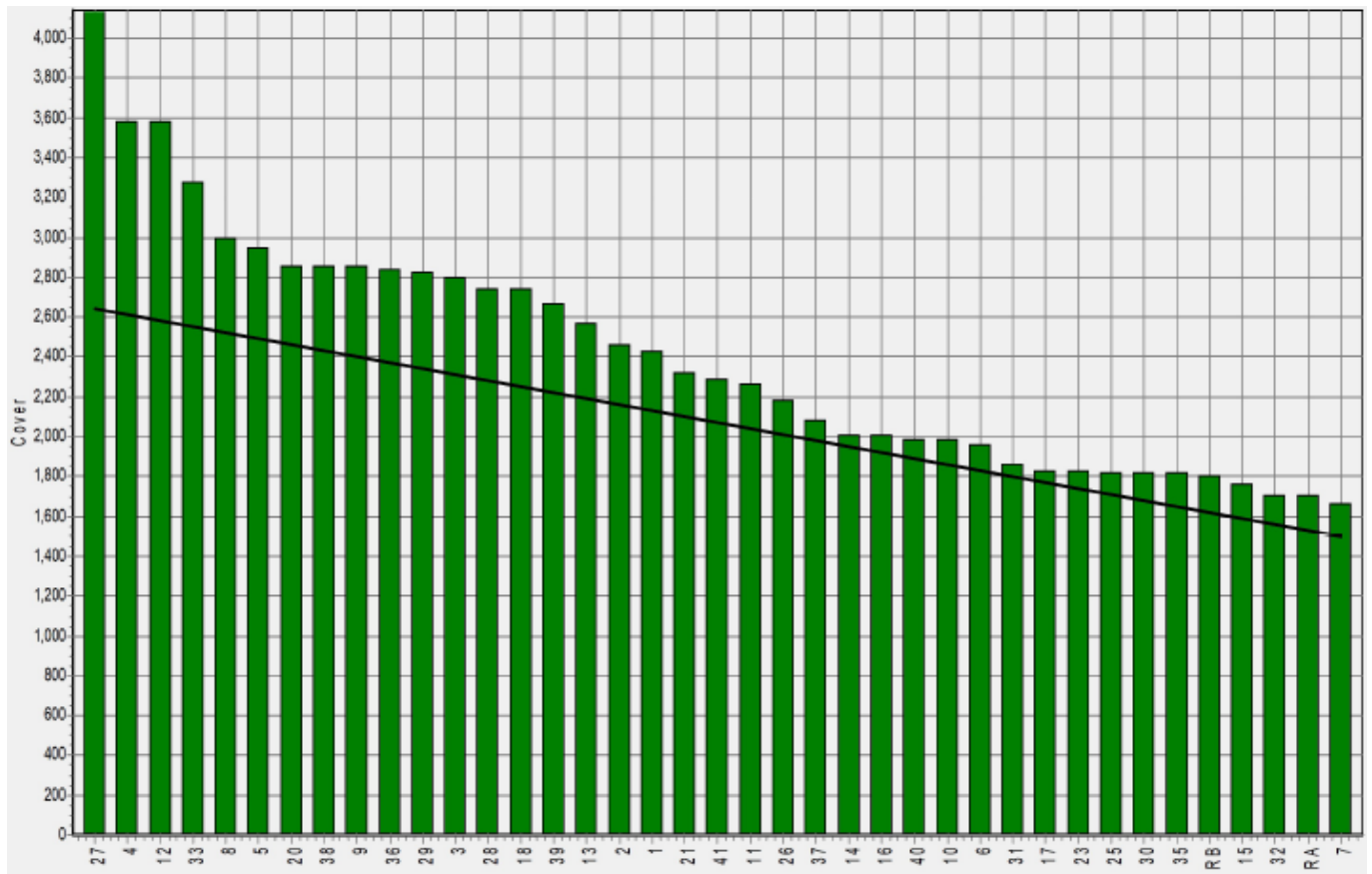
Weekly Pasture Growth Rates



Weekly Soil Temperature



Mawheraiti



Kowhitirangi

