

Westland Monitor Farm Project

Weekly Update as at week ending Wednesday 20th May 2020

CO Comment

Now is the time of year when animals start to move about with more frequency. Whether you are moving farm or sending your animals off to grazing now is a good time to refresh yourself of the requirements for stock movement. There are some fundamental requirements for the movements of NAIT animals on or off farm:

- Ensure all animals are tagged
- Ensure all animals are registered in the NAIT system
- Record a movement (on or off your NAIT location)

From June 14, it will become an offence to transport an untagged animal unless they have an unsafe to tag exemption. The offence does not apply to a transport operator carrying a paper or electronic ASD declaration from the farmer stating that the animals being moved are tagged and registered in NAIT.

The recent Covid-19 lockdown and restrictions have created a sudden increase in uptake of OSPRI's electronic ASD form, which enables farmers to make an animal status declaration online or with a smartphone.

The electronic ASD app currently supports movements of sheep, cattle, and deer from the last farm to slaughter only. Farmers are advised to get in touch with their livestock agent or supplier before registering with electronic ASD.

For paperless farm to farm transport, the sender can fill out an online ASD form. This must be sent or emailed to the transporter **in advance of the animals leaving the farm**. The sender must keep copies of all ASD forms that are sent or emailed.

Also a timely reminder that if you have a new person in charge of animals (PICA) coming onto your farm, they will need to have the herd NAIT number assigned to them.

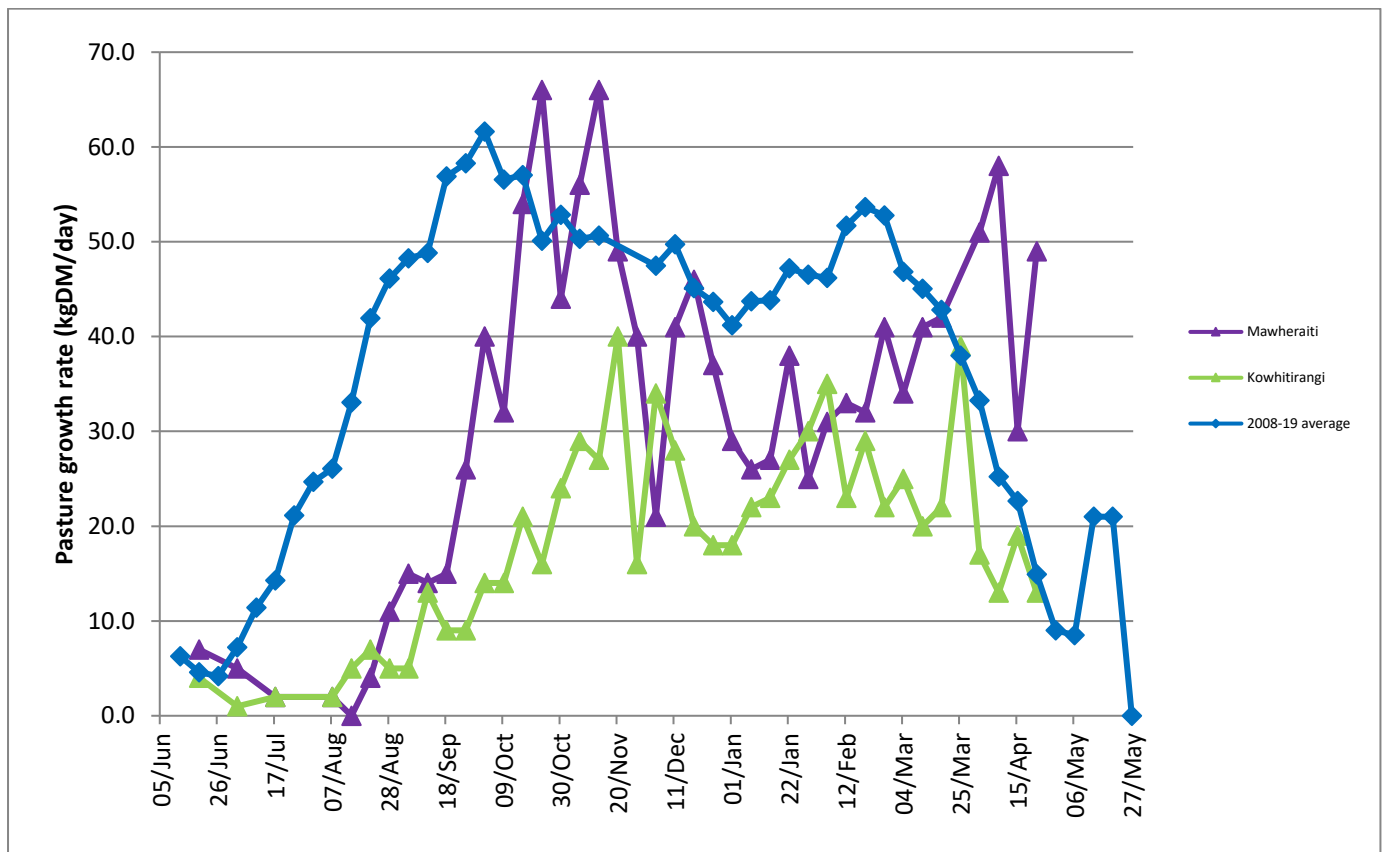
For more information on requirements regarding stock movements and requirements visit <https://ospri.co.nz/our-programmes/nait/moving-farm-moving-day/>

Farm Summary

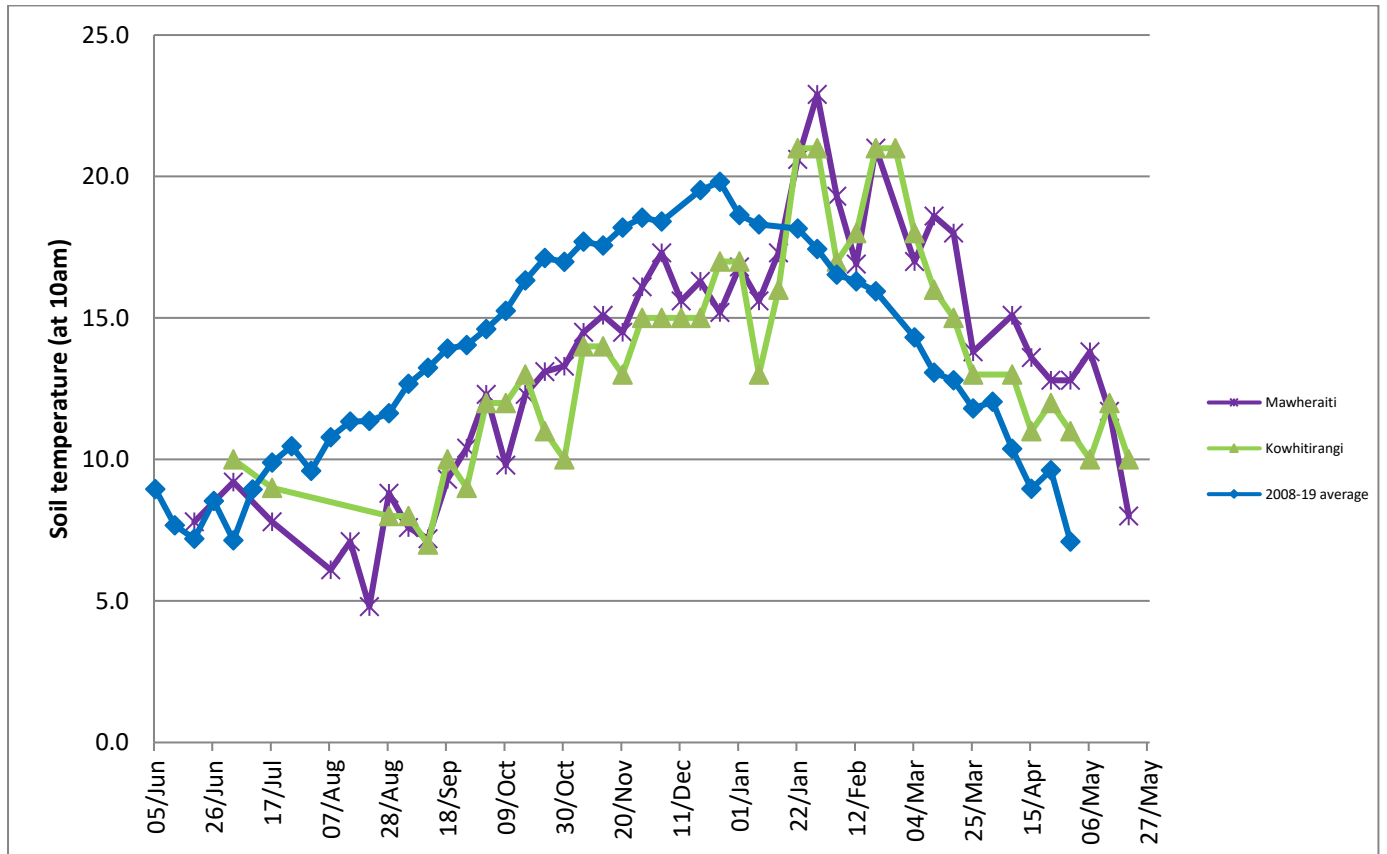
	Mawheraiti	Kowhitirangi
Average cover (kg DM/ha)	2121	1865
APC (13 May)	2072	1876
Rotation length (days)	32	38
Stocking rate	2.0	1.8
Percentage in milk	100	100
Milksolids kg/cow	1.31	0.97
Milksolids kg/ha	2.7	1.7
MS/cow (season to date)	412	459
MS/ha (season to date)	1037	916
N (kg/ha) year to date	267	282
Current N application rate kg N/ha	25	-
	2 Mar	4 Mar
DM%	11.4	11.6
Pasture ME	11.5	11.9
Pasture NDF	48.4	45.0
Pasture CP	28.5	29.5
Target Intake (kg DM/cow/d)	17	16
Supplement (kg/cow/day)	5.1	4
Soil temperature (°C)	8	10
Growth Rate (kg DM/day)	34	8
Rainfall	9	8
Conditions for farmwalk	Fine	Fine warm day, no rain

NB: pasture quality data are for 1 sample collected from each farm

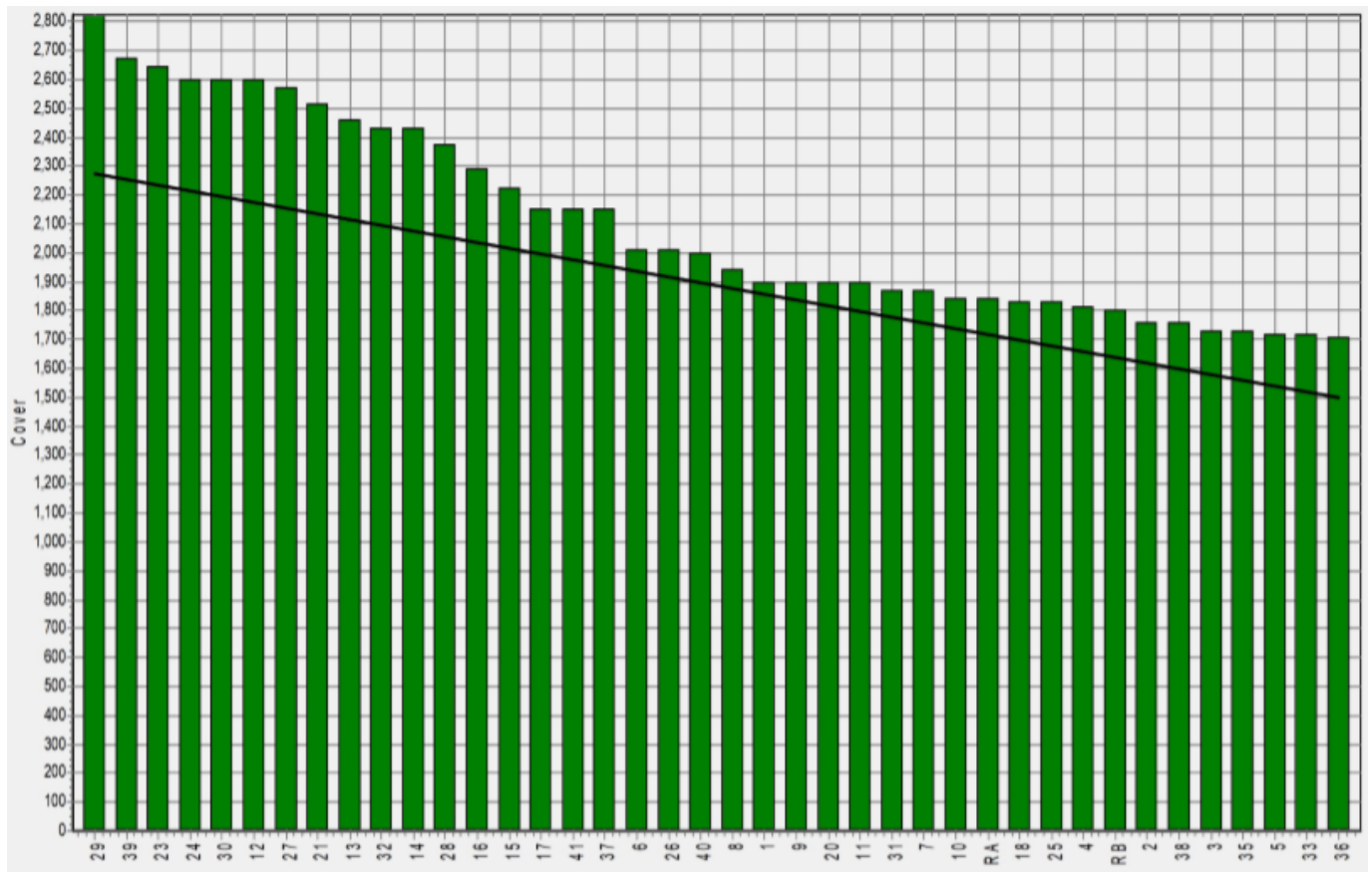
Weekly Pasture Growth Rates



Weekly Soil Temperature



Mawheraiti



Kowhitirangi

