

# Westland Monitor Farm Project

Weekly Update as at week ending Wednesday 22<sup>nd</sup> April 2020

## CO Comment

Good grazing management through autumn maximises the pasture you grow and utilise, balanced with allowing pastures to recover following any dry periods in the summer.

The secret to achieving this good grazing management is leaving consistent post-grazing residuals and graze pastures at the right time (2.5-3 leaves). Grazing ryegrass pastures too early reduces autumn growth and too late reduces quality.

### **Good management: improved persistence**

- Grazing at the 2½ - to 3-leaf stage. During May, the rotation length may be extended beyond this to start building feed for winter.
- Preventing grazing below 7 clicks/1500 kg DM/ha.
- If residuals are less than 7 clicks/1500 kg DM/ha, feed supplement to maintain herd intake and protect pasture.
- Be mindful not to allocate too much pasture area (fast rotation) immediately after rain or intensely graze pasture before plants reach the three leaf stage which will reduce recovery of tiller numbers during autumn.

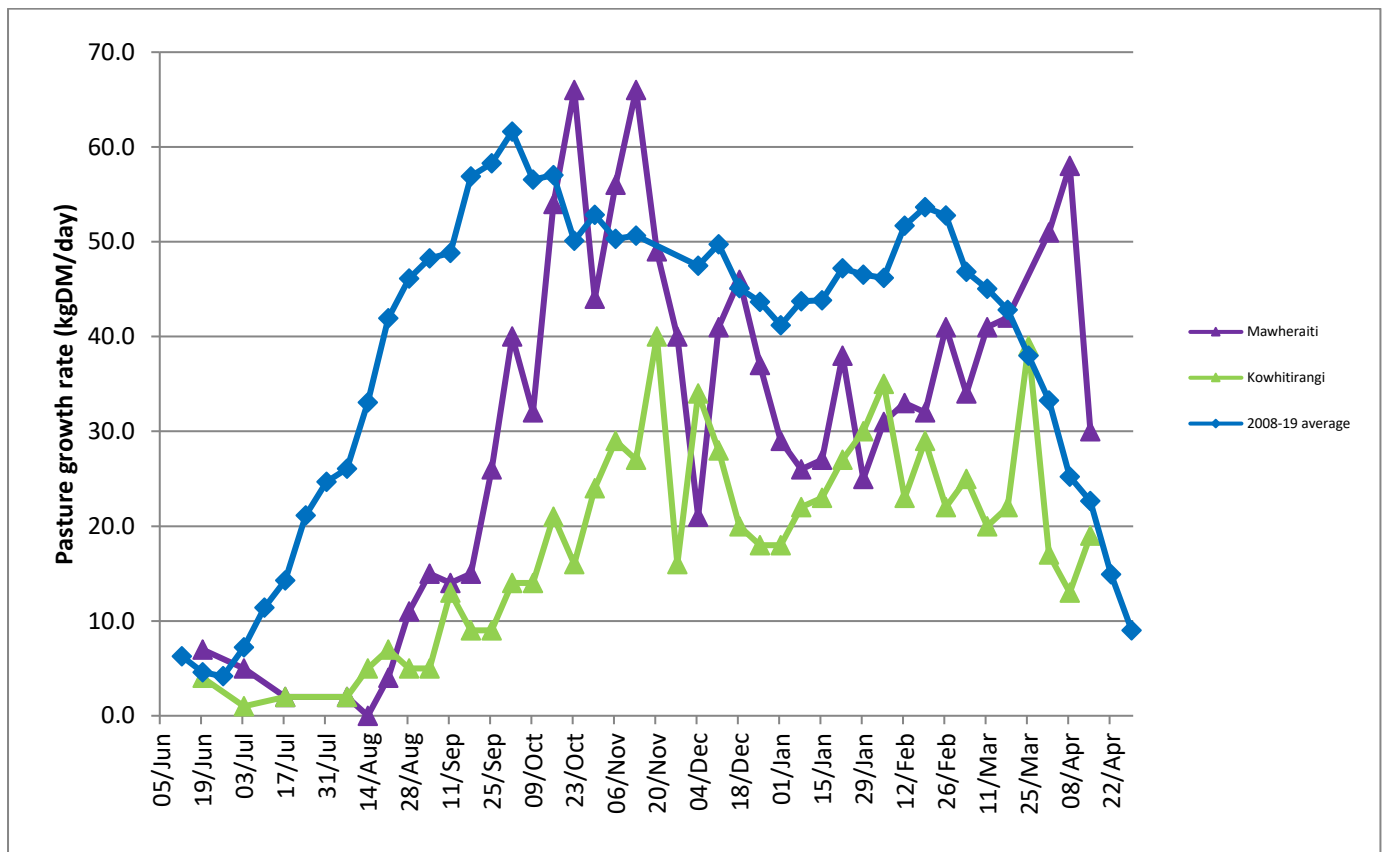
Use the Autumn Management Tool to identify the best options for achieving average pasture cover and cow body condition targets. The autumn management tool considers the profitability of milking versus drying cows off. Download it at <https://www.dairynz.co.nz/feed/pasture-management/assessing-farm-performance/autumn-management-tool/>

## Farm Summary

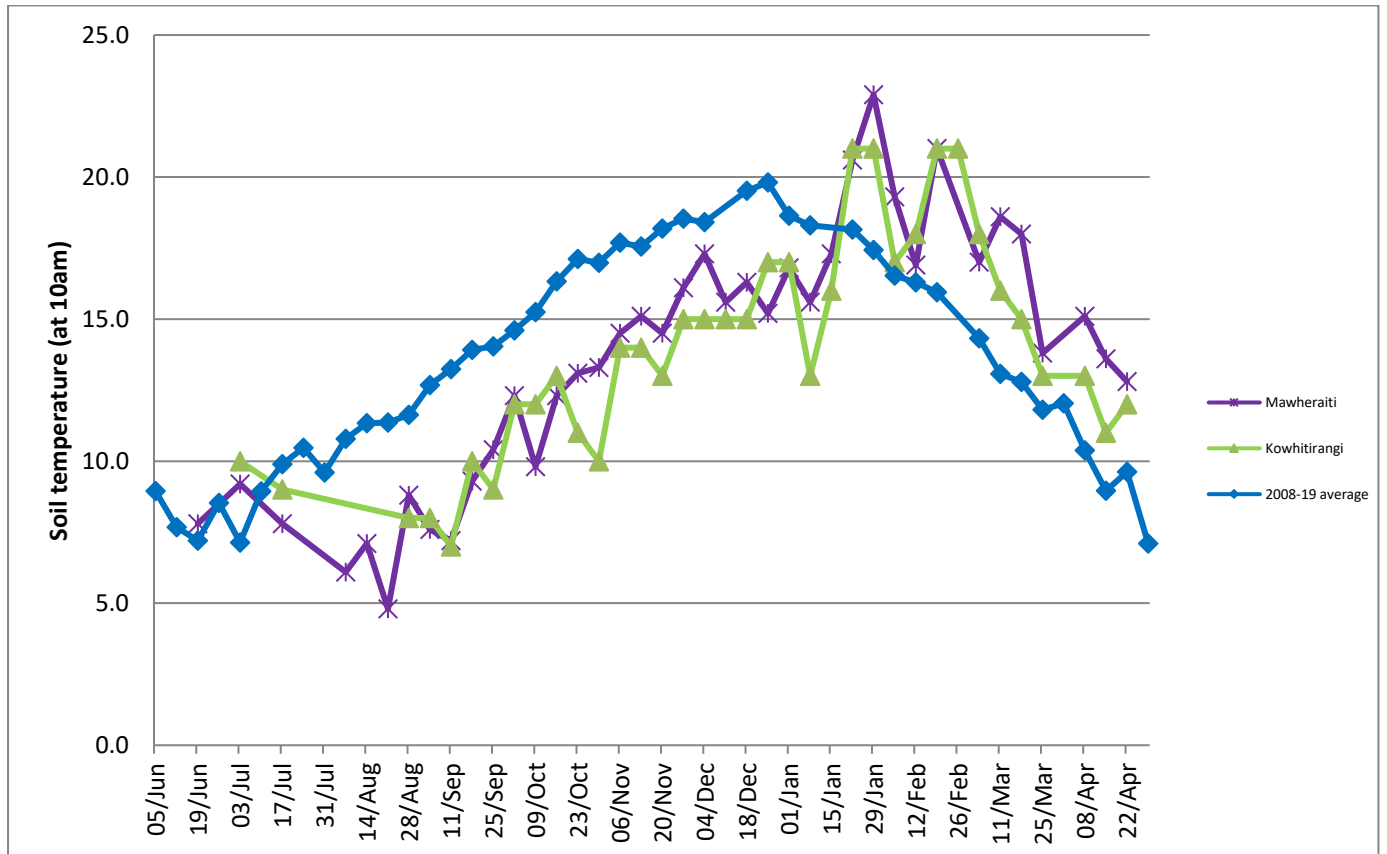
	Mawheraiti	Kowhitirangi
Average cover (kg DM/ha)	2635	1913
APC (15 April)	2675	1971
Rotation length (days)	29	29
Stocking rate	2.3	2.3
Percentage in milk	100	100
Milksolids kg/cow	1.48	1.61
Milksolids kg/ha	3.3	3.3
MS/cow (season to date)	378	426
MS/ha (season to date)	948	849
N (kg/ha) year to date	237	232
Current N application rate kg N/ha	25	25
	2 Mar	4 Mar
DM%	11.4	11.6
Pasture ME	11.5	11.9
Pasture NDF	48.4	45.0
Pasture CP	28.5	29.5
Target Intake (kg DM/cow/d)	17	17
Supplement (kg/cow/day)	2	3
Soil temperature (°C)	12.8	12
Growth Rate (kg DM/day)	30	19
Rainfall	75	132
Conditions for farmwalk	-	-

NB: pasture quality data are for 1 sample collected from each farm

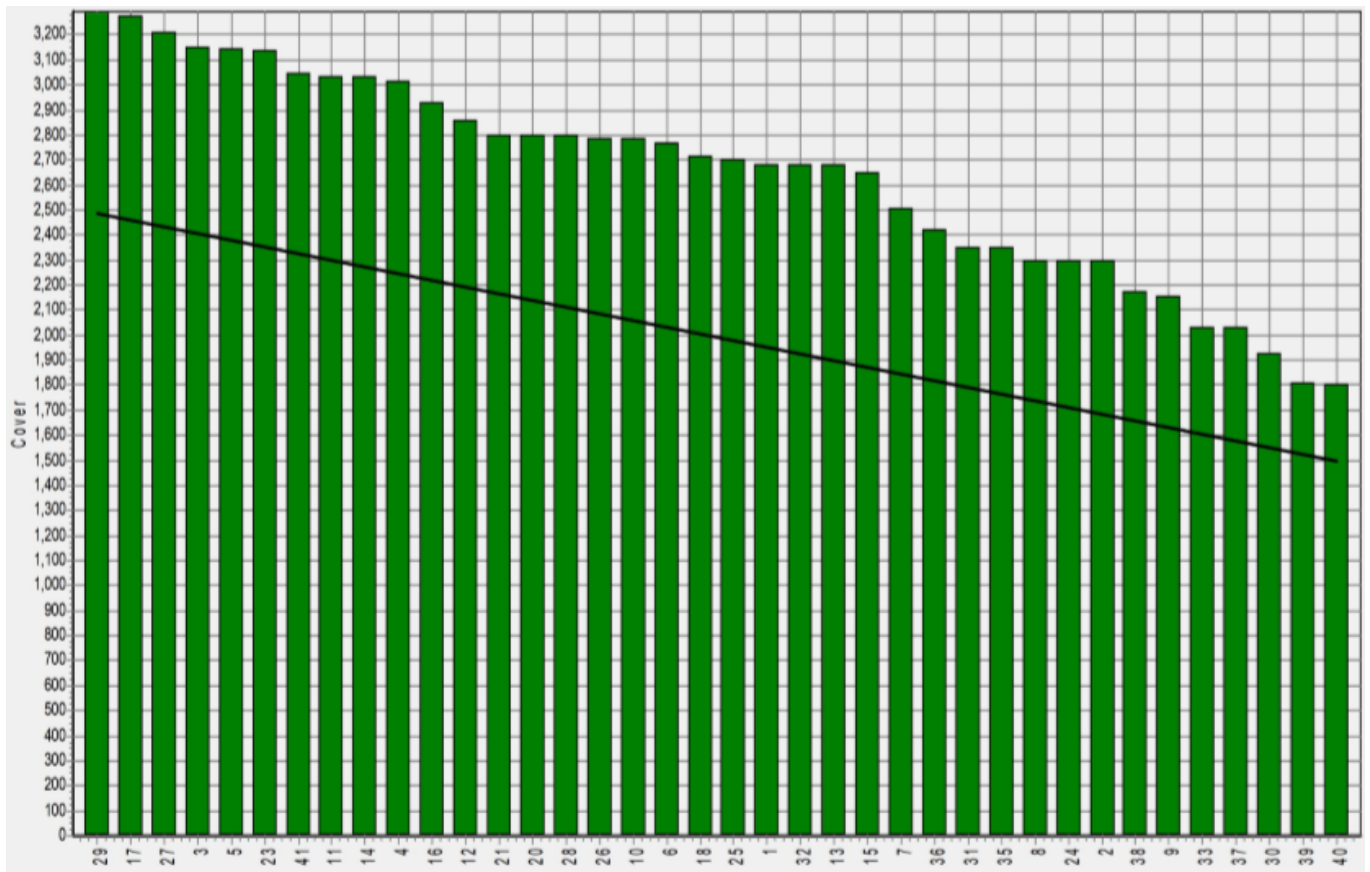
## Weekly Pasture Growth Rates



## Weekly Soil Temperature



## Mawheraiti



## Kowhitirangi

