

# Westland Monitor Farm Project

Weekly Update as at week ending Wednesday 23rd October 2019

## CO Comment

Finally, some warm sunshine this week! Grass around the region is looking a healthy green state now and growing rather than pale and yellow due to lack of sunshine hours.

Farmers are flat out getting fertiliser applied, trying to work and look to sow down winter crop paddocks and the occasional farm has managed to take a small cut of silage off surplus land to the dairy platform.

Manage round length so it can build the feed wedge according to growth rates and as things improve over the next week to 10 days, with the hopeful goal of growth meeting demand and being able to minimise supplements fed.

The round of discussion groups is continuing across the region over the next week, talking cows, grass, current situations on farms, the Freshwater package, what's instore for the area from DairyNZ, and much more so take a look at the link below and get along to an event near you.

<https://www.dairynz.co.nz/events/?region=5454>

Reminder that we encourage all farmers to make a submission on the proposed Essential Freshwater Package. Only 3 days until this closes now.

In your submission, you can include comments on what you agree with and what you disagree with. If you disagree with a proposal, do you have ideas for an alternative which could be effective? You can also include comments about what you are already doing on your farm to improve water quality.

Submissions close on October 31 and can be made at <https://www.dairynz.co.nz/environment/in-your-region/essential-freshwater-package/>

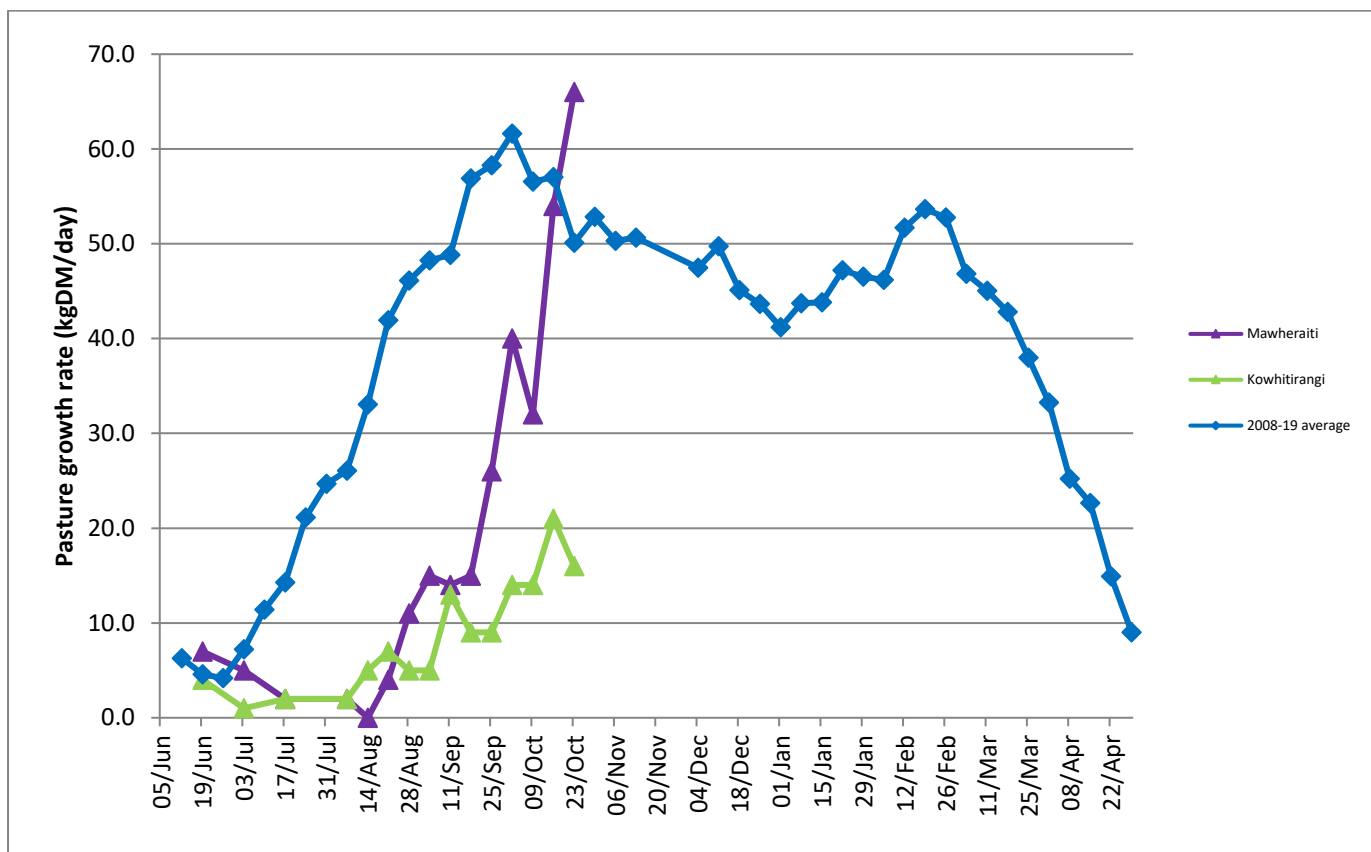
If you would like to discuss the process around submissions or any concerns about what this may mean for your business feel free to contact DairyNZ at <https://www.dairynz.co.nz/contact-us/regional-teams/?region=6803>

## Farm Summary

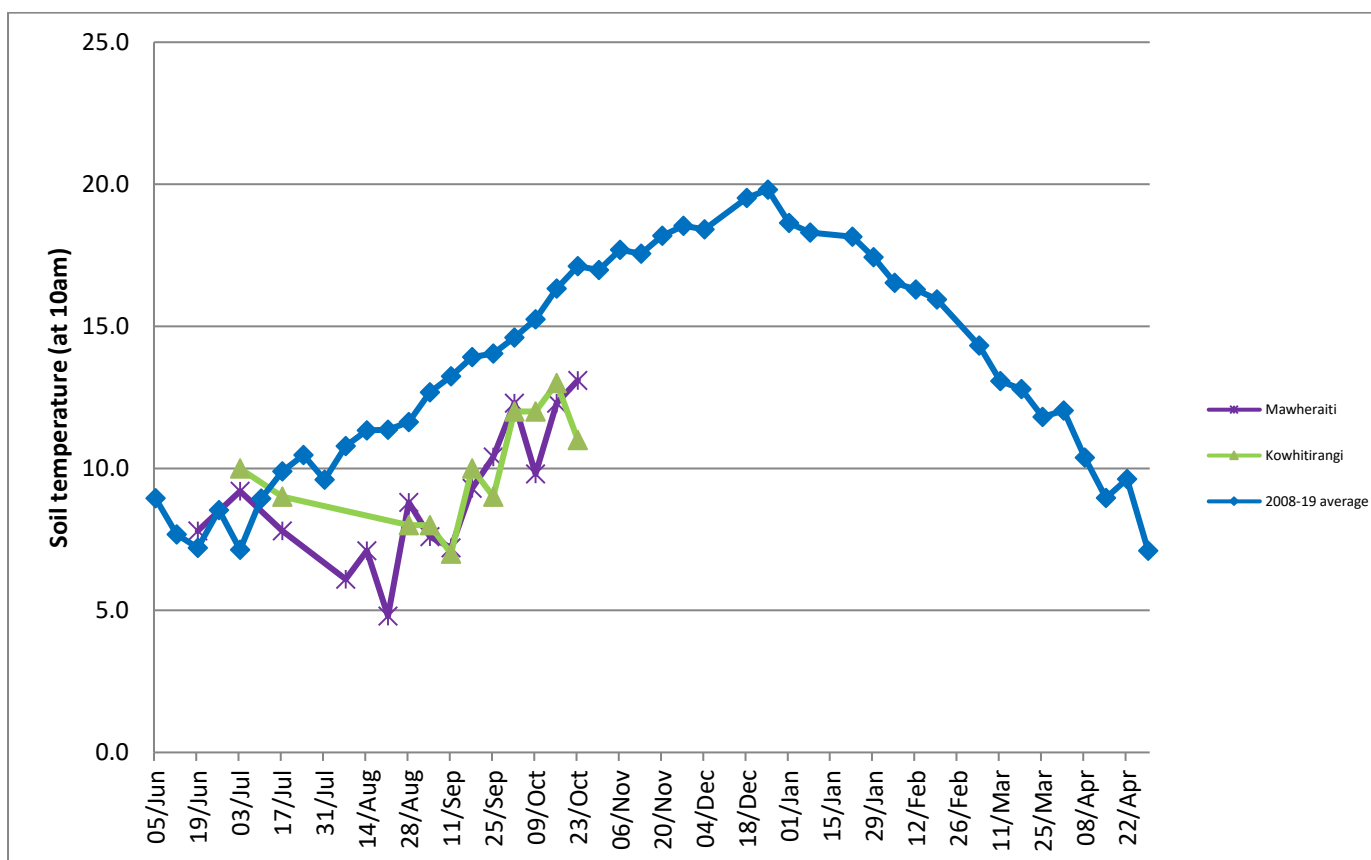
	Mawheraiti	Kowhitirangi
Average cover (kg DM/ha)	2302	1887
APC (3 July)	2200	1857
Rotation length (days)	24	24
Stocking rate	2.4	2.3
Percentage in milk	100	100
Milksolids kg/cow	2.07	1.80
Milksolids kg/ha	5.2	3.9
MS/cow (season to date)	91	112
MS/ha (season to date)	228	223
N (kg/ha) year to date	51	51
Current N application rate kg N/ha	24	-
	2 Sept	9 Oct
DM%	15.5	15.0
Pasture ME	12.3	12.2
Pasture NDF	48.3	45.2
Pasture CP	24.0	25.6
Target Intake (kg DM/cow/d)	19	18.5
Supplement (kg/cow/day)	0	2.7
Soil temperature (°C)	13.1	11
Growth Rate (kg DM/day)	66	16
Rainfall	40	140
Conditions for farmwalk	Fine and cold, farm very wet	Fine, cold wind, farm very wet

NB: pasture quality data are for 1 sample collected from each farm

## Weekly Pasture Growth Rates



## Weekly Soil Temperature



### Mawheraiti



### Kowhitirangi

