

# Westland Monitor Farm Project

Weekly Update as at week ending Wednesday 25<sup>th</sup> March 2020

## CO Comment

I hope everyone is coping OK with the current changes regarding Covid-19.

In terms of our dairy farm businesses we have been classified as an essential service, but this does not mean it will be business as usual.

By now you should have determined whether you needed to register your farm business with MPI if you have 5 or more staff and completed this as per the Government guidelines.

Your employees, and contractors such as sharemilkers, contract milkers and other independent contractors working for you need to carry with them a letter, authorising their travel to work at an essential service. They will also need to carry identification such as a driver's licence. I have heard of several instances where patrols have stopped staff on their way to work.

At DairyNZ we are working on bringing you Discussion Groups online. Once set up, you will be notified of events via email and text as per usual. In the meantime, you can contact me at [angela.leslie@dairynz.co.nz](mailto:angela.leslie@dairynz.co.nz) or by phone on 021 277 2894.

In this time of uncertainty, it's a good idea to check in frequently with your team – and even your neighbours and community - and understand the questions they have about the effects of COVID-19 and its potential impact on your farm.

Make sure you check the [DairyNZ Covid-19](#) webpage to keep up to date with this fast moving pandemic response. It is being updated very regularly.

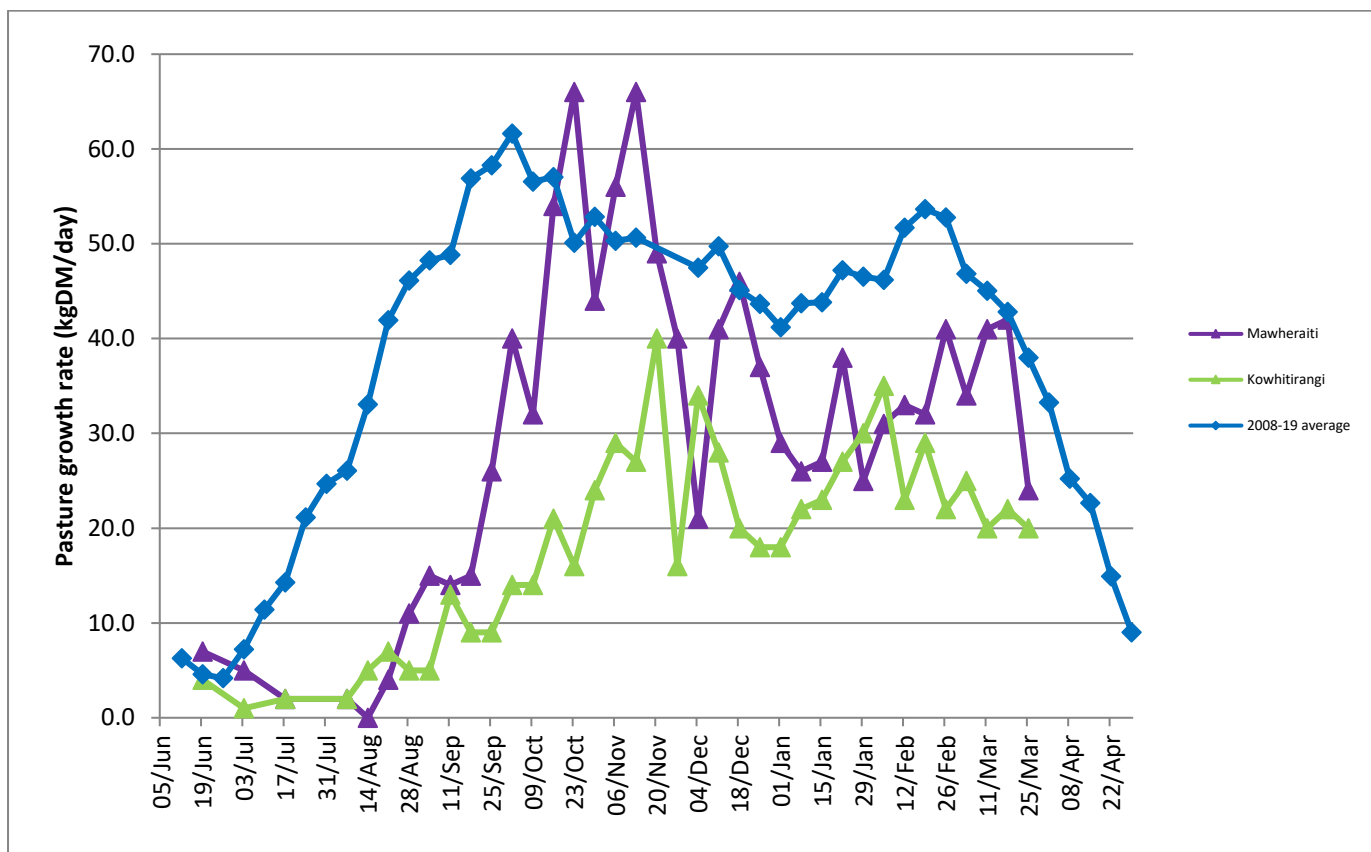
For the latest on the National response to Covid-19 visit the [Ministry of Health](#) website.

## Farm Summary

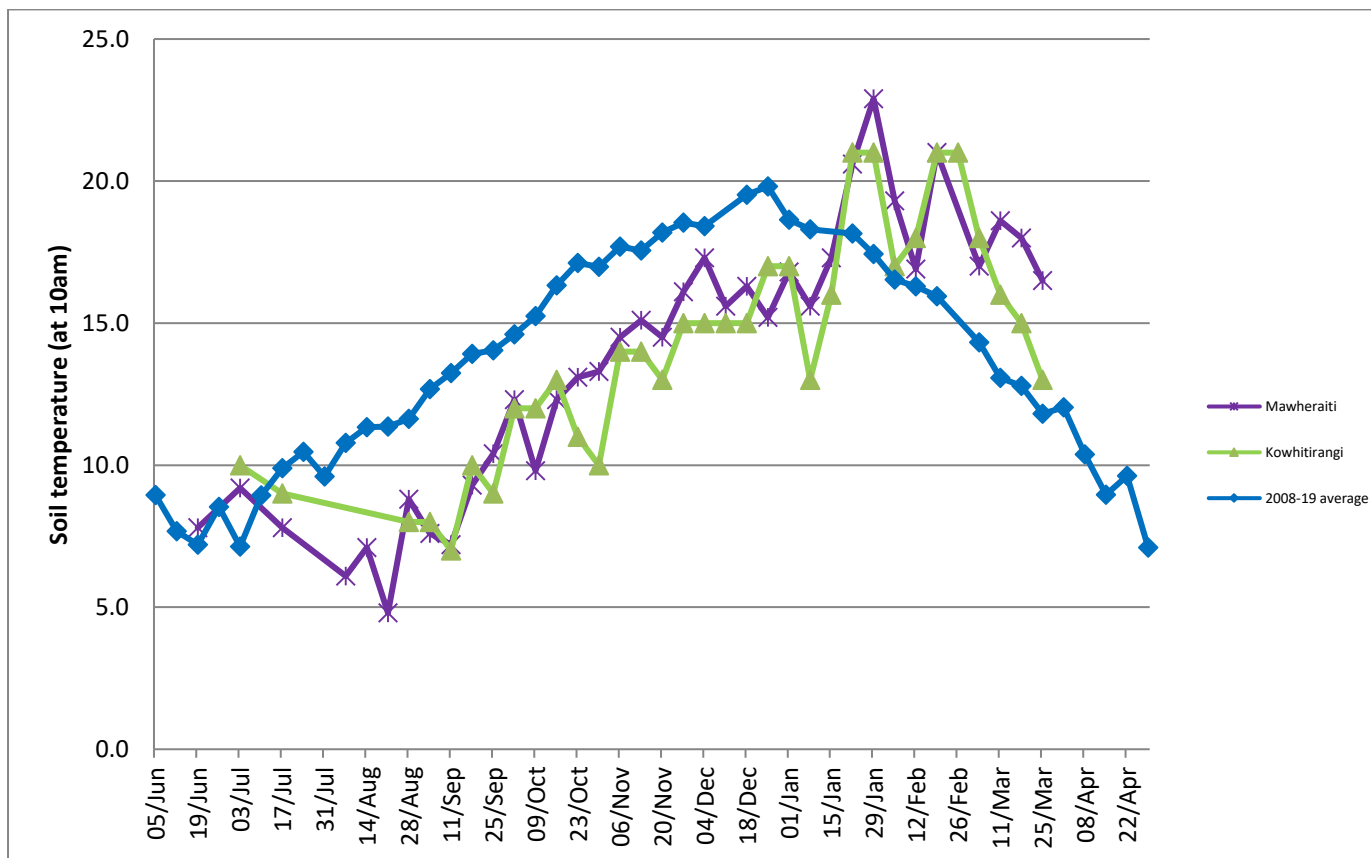
	Mawheraiti	Kowhitirangi
Average cover (kg DM/ha)	2069	1977
APC (18 March)	2171	1999
Rotation length (days)	28	28
Stocking rate	2.3	2.3
Percentage in milk	100	100
Milksolids kg/cow	1.52	1.39
Milksolids kg/ha	3.5	2.9
MS/cow (season to date)	341	381
MS/ha (season to date)	854	760
N (kg/ha) year to date	208	207
Current N application rate kg N/ha	25	-
	2 Mar	4 Mar
DM%	11.4	11.6
Pasture ME	11.5	11.9
Pasture NDF	48.4	45.0
Pasture CP	28.5	29.5
Target Intake (kg DM/cow/d)	17	18
Supplement (kg/cow/day)	0	2
Soil temperature (°C)	16.5	13
Growth Rate (kg DM/day)	24	20
Rainfall	25	50
Conditions for farmwalk	Fine and warm	Fine but cold

NB: pasture quality data are for 1 sample collected from each farm

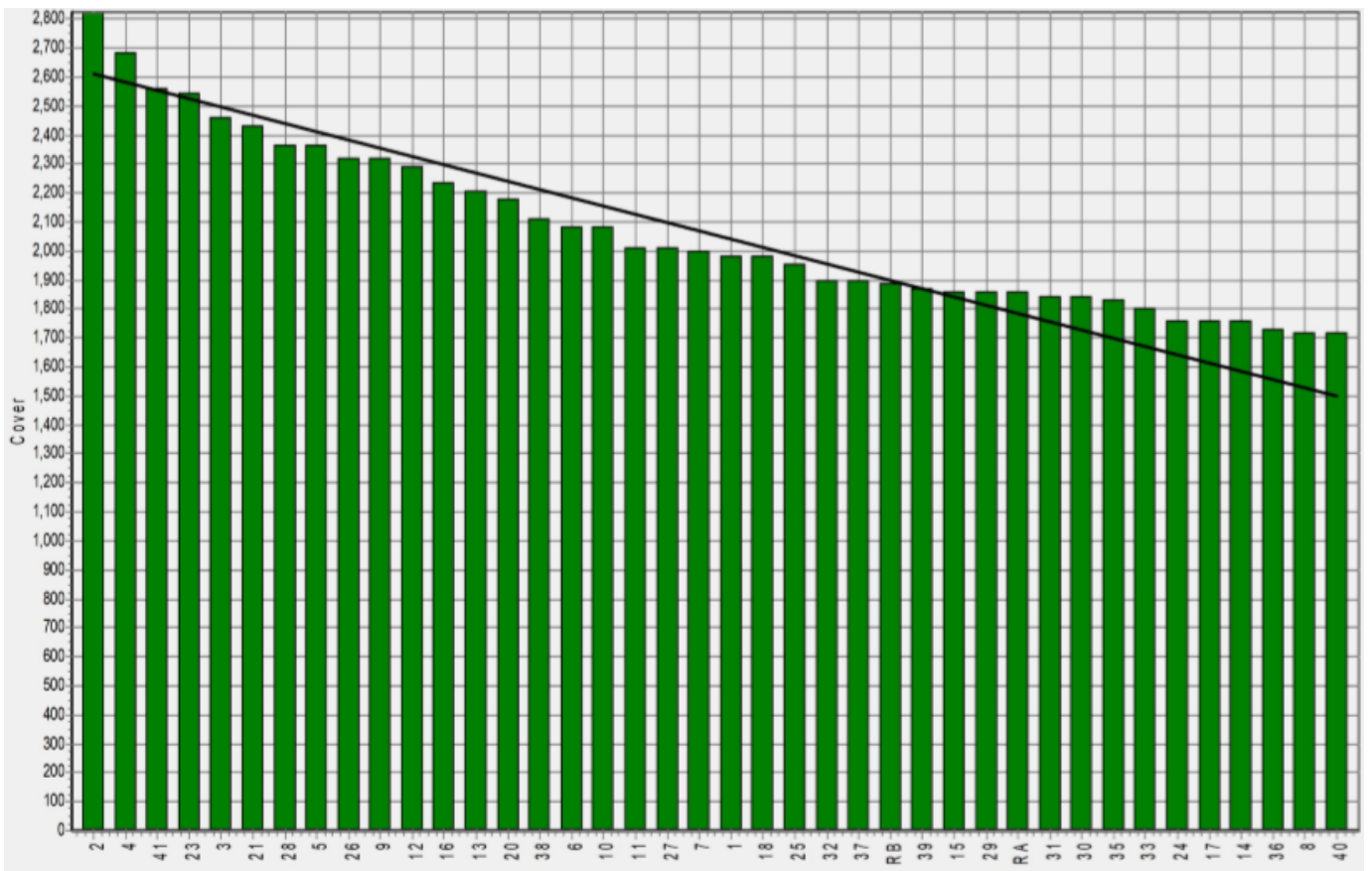
## Weekly Pasture Growth Rates



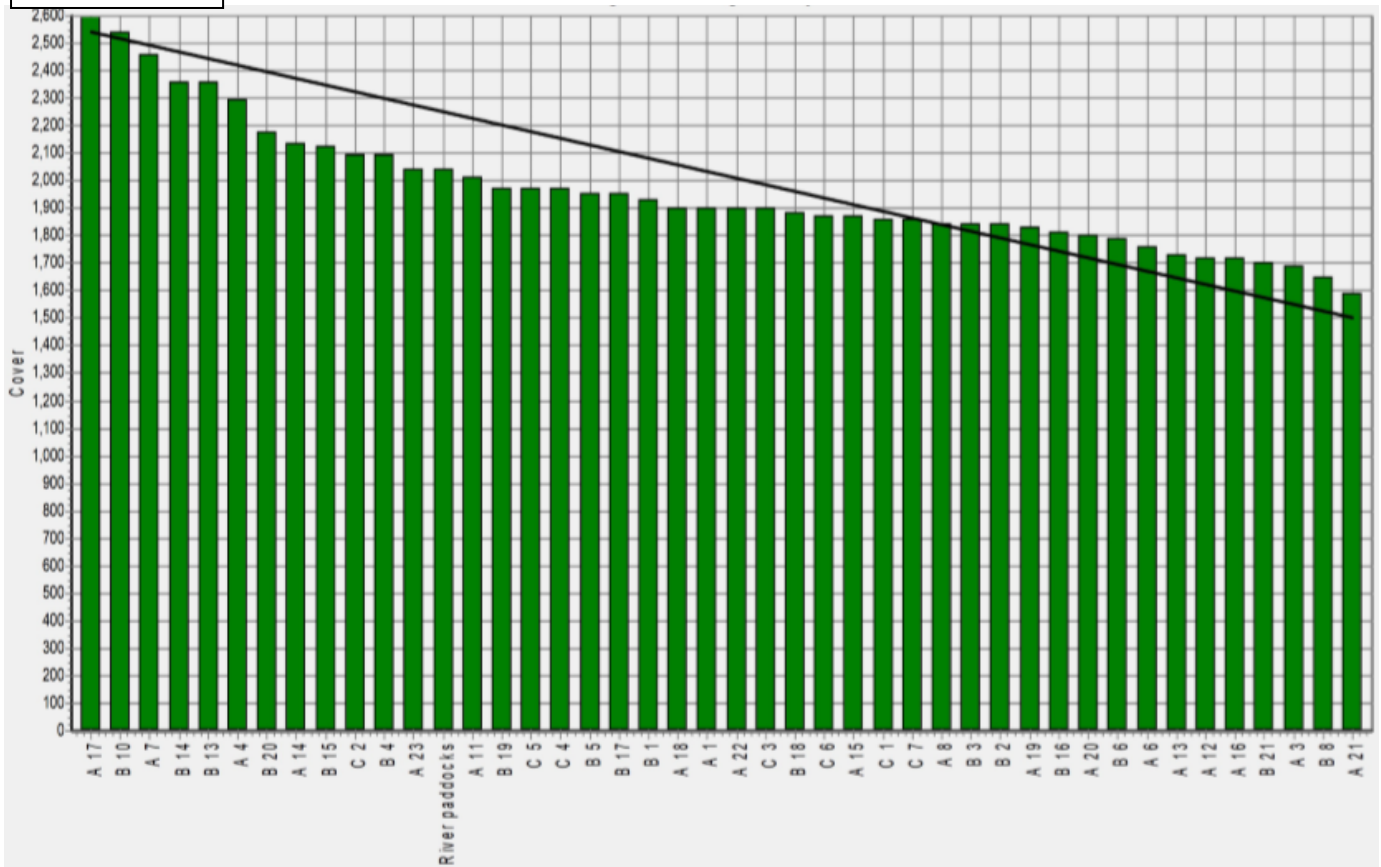
## Weekly Soil Temperature



### Mawheraiti



### Kowhitirangi





Kowhitirangi

Description	Date	RPM	% DM	% Prot	% Lipid	% ADF	% NDF	Sol Sugar	OMD %	MJME /kg
Paddock 5b	17/07/19	13.8	14.3	24.3	3.9	18.4	43.1	14.2	85.2	12.4
Paddock 3c	4/09/19	10.8	17.3	24.0	3.5	15.7	36.1	21.1	>85	12.6
Paddock 9b	9/10/19	8.9	15.0	25.6	3.3	22.3	45.2	10.5	83.3	12.2
Paddock 15a	6/11/19	9.0	13.5	23.7	3.8	20.4	43.8	12.2	>85	12.5
Paddock 13a	4/12/19	13.3	11.5	29.4	3.2	24.5	43.3	6.4	85.0	12.4
Paddock 13b	15/1/20	10.0	19.5	18.8	3.4	24.1	44.7	13.8	76.8	11.2
Paddock 4a	5/2/20	13.8	9.9	24.8	3.3	30.5*	53.1	2.1	76.0	11.1
Paddock 14a	4/3/20	16.0	11.6	29.5	3.3	22.9	45.0	6.4	81.7	11.9

\* Test analytes which have occurred as outliers on the NIRS calibration are indicated by \* and should be treated as an approximation only.