

Westland Monitor Farm Project

Weekly Update as at week ending Wednesday 25th September 2019

CO Comment

Spring is kicking into gear now with some warmer weather and grass growth rates on the rise. Calving is approaching the end stragglers now. Most farms have achieved good heifer replacement rates for this spring.

With farmers starting to look towards mating just around the corner and wanting to improve in-calf rates, now is the time to be Metri-checking cows in the milking herd and treating any infections that maybe hiding inside. Tail paint, observe and record pre-mating heats, have bull power calculated and booked for young stock and tailing off herds for those that do. Recommended rate of 1 bull per 20 animals not in-calf for ultimate bull fertility power.

Reminder that we encourage all farmers to make a submission on the proposed Essential Freshwater Package.

In your submission, you can include comments on what you agree with and what you disagree with. If you disagree with a proposal, do you have ideas for an alternative which could be effective? You can also include comments about what you are already doing on your farm to improve water quality. DairyNZ will develop guidance to help inform your answers based on the analysis that is currently underway.

Submissions close on October 31 and can be made at <https://www.dairynz.co.nz/environment/in-your-region/essential-freshwater-package/>

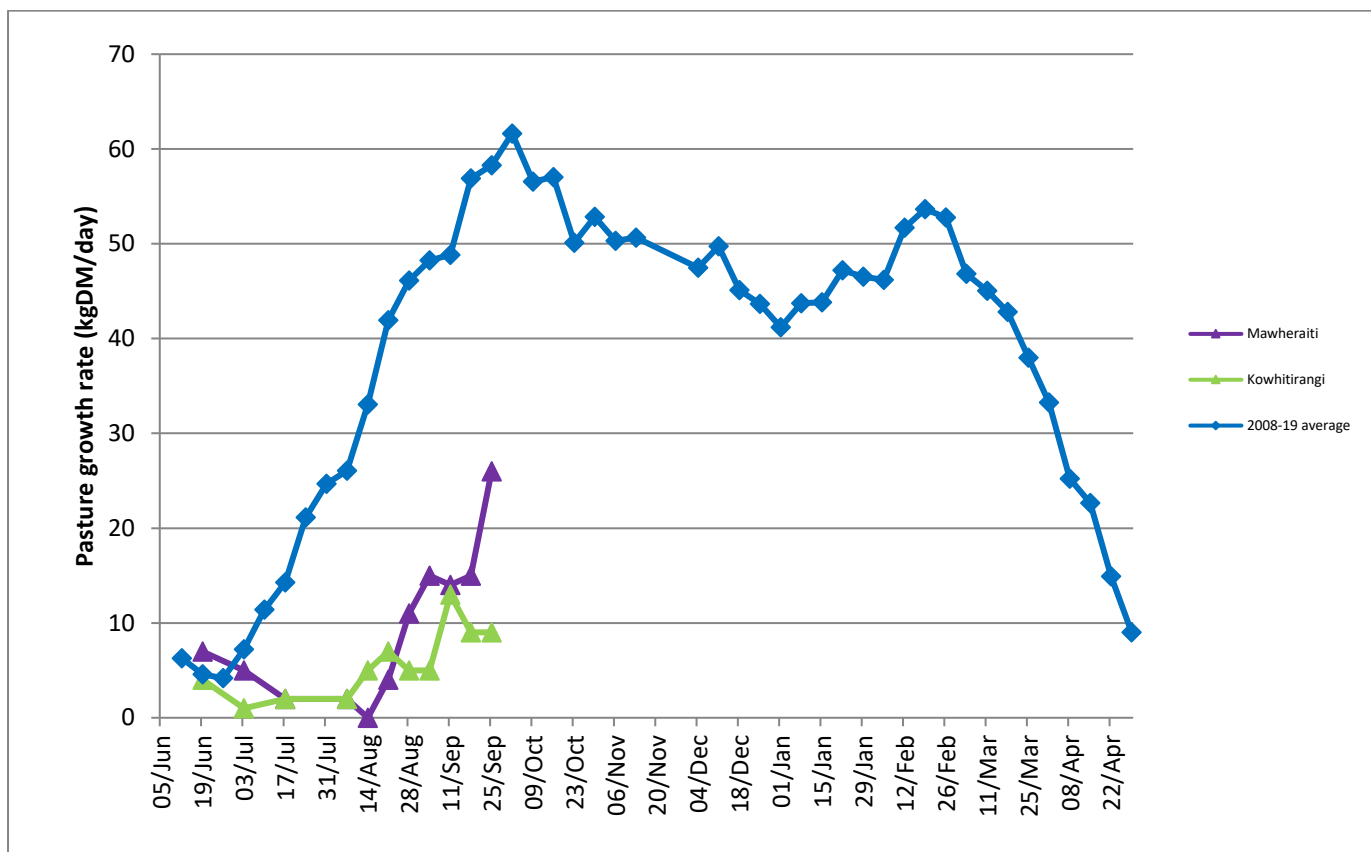
If you would like to discuss the process around submissions or any concerns about what this may mean for your business feel free to contact DairyNZ at <https://www.dairynz.co.nz/contact-us/regional-teams/?region=6803>

Farm Summary

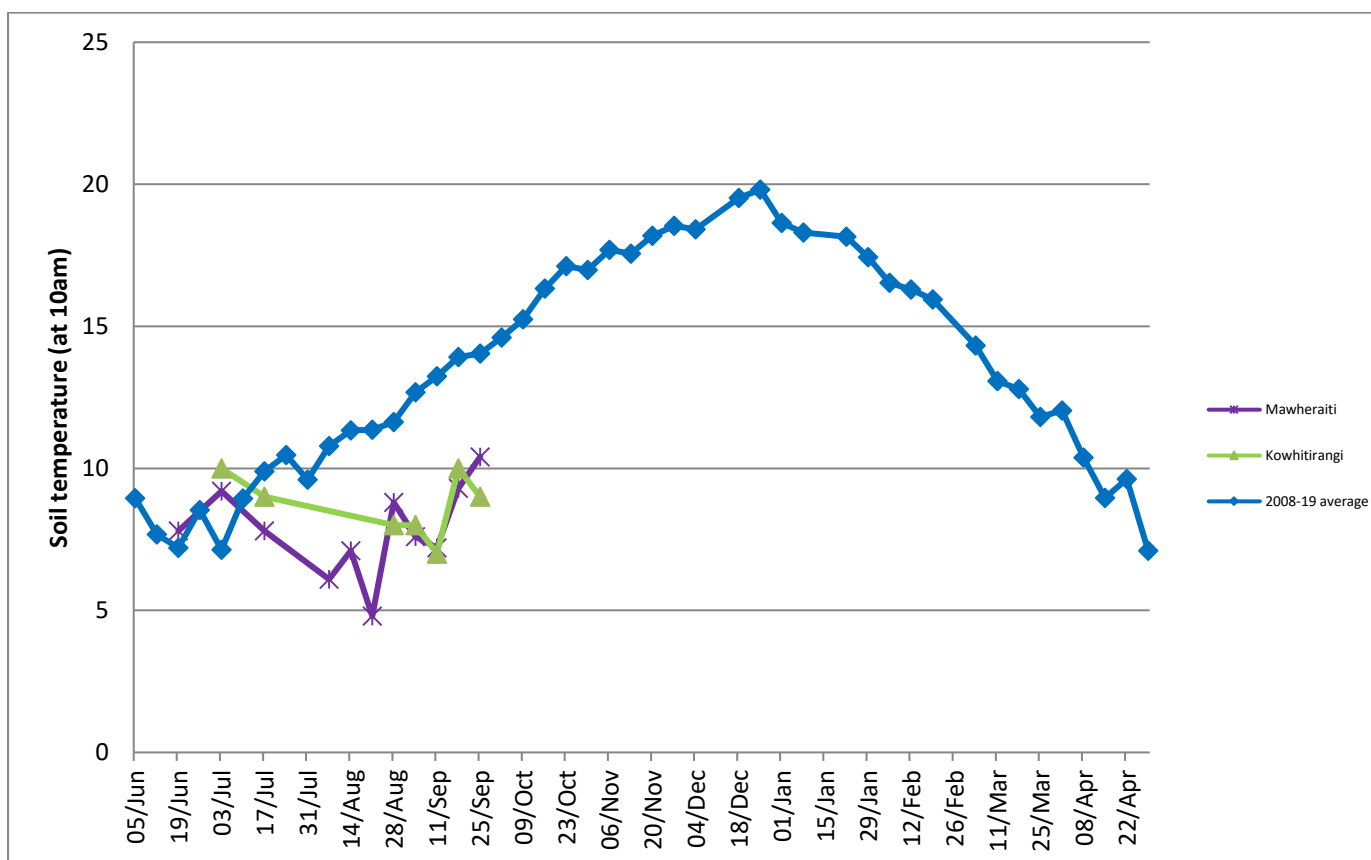
	Mawheraiti	Kowhitirangi
Average cover (kg DM/ha)	2238	1819
APC (3 July)	2213	1838
Rotation length (days)	40	30
Stocking rate	2.1	1.9
Percentage in milk	92	97
Milksolids kg/cow	1.71	1.98
Milksolids kg/ha	3.7	3.9
MS/cow (season to date)	35	55
MS/ha (season to date)	87	109
N (kg/ha) year to date	37	44
Current N application rate kg N/ha	-	-
	2 Sept	4 Sept
DM%	15.5	17.3
Pasture ME	12.3	12.6
Pasture NDF	48.3	36.1
Pasture CP	24.0	24.0
Target Intake (kg DM/cow/d)	18	18
Supplement (kg/cow/day)	0.9	3.6
Soil temperature (°C)	10.4	9
Growth Rate (kg DM/day)	26	9
Rainfall	50	45
Conditions for farmwalk	Cold and raining	Raining, freezing cold wind, sleet, high of 5 degrees

NB: pasture quality data are for 1 sample collected from each farm

Weekly Pasture Growth Rates



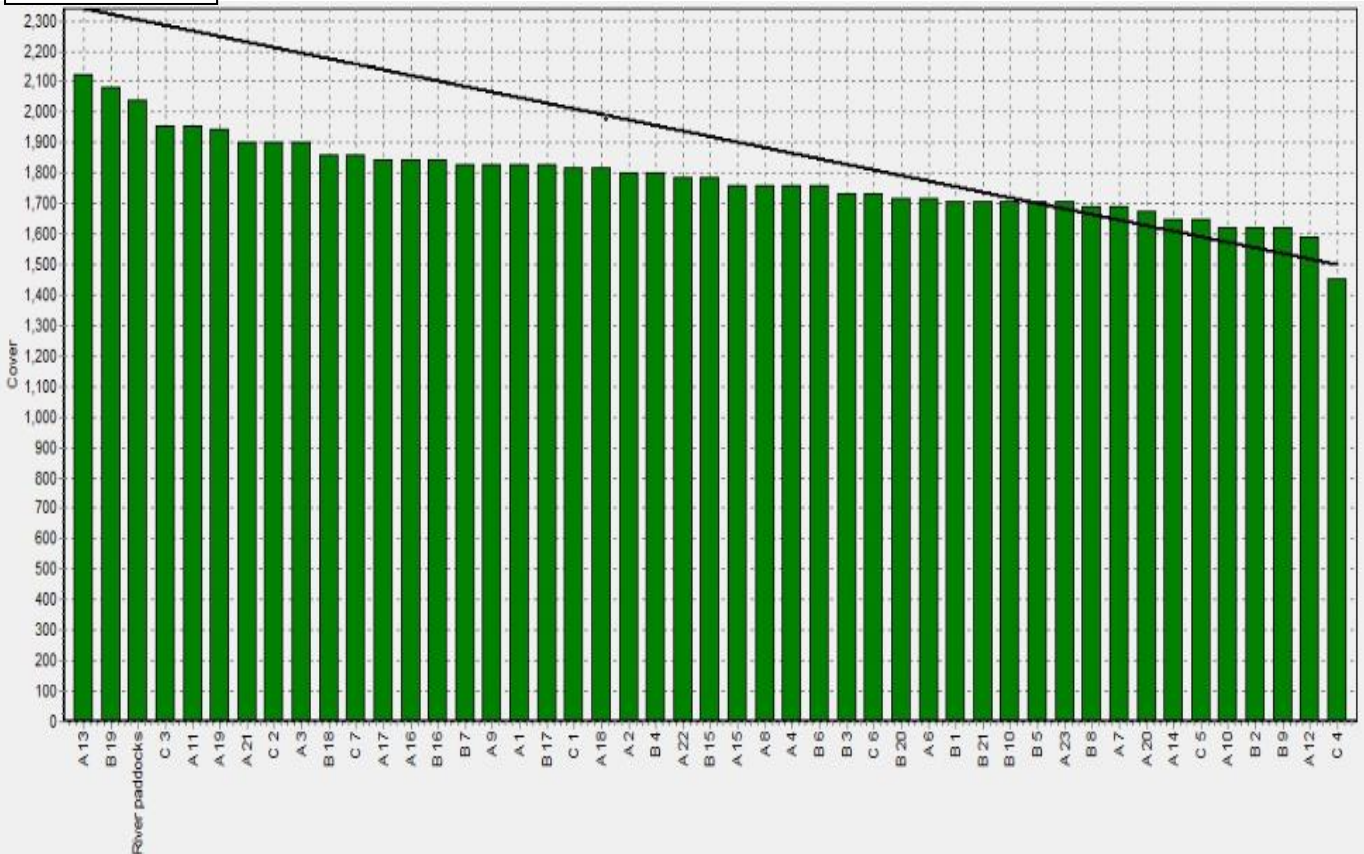
Weekly Soil Temperature



Mawheraiti



Kowhitirangi



Mawheraiti

Description	Date	RPM	% DM	% Prot	% Lipid	% ADF	% NDF	Sol Sugar	OMD %	MJME/kg
Paddock 2	15/07/19	15.4	12.7	30.2	3.8	19.2	38.4	8.5	88.8	13.0
Paddock 17	2/09/19	16.8	15.5	24.0	4.7	11.4	48.3	12.0	84.4	12.3

Kowhitirangi

Description	Date	RPM	% DM	% Prot	% Lipid	% ADF	% NDF	Sol Sugar	OMD %	MJME /kg
Paddock 5b	17/07/19	13.8	14.3	24.3	3.9	18.4	43.1	14.2	85.2	12.4
Paddock 3c	4/09/19	10.8	17.3	24.0	3.5	15.7	36.1	21.1	>85	12.6