

Westland Monitor Farm Project

Weekly Update as at week ending Wednesday 28th August 2019

CO Comment

Whilst not the wettest spring on record, the West Coast has started the season with some damp conditions.

Research has shown that pasture seriously pugged in Spring will produce about 40% less DM than undamaged pasture through the following season. For each ha of damaged pasture with a normal production of 14,000kg DM, (av. Grown on the research farm) this is equivalent to a loss of 5600kg DM, at 20c/kgDM this is a revenue loss of over \$1000/ha. Pasture yield reductions of up to 80% have been recorded.

Losses will continue over following years as the affected areas will likely become infested with weeds and unproductive grasses. If soil structure is not repaired affected areas will also become more prone to future pugging due to impeded drainage.

Back-fencing as much as possible will help minimise soil pugging and compaction damage. It will also reduce the volumes of surface runoff generated.

Identify significantly wet areas of a paddock known as the critical source area (CSA). If possible, the CSA should be the last break grazed in the paddock (if it needs to be grazed at all). It may not always be practical to do this but being aware of where the most pugging damage will occur and trying to mitigate it will not only prevent pugging damage but also reduce surface runoff.

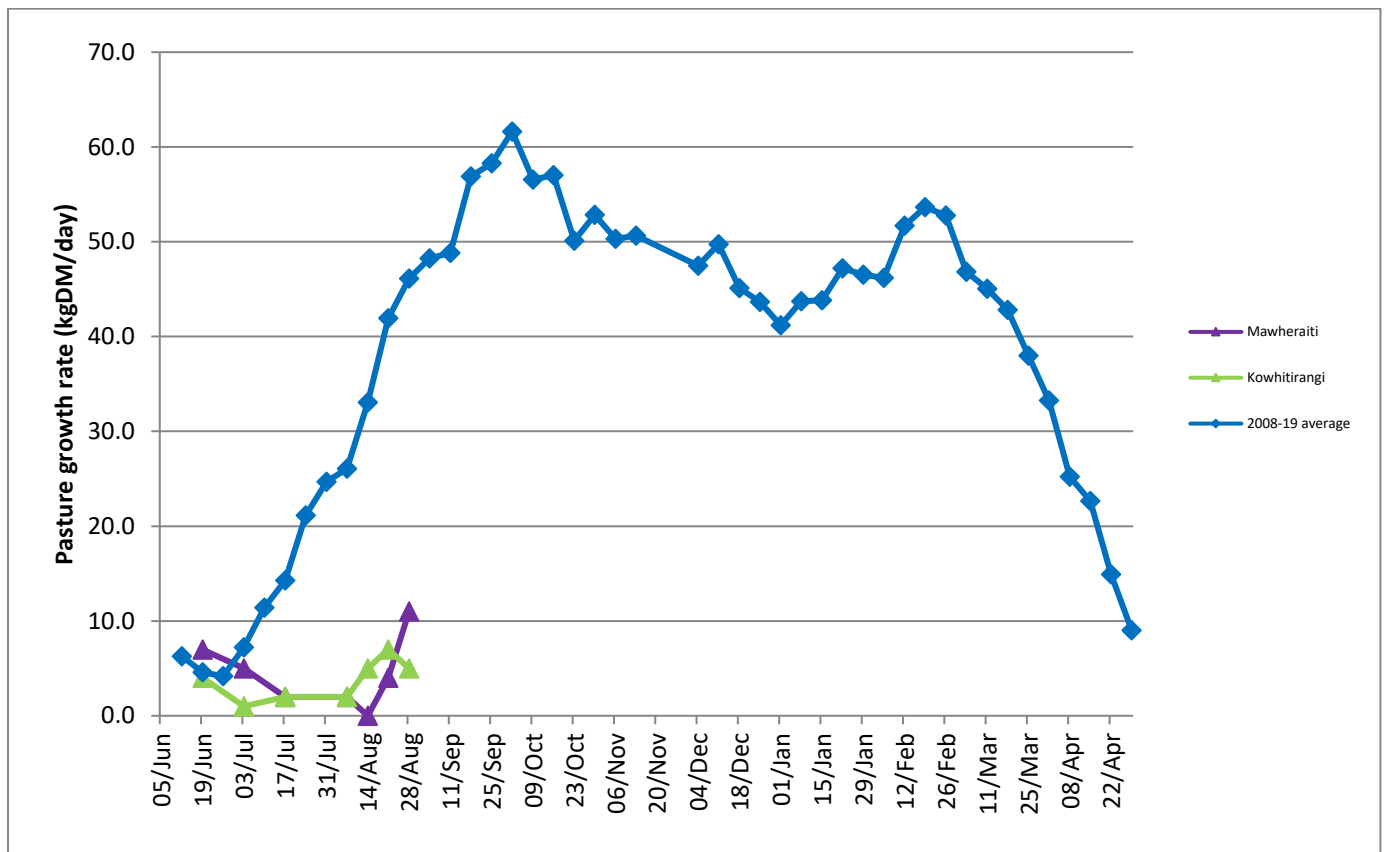
To learn more about critical source areas visit <https://www.dairynz.co.nz/environment/land-management/critical-source-areas/>

Farm Summary

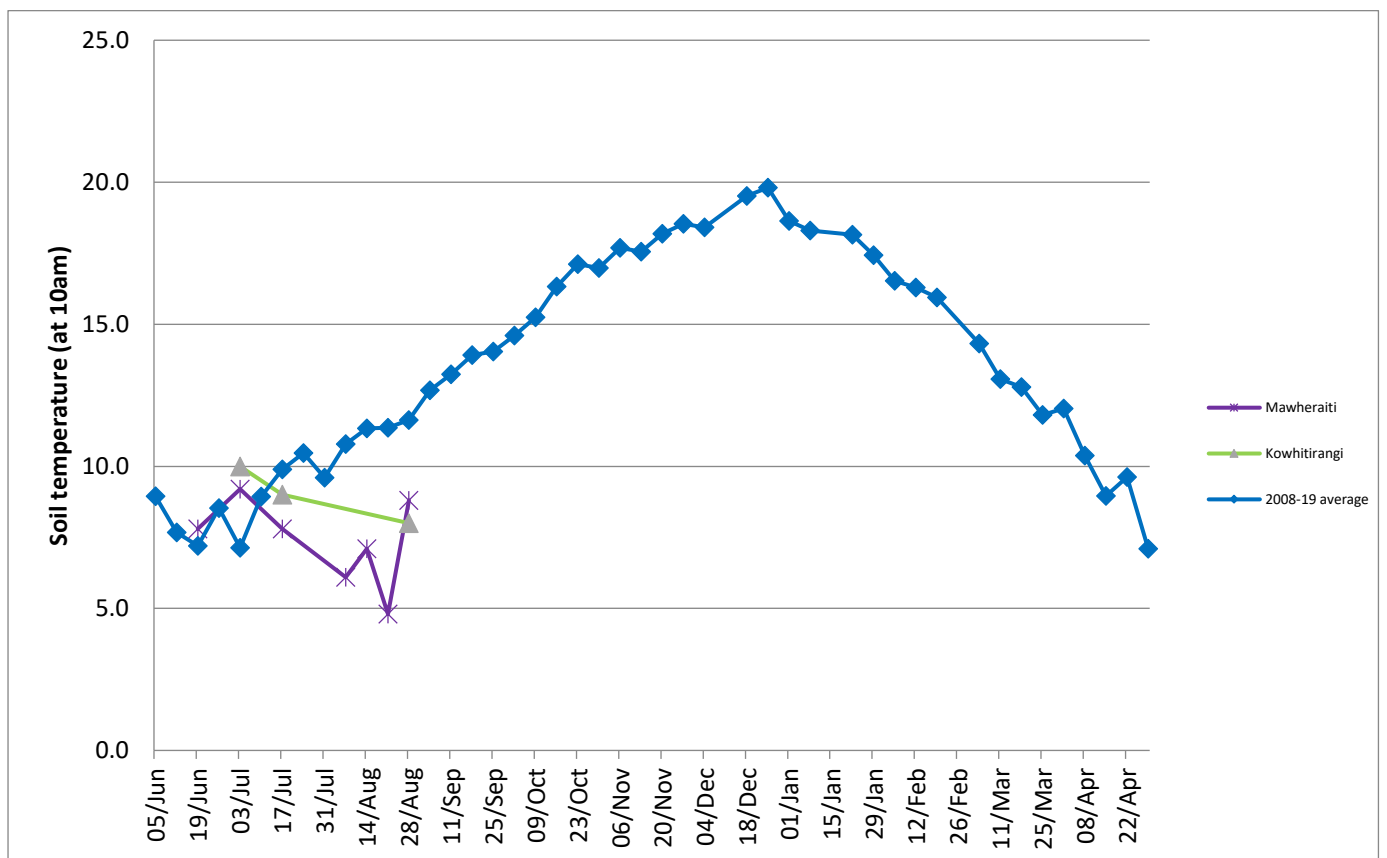
	Mawheraiti	Kowhitirangi
Average cover (kg DM/ha)	2401	1864
APC (3 July)	2444	1894
Rotation length (days)		
Stocking rate		
Percentage in milk	54	65
Milksolids kg/cow	1.14	1.49
Milksolids kg/ha	1.5	1.8
MS/cow (season to date)	7	8
MS/ha (season to date)	16	17
N (kg/ha) year to date	0	30
Current N application rate kg N/ha	-	-
	15 July	17 July
DM%	12.7	14.3
Pasture ME	13.0	12.4
Pasture NDF	38.4	43.1
Pasture CP	30.2	24.3
Target Intake (kg DM/cow/d)	18	
Supplement (kg/cow/day)	10	3
Soil temperature (°C)	8.8	8
Growth Rate (kg DM/day)	11	5
Rainfall	45	88
Conditions for farmwalk	Fine...just	Beautiful, warm, sunny day

NB: pasture quality data are for 1 sample collected from each farm

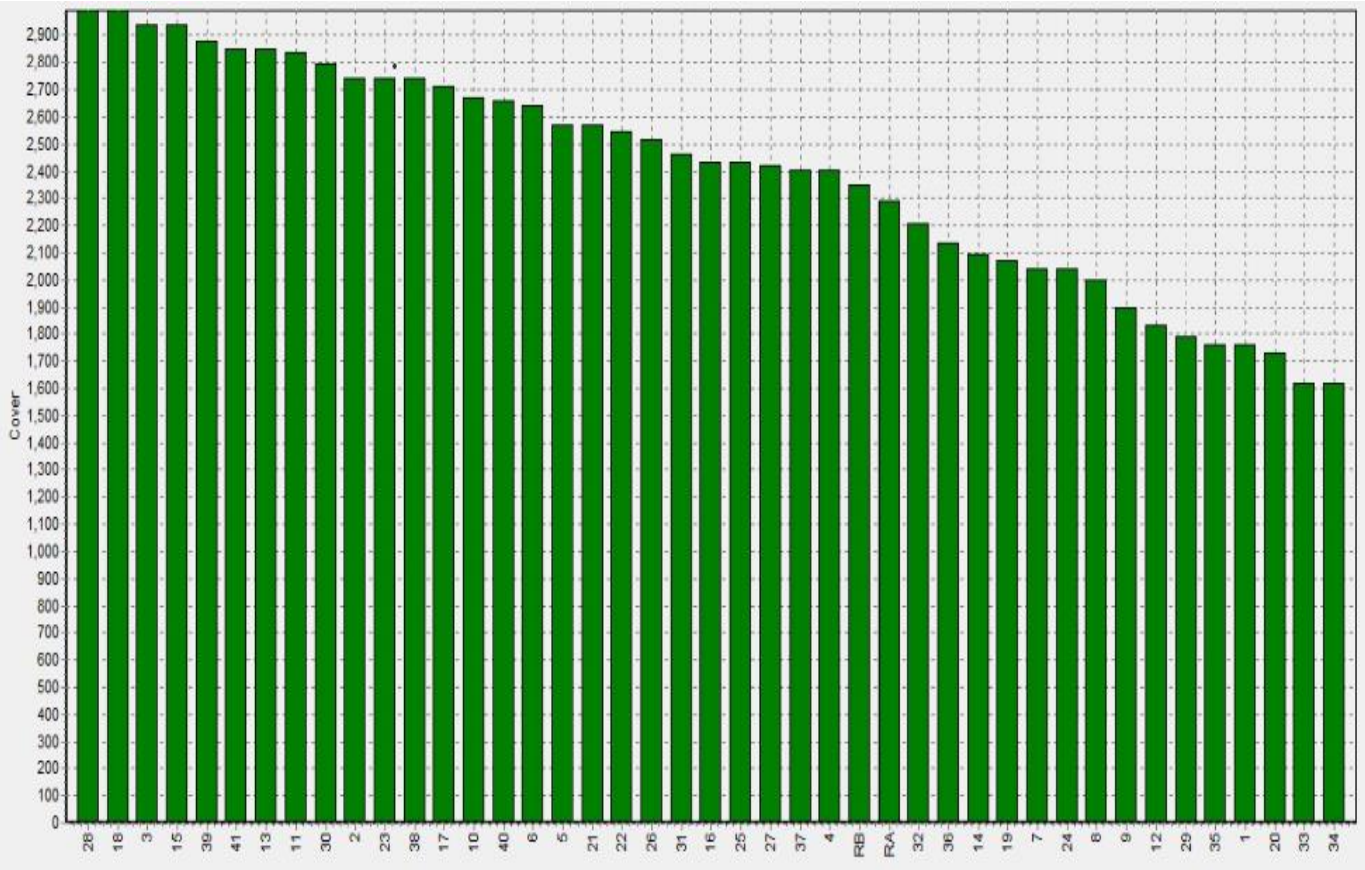
Weekly Pasture Growth Rates



Weekly Soil Temperature



Mawheraiti



Kowhitirangi

