

Westland Monitor Farm Project

Weekly Update as at week ending Wednesday 29th April 2020

CO Comment

Cooler growing conditions will bring a corresponding slowing in pasture growth rates. Carefully consider the urge to capture those last few kilograms of milksolids this season, especially given the short supply of baleage/silage supplement available to purchase and the more marginal economics of using imported feed to extend lactation this season.

The supplement price calculator is a good tool to use to assess the economics of supplement;

<https://www.dairynz.co.nz/feed/supplements/supplement-price-calculator/>

Be careful, do your homework and make sure you have the feed on hand to achieve any extra milkings without compromising the farm setup for next season.

Current production levels are unlikely to meet the cost of the extra feed if it needs to be purchased to replace feed required for winter and early spring. Stretching your feed supply too thin will be at the cost of cow condition or pasture cover heading into winter. The focus needs to be on setting the farm up adequately for next season – check your feed budget to keep you on track, whatever decision you end up making.

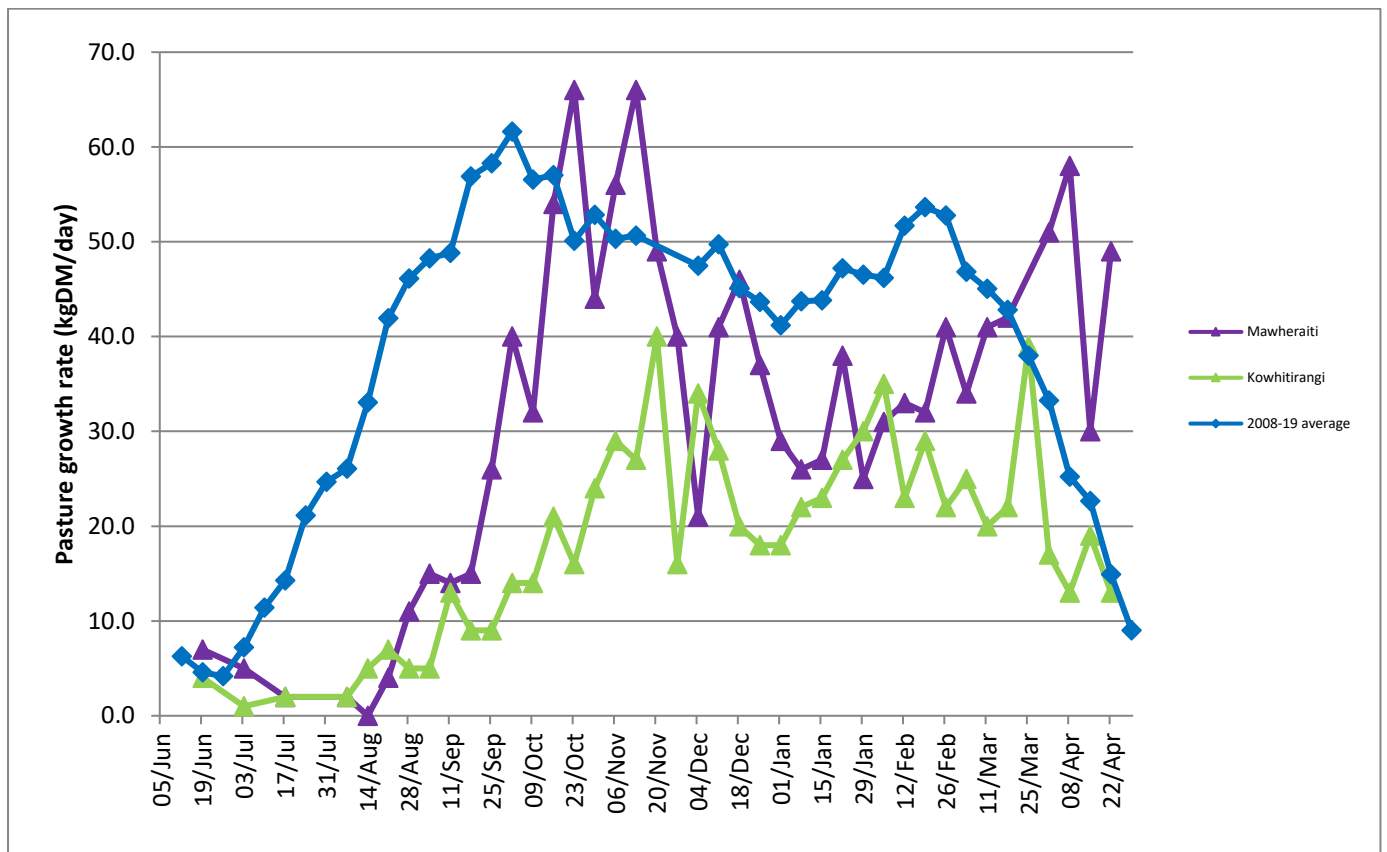
Feed budget templates can be found at <https://www.dairynz.co.nz/feed/pasture-management/assessing-farm-performance/feed-budgets/>

Farm Summary

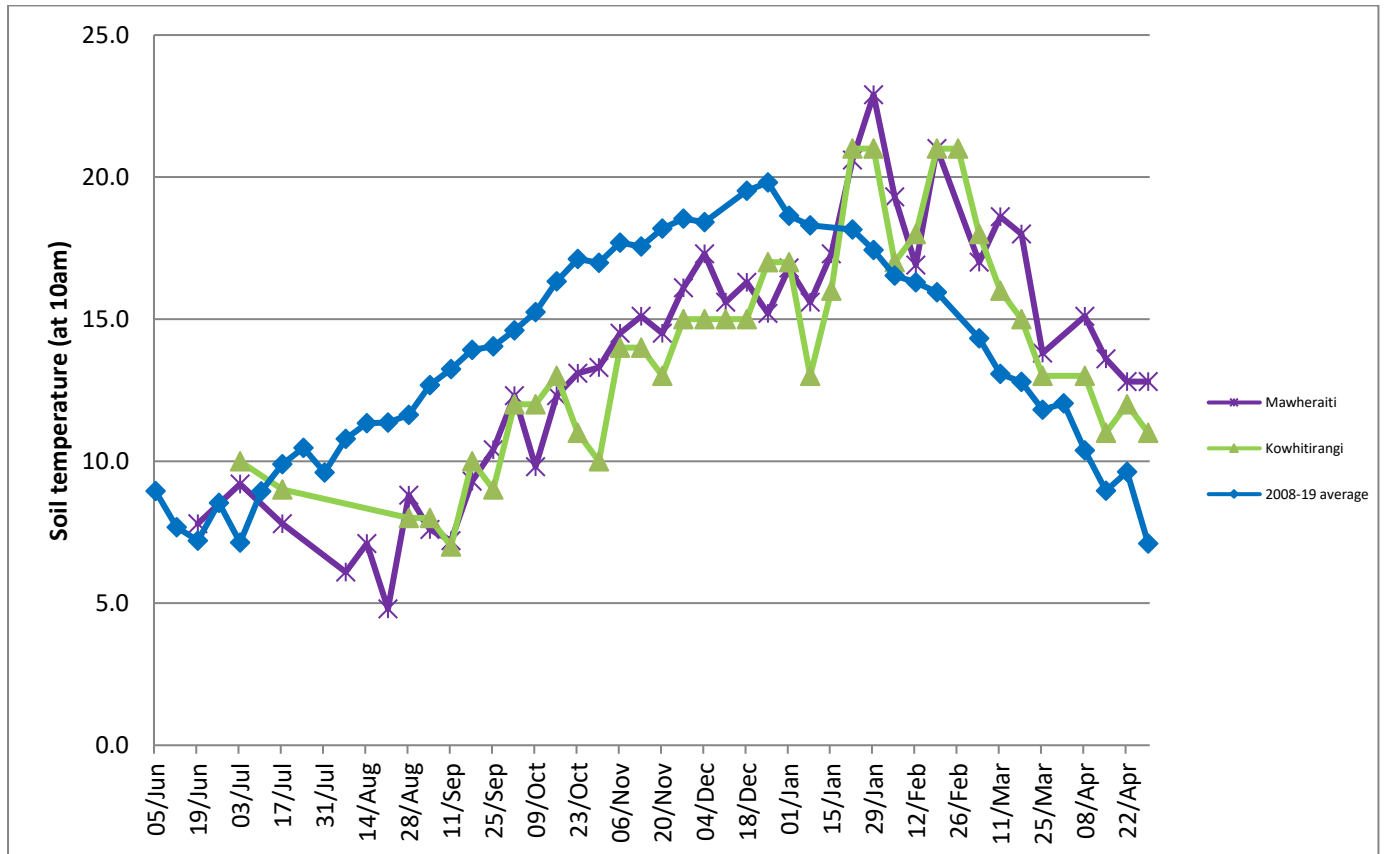
	Mawheraiti	Kowhitirangi
Average cover (kg DM/ha)	2720	1831
APC (22 April)	2635	1913
Rotation length (days)	29	29
Stocking rate	2.2	2.3
Percentage in milk	100	100
Milksolids kg/cow	1.48	1.55
Milksolids kg/ha	3.3	3.2
MS/cow (season to date)	387	434
MS/ha (season to date)	971	866
N (kg/ha) year to date	245	257
Current N application rate kg N/ha	25	25
	2 Mar	4 Mar
DM%	11.4	11.6
Pasture ME	11.5	11.9
Pasture NDF	48.4	45.0
Pasture CP	28.5	29.5
Target Intake (kg DM/cow/d)	17	17
Supplement (kg/cow/day)	4.1	6
Soil temperature (°C)	12.8	11
Growth Rate (kg DM/day)	49	13
Rainfall	35	65
Conditions for farmwalk	-	Beautiful, fine day

NB: pasture quality data are for 1 sample collected from each farm

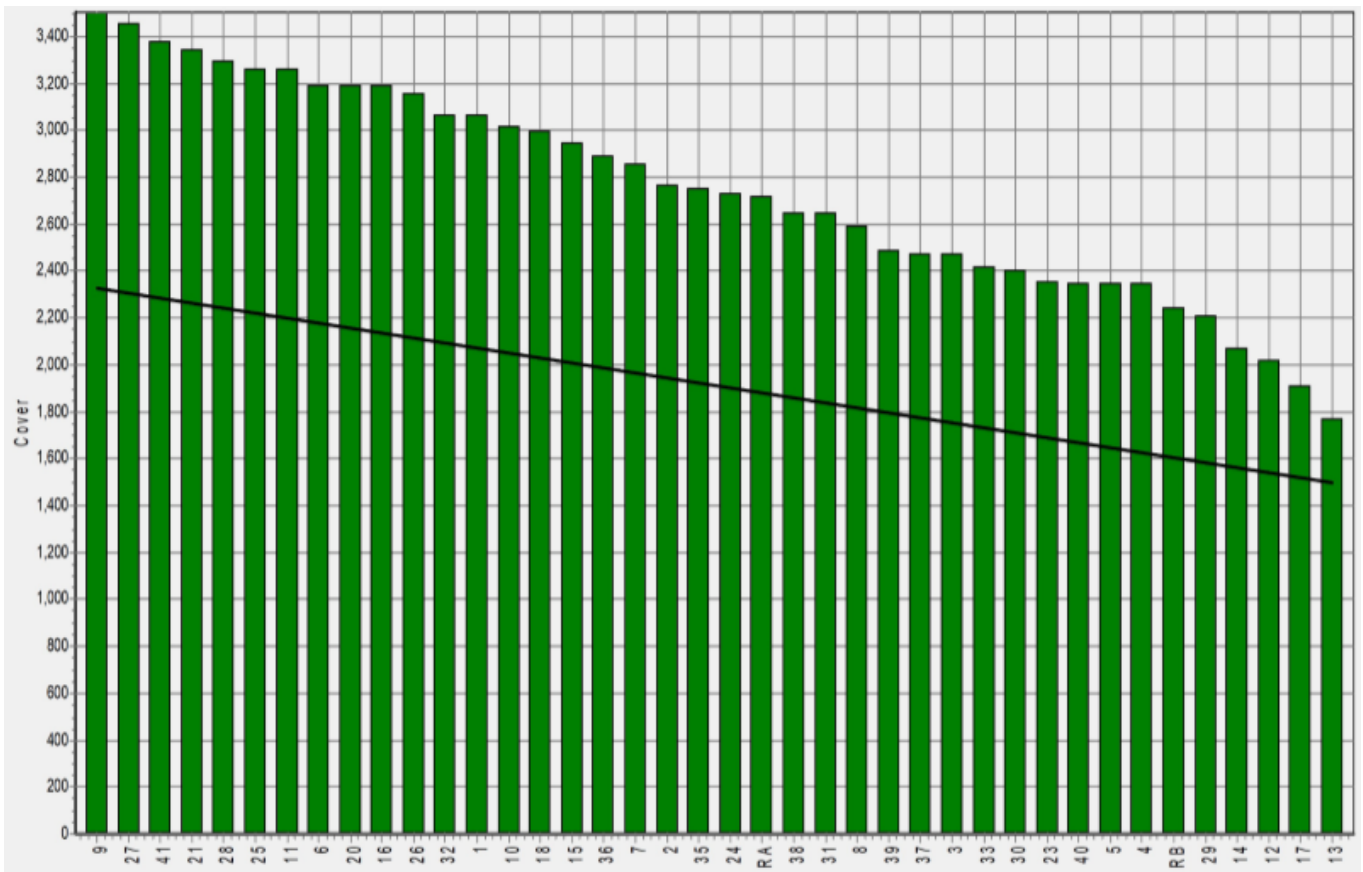
Weekly Pasture Growth Rates



Weekly Soil Temperature



Mawheraiti



Kowhitirangi

