

# Westland Monitor Farm Project

Weekly Update as at week ending Wednesday 30<sup>th</sup> October 2019

## CO Comment

The spring boost is still very much lagging for the entire West Coast. The warm sunny days are dotted few and far between by many a day of cloud or wet, cold showers and snow passing through weekly is holding back the spring flush of grass growth. This is also affecting cow condition and cows cycling with pasture covers lower than typical for this time of year and being low in feed value.

Farmers are still battling the elements trying to get winter crop paddocks worked and regressed and have the pressure on them with time coming soon to take out summer crop paddocks followed by spraying out for next year's winter crop area also.

Mating is kicking off this week or next for most farmers so ensure herds are tail painted well and often or if using mating aids that they fixed securely to the animals. Observing cows on heat in the paddock before gathering them up for milking is a good way to recognise cows on heat to be mated. If Once a Day milking, go out in the later afternoon for half an hour and just observe cow activity, recognising the groups bulling. Record all cows in their bulling groups and observe as these cows will be cows on heat, coming on heat and those immediately past mated.

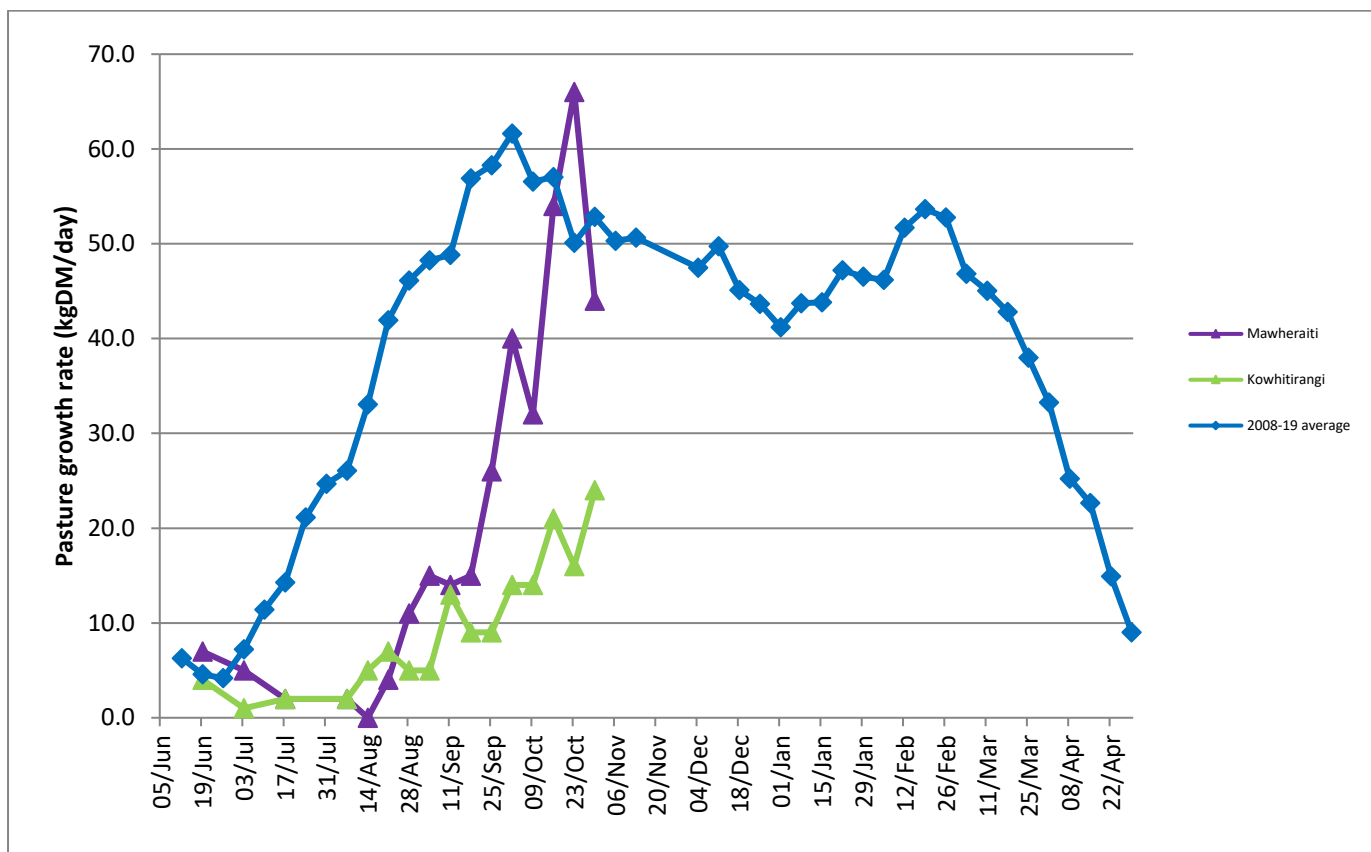
Industry target submission rates to aim for are Week 1 – 30%, Week 2 – 60%, Week 3 – 90%. Along with a target of 78% for the 6 Week Incalf Rate.

## Farm Summary

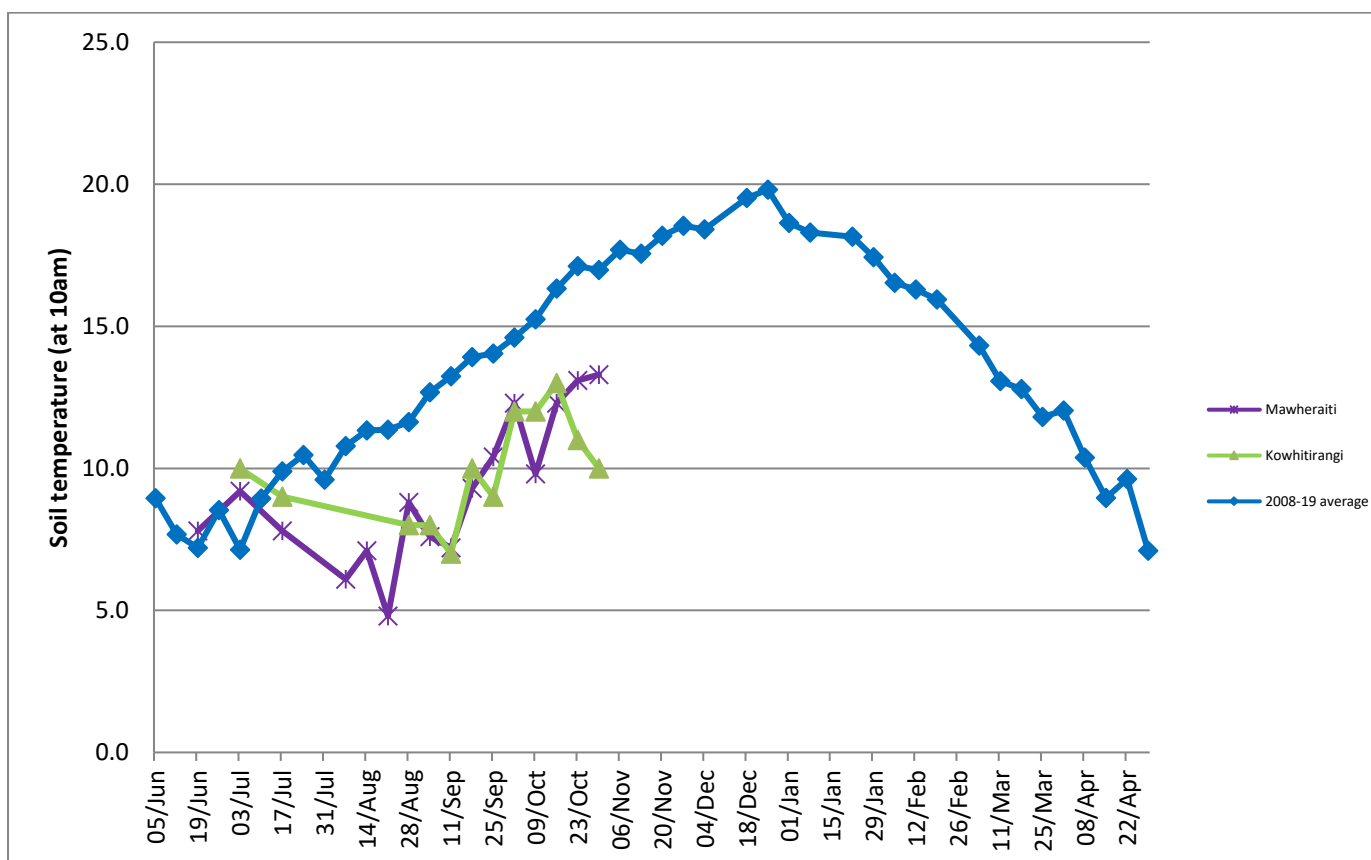
|                                    | Mawheraiti                    | Kowhitirangi           |
|------------------------------------|-------------------------------|------------------------|
| Average cover (kg DM/ha)           | 2299                          | 1899                   |
| APC (3 July)                       | 2302                          | 1887                   |
| Rotation length (days)             | 23                            | 24                     |
| Stocking rate                      | 2.5                           | 2.4                    |
| Percentage in milk                 | 100                           | 100                    |
| Milksolids kg/cow                  | 2.07                          | 2.00                   |
| Milksolids kg/ha                   | 5.2                           | 4.3                    |
| MS/cow (season to date)            | 106                           | 127                    |
| MS/ha (season to date)             | 265                           | 253                    |
|                                    |                               |                        |
| N (kg/ha) year to date             | 51                            | 51                     |
| Current N application rate kg N/ha | -                             | -                      |
|                                    |                               |                        |
|                                    | 2 Sept                        | 9 Oct                  |
| DM%                                | 15.5                          | 15.0                   |
| Pasture ME                         | 12.3                          | 12.2                   |
| Pasture NDF                        | 48.3                          | 45.2                   |
| Pasture CP                         | 24.0                          | 25.6                   |
|                                    |                               |                        |
| Target Intake (kg DM/cow/d)        | 19                            | 17                     |
| Supplement (kg/cow/day)            | 1                             | 3                      |
|                                    |                               |                        |
| Soil temperature (°C)              | 13.3                          | 10                     |
| Growth Rate (kg DM/day)            | 44                            | 24                     |
| Rainfall                           | 58                            | 33                     |
| Conditions for farmwalk            | Fine... just. Farm really wet | Raining, farm very wet |

NB: pasture quality data are for 1 sample collected from each farm

## Weekly Pasture Growth Rates



## Weekly Soil Temperature



# Mawheraiti



# Kowhitirangi

