

Westland Monitor Farm Project

Weekly Update as at week ending Wednesday 4th December 2019

CO Comment

It is officially summer! Although you wouldn't think it with a deluge of rain the West Coast has had over the past week. When the sun does come back, it is important to think about minimising heat stress to minimise the impact on productivity and protect the comfort of our cows.

Make sure your cows always have access to water and that flow rates are high enough that troughs don't run dry.

Ensure summer pasture is of high quality. Feed with a high fibre content can increase the heat of fermentation in the rumen, increasing the heat load on the cow (e.g. non-irrigated summer pasture). Provide supplementary feed at night when it is cooler.

Cows need shade, ideally 5m² to avoid competition and be comfortable. Adjusting milking times (later in the day or OAD) will reduce time spent in unshaded yards.

Use the [temperature humidity calculator](#) to determine the effects of the weather on your cows. During the week of the 23-29 Nov, Westport had 3 days of the week that were too hot for the cows to be comfortable (THI >64) and 1 day when the temperatures were high enough to affect milksolids production (THI >68).

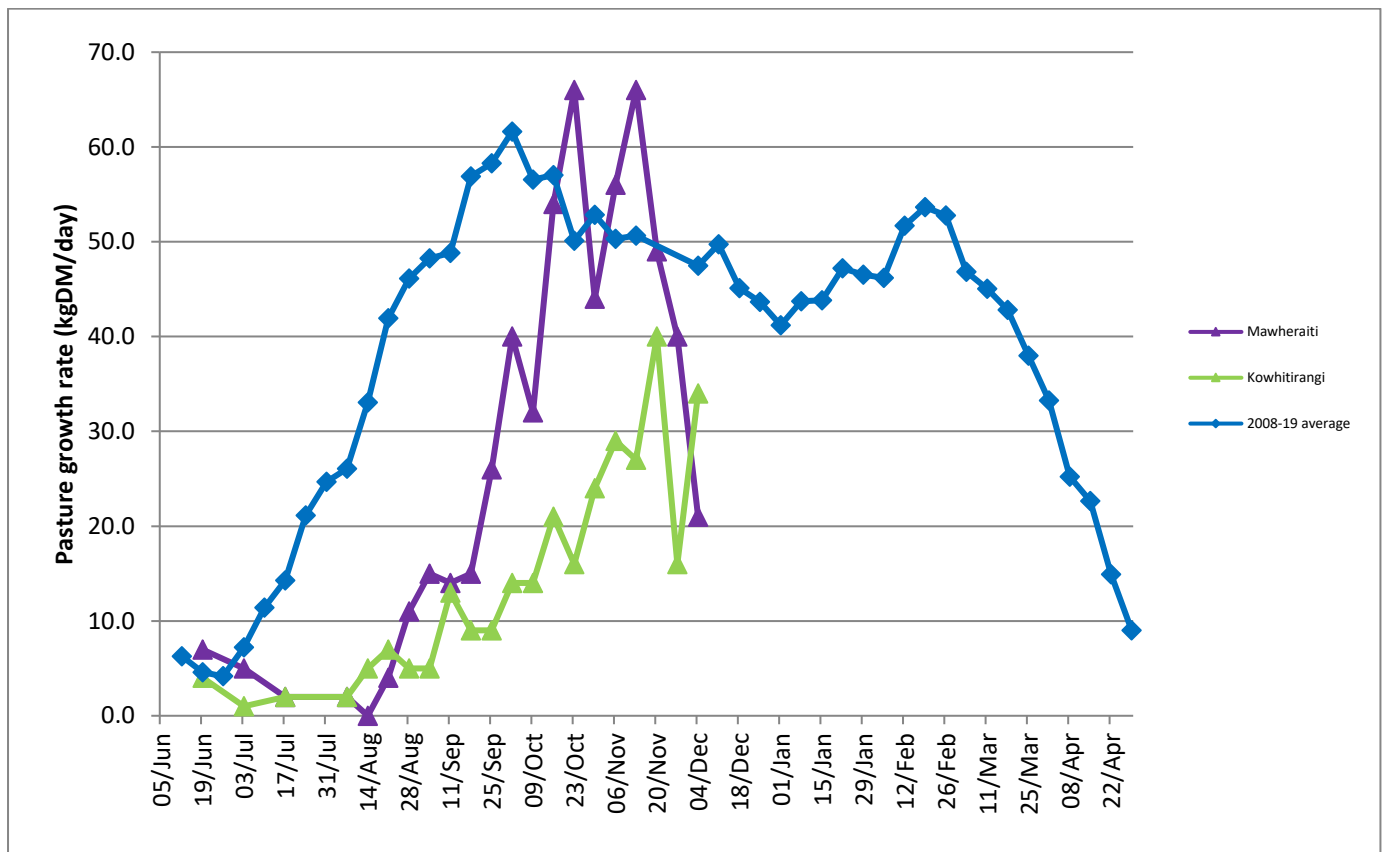
We are inviting you this week to join DairyNZ directors and your local DairyNZ team to discuss the future of dairying. Get an overview of the latest local and national insights and other breakthroughs that will help the dairy sector meet future challenges. <https://www.dairynz.co.nz/about-us/how-we-operate/offload-reload-refresh-events/>

Farm Summary

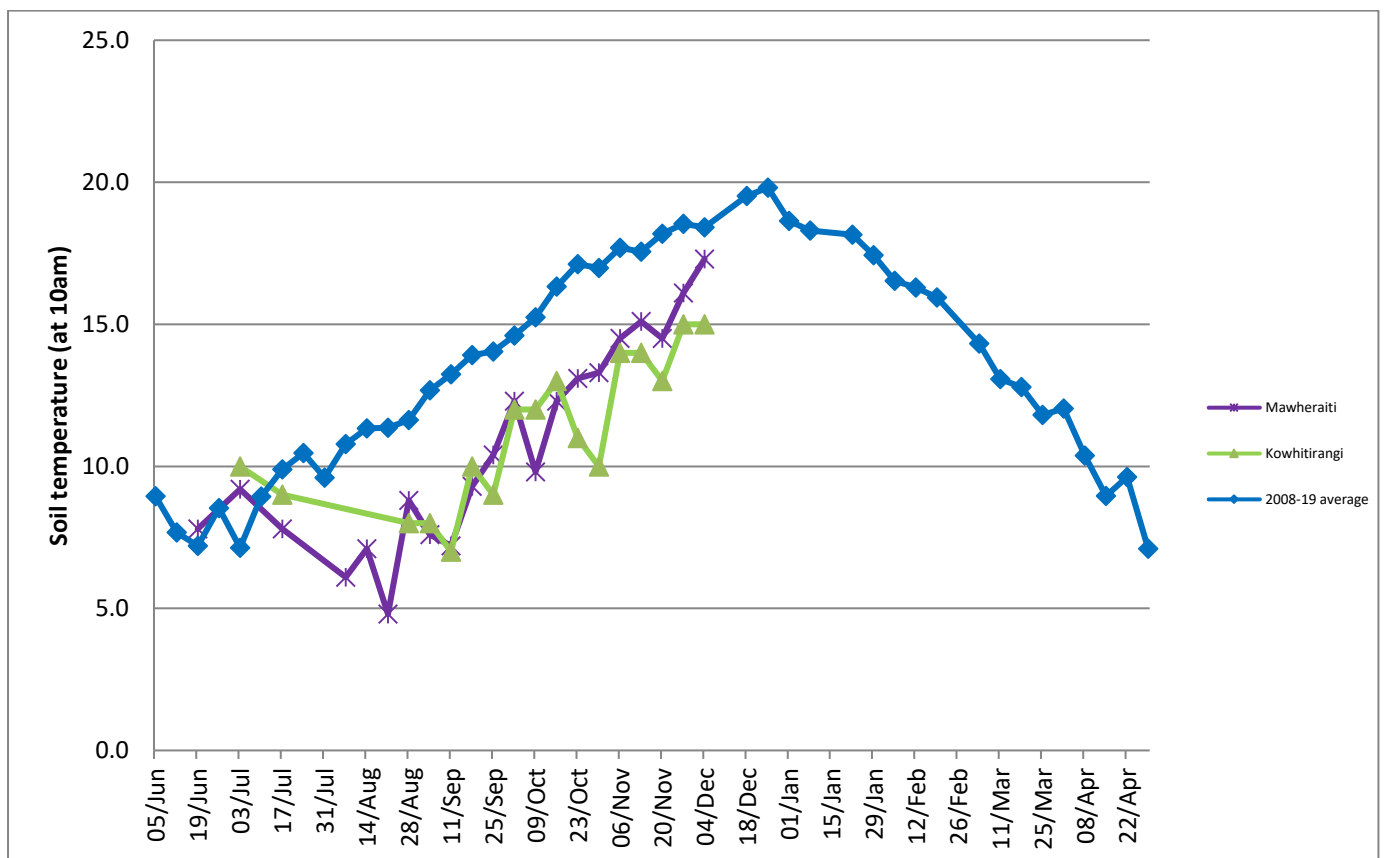
	Mawheraiti	Kowhitirangi
Average cover (kg DM/ha)	2204	1983
<i>APC (3 July)</i>	<i>2159</i>	<i>1934</i>
Rotation length (days)	26	26
Stocking rate	2.5	2.3
Percentage in milk	100	100
Milksolids kg/cow	1.73	1.73
Milksolids kg/ha	4.3	3.7
MS/cow (season to date)	171	196
MS/ha (season to date)	429	390
N (kg/ha) year to date	86	115
Current N application rate kg N/ha	24	-
	4 Nov	6 Nov
DM%	15.4	13.5
Pasture ME	12.2	12.5
Pasture NDF	46.6	43.8
Pasture CP	16.3	23.7
Target Intake (kg DM/cow/d)	19	18
Supplement (kg/cow/day)	0.3	3.6
Soil temperature (°C)	17.3	15
Growth Rate (kg DM/day)	21	34
Rainfall	11	39
Conditions for farmwalk	Rain	Heavy rain, strong wind

NB: pasture quality data are for 1 sample collected from each farm

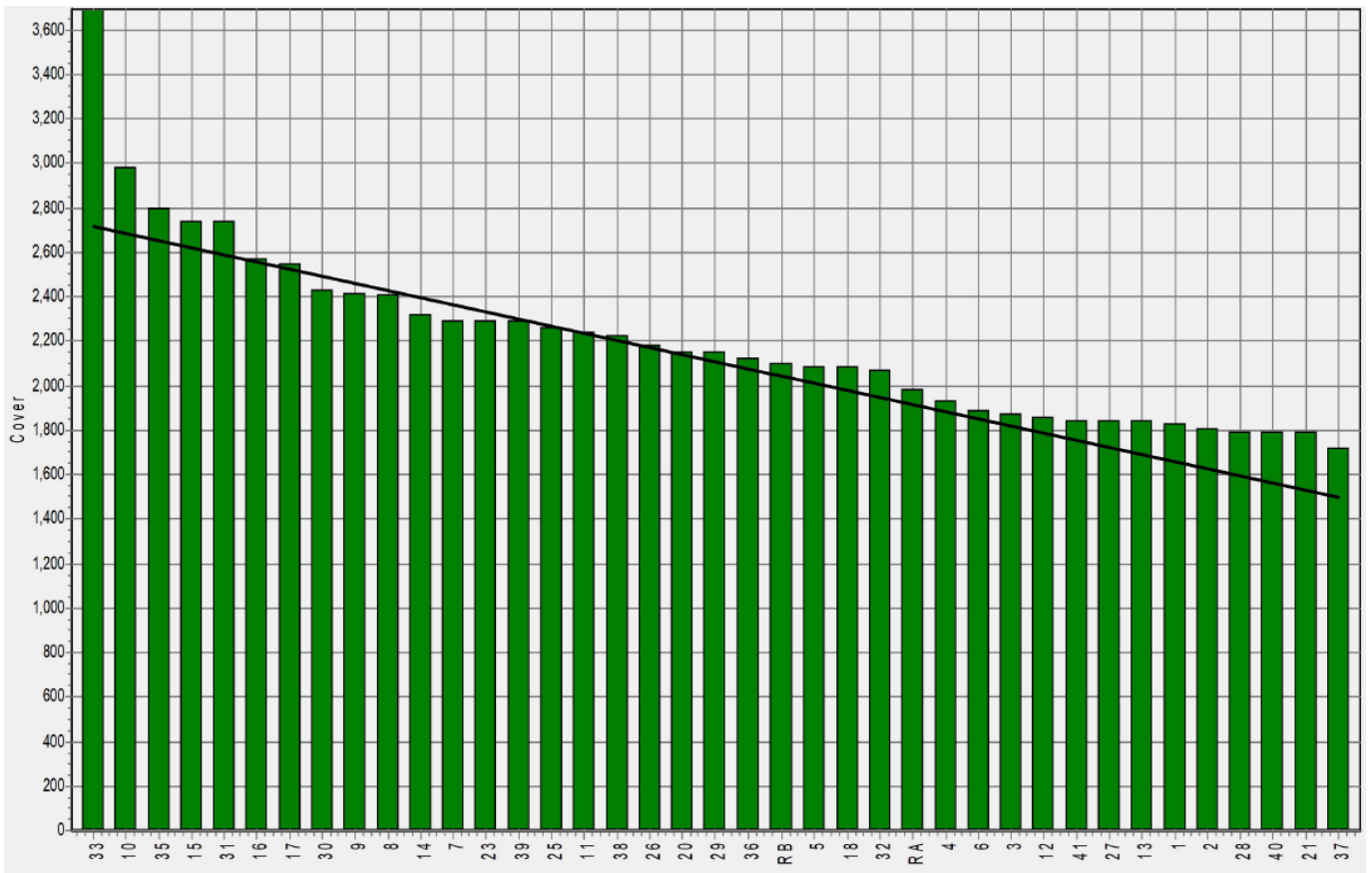
Weekly Pasture Growth Rates



Weekly Soil Temperature



Mawheraiti



Kowhitirangi

