

Westland Monitor Farm Project

Weekly Update as at week ending Wednesday 4th March 2020

CO Comment

Last week DairyNZ and Beef and Lamb collaborated to bring two workshops to Whataroa and Ikamatua.

The focus of these days was around feed budgeting and wintering on crop.

Wintering has come under the spotlight recently and it is important that we set ourselves up well to mitigate any potential welfare and/or environmental issues that may come from running a wintering system.

Protecting our soil is important in a crop based wintering system. After heavy rain crop paddocks can suffer sediment loss. By protecting critical source areas (CSA's) and implementing strategic grazing practices this can be mitigated.

In the P21 Telford study the reduction in sediment loss was 90% and the reduction in P loss was 83%. By thinking about ways to graze your crop paddock now, you can make a plan and communicate it with staff so everyone is in agreement on how managing the crop paddock will be undertaken come winter.

DairyNZ recommends developing your own [wintering standard operating procedure](#) to communicate the plan with staff.

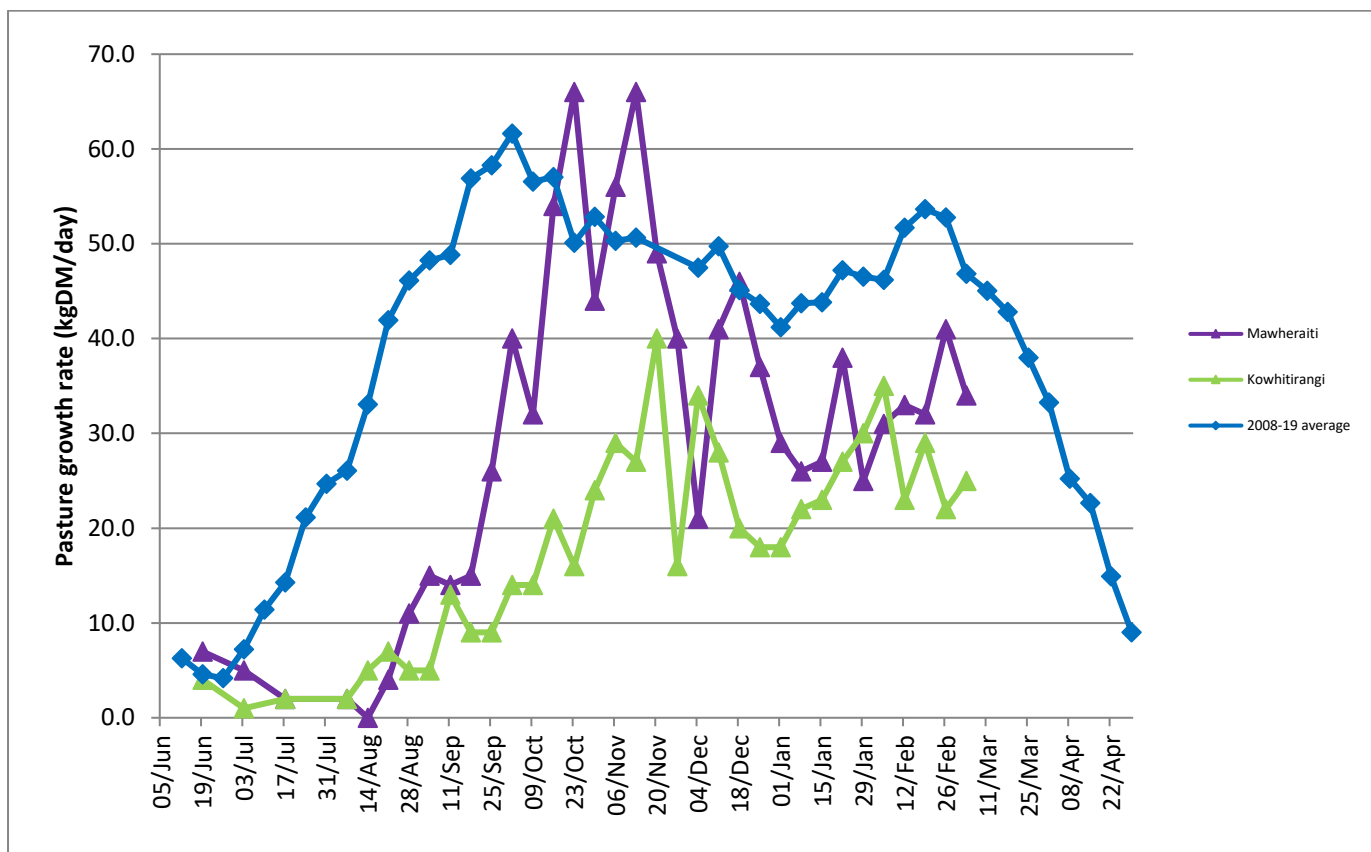
For ideas on how to manage wintering, from grazing crop paddocks through to feeding animals visit <https://www.dairynz.co.nz/feed/crops/wintering-cows-on-crops/grazing-the-winter-crop/> and download some of the valuable resources available on the subject.

Farm Summary

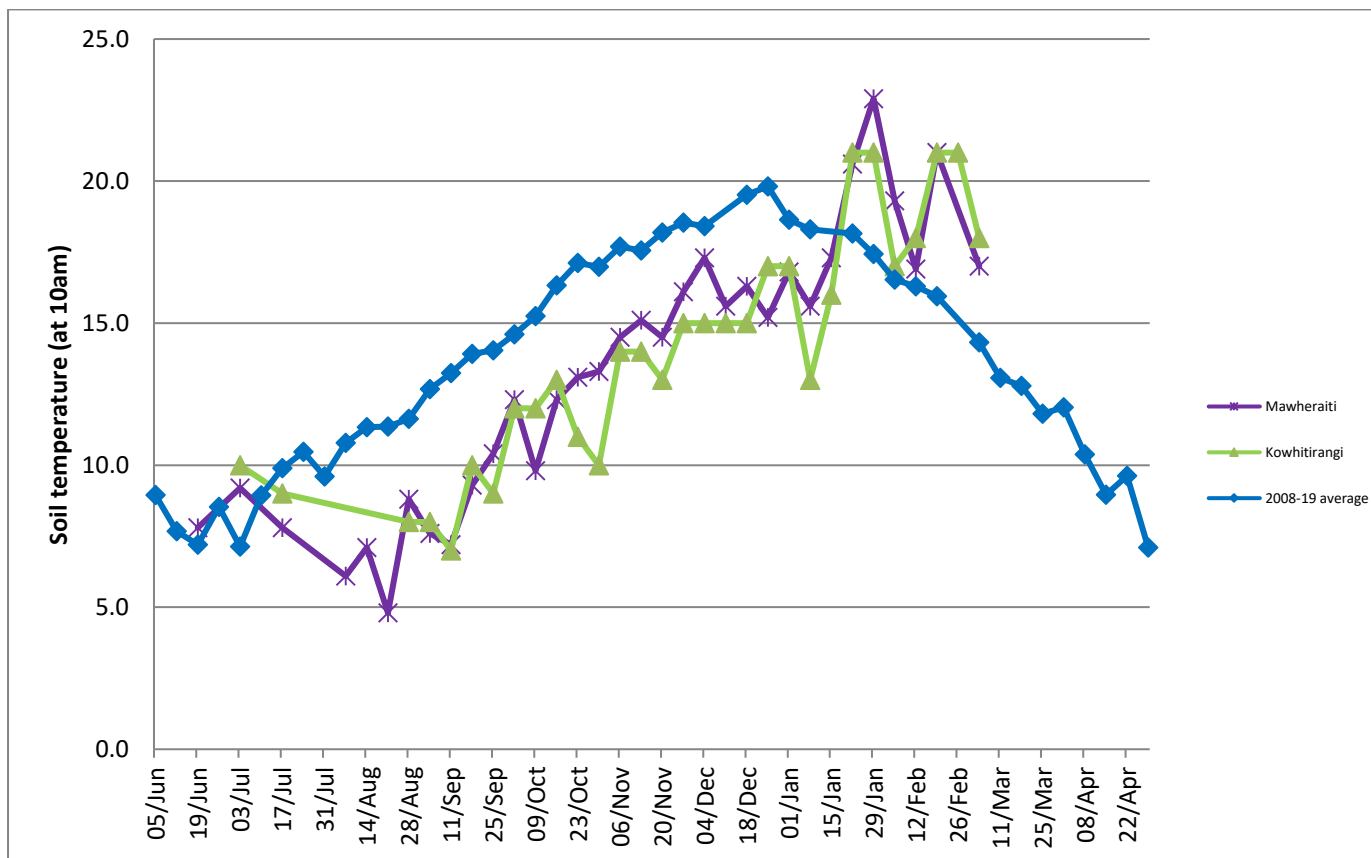
	Mawheraiti	Kowhitirangi
Average cover (kg DM/ha)	2141	2000
APC (26 February)	2143	2042
Rotation length (days)	28	25
Stocking rate	2.3	2.3
Percentage in milk	100	100
Milksolids kg/cow	1.50	1.54
Milksolids kg/ha	3.5	3.2
MS/cow (season to date)	311	352
MS/ha (season to date)	779	702
N (kg/ha) year to date	185	175
Current N application rate kg N/ha	33	-
	3 Feb	5 Feb
DM%	13.2	9.9
Pasture ME	11.6	11.1
Pasture NDF	47.1	53.1
Pasture CP	25.0	24.8
Target Intake (kg DM/cow/d)	17	18
Supplement (kg/cow/day)	0	1
Soil temperature (°C)	18	17
Growth Rate (kg DM/day)	34	25
Rainfall	21	160
Conditions for farmwalk	Fine	Lots of rain yesterday, farm very wet, a few paddocks flooded

NB: pasture quality data are for 1 sample collected from each farm

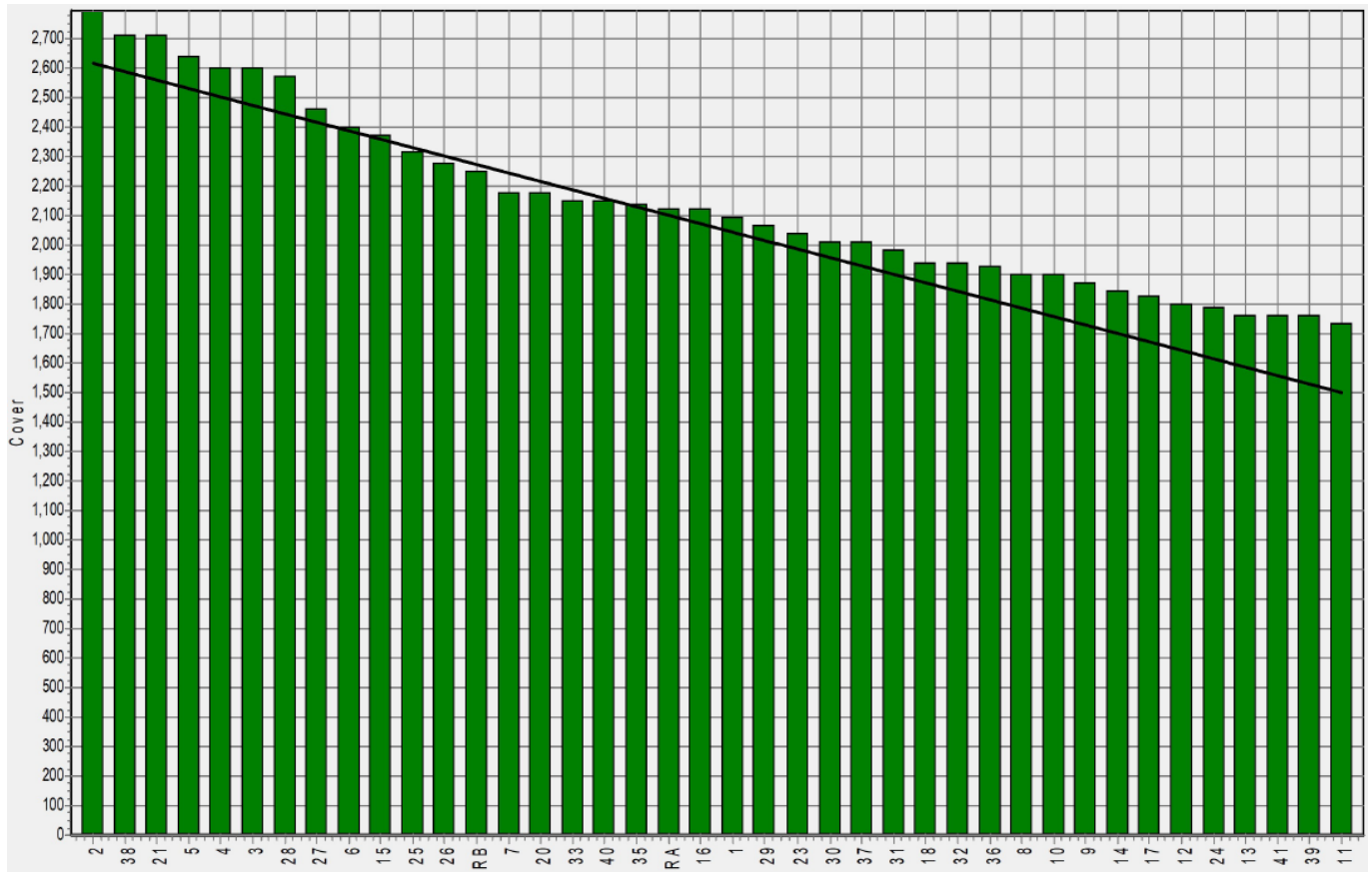
Weekly Pasture Growth Rates



Weekly Soil Temperature



Mawheraiti



Kowhitirangi

