

Westland Monitor Farm Project

Weekly Update as at week ending Wednesday 5th February 2020

CO Comment

This week has seen some welcome rain for Northern parts of the West Coast and for the South perhaps not so welcome.

Growth rates are still not typically where they should/need to be for this time of year. Most have accommodated this by adjusting their farm systems whether it be through reduced stocking rates or higher inputs.

Knowledge is power in that department so spend time identifying any potential culls (aged pregnancy testing is a good tool for this) so that there is a list ready to go when the feed budget/wedge indicates the need.

Buller Vets has analysed a few pasture samples for facial eczema spores. Whilst levels were mostly low, there were a couple of tests that indicated there are spores present.

In lactating cows facial eczema can decrease production and studies show a drop of 0.6 ms/cow over a 30 day period of exposure.

Don't forget about your youngstock either. Facial eczema can have a dramatic effect on them too. Studies suggested decreased liveweights, increased length to conception and higher likelihood of not making it to their 2nd lactation once in the herd.

Remember the effects can be cumulative. Counts can be lower, but exposure over an increased period can cause as much damage as high counts over a short period.

Talk to your vet for sampling and treatment options.

A reminder that on the 19th and 20th of February we have field days at both monitor farms who kindly contribute their data for the region to view. Come along show your appreciation and support.

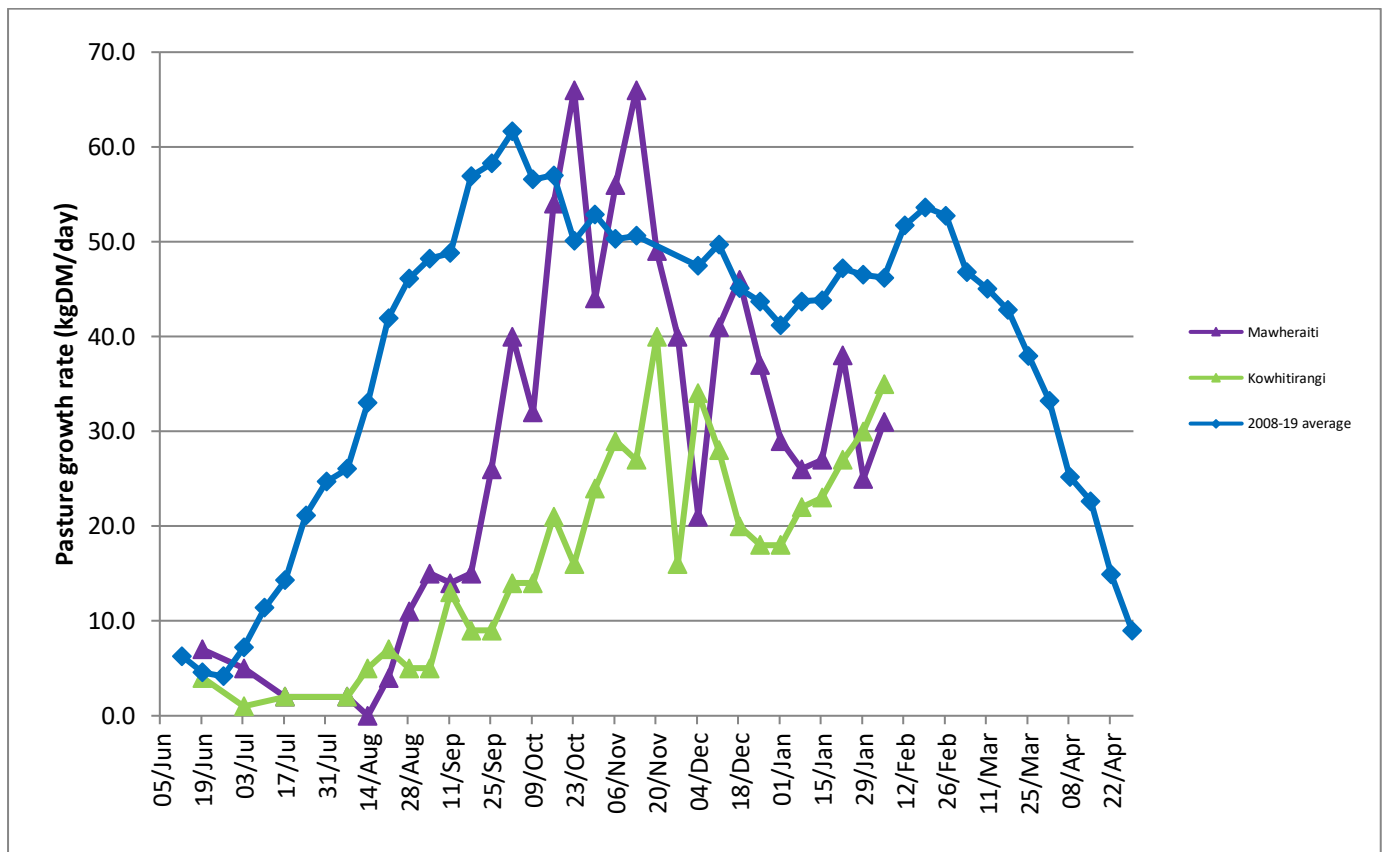
We have a couple of great guest speakers lined up who will delve into the data from these farms. Click to find out more about the [monitor farm field days and other events in the region.](#)

Farm Summary

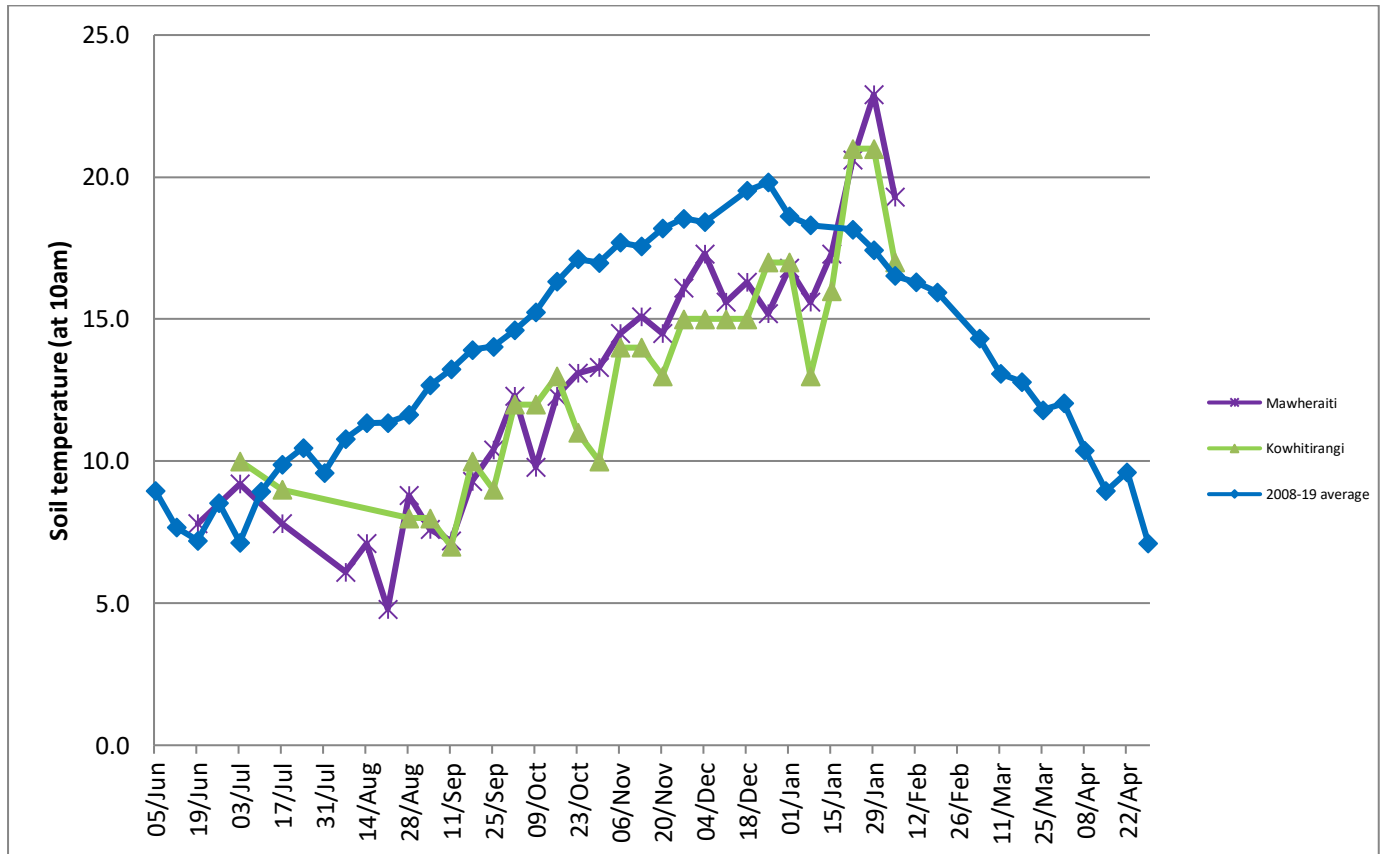
	Mawheraiti	Kowhitirangi
Average cover (kg DM/ha)	2061	2077
APC (29 January)	2047	1996
Rotation length (days)	27	28
Stocking rate	2.4	2.3
Percentage in milk	100	100
Milksolids kg/cow	1.62	1.58
Milksolids kg/ha	3.9	3.3
MS/cow (season to date)	271	309
MS/ha (season to date)	681	615
N (kg/ha) year to date	146	175
Current N application rate kg N/ha	24	-
	13 Jan	15 Jan
DM%	14.7	19.5
Pasture ME	11.9	11.2
Pasture NDF	46.9	44.7
Pasture CP	24.5	18.8
Target Intake (kg DM/cow/d)	17	18
Supplement (kg/cow/day)	0.9	2
Soil temperature (°C)	19.3	17
Growth Rate (kg DM/day)	31	35
Rainfall	13	115
Conditions for farmwalk	Hot and fine	Cool and raining, farm very wet

NB: pasture quality data are for 1 sample collected from each farm

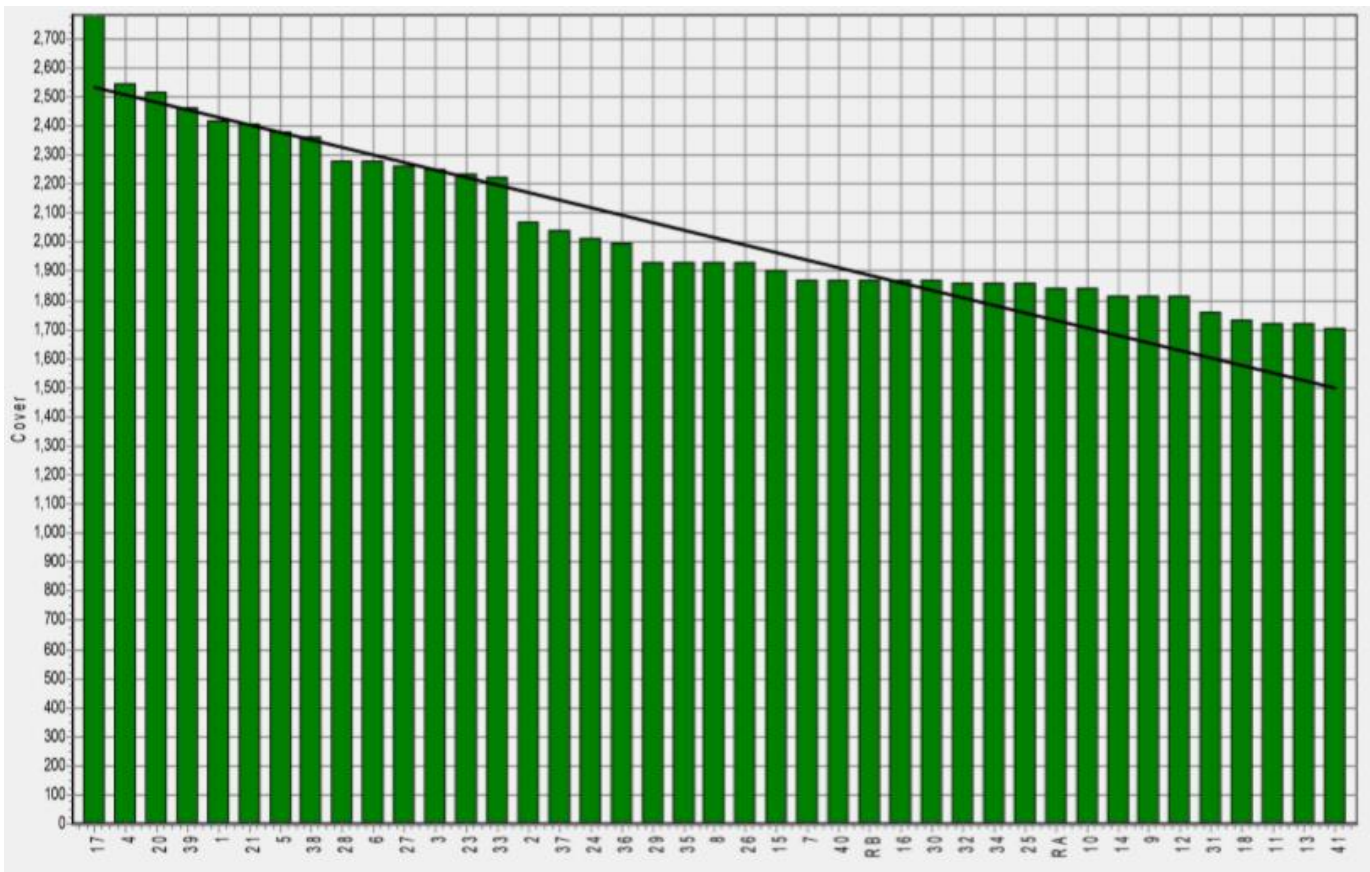
Weekly Pasture Growth Rates



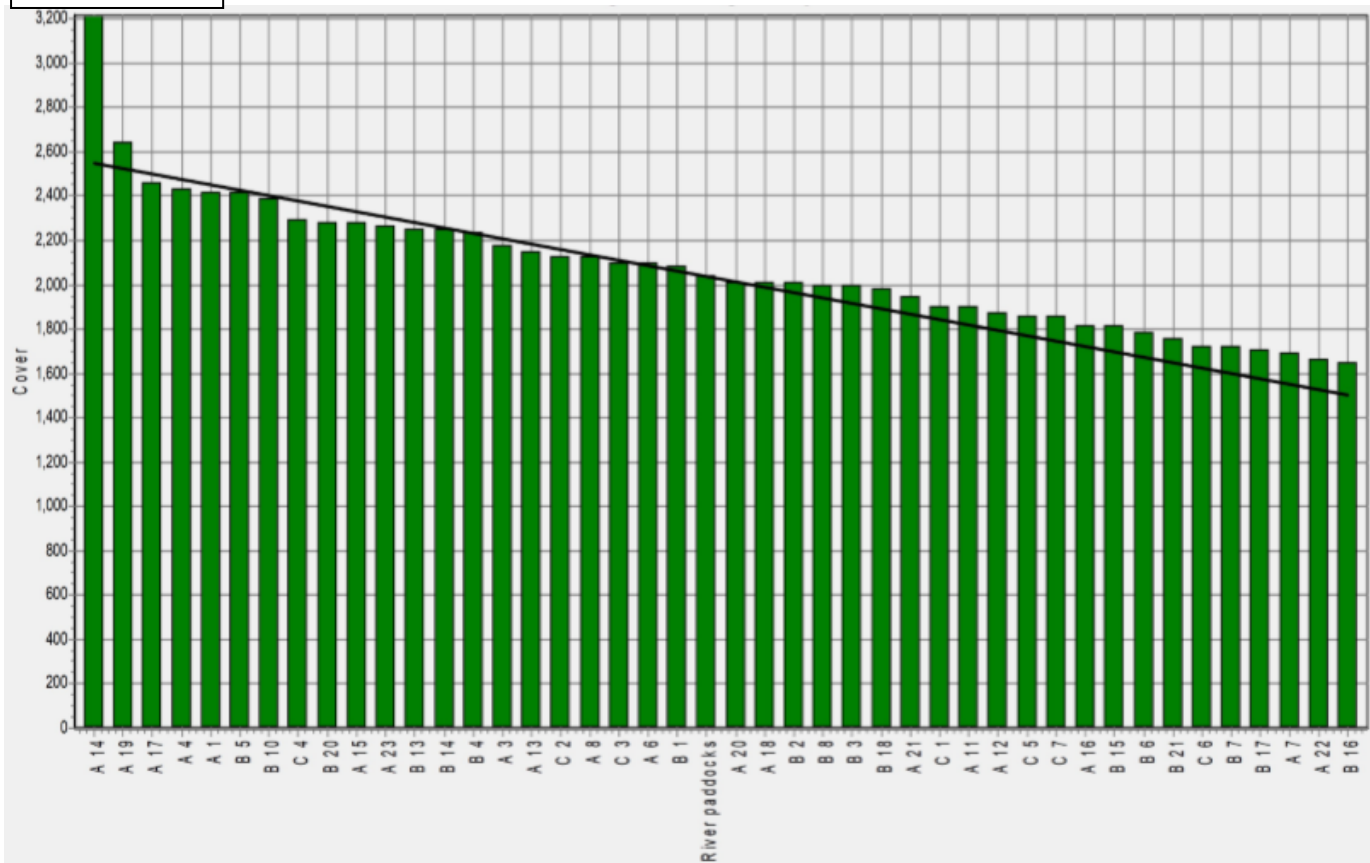
Weekly Soil Temperature



Mawheraiti



Kowhitirangi



Mawheraiti

Description	Date	RPM	% DM	% Prot	% Lipid	% ADF	% NDF	Sol Sugar	OMD %	MJME/kg
Paddock 2	15/07/19	15.4	12.7	30.2	3.8	19.2	38.4	8.5	88.8	13.0
Paddock 17	2/09/19	16.8	15.5	24.0	4.7	11.4	48.3	12.0	84.4	12.3
Paddock 2	4/11/19	13.0	15.4	16.3	3.4	22.1	46.6	16.5	83.2	12.2
Paddock 10	2/12/19	17.7	15.3	20.6	3.2	23.0	44.0	10.0	79.7	11.6
Paddock 1	13/1/19	14.4	14.7	24.5	3.5	23.3	46.9	11.7	81.3	11.9

Kowhitirangi

Description	Date	RPM	% DM	% Prot	% Lipid	% ADF	% NDF	Sol Sugar	OMD %	MJME /kg
Paddock 5b	17/07/19	13.8	14.3	24.3	3.9	18.4	43.1	14.2	85.2	12.4
Paddock 3c	4/09/19	10.8	17.3	24.0	3.5	15.7	36.1	21.1	>85	12.6
Paddock 9b	9/10/19	8.9	15.0	25.6	3.3	22.3	45.2	10.5	83.3	12.2
Paddock 15a	6/11/19	9.0	13.5	23.7	3.8	20.4	43.8	12.2	>85	12.5
Paddock 13a	4/12/19	13.3	11.5	29.4	3.2	24.5	43.3	6.4	85.0	12.4
Paddock 13b	15/1/19	10.0	19.5	18.8	3.4	24.1	44.7	13.8	76.8	11.2