

Westland Monitor Farm Project

Weekly Update as at week ending Wednesday 6th May 2020

CO Comment

With the 2019/2020 season nearing an end, it would be useful to plan a team meeting to reflect on the season, reviewing the decisions that were made, and more particularly, the reasons behind those decisions.

This season has been another variable one, so consider whether you would make the same decisions if faced with similar conditions again, and if so why or why not? Make sure the lessons learned from this season are used to make the business more robust for the future. The review team should include all the people that helped make the decisions – the team on the farm, the team at home, and the team in town – everyone worked together to get us to this point and will all have a valuable perspective on how things went.

Making some decisions now around what the trigger points will be in your business by asking questions like...

- what are you prepared to pay for supplement?
- how much supplement are you prepared to feed before you consider other options to reduce imported feed?
- what factors will influence your fertiliser applications?
- what are your timelines for financial reporting and monitoring?

These are just a few of many things you can consider to make your business run more smoothly and communicate effectively with the whole team.

There are lots of tools at <https://www.dairynz.co.nz> to help with reviewing your business.

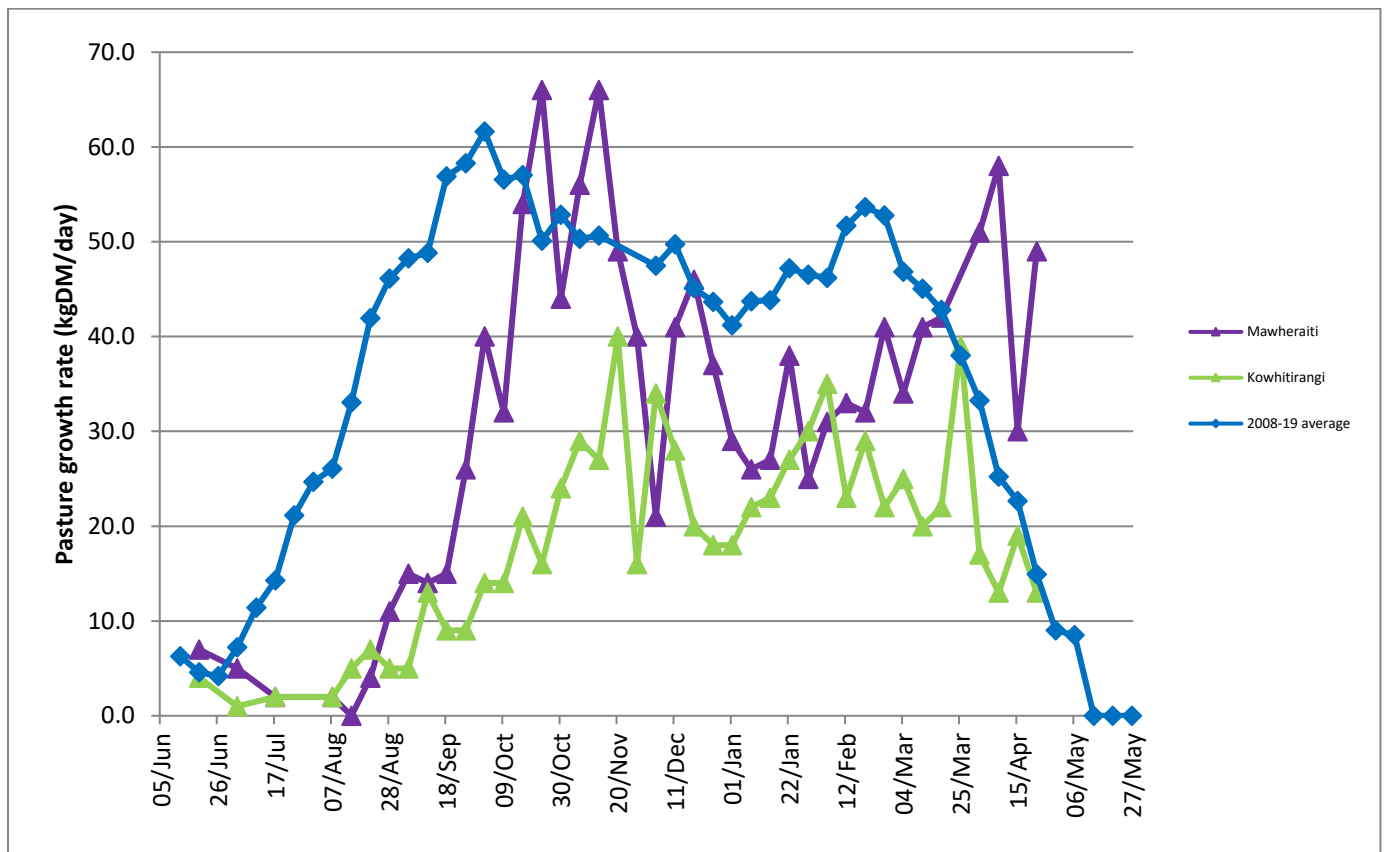
To get an understanding of where you may need to focus your attention you could start with Farm Gauge which is an interactive tool designed to highlight the strengths and opportunities within a farm business. Have a go at <https://www.dairynz.co.nz/business/business-analysis/analysis-tools/farm-gauge/>

Farm Summary

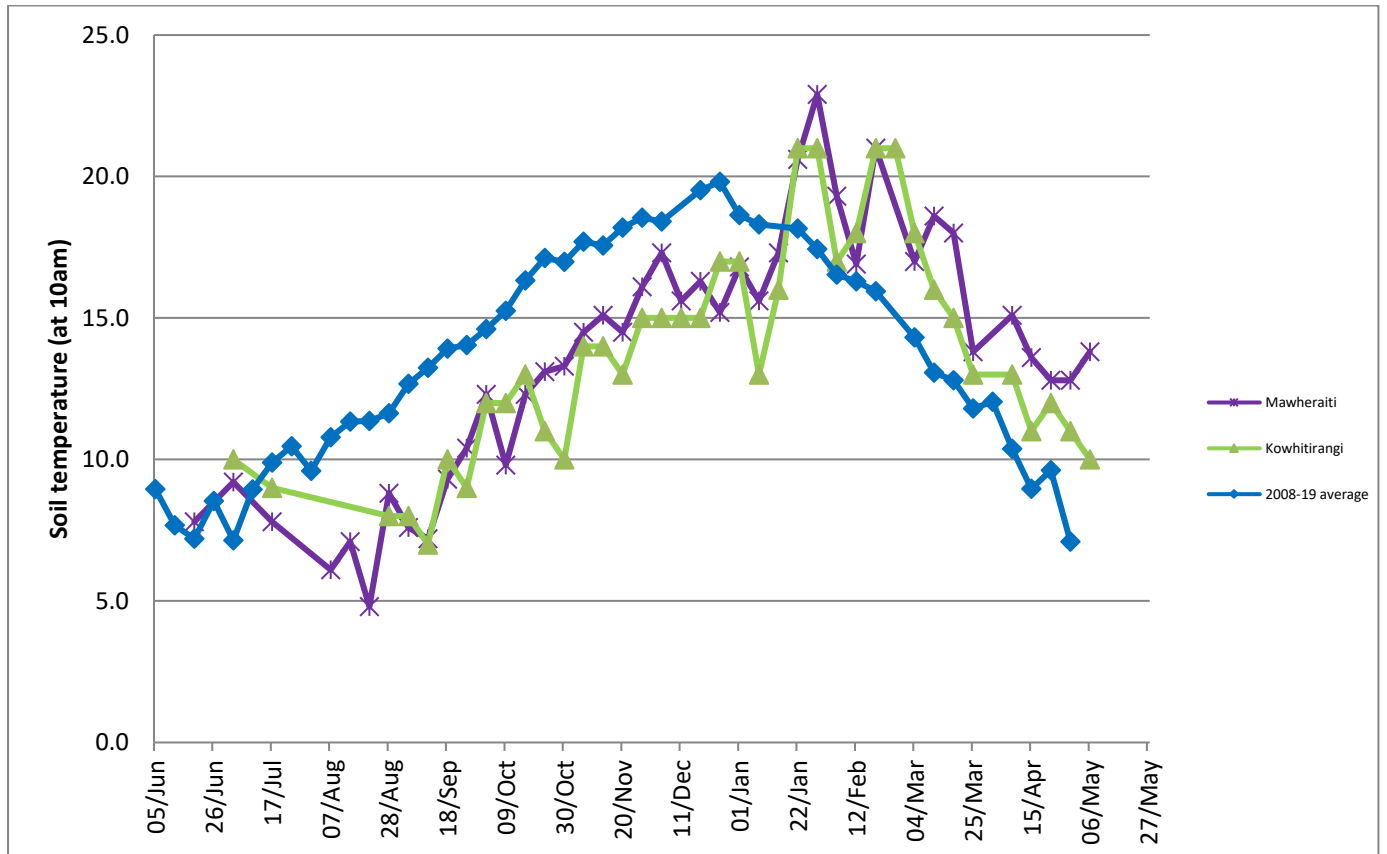
	Mawheraiti	Kowhitirangi
Average cover (kg DM/ha)	2098	1854
APC (29 April)	2720	1831
Rotation length (days)	29	32
Stocking rate	2.2	2.1
Percentage in milk	100	100
Milksolids kg/cow	1.48	1.41
Milksolids kg/ha	3.3	2.8
MS/cow (season to date)	396	444
MS/ha (season to date)	995	885
N (kg/ha) year to date	252	282
Current N application rate kg N/ha	25	25
	2 Mar	4 Mar
DM%	11.4	11.6
Pasture ME	11.5	11.9
Pasture NDF	48.4	45.0
Pasture CP	28.5	29.5
Target Intake (kg DM/cow/d)	17	17
Supplement (kg/cow/day)	4.7	6.9
Soil temperature (°C)	13.8	10
Growth Rate (kg DM/day)	4	13
Rainfall	65	102
Conditions for farmwalk	Beautiful and fine, very cold. Bit stressful with Covid 19. Spraying everything with sanitiser as I leave (taps, power switches, gates etc), trying to be a careful kiwi	Beautiful and fine, very cold. Bit stressful with Covid 19. Spraying everything with sanitiser as I leave (taps, power switches, gates etc), trying to be a careful kiwi

NB: pasture quality data are for 1 sample collected from each farm

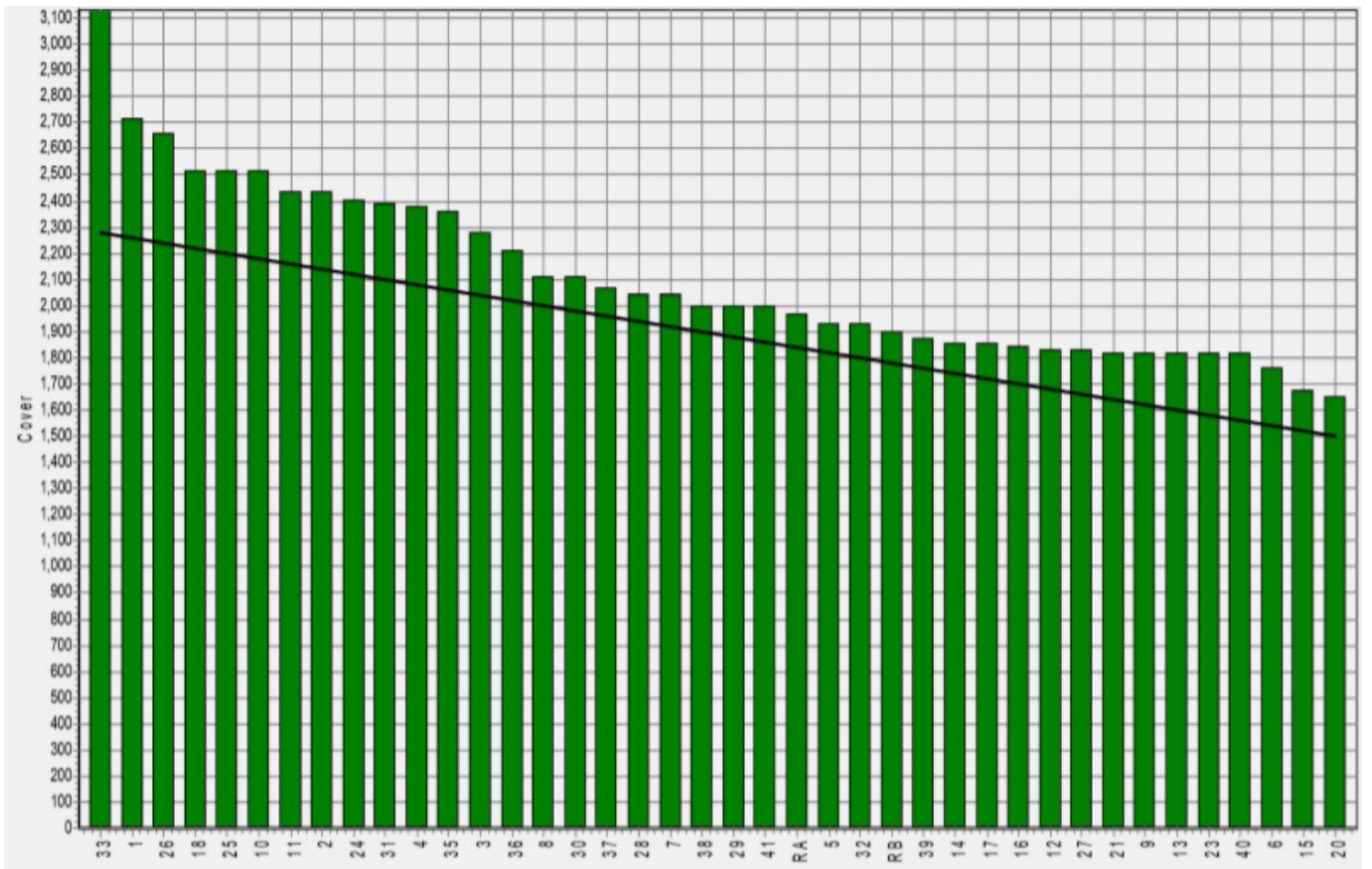
Weekly Pasture Growth Rates



Weekly Soil Temperature



Mawheraiti



Kowhitirangi

