

# Westland Monitor Farm Project

Weekly Update as at week ending Wednesday 7<sup>th</sup> August 2019

## CO Comment

Calving is upon us. Ensuring the soon to be calved and newly calved cows are fed properly whilst maintaining pasture quality, will help set up for a good milking season.

As calving progresses pre-grazing covers may drop, supplements may be necessary to ensure cow feed requirements are met. Regularly monitor cow pasture intakes and use supplements if required to maintain areas allocated using the [Spring Rotation Planner](#) .

It is important to ensure residuals in the first milking rotation are at 1,500 – 1,600 kg DM/ha so the pasture plant is left in a strong state to tiller and grow quality feed for subsequent rotations. Under grazing will reduce future growth to the same extent as over grazing.

**Avoid under allocating pasture:** If post-grazing residuals are less than target, this indicates the cows are being underfed. Restricting pasture allowance to less than minimum cow requirements in early lactation will cause an immediate drop in milk production but the impact on whole season depends on timing, severity, and duration of the restriction. From a pasture perspective, there are no lasting negative impacts of grazing lower than target residuals once in early spring, provided pastures are given time to recover before the next grazing.

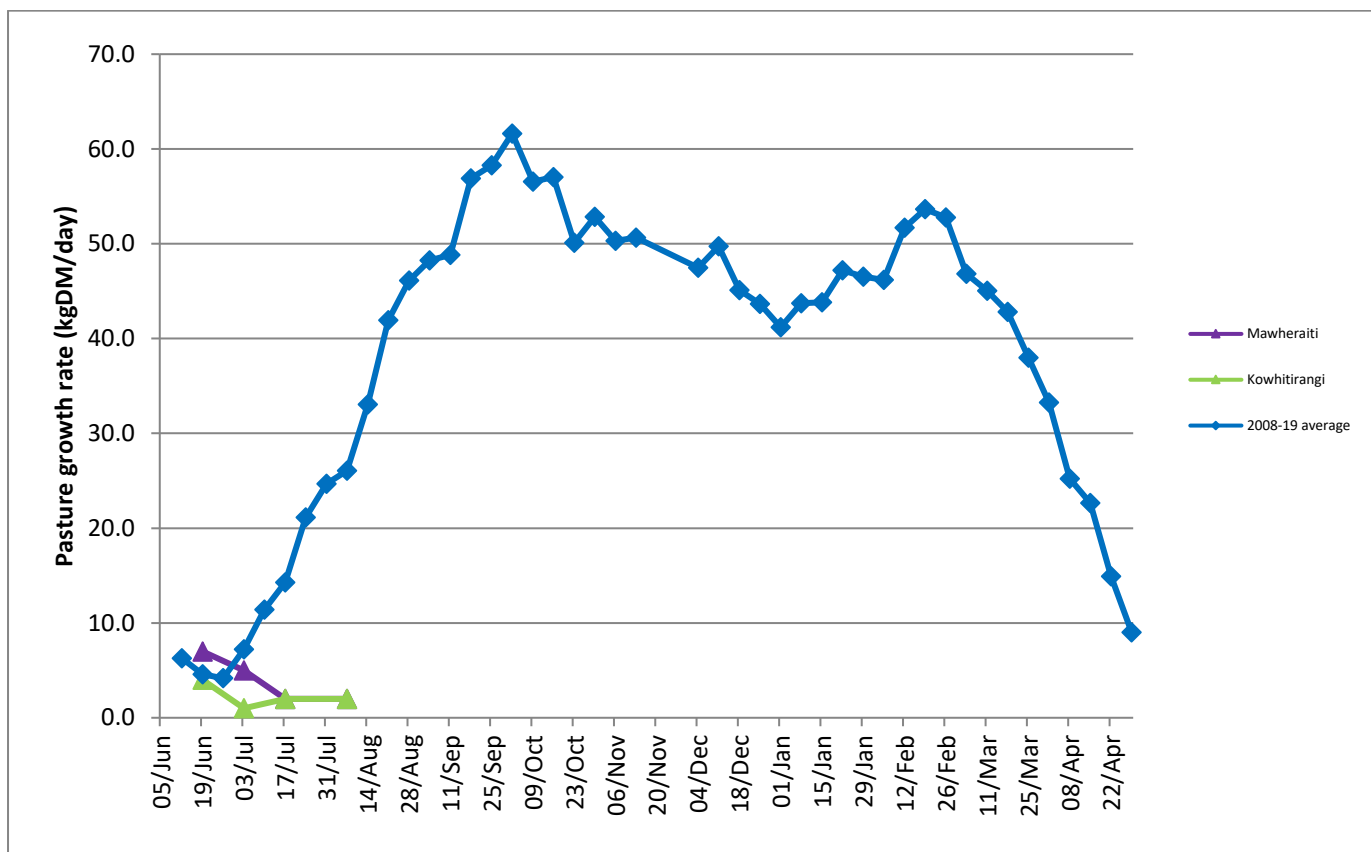
Trials indicate cows (calving at appropriate BCS) can recover from a short-term moderate feed restriction in early lactation (75% of requirements/ residual 2.7cm for 14 days) with no negative effects on whole season production. If the restriction is more severe or the restriction lasts for a longer period, then there are both short and long term negative effects on milk solid production.

## Farm Summary

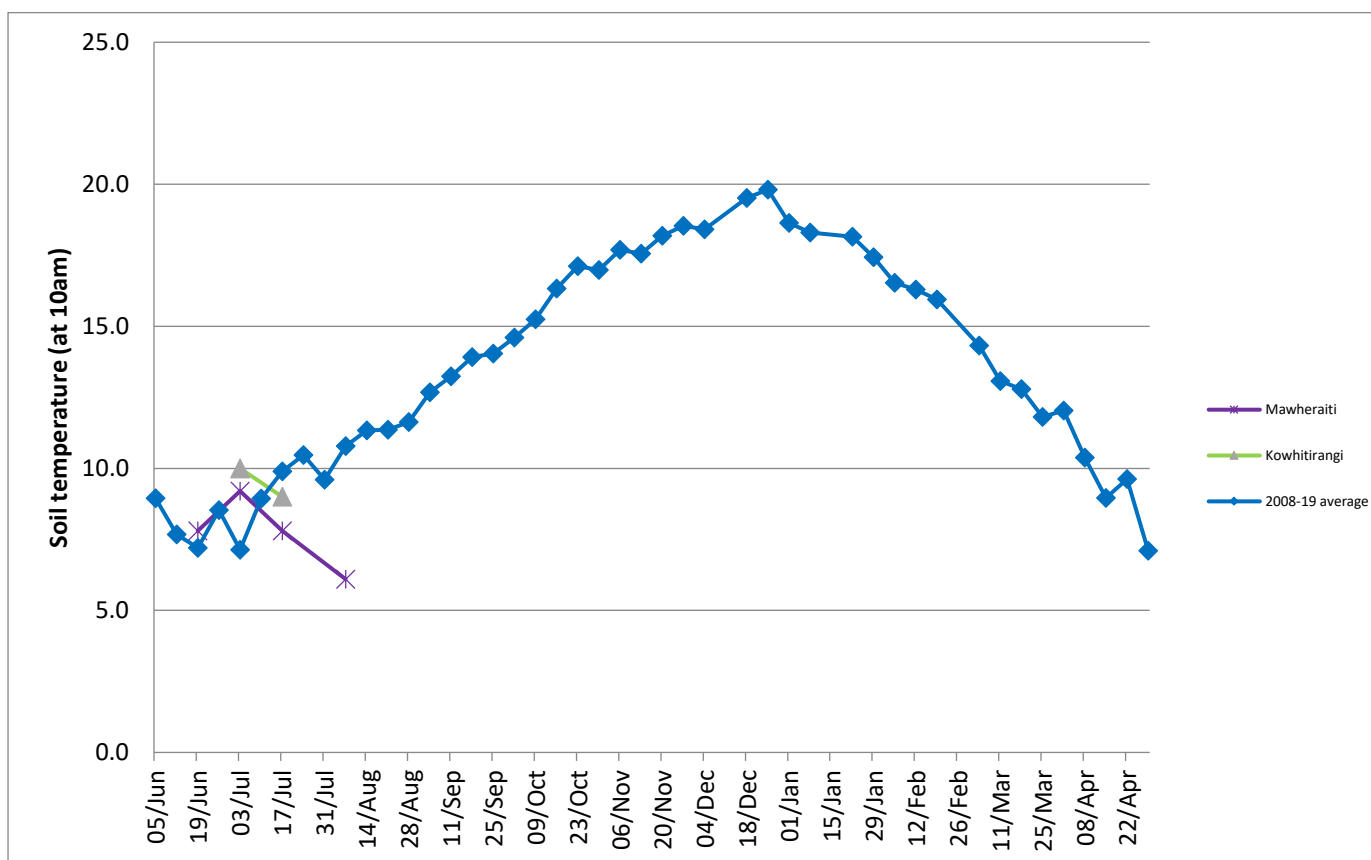
	Mawheraiti	Kowhitirangi
Average cover (kg DM/ha)	2340	1934
APC (3 July)	2340	1934
Rotation length (days)		
Stocking rate		
Percentage in milk		
Milksolids kg/cow		
Milksolids kg/ha		
MS/cow (season to date)		
MS/ha (season to date)		
N (kg/ha) year to date		
Current N application rate kg N/ha	-	-
	26 May	29 May
DM%	12.4	9.5
Pasture ME	>12.7	>12.7
Pasture NDF	43.8	41.6
Pasture CP	36.0	36.0
Target Intake (kg DM/cow/d)	13.6	
Supplement (kg/cow/day)	13.6	14
Soil temperature (°C)	6.1	
Growth Rate (kg DM/day)	2	2
Rainfall	90	
Conditions for farmwalk	Weather terrible. Heavy rain	Heavy Rain
Comments	20 calved. Limited data due to weather conditions	

NB: pasture quality data are for 1 sample collected from each farm

## Weekly Pasture Growth Rates



## Weekly Soil Temperature



## Mawheraiti



## Kowhitirangi

