

# Westland Monitor Farm Project

Weekly Update as at week ending Wednesday 8<sup>th</sup> January 2020

## CO Comment

Hopefully everyone has had a great Christmas and New Year and managed to get a little break over the holiday. If you didn't manage to get a break, then I hope there is one planned or at the very least you managed to enjoy yourself by eating your weight in Christmas goodies possibly gaining a body condition score (BCS) in the process!

Whilst we are on the topic of BCS, we must preserve this (in the cows) as we have another 8-10 weeks of this year available before body condition score thresholds will start becoming important for next seasons production. Vulnerable cows (young, old etc) will be the first to show signs of BCS loss. Consider a change in milking frequency for this group of animals. If this is not an option, make sure that passengers in the herd aren't eating feed that could be prioritised for these animals. Identify and remove culls to preserve feed for the 'core' milking herd. If considering moving your pregnancy testing forward to identify empty cows it is important to discuss this with the vets first.

Planning for winter is paramount. Due to the appalling nature of the weather this season, many currently have less than normal winter supplements on hand at present and will need to have a plan in place as to how a potential winter feed shortage can be mitigated. Keep in touch with suppliers to ensure the availability of winter feed, if needed.

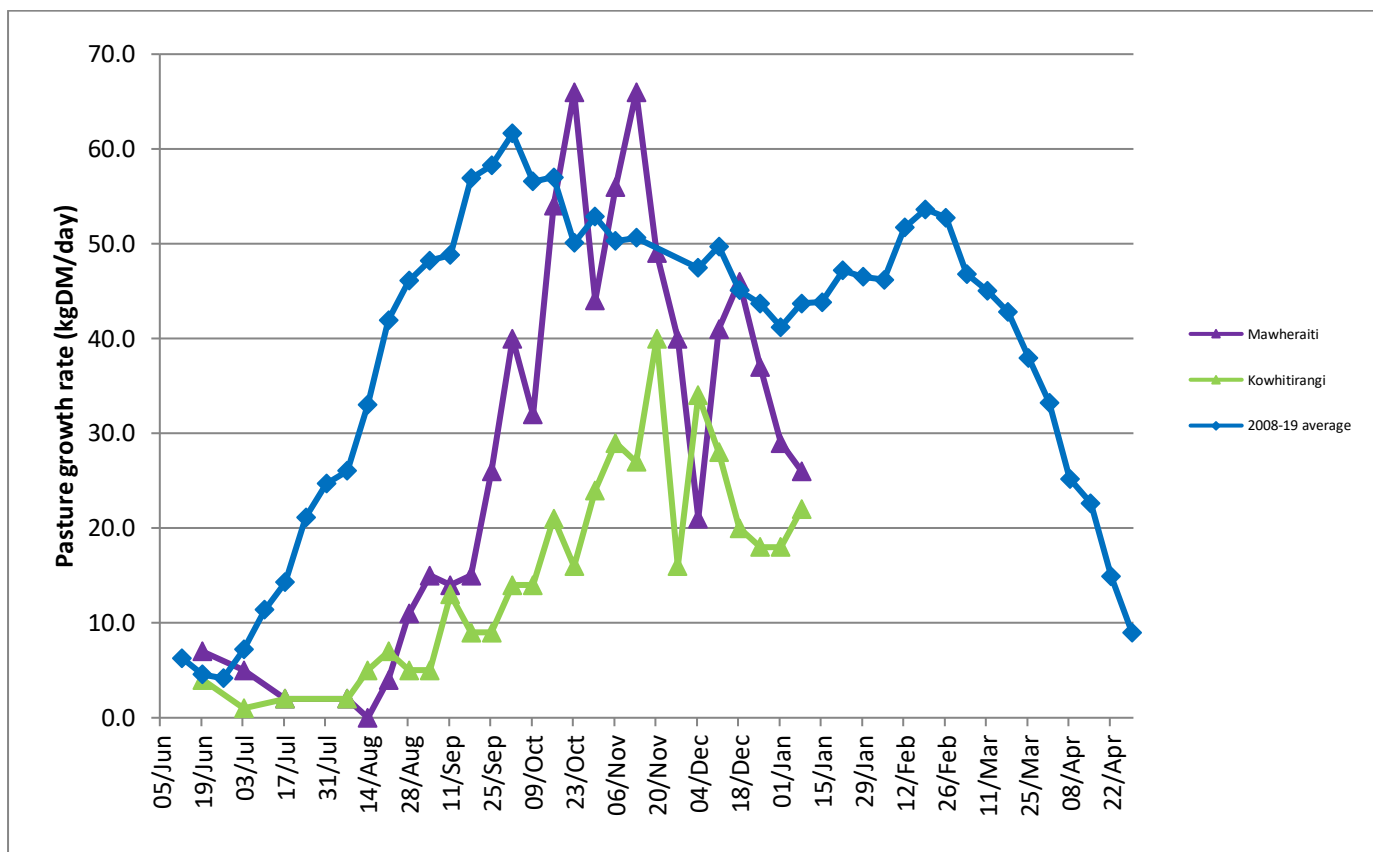
Taking a bit of time to reassess the plan (or make one) for the coming months is time well spent.

## Farm Summary

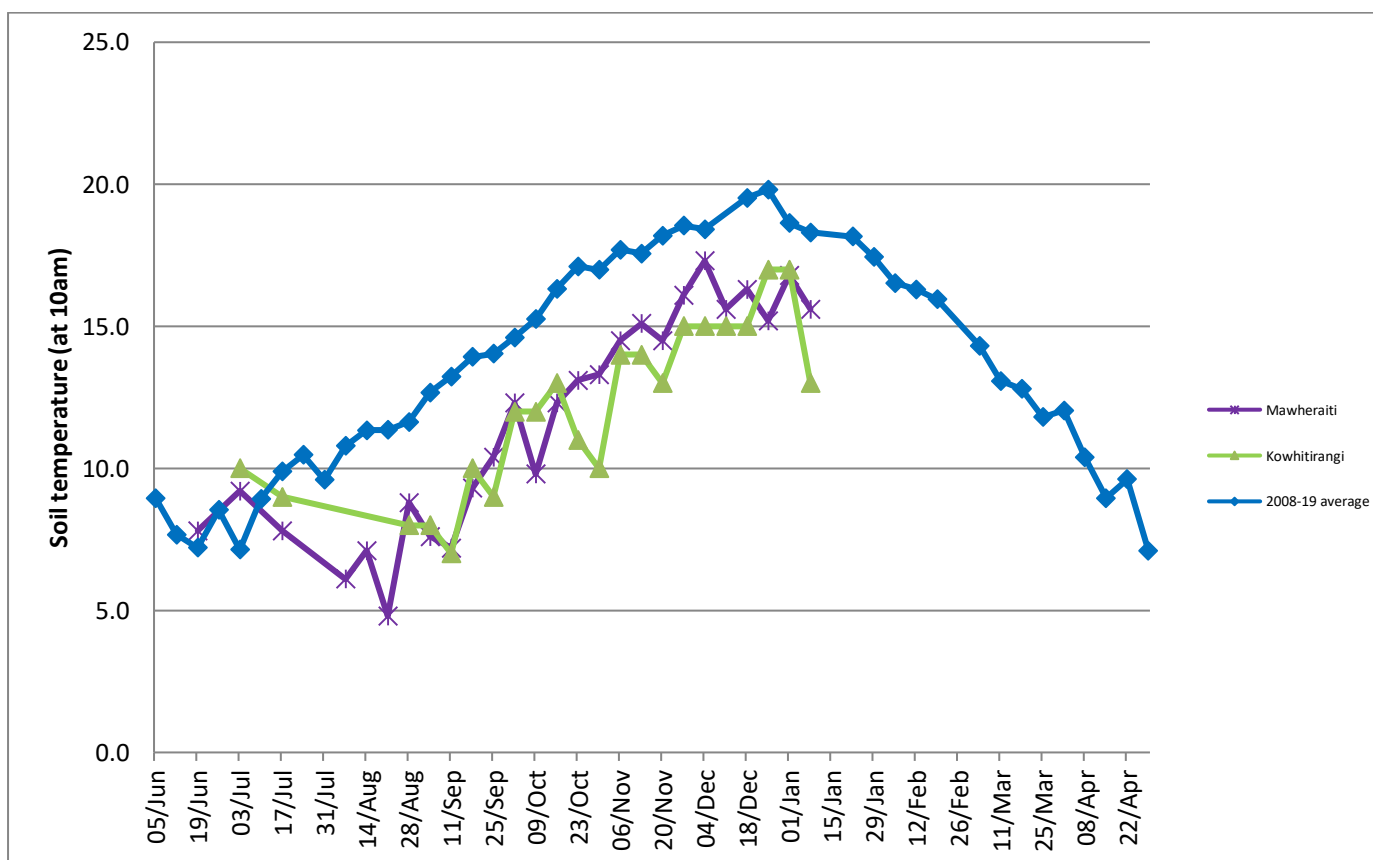
	Mawheraiti	Kowhitirangi
Average cover (kg DM/ha)	2016	1969
APC (3 July)	2061	1937
Rotation length (days)	26	25
Stocking rate	2.5	2.4
Percentage in milk	100	100
Milksolids kg/cow	1.61	1.79
Milksolids kg/ha	4.0	3.8
MS/cow (season to date)	228	263
MS/ha (season to date)	573	525
N (kg/ha) year to date	115	175
Current N application rate kg N/ha	24	30
	2 Dec	4 Dec
DM%	15.3	11.5
Pasture ME	11.6	12.4
Pasture NDF	44.0	44.3
Pasture CP	20.6	29.4
Target Intake (kg DM/cow/d)	19	18
Supplement (kg/cow/day)	2	2
Soil temperature (°C)	15.6	13
Growth Rate (kg DM/day)	26	22
Rainfall	7	29
Conditions for farmwalk	Pouring rain, cold, windy	Fine but cold

NB: pasture quality data are for 1 sample collected from each farm

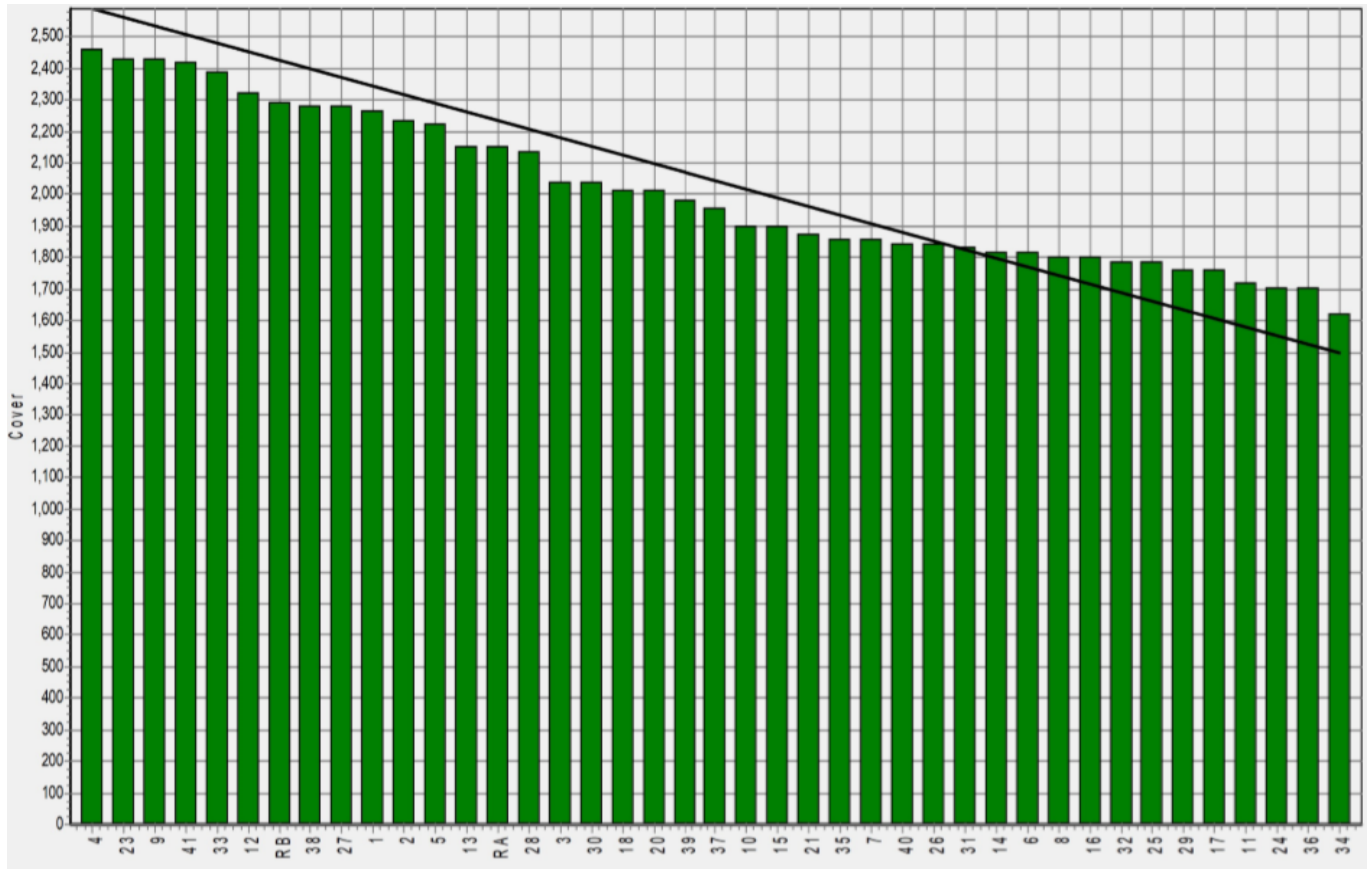
## Weekly Pasture Growth Rates



## Weekly Soil Temperature



### Mawheraiti



### Kowhitirangi

