

Westland Monitor Farm Project

Weekly Update as at week ending Wednesday 9th October 2019

CO Comment

After a couple of beauty sunny days last weekend, it has been followed by a week of intense rain for most of the region, especially south of Greymouth where totals of 400mm+ have been recorded. Temperatures have been milder but still soils are water-logged and low sunshine hours are resulting in poor grass growth rates.

Farmers are continuing to hold round lengths tight the best they can, adding supplement into the cow's diet to make up short fall. Production and cow condition have been impacted by this harsh combination of all elements affecting farms.

Calving is over or down to single digits for most farms now. Calves have also had a check in growth rates given the spring conditions. Keep feeding them milk, meal and/or hay and ensure not to wean until have been weighed and reaching industry target weights. It's easier to do the maintenance on calves now than wean early and spend time and resources trying to pull them up to targets without milk in their diet later.

There is a round of discussion groups coming up across the region over the next couple of weeks, talking cows, grass, current situations on farms, the Freshwater package, what's instore for the area from DairyNZ, and much more so take a look at the link below and get along to an event near you.

<https://www.dairynz.co.nz/events/?region=5454>

Reminder that we encourage all farmers to make a submission on the proposed Essential Freshwater Package.

In your submission, you can include comments on what you agree with and what you disagree with. If you disagree with a proposal, do you have ideas for an alternative which could be effective? You can also include comments about what you are already doing on your farm to improve water quality. Details of what is in DairyNZ's submission should be available from October 17th.

Submissions close on October 31 and can be made at <https://www.dairynz.co.nz/environment/in-your-region/essential-freshwater-package/>

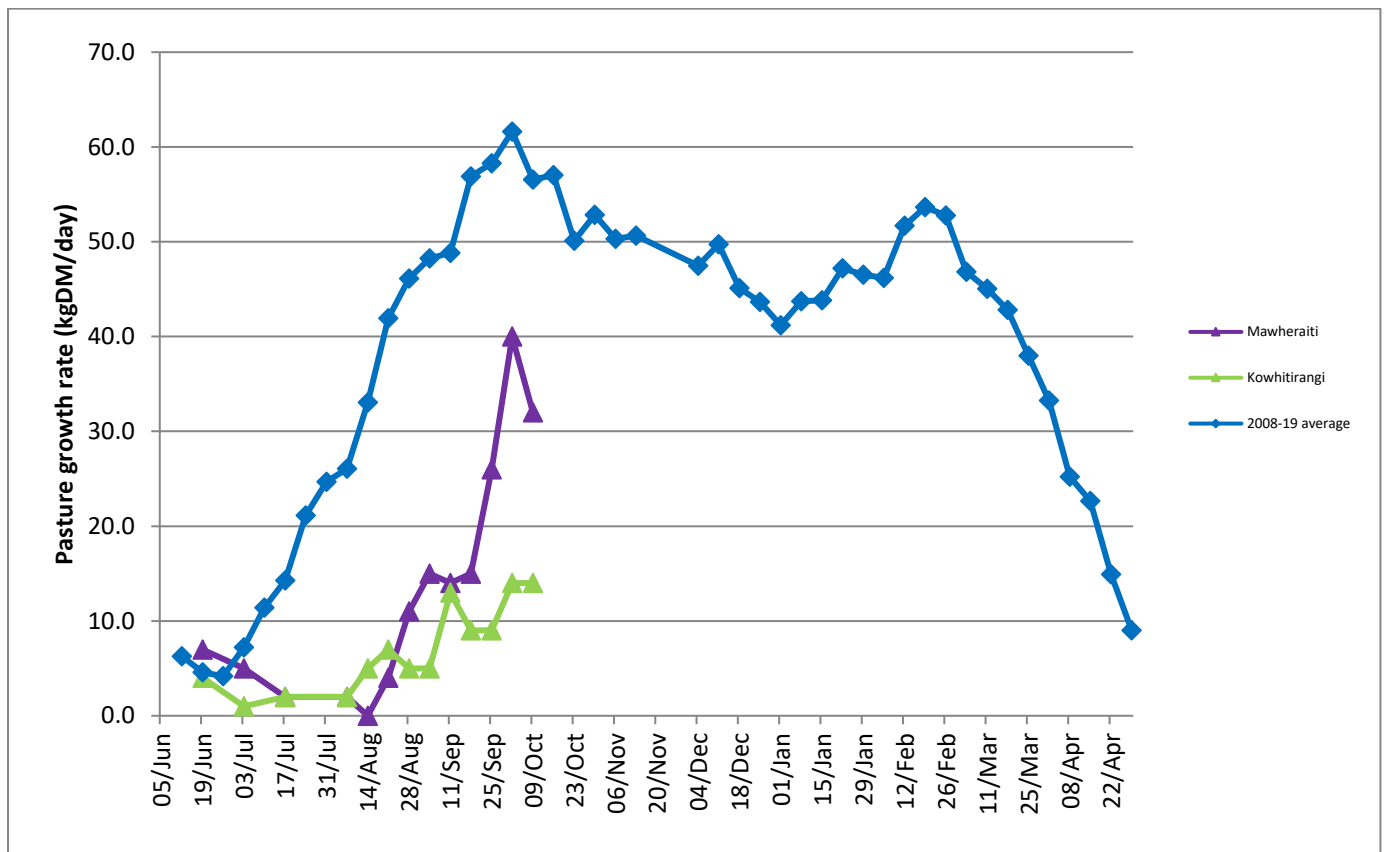
If you would like to discuss the process around submissions or any concerns about what this may mean for your business feel free to contact DairyNZ at <https://www.dairynz.co.nz/contact-us/regional-teams/?region=6803>

Farm Summary

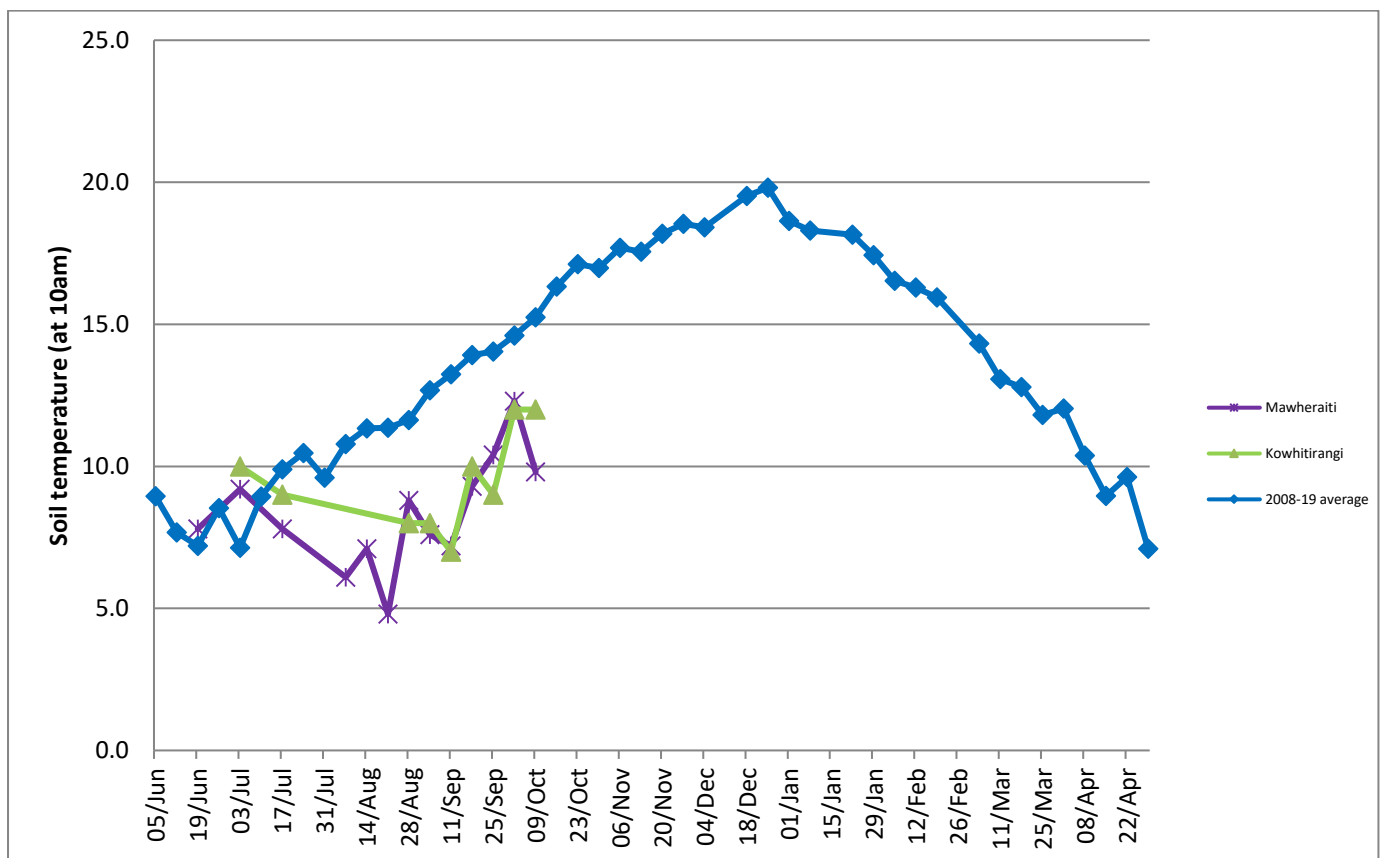
| | Mawheraiti | Kowhitirangi |
|------------------------------------|------------|--|
| Average cover (kg DM/ha) | 2142 | 1859 |
| APC (3 July) | 2180 | 1825 |
| Rotation length (days) | 28 | 27 |
| Stocking rate | 2.3 | 2.2 |
| Percentage in milk | 99 | 100 |
| Milksolids kg/cow | 2.02 | 1.89 |
| Milksolids kg/ha | 4.9 | 4.0 |
| MS/cow (season to date) | 62 | 83 |
| MS/ha (season to date) | 155 | 166 |
| | | |
| N (kg/ha) year to date | 37 | 44 |
| Current N application rate kg N/ha | - | - |
| | | |
| | 2 Sept | 4 Sept |
| DM% | 15.5 | 17.3 |
| Pasture ME | 12.3 | 12.6 |
| Pasture NDF | 48.3 | 36.1 |
| Pasture CP | 24.0 | 24.0 |
| | | |
| Target Intake (kg DM/cow/d) | 19 | 18 |
| Supplement (kg/cow/day) | 1.4 | 3 |
| | | |
| Soil temperature (°C) | 9.8 | 12 |
| Growth Rate (kg DM/day) | 32 | 14 |
| Rainfall | 40 | 45 |
| Conditions for farmwalk | Fine, just | Torrential rain, paddocks covered in water, creeks flooded |

NB: pasture quality data are for 1 sample collected from each farm

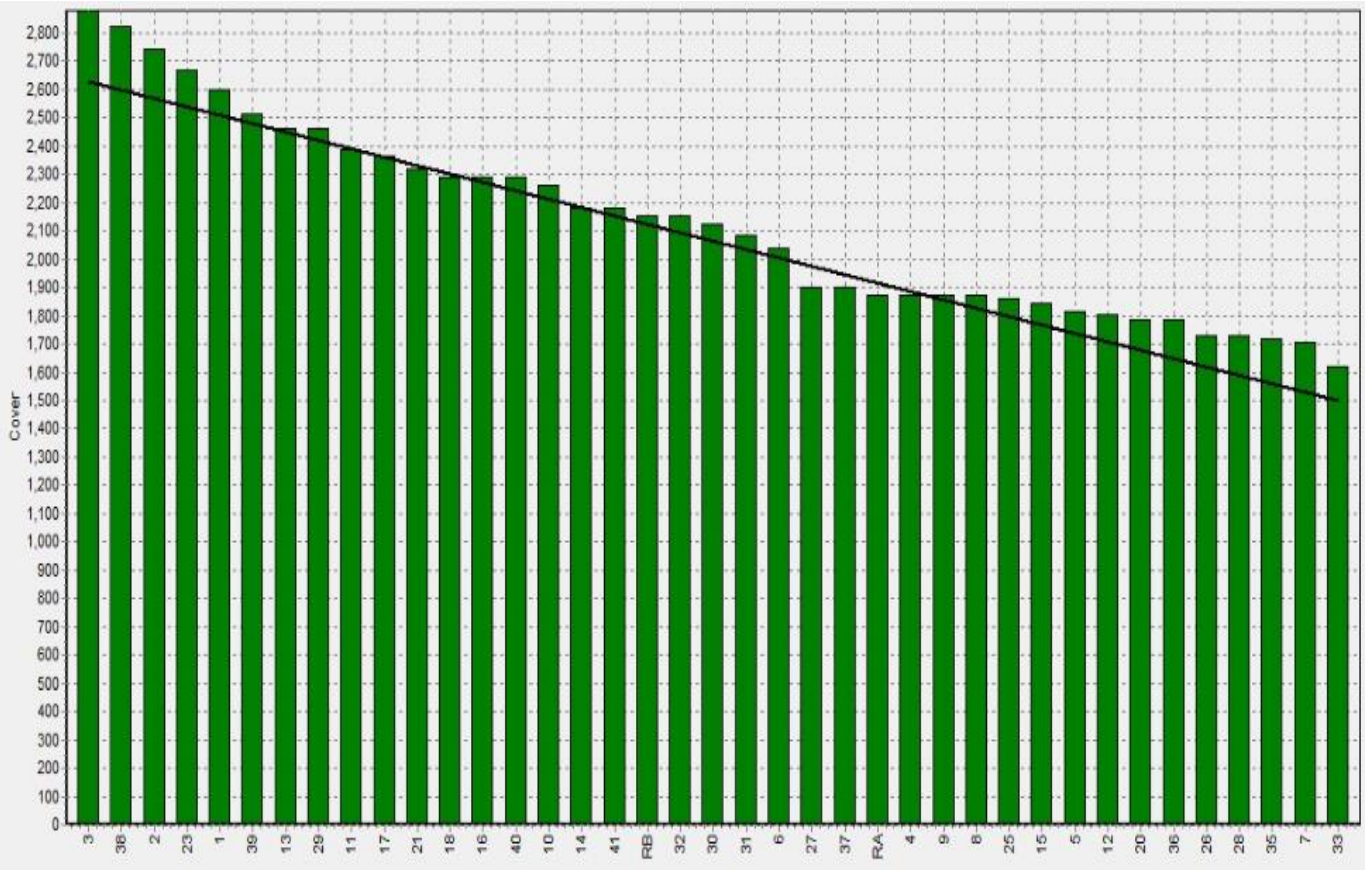
Weekly Pasture Growth Rates



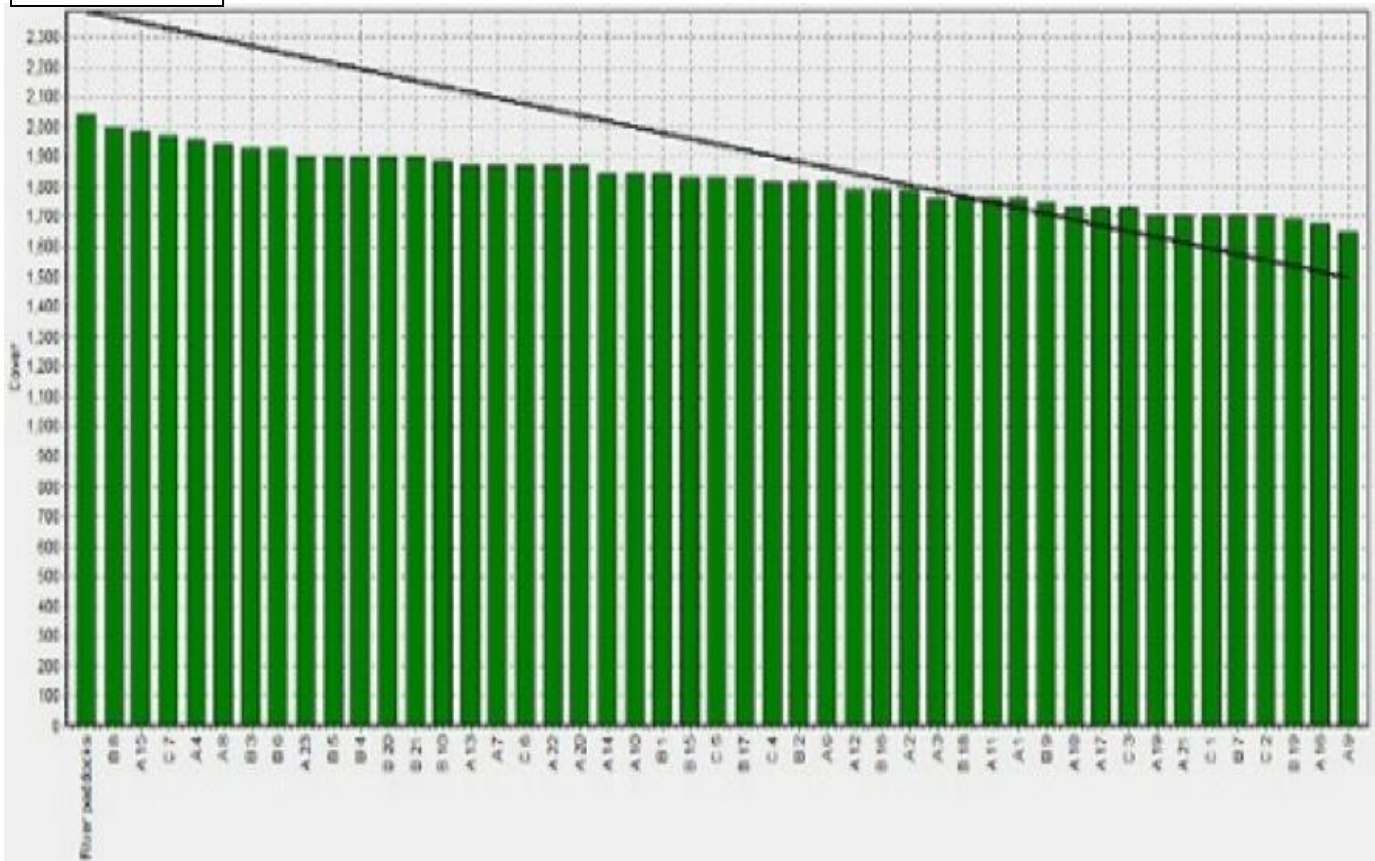
Weekly Soil Temperature



Mawheraiti



Kowhitirangi



Mawheraiti

| Description | Date | RPM | % DM | % Prot | % Lipid | % ADF | % NDF | Sol Sugar | OMD % | MJME/kg |
|-------------|----------|------|------|--------|---------|-------|-------|-----------|-------|---------|
| Paddock 2 | 15/07/19 | 15.4 | 12.7 | 30.2 | 3.8 | 19.2 | 38.4 | 8.5 | 88.8 | 13.0 |
| Paddock 17 | 2/09/19 | 16.8 | 15.5 | 24.0 | 4.7 | 11.4 | 48.3 | 12.0 | 84.4 | 12.3 |
| | | | | | | | | | | |
| | | | | | | | | | | |
| | | | | | | | | | | |
| | | | | | | | | | | |
| | | | | | | | | | | |
| | | | | | | | | | | |
| | | | | | | | | | | |
| | | | | | | | | | | |
| | | | | | | | | | | |
| | | | | | | | | | | |
| | | | | | | | | | | |
| | | | | | | | | | | |
| | | | | | | | | | | |
| | | | | | | | | | | |
| | | | | | | | | | | |
| | | | | | | | | | | |
| | | | | | | | | | | |
| | | | | | | | | | | |
| | | | | | | | | | | |
| | | | | | | | | | | |
| | | | | | | | | | | |
| | | | | | | | | | | |
| | | | | | | | | | | |
| | | | | | | | | | | |
| | | | | | | | | | | |
| | | | | | | | | | | |
| | | | | | | | | | | |
| | | | | | | | | | | |
| | | | | | | | | | | |
| | | | | | | | | | | |
| | | | | | | | | | | |
| | | | | | | | | | | |
| | | | | | | | | | | |
| | | | | | | | | | | |
| | | | | | | | | | | |

