

# Westland Monitor Farm Project

Weekly Update as at week ending Wednesday 2 September 2020

## CO Comment

With the recent bout of diverse weather, it is important to keep making the time to continue the farm walks and monitoring average pasture covers which will help keep control of pasture quality. Sometimes, in an effort to cut down the need for additional supplementary feed, the response is to move on to a quicker rotation length too early. This is particularly apparent when we have been seeing better than average growth rates. It can quickly bite though when the weather 'turns' such as what we saw last week with cooler temperatures and some heavy rain.

The Spring Rotation Planner identifies that the typical time to have completed the first round of the farm is during the first week of October – many have already grazed that area already. Pasture growth rates are not yet at a level where this rotation length is able to be supported and the end result is that average pasture covers drop rather than increase. Keep to the required area to be grazed each day and use the supplement that is available to hold the longer rotation length – it will pay dividends with a more suitable average pasture cover at balance date.

Using the Spring Rotation Planner to monitor your position and ensure good decisions are made is a good way to manage the pasture and supplement resource that is on hand. With the financial situation still tight through the spring, having your grazing management well planned will ensure that supplements are fed only when required and not wasted.

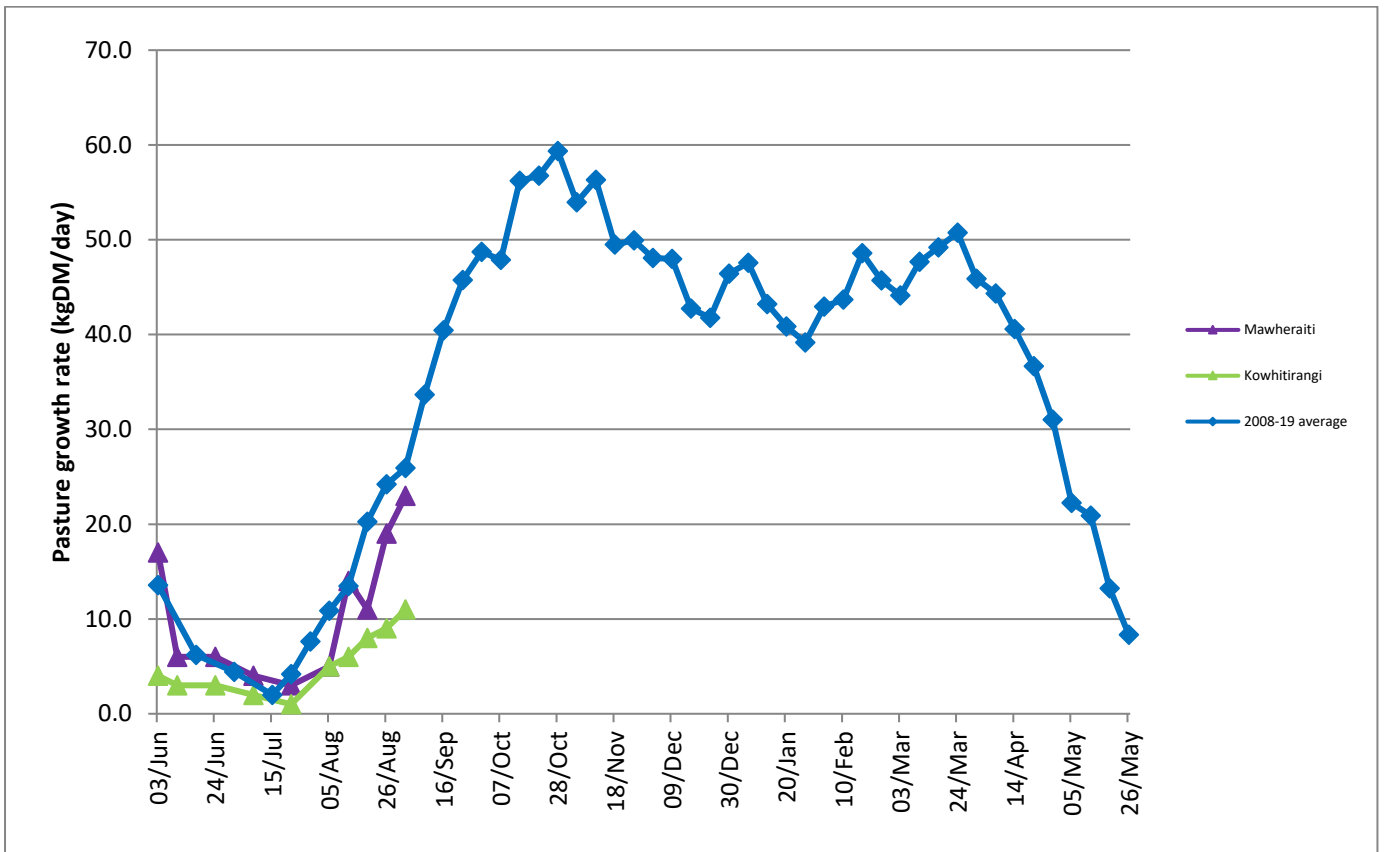
Remember to offer freshly calved cows at least 12-14 kg DM/day for Friesian and 10-12 kg DM/cow for Jersey – this is certainly a lesser amount than what they will be consuming at peak, but physiologically, that's about all they can consume at this stage of their lactation. Monitor your grazing residuals to ensure your targets are achieved as they will impact on both pasture regrowth rate and subsequent pasture quality.

## Farm Summary

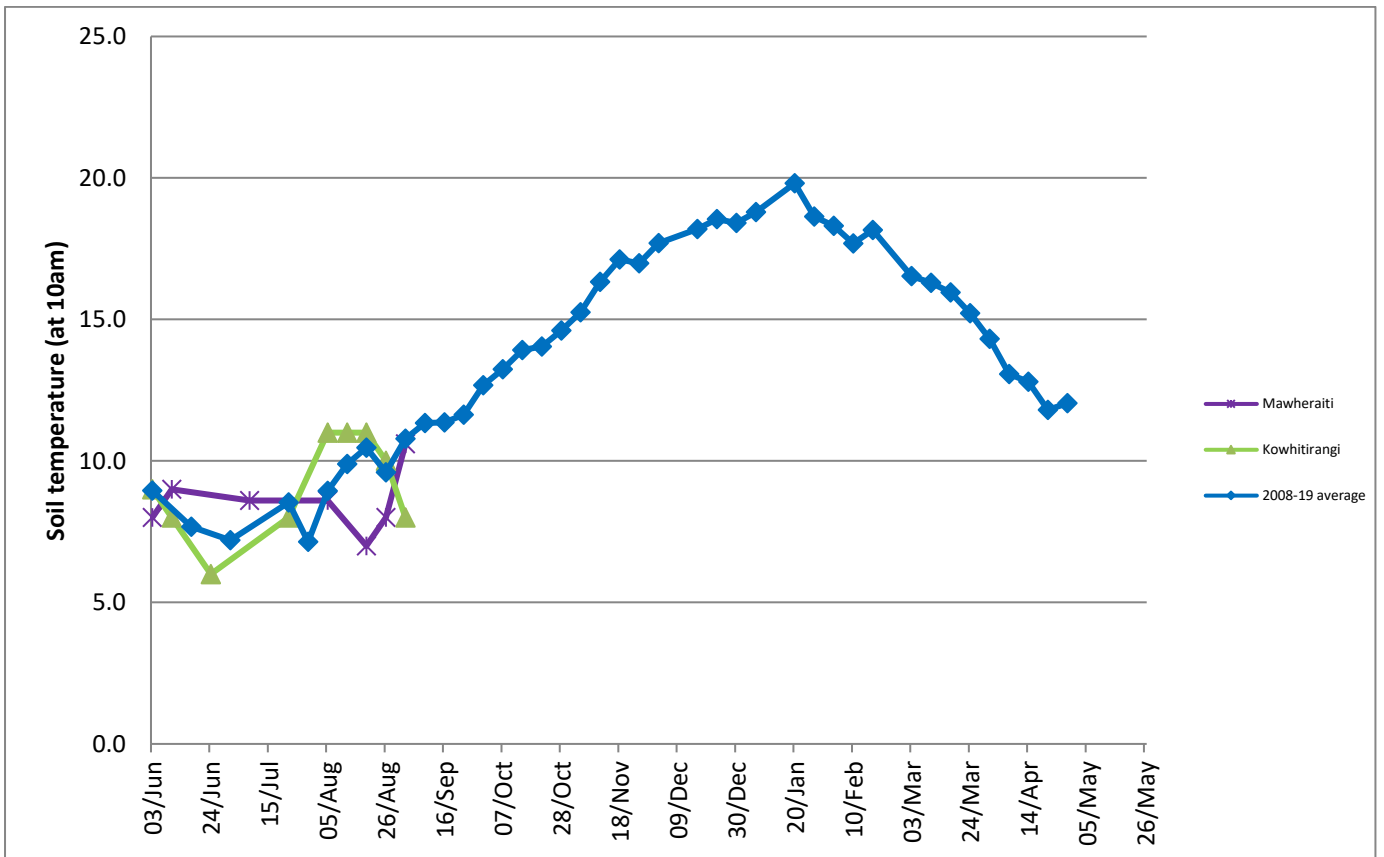
	Mawheraiti	Kowhitirangi
Average cover (kg DM/ha)	2320	1942
APC (19 August)	2287	1945
Rotation length (days)	70	60
Stocking rate		
Percentage in milk	70%	67%
Milksolids kg/cow	1.62	1.82
Milksolids kg/ha	2.6	2.5
MS/cow (season to date)	15	14
MS/ha (season to date)	38	30
N (kg/ha) year to date	35	22
Current N application rate kg N/ha	-	-
	3 Aug	5 Aug
DM%	12.4	11.7
Pasture ME	12.0	11.9
Pasture NDF	43.4	45.9
Pasture CP	31.7	30.9
Target Intake (kg DM/cow/d)	19	-
Supplement (kg/cow/day)	6.2	4.0
Soil temperature (°C)	10.6	8.0
Growth Rate (kg DM/day)	23	11
Rainfall	20	70
Conditions for farmwalk	Lovely, warm and sunny	Stunning day, snow low on mountains

NB: pasture quality data are for 1 sample collected from each farm

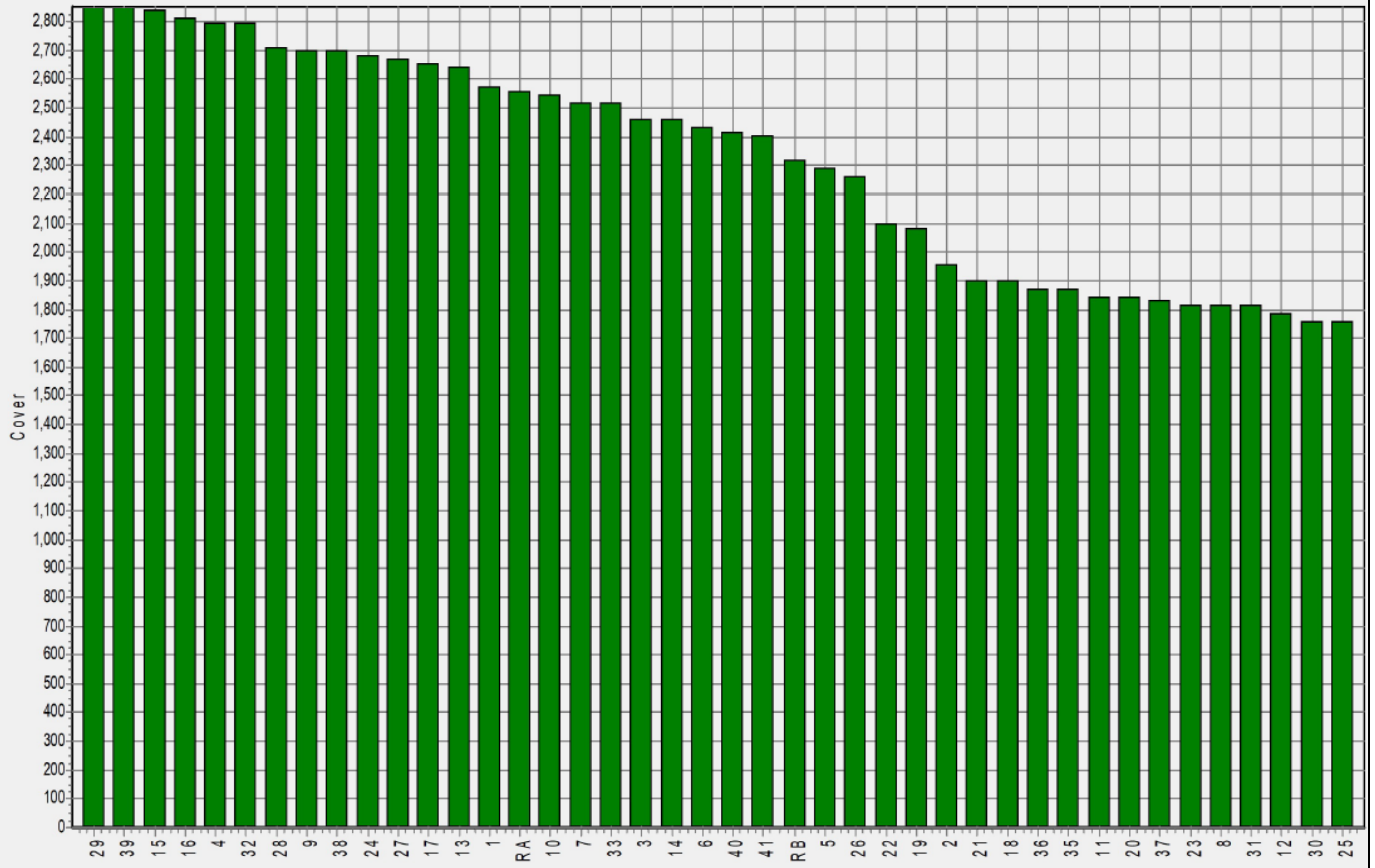
## Weekly Pasture Growth Rates



## Weekly Soil Temperature



## Mawheraiti



## Kowhitirangi

