

Westland Monitor Farm Project

Weekly Update as at week ending Wednesday 5 May 2021

CO Comment

With the 2020/2021 season nearing an end, it would be useful to plan a team meeting to reflect on the season, reviewing the decisions that were made, and more particularly, the reasons behind those decisions.

This season has been another variable one, so consider whether you would make the same decisions if faced with similar conditions again, and if so why or why not? Make sure the lessons learned from this season are used to make the business more robust for the future. The review team should include all the people that helped make the decisions – the team on the farm, the team at home, and the team in town – everyone worked together to get us to this point and will all have a valuable perspective on how things went.

Making some decisions now around what the trigger points will be in your business by asking questions like...

- what are you prepared to pay for supplement?
- how much supplement are you prepared to feed before you consider other options to reduce imported feed?
- what factors will influence your fertiliser applications?
- what are your timelines for financial reporting and monitoring?

These are just a few of many things you can consider to make your business run more smoothly and communicate effectively with the whole team.

There are lots of tools at <https://www.dairynz.co.nz> to help with reviewing your business.

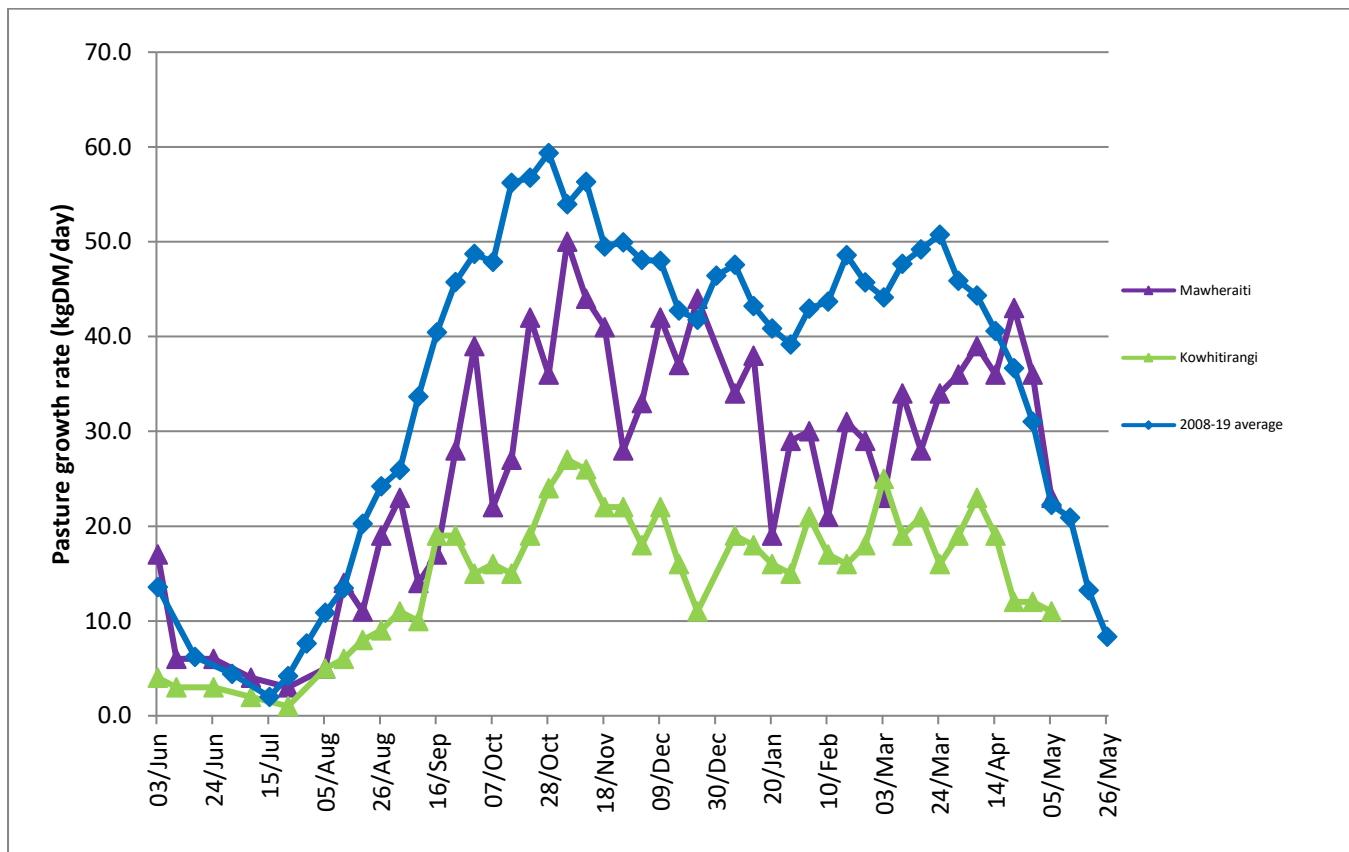
To get an understanding of where you may need to focus your attention you could start with Farm Gauge which is an interactive tool designed to highlight the strengths and opportunities within a farm business. Have a go at <https://www.dairynz.co.nz/business/business-analysis/analysis-tools/farm-gauge/>

Farm Summary

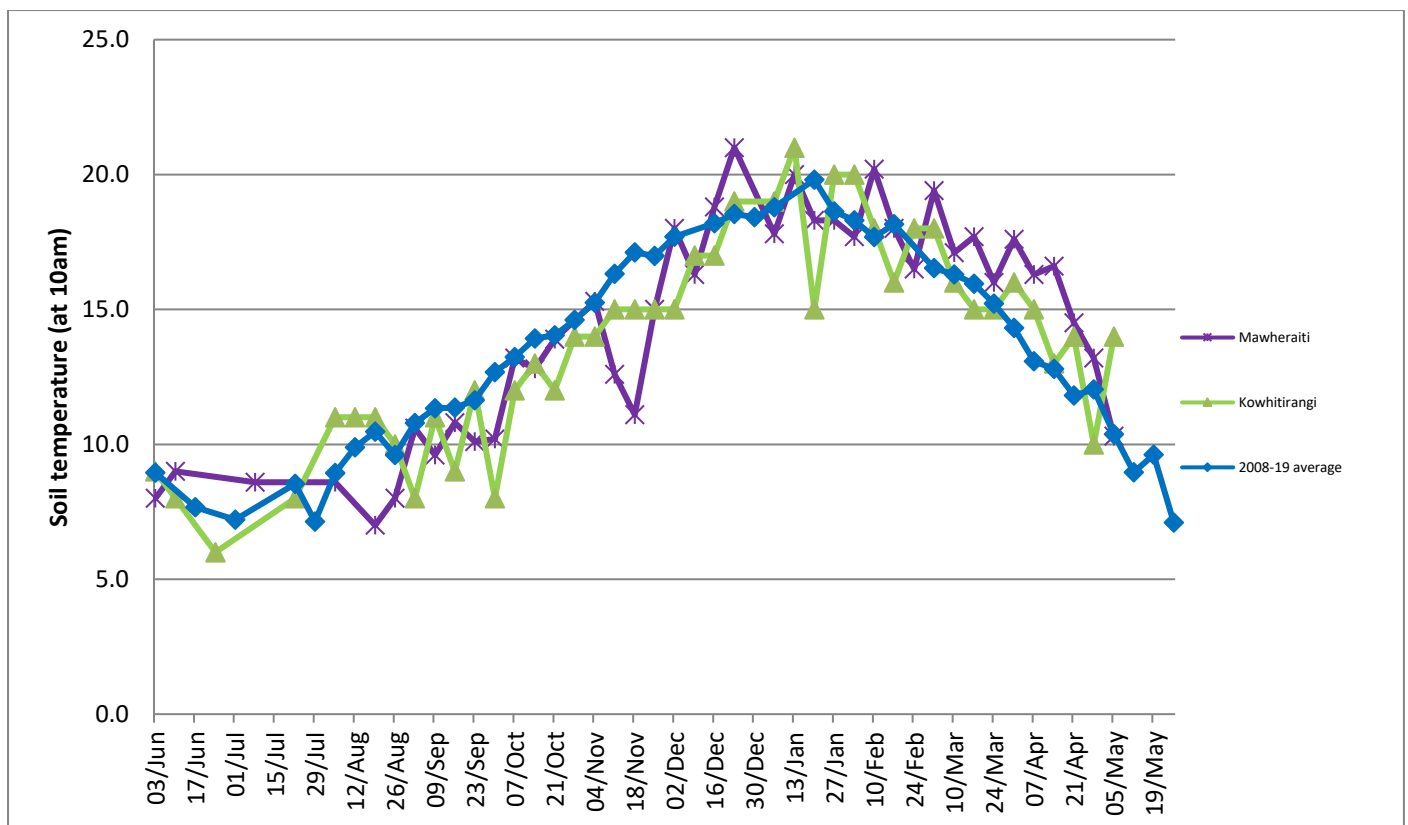
	Mawheraiti	Kowhitirangi
Average cover (kg DM/ha)	2139	1854
APC (28 April)	2262	1877
Rotation length (days)	30	30
Stocking rate	2.4	2.2
Percentage in milk	100%	100%
Milksolids kg/cow	1.27	1.19
Milksolids kg/ha	3.0	2.6
MS/cow (season to date)	439	413
MS/ha (season to date)	1039	889
N (kg/ha) year to date	252	212
Current N application rate kg N/ha	22	9
	7 April	12 April
DM%	11.7	9.8
Pasture ME	11.6	11.8
Pasture NDF	51.3	46.5
Pasture CP	28.0	26.0
Target Intake (kg DM/cow/d)	18	18
Supplement (kg/cow/day)	3.8	3.4
Soil temperature (°C)	10.3	14
Growth Rate (kg DM/day)	23	11
Rainfall	21	15
Conditions for farmwalk	Cold morning, beautiful sunny walk	Torrential rain on way to farm, but farm walk was fine
Notes:	As of 21 Apr, Blands went on once a day milking. Fertiliser done	Jeremy working hard to feed extra r2s on farm. Only for a month, thank goodness! Bridge is nearly complete

NB: pasture quality data are for 1 sample collected from each farm.

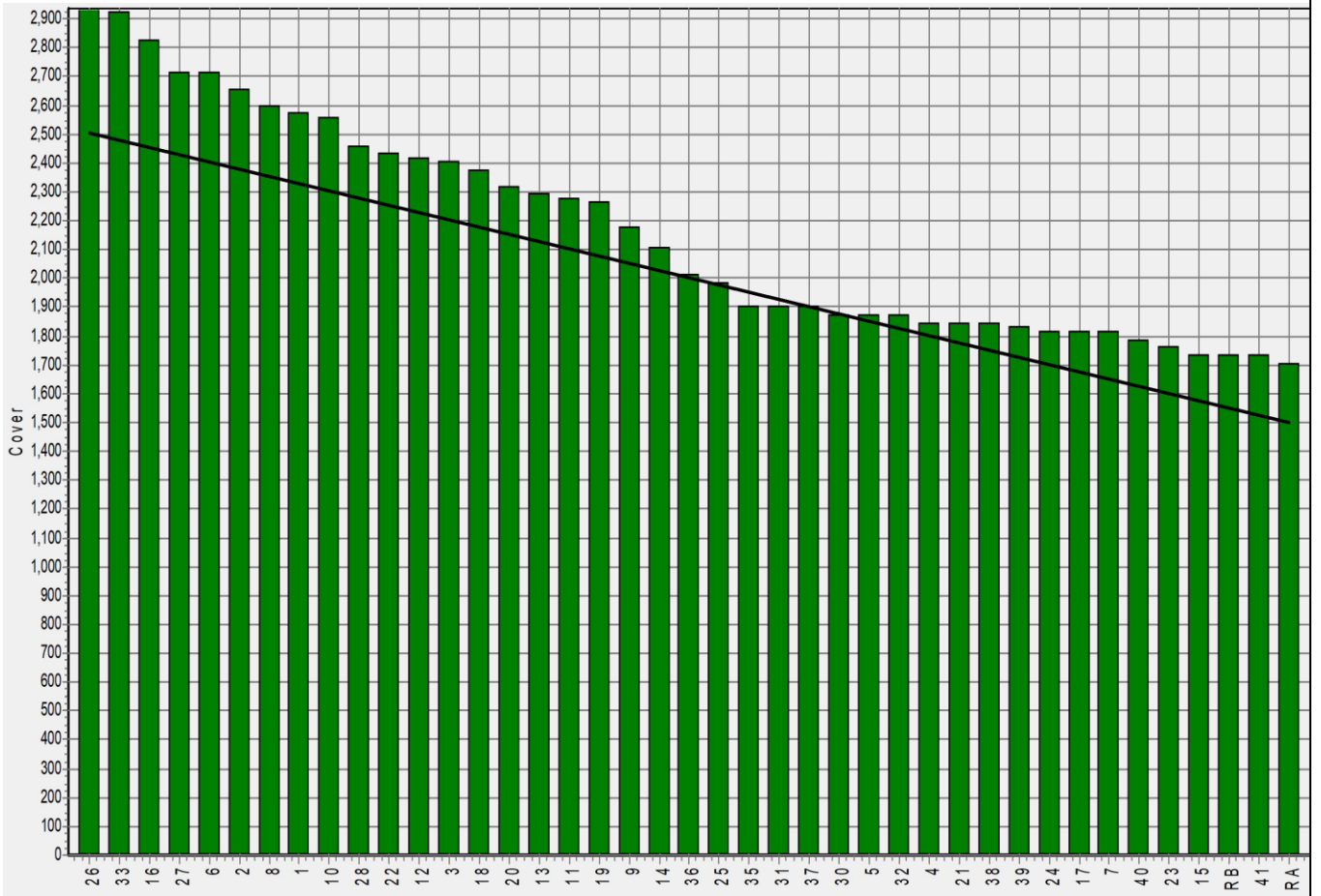
Weekly Pasture Growth Rates



Weekly Soil Temperature



Mawheraiti



Kowhitirangi

