

Westland Monitor Farm Project

Weekly Update as at week ending Wednesday 7 April 2021

CO Comment

What seem like buoyant growing conditions in comparison to much of the season prior to now has resulted in some later harvests of supplement and delayed sowing dates of new pastures. The important factors remain – cows need to be close to target calving body condition by drying off (BCS 5 for mixed aged cows and 5.5 for rising 2 and 3 year olds) and average pasture cover (APC) sufficient to achieve pasture cover requirements at calving.

There is no magic number as the amount required will be dependent on your wintering system. If wintering off the milking platform, on a support block or crop, APC at dry off can be lower as growth during June and July will contribute some growth but as always it is best to underestimate what this may be for your feed budget!

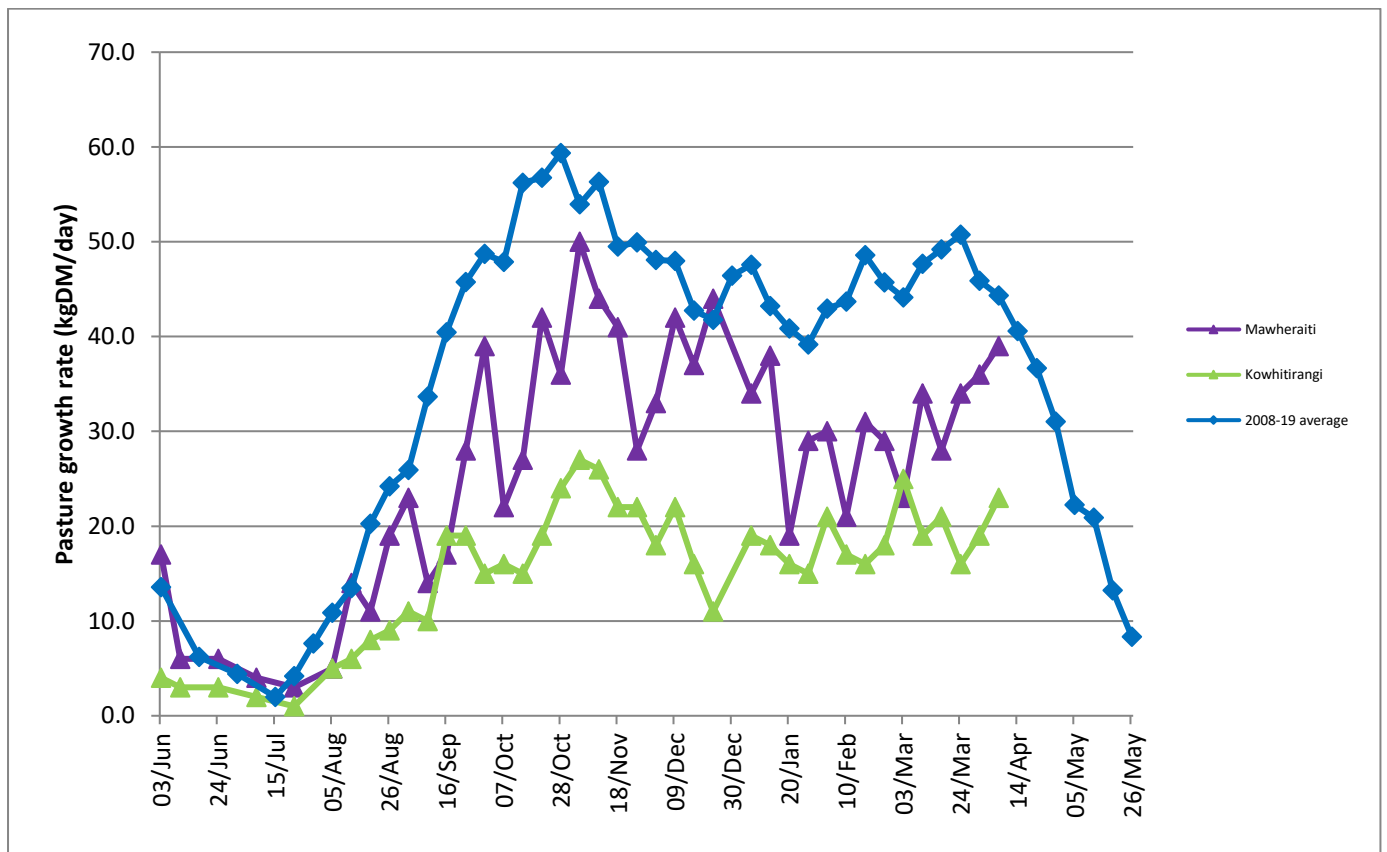
If you are wintering on the milking platform, APC at dry off needs to be close to that required at calving. Think about these factors, assess the current situation on your farm and develop a plan for the next 8 weeks, including a feed budget, to ensure your body condition and pasture targets are achieved. Management changes put in place now will be far more subtle and easier to implement than those that might be required this time next month.

Farm Summary

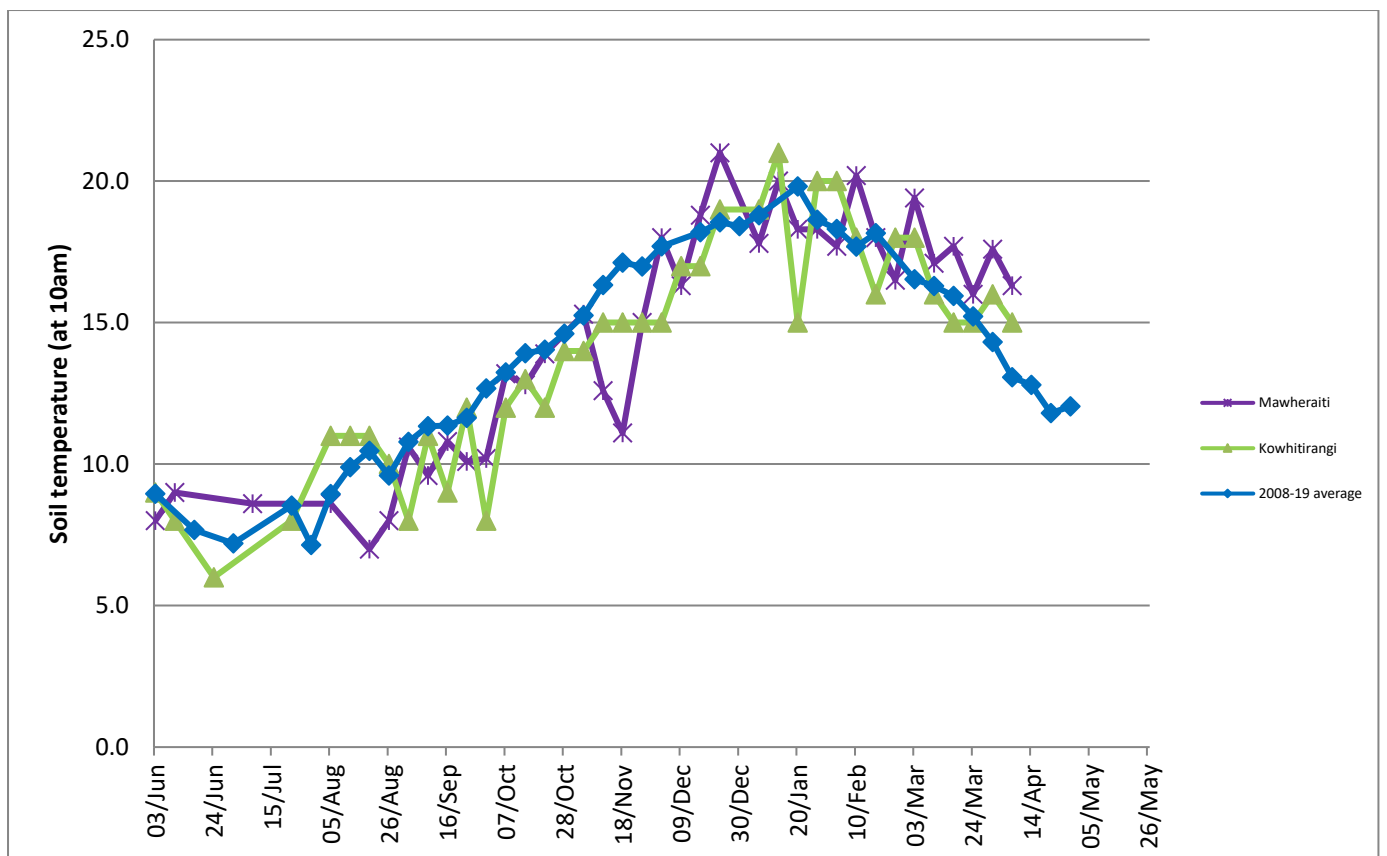
	Mawheraiti	Kowhitirangi
Average cover (kg DM/ha)	2160	2003
APC (31 March)	2135	2001
Rotation length (days)	30	32
Stocking rate	2.4	2.2
Percentage in milk	100%	100%
Milksolids kg/cow	1.56	1.46
Milksolids kg/ha	3.5	3.3
MS/cow (season to date)	399	376
MS/ha (season to date)	942	810
N (kg/ha) year to date	226	194
Current N application rate kg N/ha	22	0
	1 March	3 March
DM%	13.4	11.6
Pasture ME	11.4	11.7
Pasture NDF	47.3	51.8
Pasture CP	27.2	29.0
Target Intake (kg DM/cow/d)	18	18
Supplement (kg/cow/day)	0.79	2.4
Soil temperature (°C)	16.3	15
Growth Rate (kg DM/day)	39	23
Rainfall	14	40
Conditions for farmwalk	Beautiful warm, sunny day	Beautiful day
Notes:	<p>Home maize ready to take, wallies still 30%, another week.</p> <p>Started feeding silage to extend round.</p> <p>Good grass on farm, new grass drilled in wallies base.</p> <p>100kg N on rape crop.</p> <p>WCRC out for wintering training for new regulations/consents</p>	Farm looks great, plenty of grass

NB: pasture quality data are for 1 sample collected from each farm.

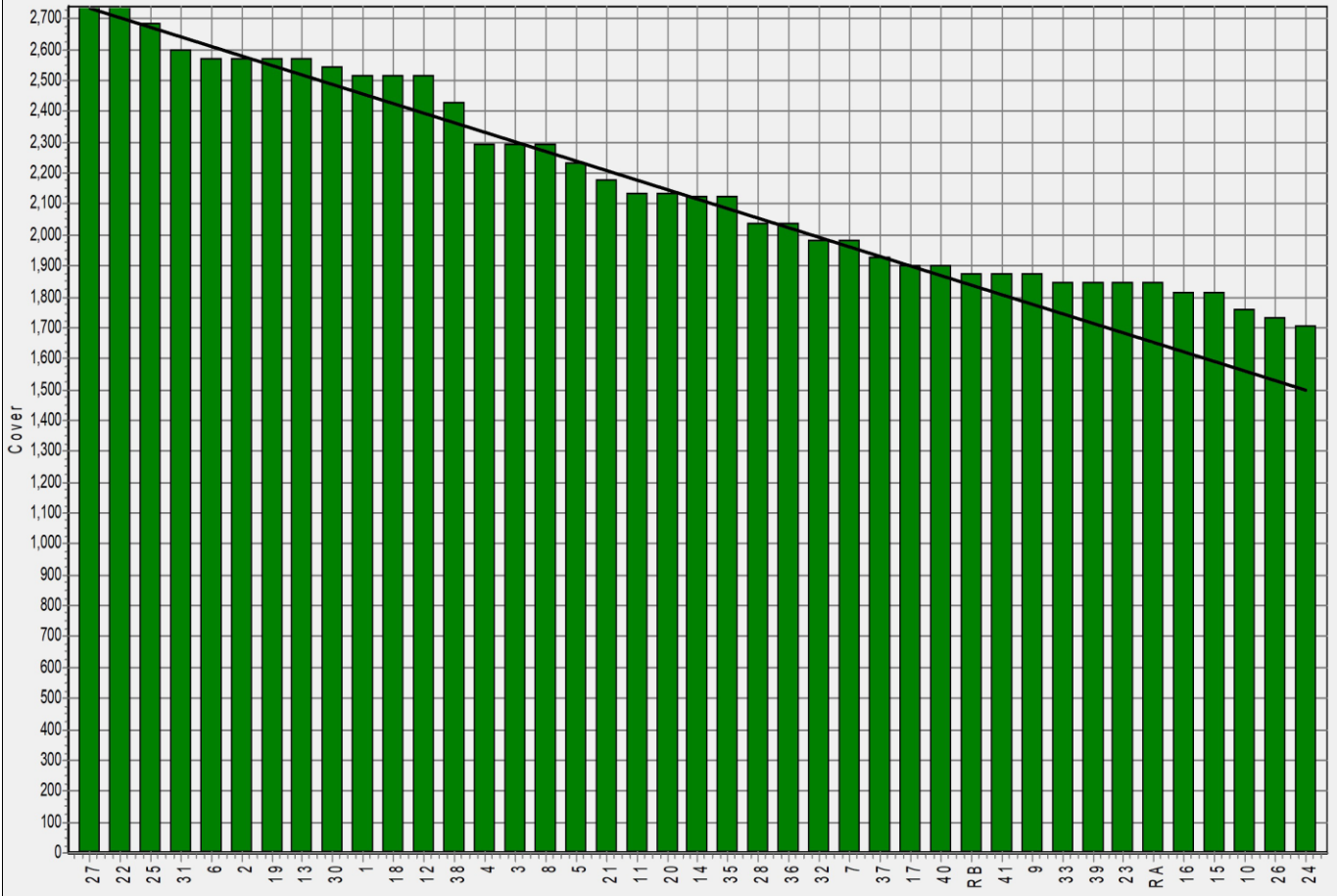
Weekly Pasture Growth Rates



Weekly Soil Temperature



Mawheraiti



Kowhitirangi

