

Westland Monitor Farm Project

Weekly Update as at week ending Wednesday 10 February 2021

CO Comment

In farm systems using low levels of supplementary feed, mature cows should be BCS 4.0 at least 100 days before calving. Cows do not gain BCS in the month before calving because so much energy is required for pregnancy (approximately 60% of the energy needed for pregnancy is required in the last month before calving). This equates to approximately 4-5 kg DM/cow/day for pregnancy. For those with a 1 August planned start of calving this means that by the 23rd of March the majority of the mature cows should score 4 or above. Obviously, not all cows will calve on this day but by having a target in mind for your farm, you can then assess cows that are not meeting this and look specifically at when they will calve and what their individual needs will be. It is important to work through a plan on how targets can be achieved, and it is still early enough to implement a plan to do so. There are several strategies that allow you to achieve BCS targets at calving. Drafting cows based on BCS, age and time of calving, milking OAD and running more than one herd may be appropriate. It is likely that a mix of the strategies will need to be implemented to ensure all cows achieve the BCS targets. There are a range of videos and interactive quizzes to get your eye in for assessing BCS in your herd at <https://www.dairynz.co.nz/animal/body-condition-scoring/how-to-bcs/#bcs>.

Remember there is also an app to help you record the scores in your herd too. It does some nifty stuff like allowing for viewing herd scores and seeing how these change over time, you can score and report on multiple herds, and cows can be flagged for a range of reasons (lame, mastitis etc) and along with their tag numbers can be recorded for later reference.

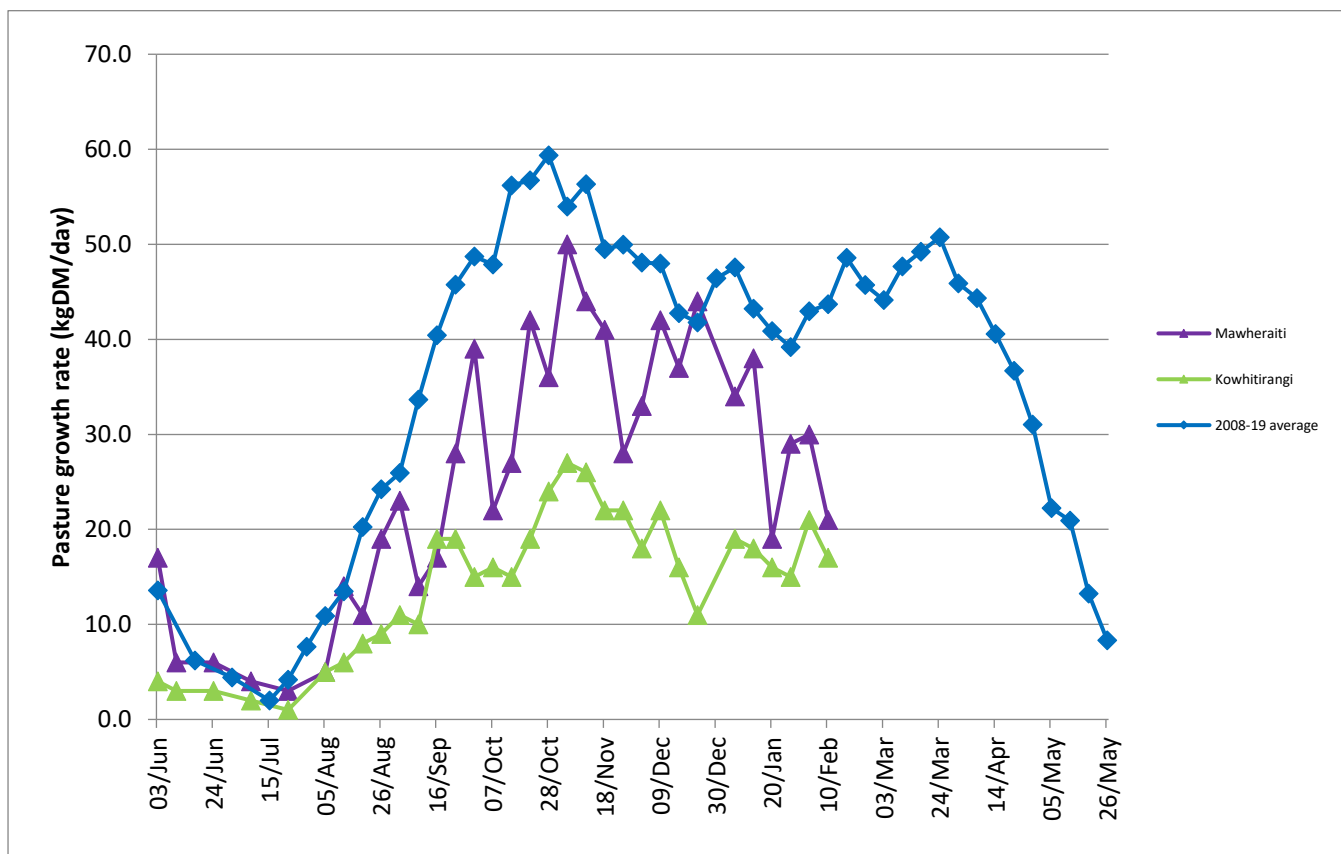
The app also contains the popular BCS field guide, so there is ready access to information and images on accurate assessment. Check your app store by searching for DairyNZ BCS tracker.

Farm Summary

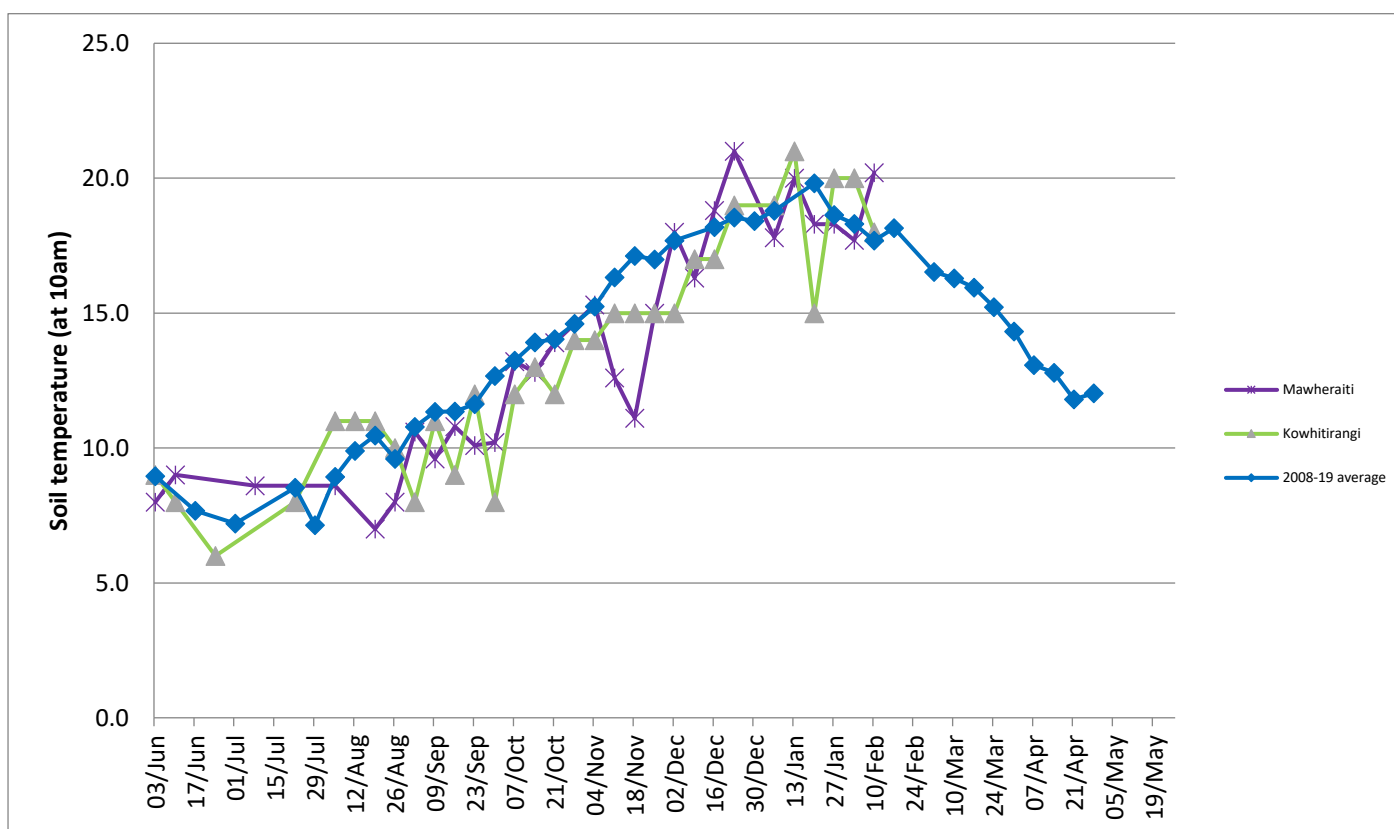
	Mawheraiti	Kowhitirangi
Average cover (kg DM/ha)	1989	1942
APC (3 February)	2022	1962
Rotation length (days)	26	23
Stocking rate	2.3	2.3
Percentage in milk	100%	100%
Milksolids kg/cow	1.62	1.74
Milksolids kg/ha	3.7	4.1
MS/cow (season to date)	312	296
MS/ha (season to date)	734	638
N (kg/ha) year to date	22	-
Current N application rate kg N/ha	176	176
	1 Feb	13 Jan
DM%	20.0	16.0
Pasture ME	12.3	11.2
Pasture NDF	41.7	49.2
Pasture CP	22.3	18.8
Target Intake (kg DM/cow/d)	18	18
Supplement (kg/cow/day)	0.0	2.4
Soil temperature (°C)	20.2	18
Growth Rate (kg DM/day)	21	17
Rainfall	0	58
Conditions for farmwalk	Hot and fine	Pouring rain
Notes:	All irrigation on	

NB: pasture quality data are for 1 sample collected from each farm.

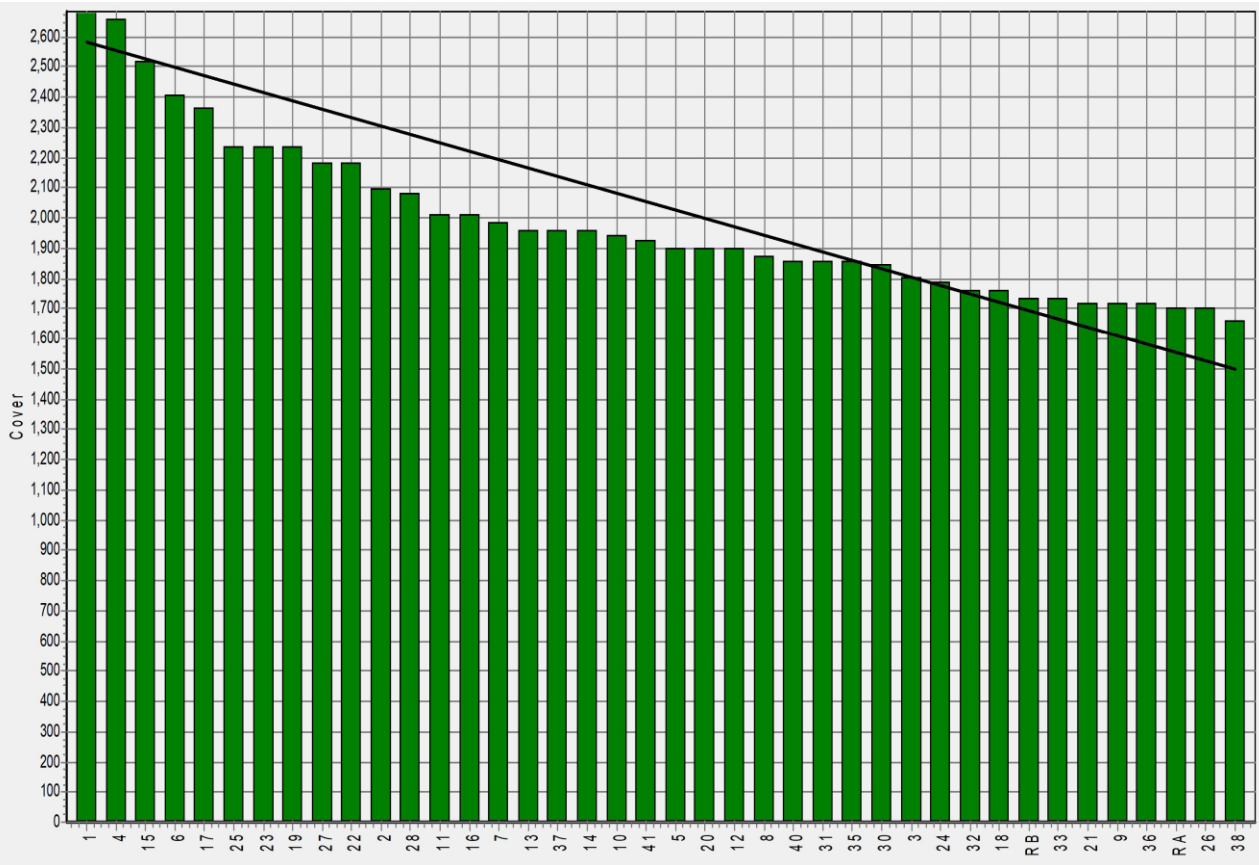
Weekly Pasture Growth Rates



Weekly Soil Temperature



Mawheraiti



Kowhitirangi

