

# Westland Monitor Farm Project

Weekly Update as at week ending Wednesday 10 March 2021

## CO Comment

Last week the West Coast Focus Farm Trust held its annual field days at the monitor farms. Thanks to those that came along to support the monitor farmers and the Trust.

The guest speaker this year was Sarah Dirks who took some time to update attendees on where the policy is at with greenhouse gases and the National Policy Statement for fresh water. Options were explored around what practical things farmers could focus on to reduce their emissions footprint including using effluent efficiently, improving reproductive performance and removing nonproductive animals from the farm system to name a few.

The important take home message was to get to know the footprint of your own farm and analyse where there are potential areas for improvement.

The [calculator on the DairyNZ website](#) can help get you started to know your numbers.

The West Coast Focus Farm Trust would like to thank its industry partners, Westland Milk Products, DairyNZ, CRV Ambreed and Ravensdown for their continued support to keep the project running.

Huge thanks to the monitor farmers for opening their businesses to the community too. They put in a lot of effort to record their data which makes the analysis possible for these field days.

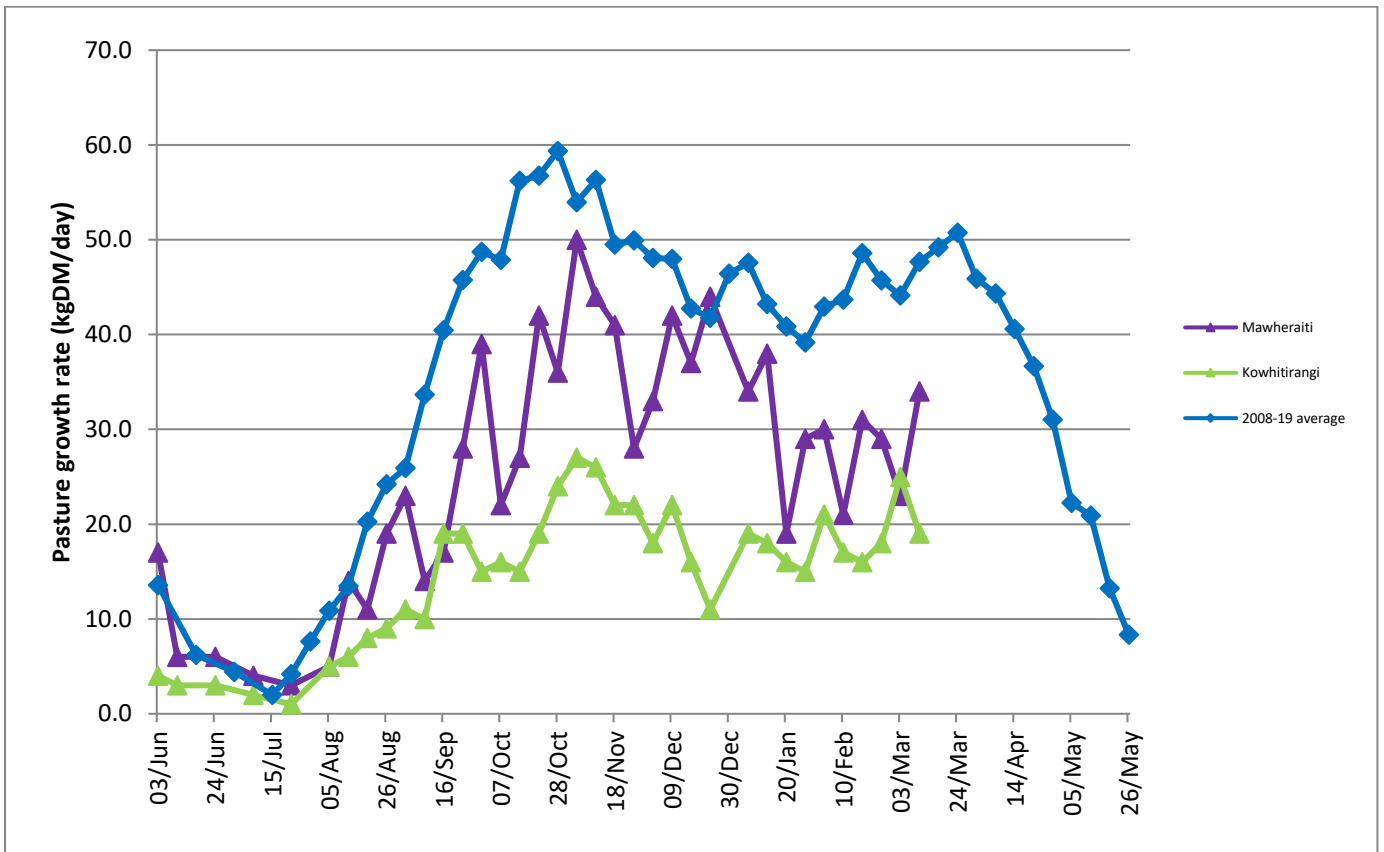
If you or someone you know would like to participate in the West Coast Focus Farm Trust to help continue to adapt the project with the future of West Coast farmers in mind, then get in touch.

## Farm Summary

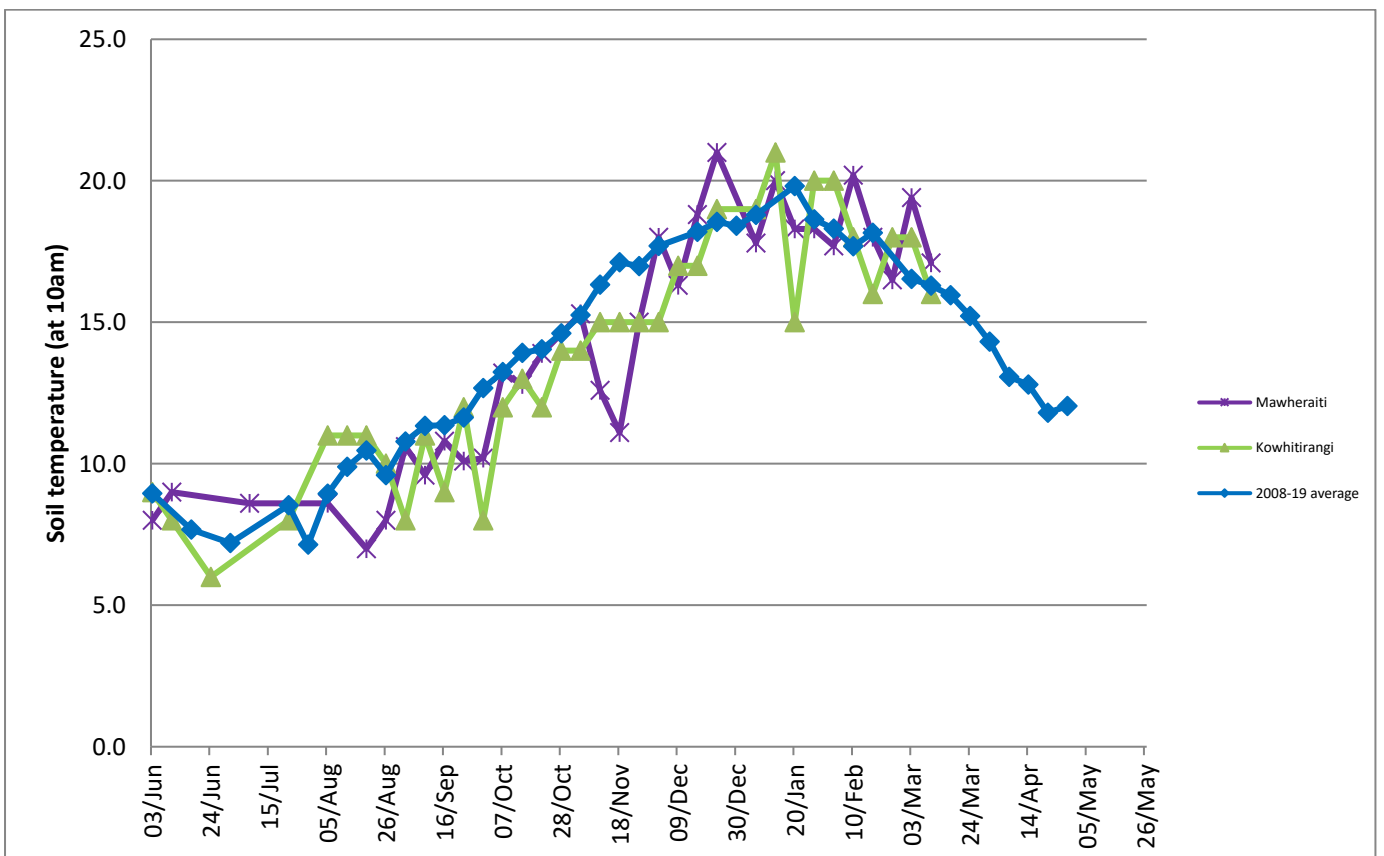
	Mawheraiti	Kowhitirangi
Average cover (kg DM/ha)	2018	2000
APC (3 March)	1984	2000
Rotation length (days)	26	27
Stocking rate	2.5	2.3
Percentage in milk	100%	100%
Milksolids kg/cow	1.59	1.46
Milksolids kg/ha	3.7	3.4
MS/cow (season to date)	357	339
MS/ha (season to date)	841	729
N (kg/ha) year to date	201	194
Current N application rate kg N/ha	22	9
	1 March	3 March
DM%	13.4	11.6
Pasture ME	11.4	11.7
Pasture NDF	47.3	51.8
Pasture CP	27.2	29.0
Target Intake (kg DM/cow/d)	18	18
Supplement (kg/cow/day)	0	2.4
Soil temperature (°C)	17.1	16
Growth Rate (kg DM/day)	34	19
Rainfall	54	170
Conditions for farmwalk	Wet day	Very wet
Notes:	All irrigation off	Great turnout of interested farmers at Jeremy and Anna's on a wet day. Stu and Deb's tomorrow

NB: pasture quality data are for 1 sample collected from each farm.

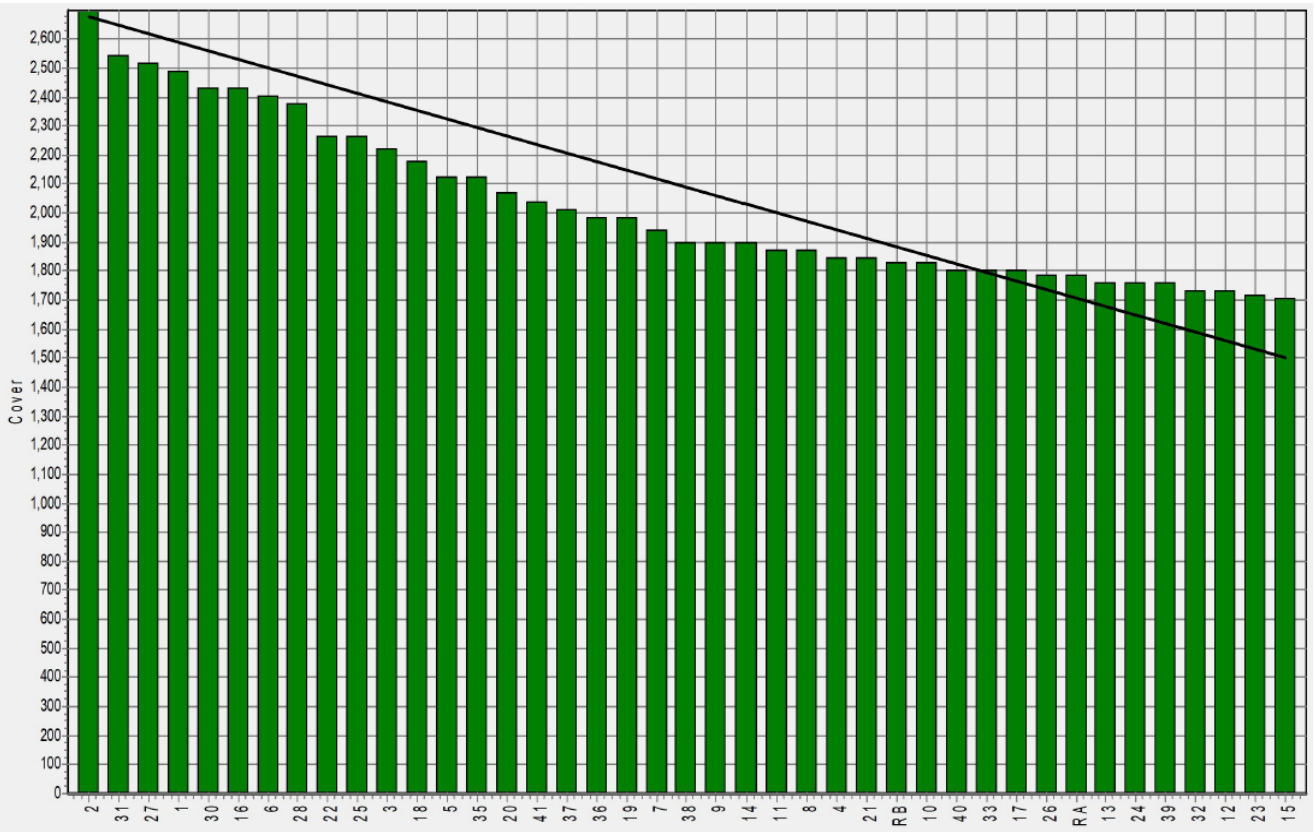
## Weekly Pasture Growth Rates



## Weekly Soil Temperature



### Mawheraiti



### Kowhitirangi

