

Westland Monitor Farm Project

Weekly Update as at week ending Wednesday 11 November 2020

CO Comment

Last week we managed to see some more sunshine hours and the hope is that the frequency of sunshine will continue to increase. This should start to boost grass growth rates along with a rise in grass sugar levels, resulting in more energy to the cows. Cow heats will become stronger and more visible for ease of detection. For those that recorded pre-mating heats, take note now who has not cycled – are they early calvers who have not come up yet, or later calving cows that are still under 49 days since they calved? For those early calved/anoestrus cows, talk to a vet about intervention methods. Try to focus on getting more energy into the cow so they can direct it towards reproductive processes while still achieving production.

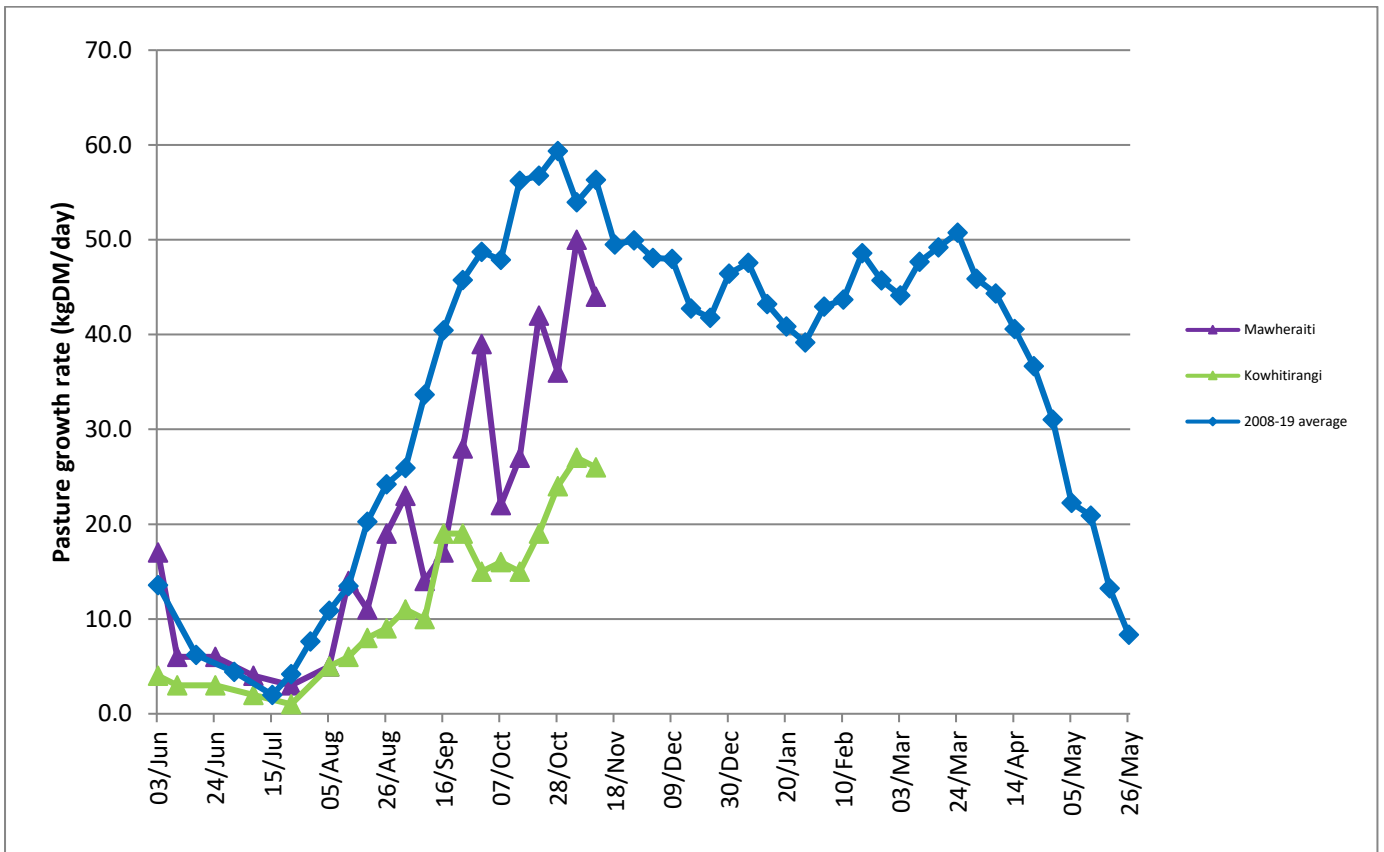
Many farms will now be completing the first three weeks of mating, so now's a good time to check how things are tracking. The target three-week submission rate is 90%. Keep everyone focussed on heat detection – reapply heat detection aids (paint or otherwise). Keep up with regular paddock checks too. It will be the extra little details that will make a difference to your mating results.

Farm Summary

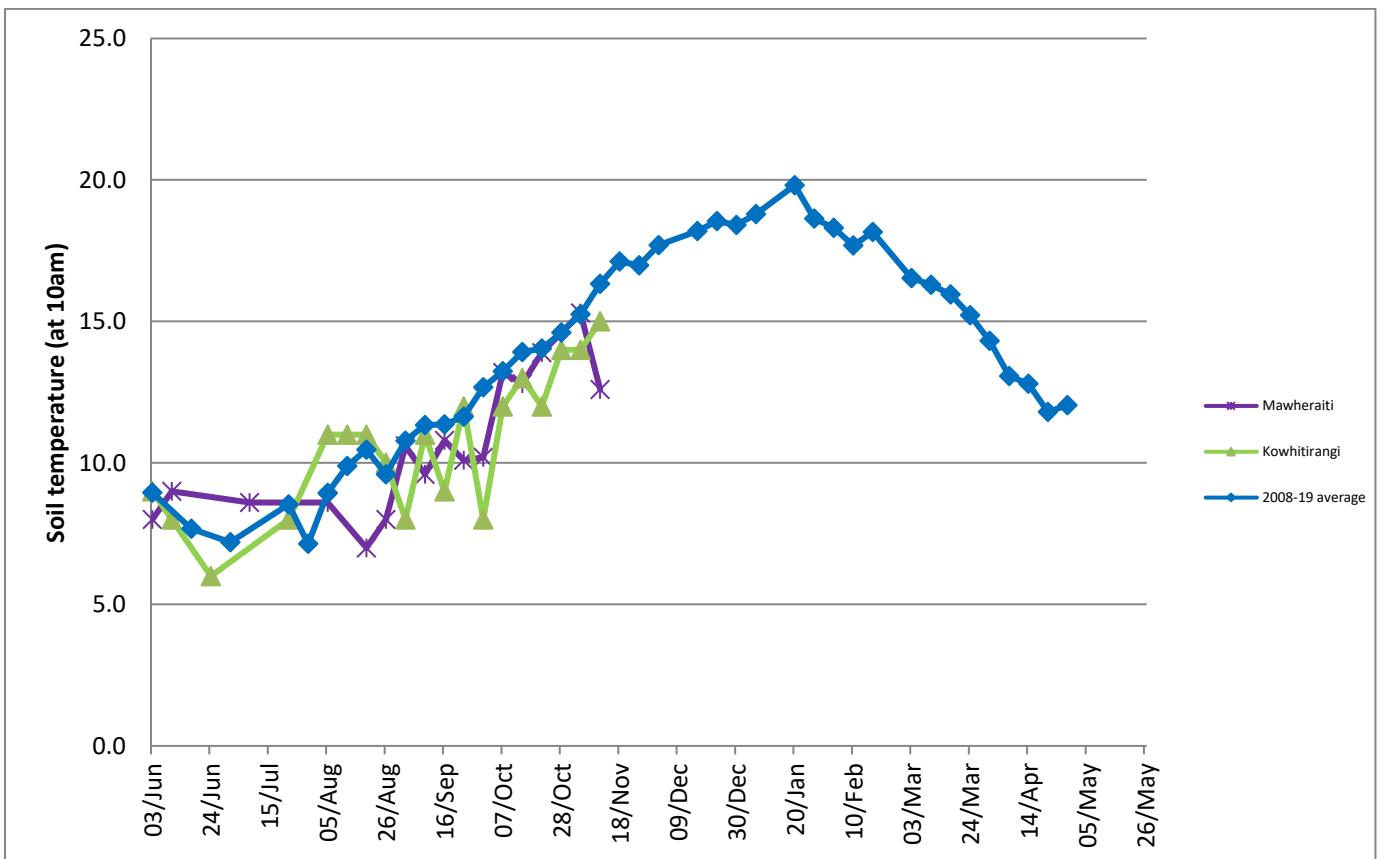
	Mawheraiti	Kowhitirangi
Average cover (kg DM/ha)	2276	2102
APC (4 November)	2169	2072
Rotation length (days)	24	27
Stocking rate	2.3	2.2
Percentage in milk	100%	100%
Milksolids kg/cow	2.13	1.85
Milksolids kg/ha	4.9	4.1
MS/cow (season to date)	138	137
MS/ha (season to date)	349	306
N (kg/ha) year to date	91	70
Current N application rate kg N/ha	22	-
	2 Nov	4 Nov
DM%	13.6	10.9
Pasture ME	11.4	11.4
Pasture NDF	51.1	54.0
Pasture CP	24.6	27.6
Target Intake (kg DM/cow/d)	18	18
Supplement (kg/cow/day)	1.3	2.9
Soil temperature (°C)	12.6	15
Growth Rate (kg DM/day)	44	26
Rainfall	79	100
Conditions for farmwalk	Slight frost, beautiful day	Warm and sunny

NB: pasture quality data are for 1 sample collected from each farm

Weekly Pasture Growth Rates



Weekly Soil Temperature



Mawheraiti



Kowhitirangi

