

Westland Monitor Farm Project

Weekly Update as at week ending Wednesday 12 May 2021

CO Comment

May is a month of variable growth rates, as I'm sure has been detected with the mild start to the month changing to the cooler temperatures of the last week to 10 days. Continue to regularly monitor pasture cover with a farm walk, continuation in the cooling of ground temperatures will bring pasture growth rates back. The availability of winter supplement for purchase is steadily diminishing, if it hasn't already gone, so the opportunity to rely on bought in feed to plug any feed gaps won't remain for too much longer.

Make sure you have a plan for drying off the herd and have revised your autumn feed budget with figures based on what you actually have been growing. Carefully consider the urge to capture those last few kilograms of milksolids at the current payout. Confirm your dry cow therapy options with your veterinarian. Give priority to drying off earlier calving cows as they will have less time over the dry period to put on the required body condition.

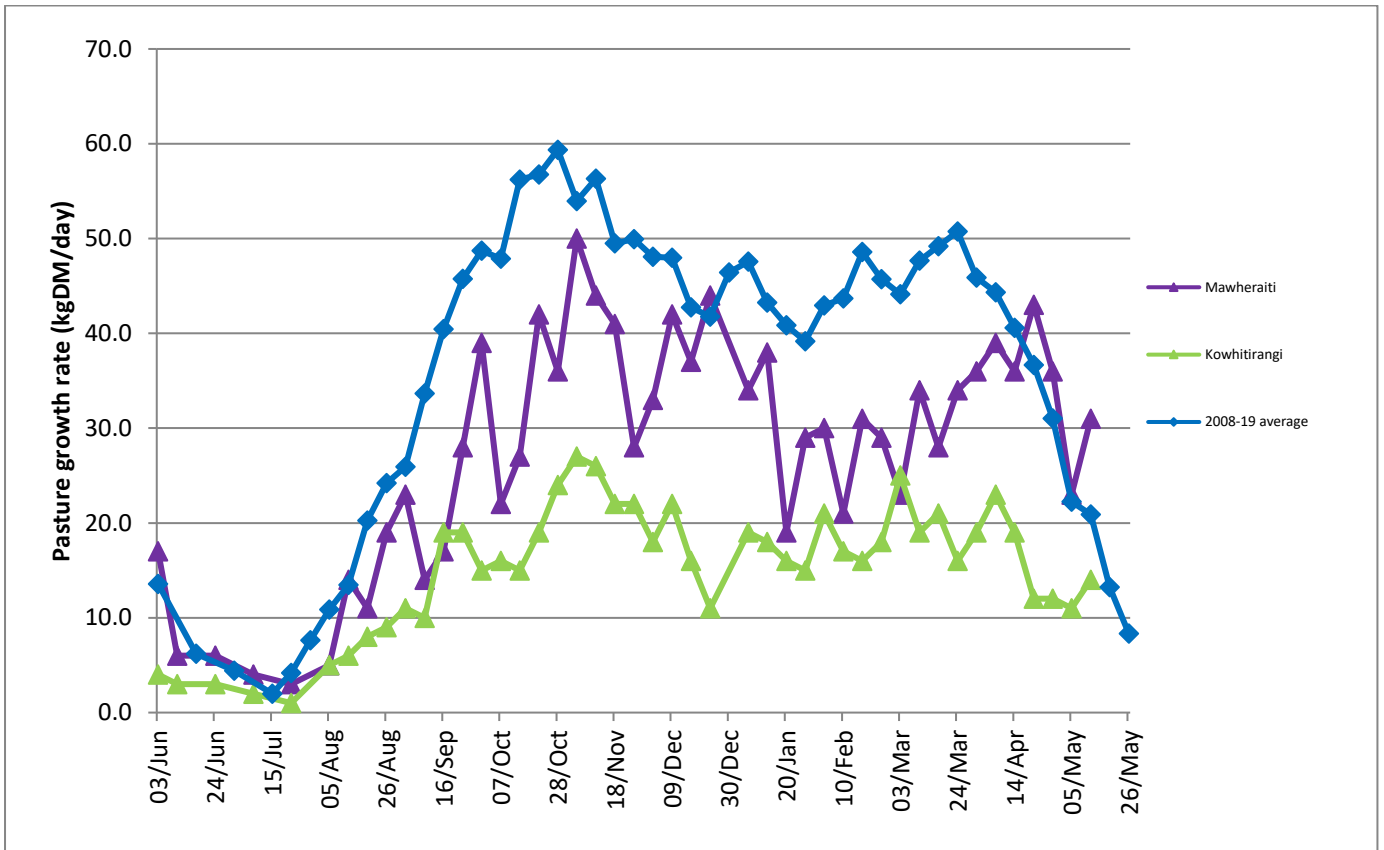
It is one thing to have enough supplements in your feed budget and suitable average pasture cover, but do you have enough time for cows to physically gain the body condition they need for calving. The focus does need to go on making sure the farm is set up adequately for next season – check your feed budget to make sure you stay on track, whatever decision you end up making.

Farm Summary

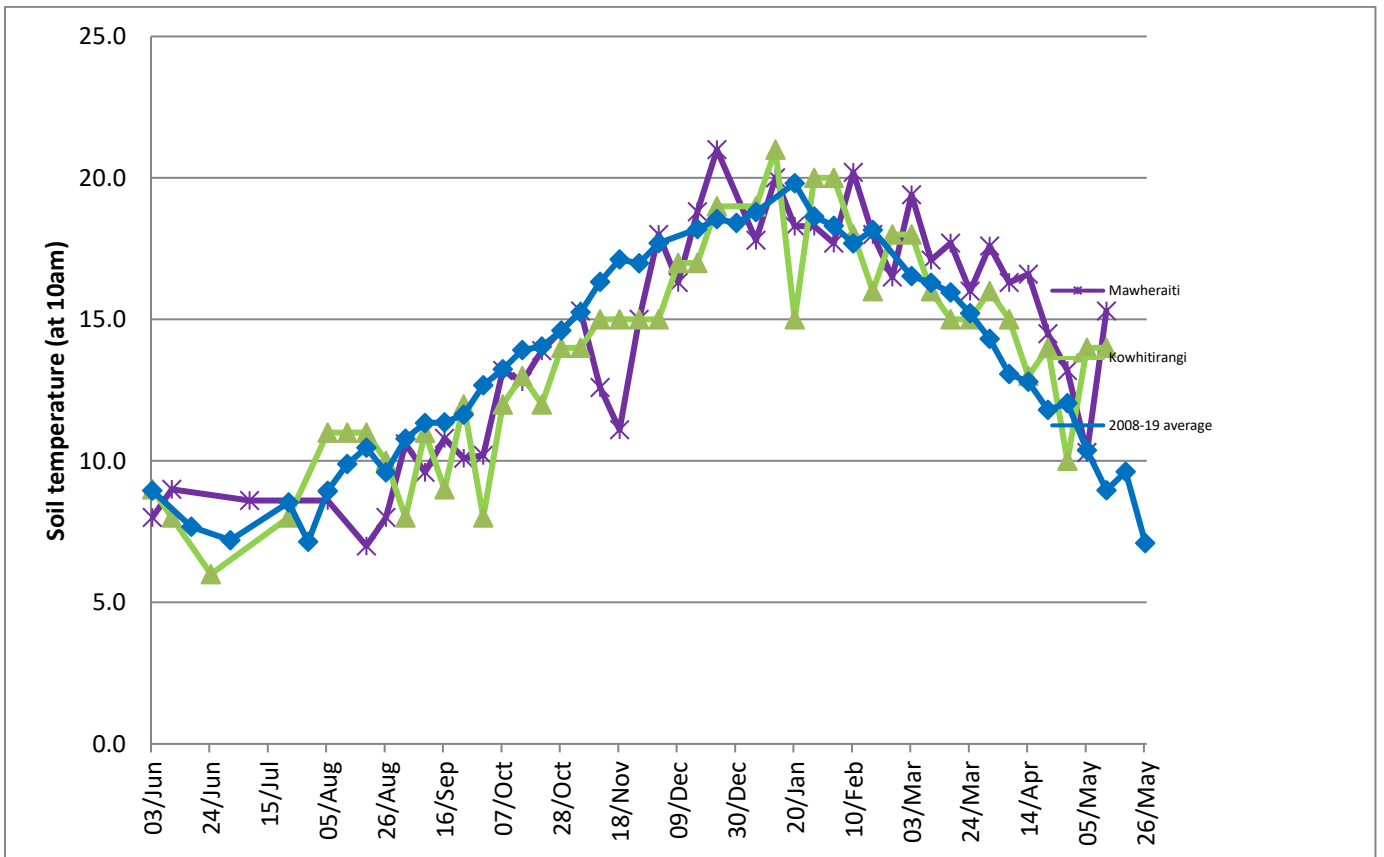
	Mawheraiti	Kowhitirangi
Average cover (kg DM/ha)	2127	1885
APC (5 May)	2139	1854
Rotation length (days)	30	32
Stocking rate	2.3	2.2
Percentage in milk	100%	100%
Milksolids kg/cow	1.31	1.19
Milksolids kg/ha	2.8	2.6
MS/cow (season to date)	448	421
MS/ha (season to date)	1059	906
N (kg/ha) year to date	252	212
Current N application rate kg N/ha		
	3 May	12 April
DM%	9.6	9.8
Pasture ME	12.5	11.8
Pasture NDF	44.1	46.5
Pasture CP	27.1	26.0
Target Intake (kg DM/cow/d)	18	18
Supplement (kg/cow/day)	4.2	5.9
Soil temperature (°C)	15.3	14
Growth Rate (kg DM/day)	31	14
Rainfall	32	210
Conditions for farmwalk	Has been raining heavily, but fine (just) and warm for farm walk	Rained off today, farm very wet
Notes:	10 culls gone, feeding a bit more pk and silage as needed; cows condition improving milk, holding; had 3 nights in Christchurch	Lots of rain at Hart's. Jeremy feeding an extra 95 r2s plus calves with farm absolutely sodden. Roll on Jun 1 st !

NB: pasture quality data are for 1 sample collected from each farm.

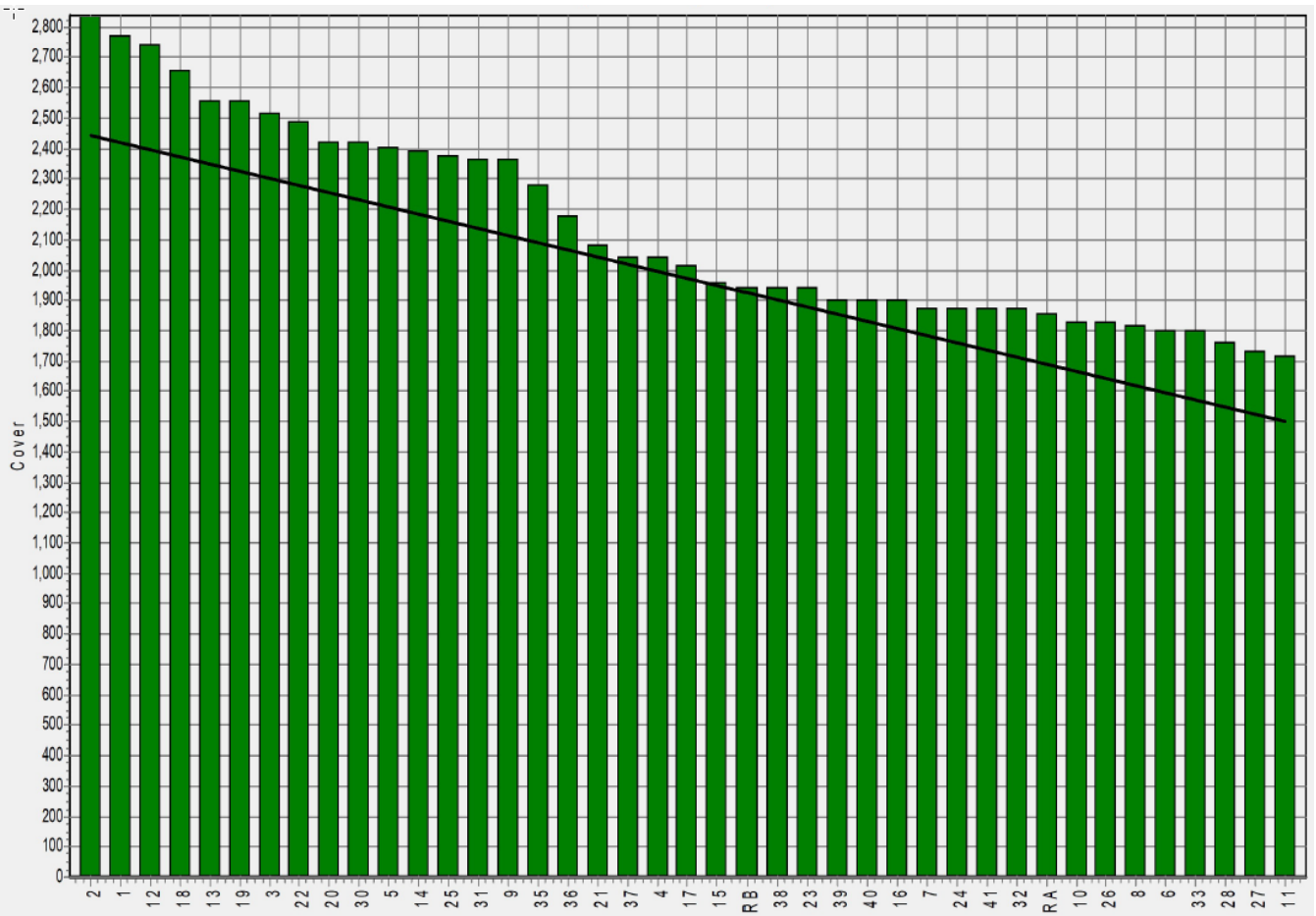
Weekly Pasture Growth Rates



Weekly Soil Temperature



Mawheraiti



Kowhitirangi

