

# Westland Monitor Farm Project

**Weekly Update** as at week ending Wednesday 13 January 2021

## CO Comment

Hopefully, everyone has had a great Christmas and New Year and managed to get a little break over the holiday. If you did not manage to get a break, then I hope there is one planned or at the very least you managed to enjoy yourself by eating your weight in Christmas goodies possibly gaining a body condition score (BCS) in the process!

Whilst we are on the topic of BCS, we must preserve this (in the cows) as we have another 8-10 weeks of this year available before body condition score thresholds will start becoming important for next seasons production.

Vulnerable cows (young, old etc) will be the first to show signs of BCS loss. Consider a change in milking frequency for this group of animals. If this is not an option, make sure that passengers in the herd are not eating feed that could be prioritised for these animals. Identify and remove culls to preserve feed for the 'core' milking herd. If considering moving your pregnancy testing forward to identify empty cows it is important to discuss this with the vets first.

Planning for winter is paramount. Keep in touch with suppliers to ensure the availability of winter feed, if needed.

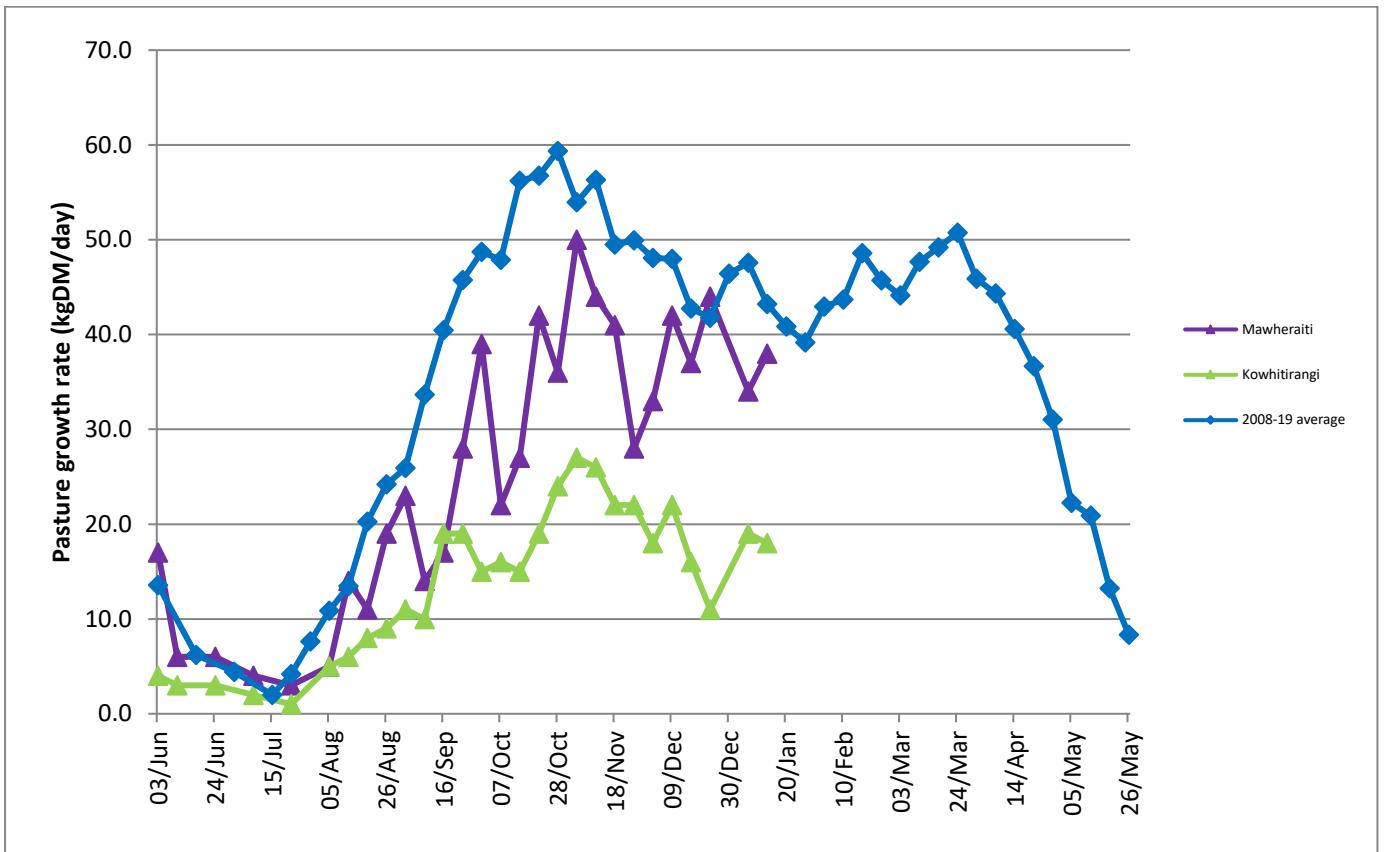
Taking a bit of time to reassess the plan (or make one) for the coming months is time well spent.

## Farm Summary

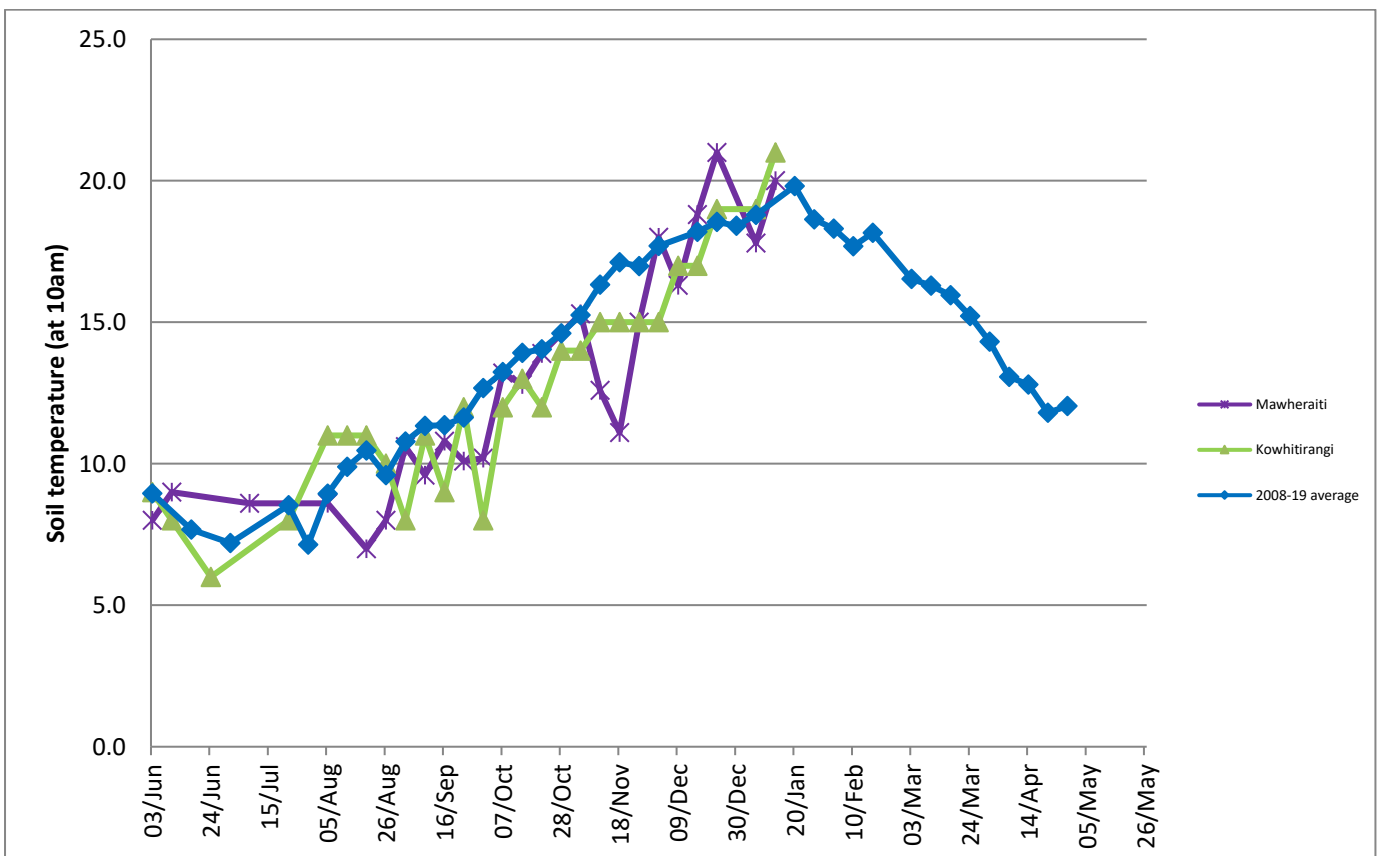
	Mawheraiti	Kowhitirangi
Average cover (kg DM/ha)	2111	1968
APC (16 December)	2149	1911
Rotation length (days)	23	26
Stocking rate	2.3	2.5
Percentage in milk	100%	100%
Milksolids kg/cow	1.71	1.71
Milksolids kg/ha	4.0	3.6
MS/cow (season to date)	266	250
MS/ha (season to date)	623	539
N (kg/ha) year to date	150	153
Current N application rate kg N/ha	22	-
	30 Nov	2 Dec
DM%	16.3	15.4
Pasture ME	11.9	12.0
Pasture NDF	44.5	42.0
Pasture CP	19.3	26.7
Target Intake (kg DM/cow/d)	18	18
Supplement (kg/cow/day)	0	2.4
Soil temperature (°C)	20.0	21.0
Growth Rate (kg DM/day)	38	18
Rainfall	5	18
Conditions for farmwalk	Very hot	Very hot

NB: pasture quality data are for 1 sample collected from each farm

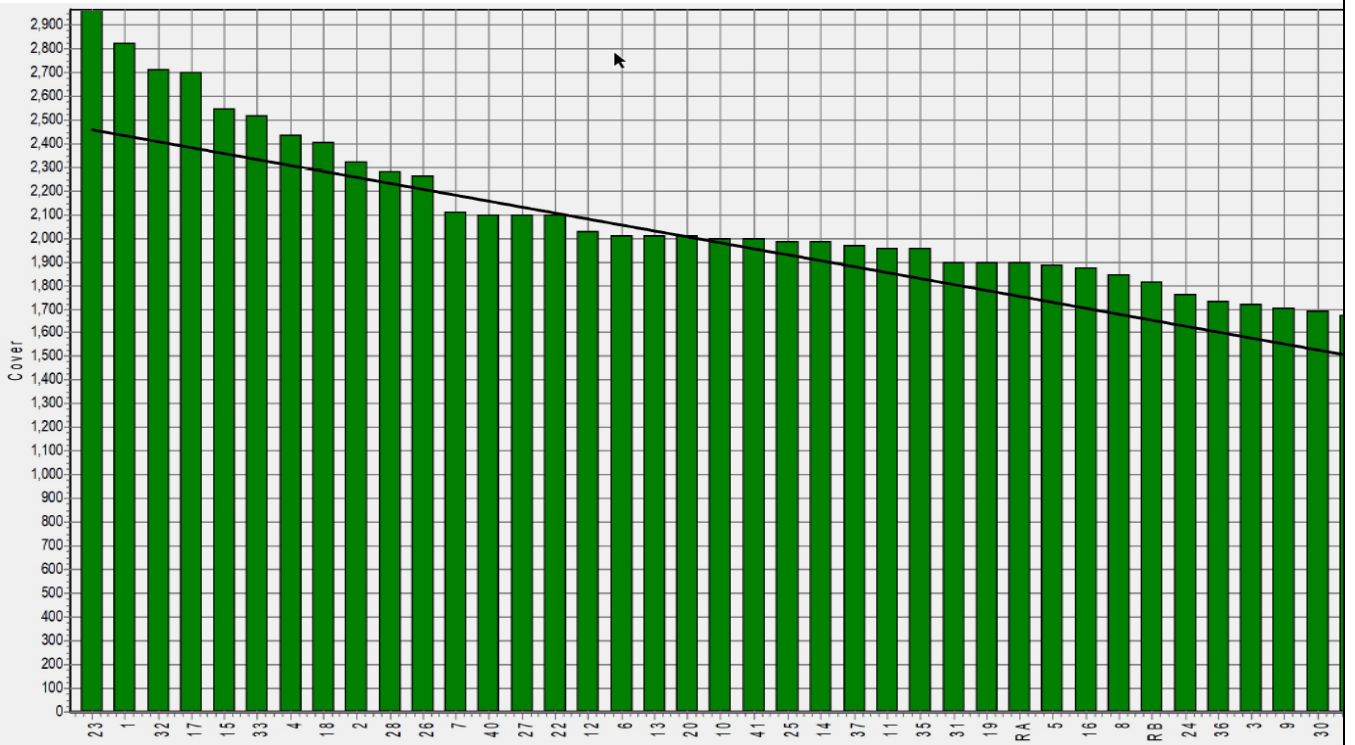
## Weekly Pasture Growth Rates



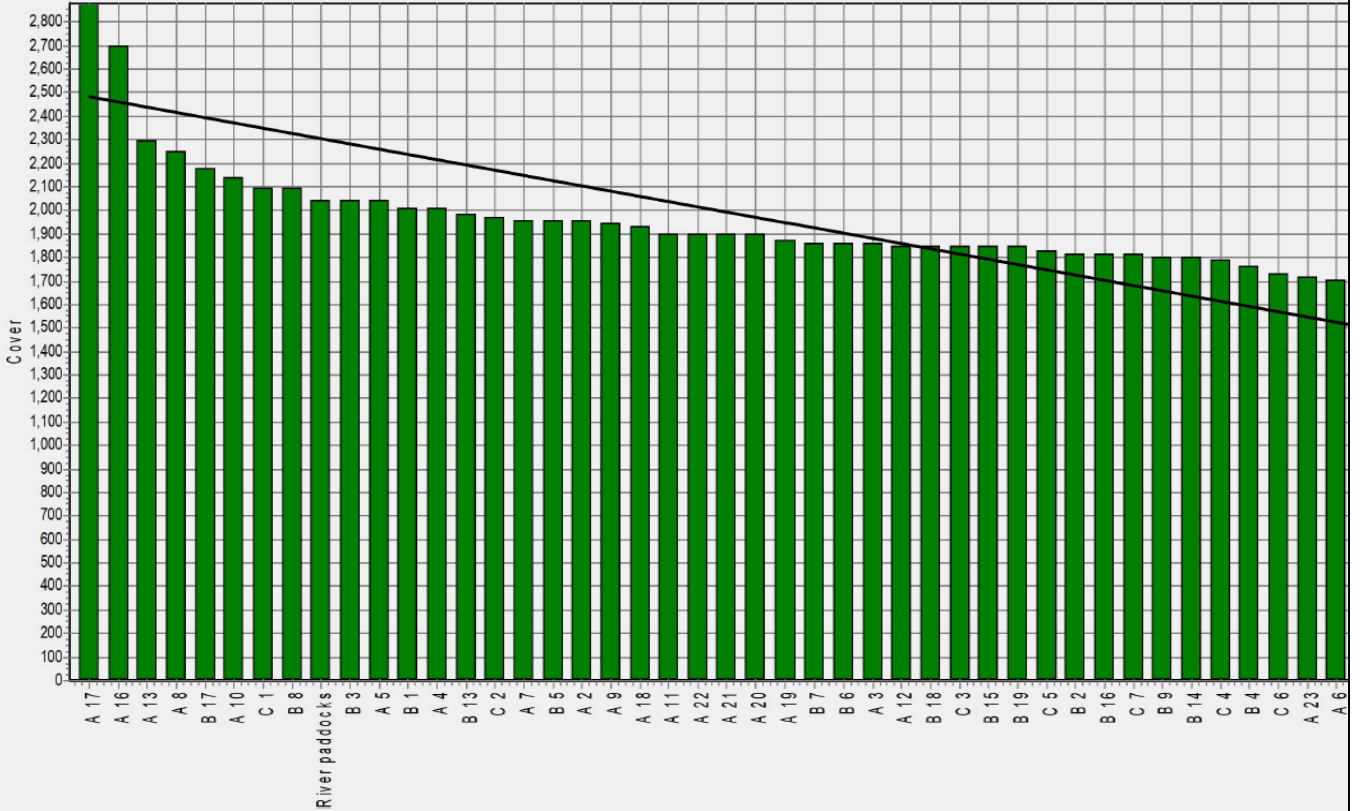
## Weekly Soil Temperature



## Mawheraiti



## Kowhitirangi





Kowhitirangi

Description	Date	RPM	% DM	% Prot	% Lipid	% ADF	% NDF	Sol Sugar	OMD %	MJME /kg
Paddock 17b	10/6/20	10.8	13.6	28.3	3.8	17.4	33.6	14.0	88.3	12.9
Paddock 13b	7/7/20	8.0	11.8	29.4	4.1	21.7	44.6	10.0	84.6	12.3
Paddock 3c	5/8/20	10.2	11.7	30.9	4.3	23.5	45.9	7.1	81.3	11.9
Paddock 4a	2/9/20	11.8	17.3	25.8	4.2	21.5	42.3	12.0	>85	>12.7
Paddock 1	14/10/20	9.7	12.9	31.7	4.0	23.9	49.0	6.8	83.2	12.1
Paddock 19b	4/11/20	11.8	10.9	27.6	3.6	27.4	54.0	3.9	78.3	11.4
Paddock 11a	2/12/20	11.4	15.4	26.7	3.3	24.2	42.0	7.9	82.2	12.0

\* Test analytes which have occurred as outliers on the NIRS calibration are indicated by \* and should be treated as an approximation only.