

# Westland Monitor Farm Project

Weekly Update as at week ending Wednesday 17 February 2021

## CO Comment

DairyNZ's project Step Change is a five-year project which aims to ensure that by 2025 farm businesses are profitable, are on track to meet 10% methane target in 2030, are working toward meeting regulated N limits, and farmers have confidence their business and future.

Being prepared for the future means 'knowing your numbers' in relation to both profit and environmental performance indicators to give clarity on potential adaption required for your farm system.

There are four key numbers that will help you review whether your business and farm system are future ready.

Operating profit per hectare

Debt to asset ratio

Tonnes of methane emissions per hectare

Purchased N surplus per hectare

Knowing your numbers is an important first step in assessing and addressing required change on farm and benchmarking your starting point to demonstrate the effectiveness of any change.

DairyNZ can assist you with these numbers specific to your farm and assess your plan of attack.

For more information on some of the metrics required and getting to know your numbers visit

<https://www.dairynz.co.nz/environment/step-change/know-your-numbers/>

The West Coast Focus Farm Trust Monitor Farm field days will be looking at this topic in more depth with guest speaker Sarah Dirks, DairyNZ Step Change Lead coming to discuss these metrics with farmers. To find out more about these events and others head to

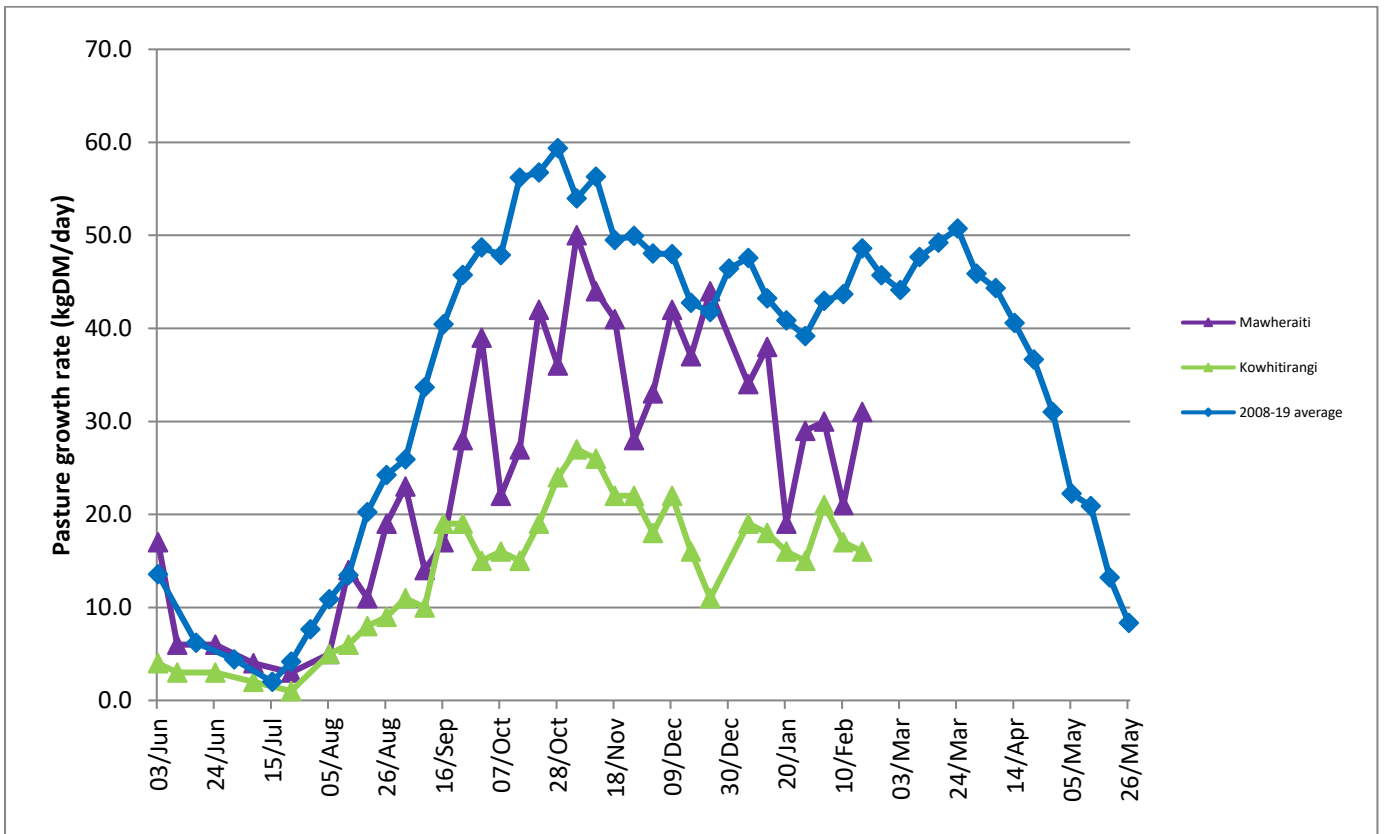
<https://www.dairynz.co.nz/events/?region=5454>

## Farm Summary

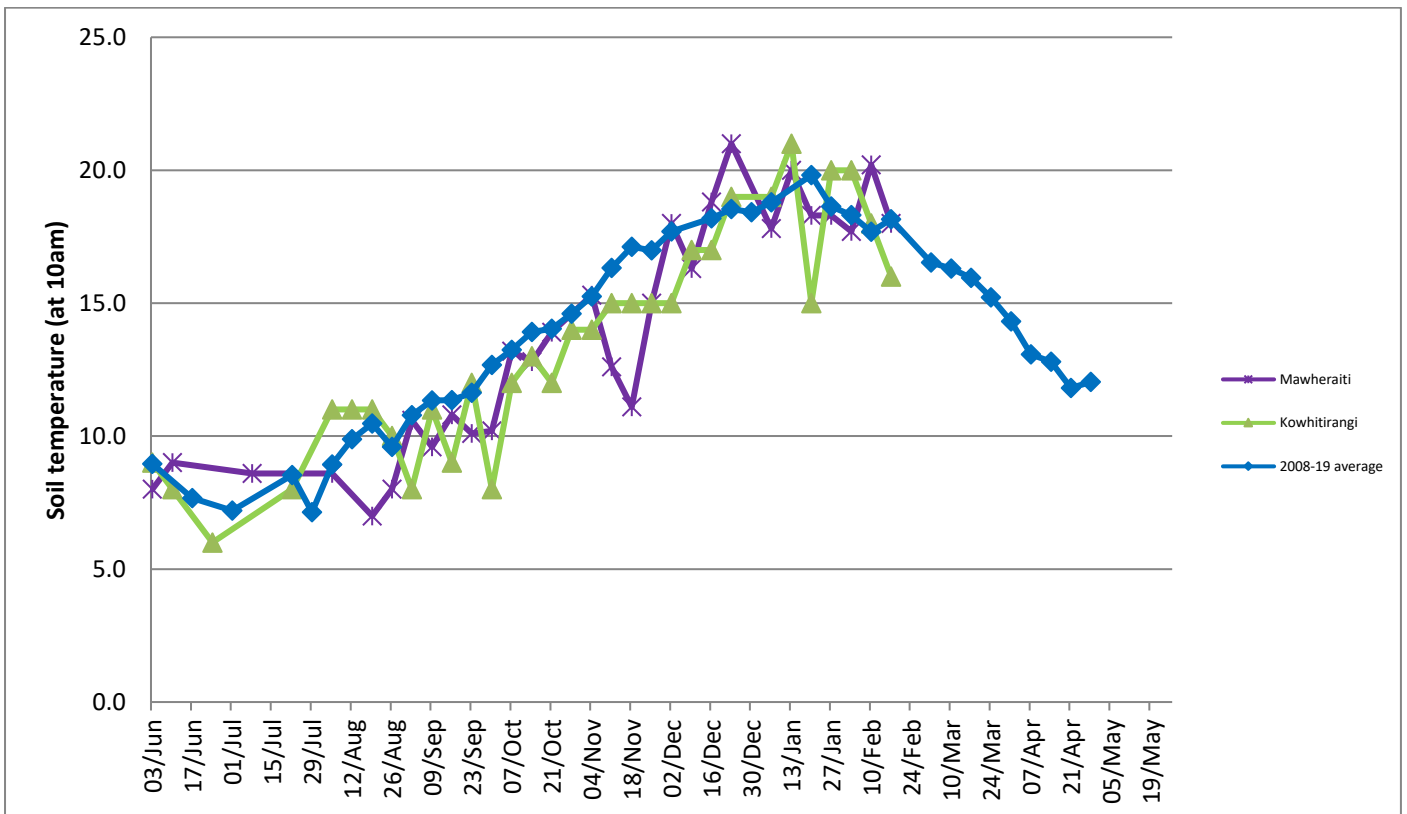
	Mawheraiti	Kowhitirangi
Average cover (kg DM/ha)	1970	1919
APC (10 February)	1989	1942
Rotation length (days)	26	25
Stocking rate	2.3	2.3
Percentage in milk	100%	100%
Milksolids kg/cow	1.61	1.50
Milksolids kg/ha	3.8	3.5
MS/cow (season to date)	323	307
MS/ha (season to date)	761	660
N (kg/ha) year to date	22	-
Current N application rate kg N/ha	182	176
	1 Feb	13 Jan
DM%	20.0	16.0
Pasture ME	12.3	11.2
Pasture NDF	41.7	49.2
Pasture CP	22.3	18.8
Target Intake (kg DM/cow/d)	18	18
Supplement (kg/cow/day)	1.0	2.4
Soil temperature (°C)	18	16
Growth Rate (kg DM/day)	31	16
Rainfall	40	18
Conditions for farmwalk	Hot and fine	Hot and fine
Notes:	Irrigation on, but has been raining	Farm looking dry! Jeremy is making good use of dry weather as in all pks getting a good makeover

NB: pasture quality data are for 1 sample collected from each farm.

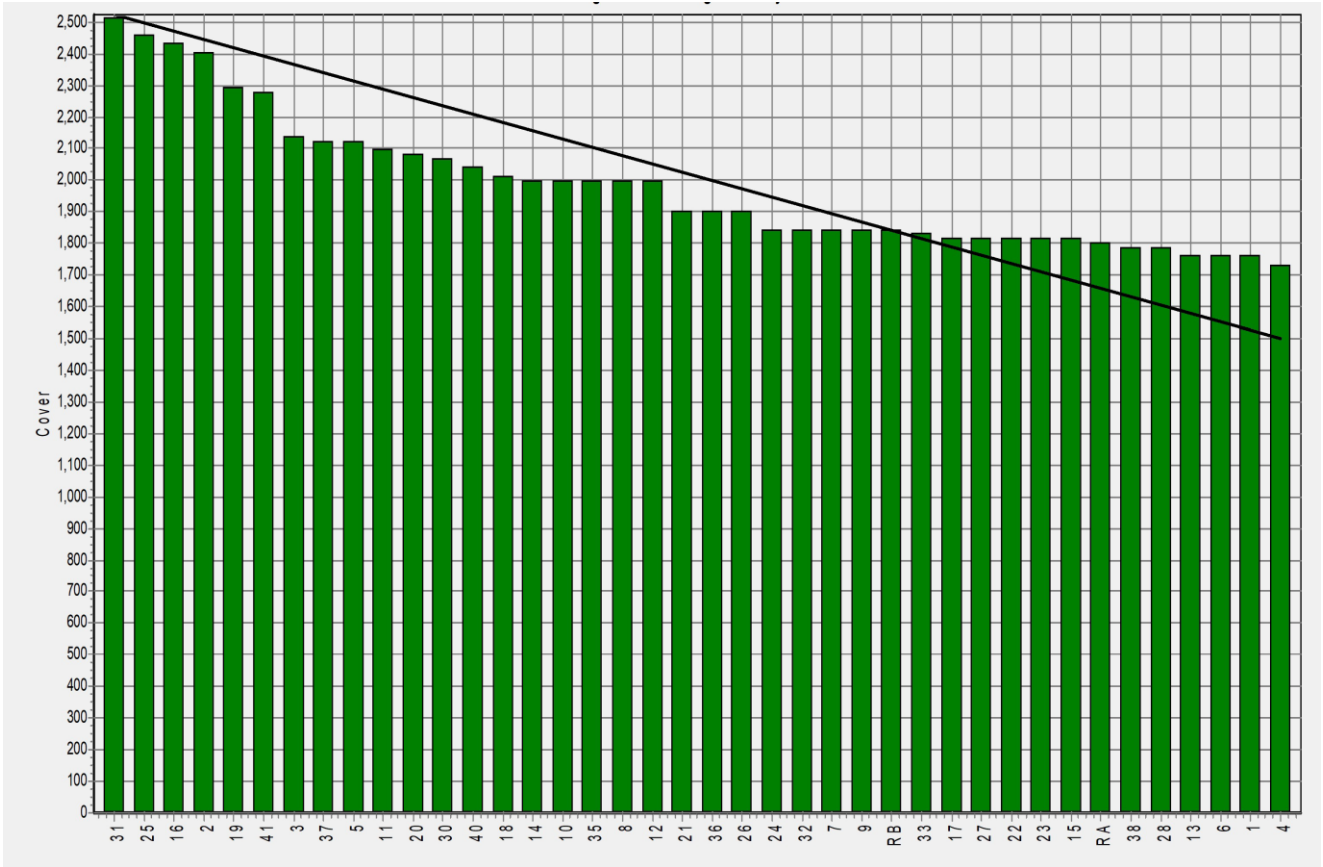
## Weekly Pasture Growth Rates



## Weekly Soil Temperature



## Mawheraiti



## Kowhitirangi

