

# Westland Monitor Farm Project

Weekly Update as at week ending Wednesday 17 March 2021

## CO Comment

On Thursday night the West Coast/Top of the South Dairy Industry awards were held at Shantytown. A huge effort gets put in every year from the committee members and sponsors to make this event happen. Entrants too put in a great deal of effort to present themselves, their skills, and their businesses to judges. Judging is a hugely positive process for these entrants where they acquire feedback on areas they are doing well in and areas where they have an opportunity to improve.

Congratulations to all the entrants, finalists, and winners. Results are available at

<https://dairyindustryawards.co.nz/results-2/regional-results/west-coasttop-of-the-south-2/>

On Wednesday DairyNZ held a discussion group at Whataroa. It was a very well attended day and everyone shared their challenges and opportunities they had or are facing for the season. Some took home suggestions from others and it is nice to see farmers helping farmers. We heard from Rhianna at Landcare Trust regarding catchment groups including setting them up, their purpose and ability to help the community with the environmental challenges and opportunities on the horizon. The strength in numbers of a catchment group allows for real change to happen and voices to be heard. Landcare Trust is bringing Lloyd McCall from the Pomehaka Catchment group on a roadshow across the West Coast to discuss the successes they have had and the value these groups can add to a community.

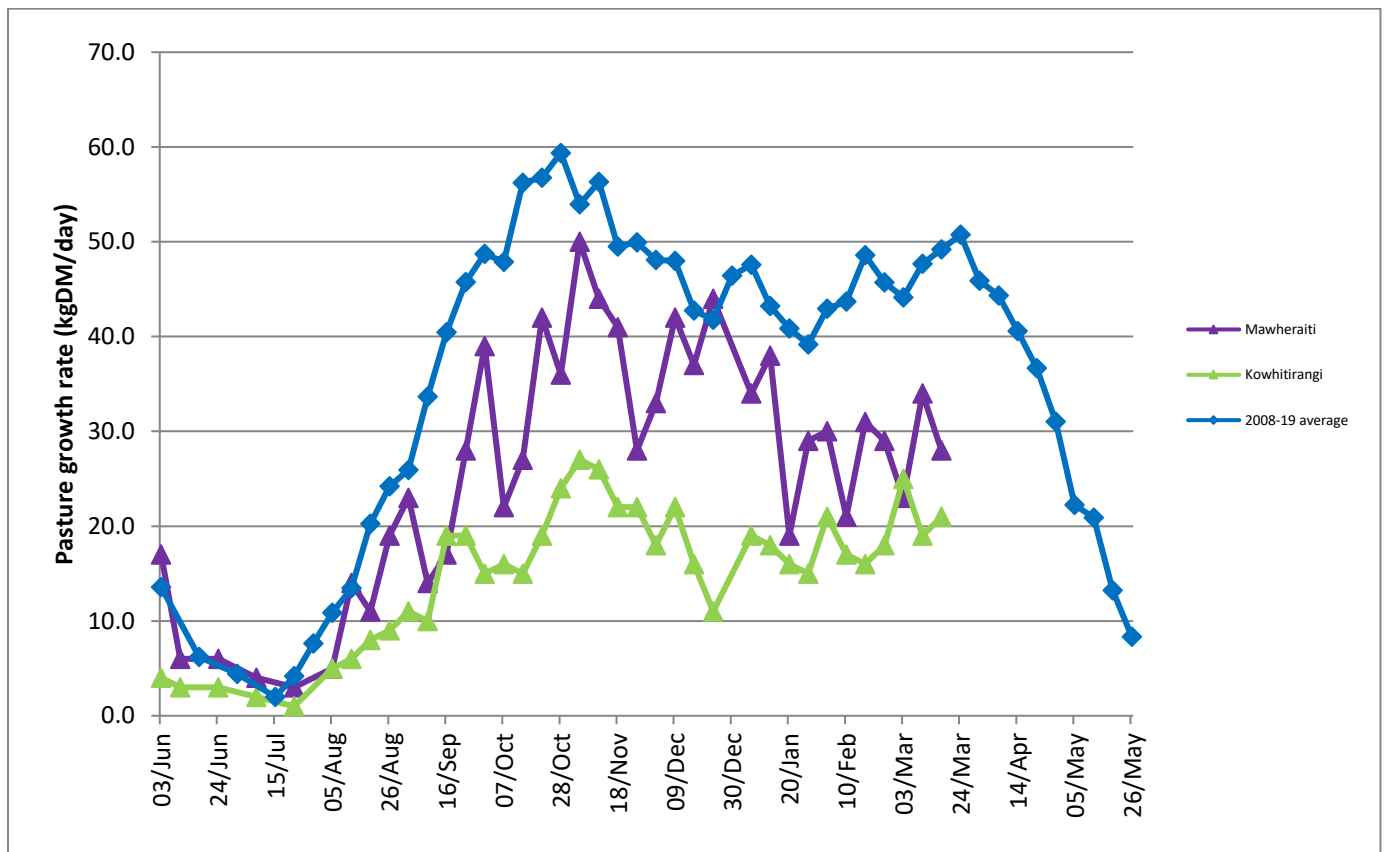
Dates and venues for these events are to be confirmed but keep an eye out on the West Coast Focus Farm Trust Facebook Page and other communications.

## Farm Summary

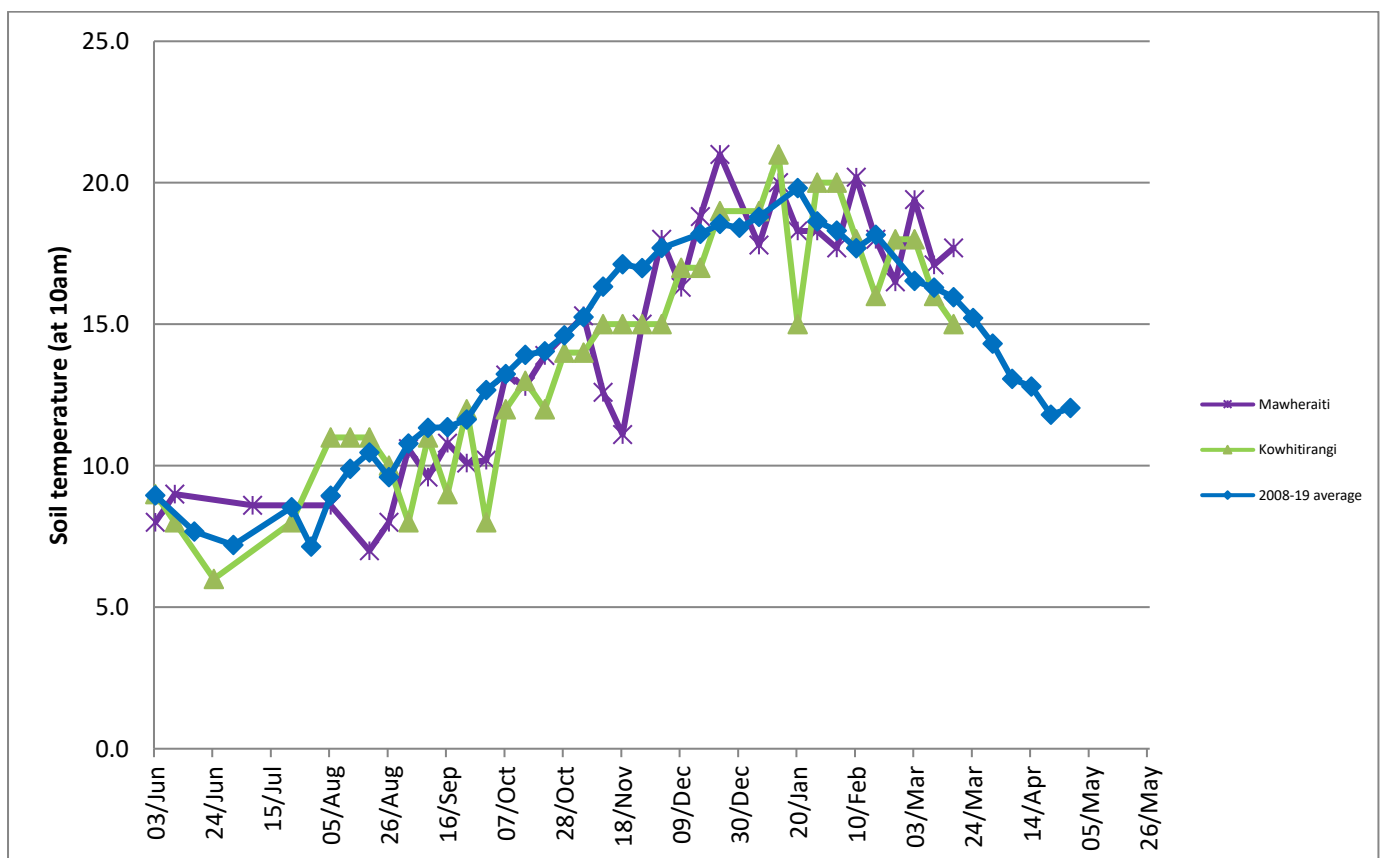
	Mawheraiti	Kowhitirangi
Average cover (kg DM/ha)	2039	2020
APC (10 March)	2018	2000
Rotation length (days)	27	34
Stocking rate	2.5	2.3
Percentage in milk	100%	100%
Milksolids kg/cow	1.54	1.40
Milksolids kg/ha	3.6	3.3
MS/cow (season to date)	368	348
MS/ha (season to date)	867	750
N (kg/ha) year to date	207	194
Current N application rate kg N/ha	22	0
	1 March	3 March
DM%	13.4	11.6
Pasture ME	11.4	11.7
Pasture NDF	47.3	51.8
Pasture CP	27.2	29.0
Target Intake (kg DM/cow/d)	18	18
Supplement (kg/cow/day)	0	2.5
Soil temperature (°C)	17.7	15
Growth Rate (kg DM/day)	28	21
Rainfall	4	90
Conditions for farmwalk	Raining and cold	Beautiful and fine
Notes:		Big thanks to everyone who turned up to Stu and Deb's, and Jeremy and Anna's monitor farms. Great to get that support.

NB: pasture quality data are for 1 sample collected from each farm.

## Weekly Pasture Growth Rates



## Weekly Soil Temperature



## Mawheraiti



## Kowhitirangi

