

Westland Monitor Farm Project

Weekly Update as at week ending Wednesday 18 November 2020

CO Comment

Farmers are noticing seed head emergence. Maintaining consistent residuals (1500-1600) will ensure that the cows eat the seed head at immature stage, but beware that once seed head has emerged, pasture quality and palatability will decline. If pastures are allowed to become stalky, feed quality will decrease and the herd's milk production will fall, even though there appears to be plenty of pasture. A rapid fall from peak production is usually a good indication that there has been poor pasture control.

There are a number of options available for managing surplus pasture, such as...

Speeding up the rotation

Make grass silage

Take out paddocks for a summer crop

For more on managing a surplus visit

<https://www.dairynz.co.nz/publications/farmfacts/farm-management/farmfact-1-38/>

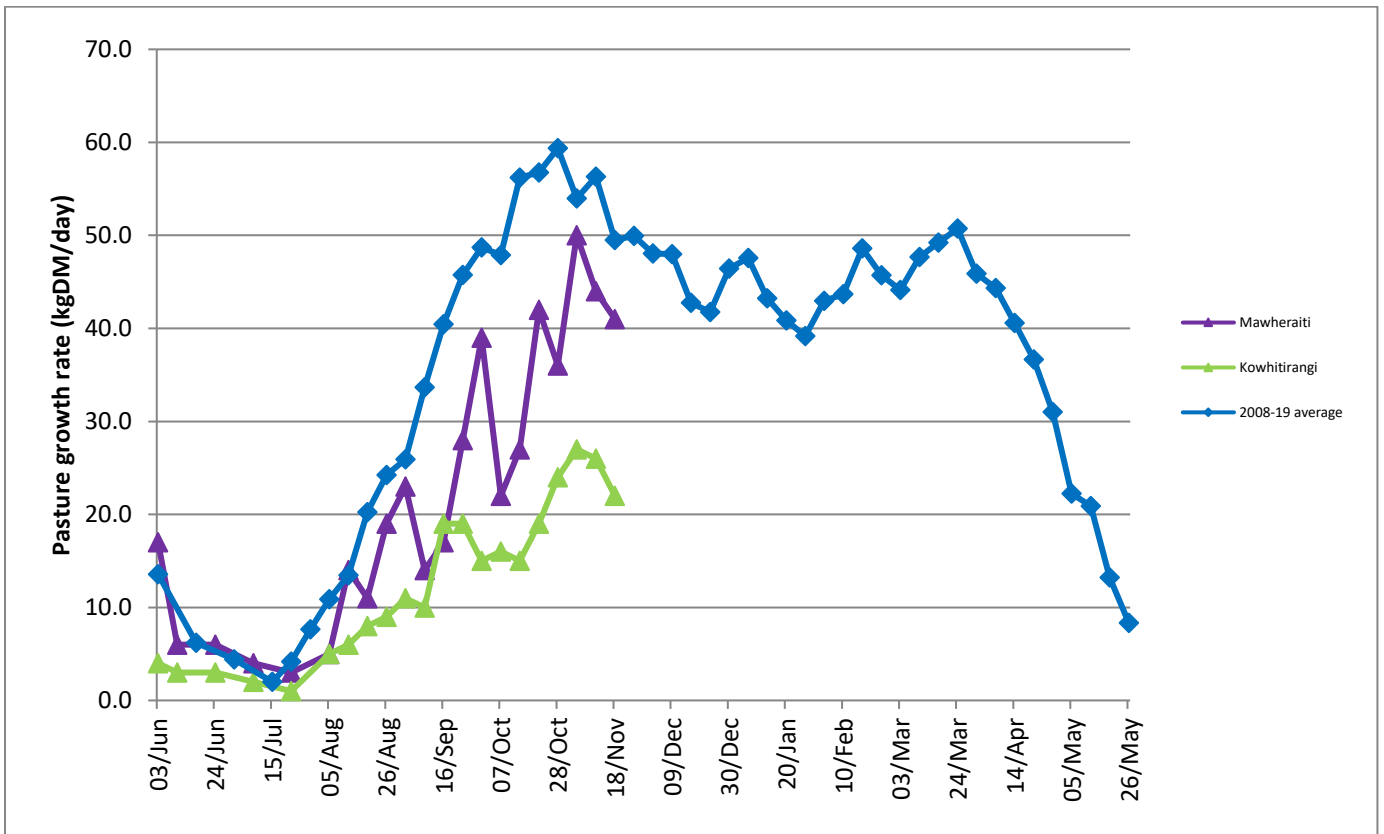
With so much going on at this time of year it can be easy to overlook the replacement heifer calves. Achieving target liveweights at weaning is critical if performance targets are to be met down the track. Basing decisions on a measured liveweight is going to be far more effective than weaning decisions based on age or guesswork. Once weaned onto pasture, keep providing access to meal or other protein rich feedstuffs, at up to 2kg/head/day, gradually reducing this over the next few months. Check the liveweight progress by regular weighing's and if there are animals not putting on weight they should be pulled out for preferential feeding.

Farm Summary

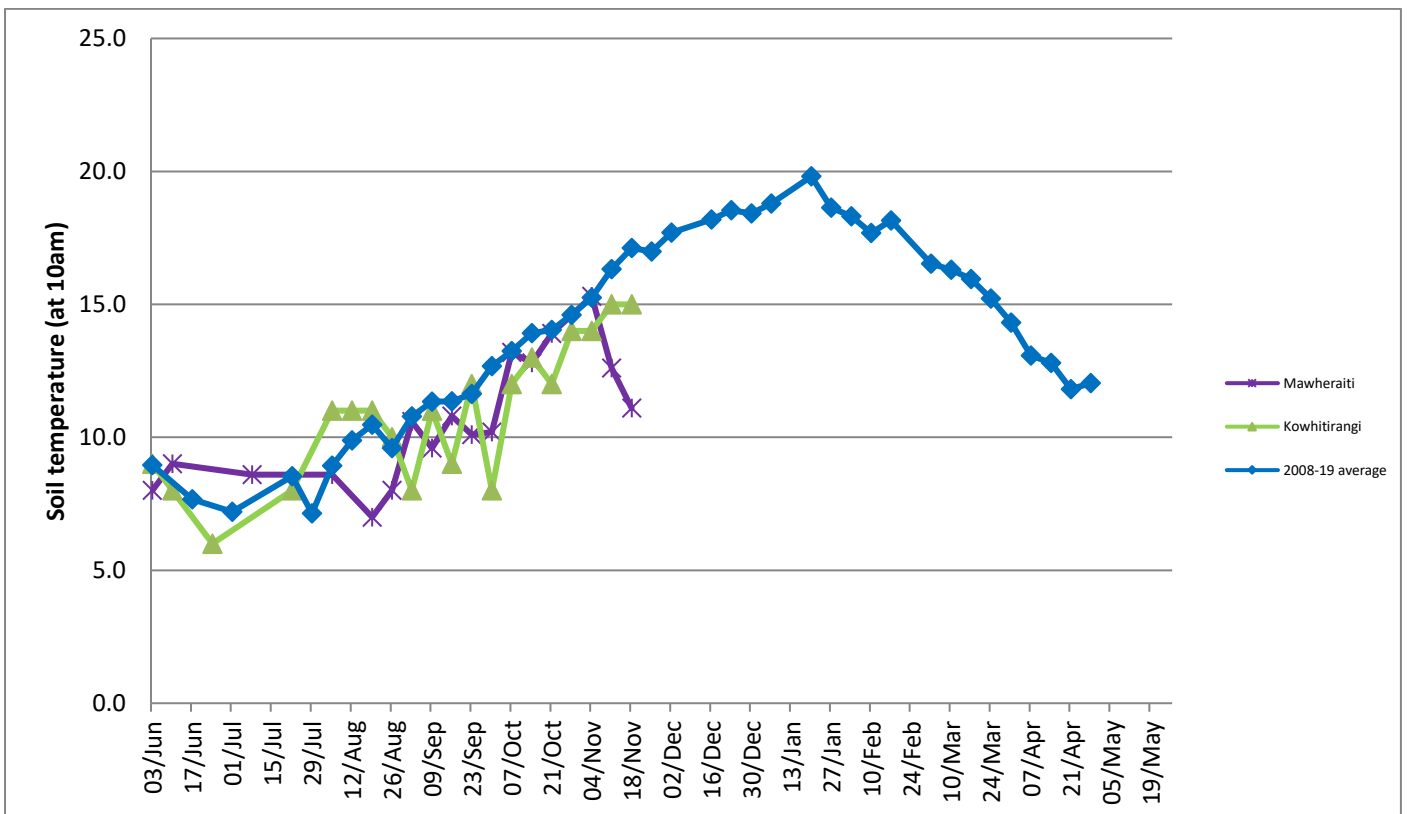
	Mawheraiti	Kowhitirangi
Average cover (kg DM/ha)	2182	2094
APC (11 November)	2276	2102
Rotation length (days)	23	24
Stocking rate	2.3	2.3
Percentage in milk	100%	100%
Milksolids kg/cow	1.96	1.90
Milksolids kg/ha	4.6	4.3
MS/cow (season to date)	151	150
MS/ha (season to date)	381	3335
N (kg/ha) year to date	100	90
Current N application rate kg N/ha	22	20
	2 Nov	4 Nov
DM%	13.6	10.9
Pasture ME	11.4	11.4
Pasture NDF	51.1	54.0
Pasture CP	24.6	27.6
Target Intake (kg DM/cow/d)	18	18
Supplement (kg/cow/day)	1.5	2.5
Soil temperature (°C)	11.1	15
Growth Rate (kg DM/day)	41	22
Rainfall	1.5	63
Conditions for farmwalk	Fine	Fine, but farm very wet from day before. Lots of rain in last 12 months

NB: pasture quality data are for 1 sample collected from each farm

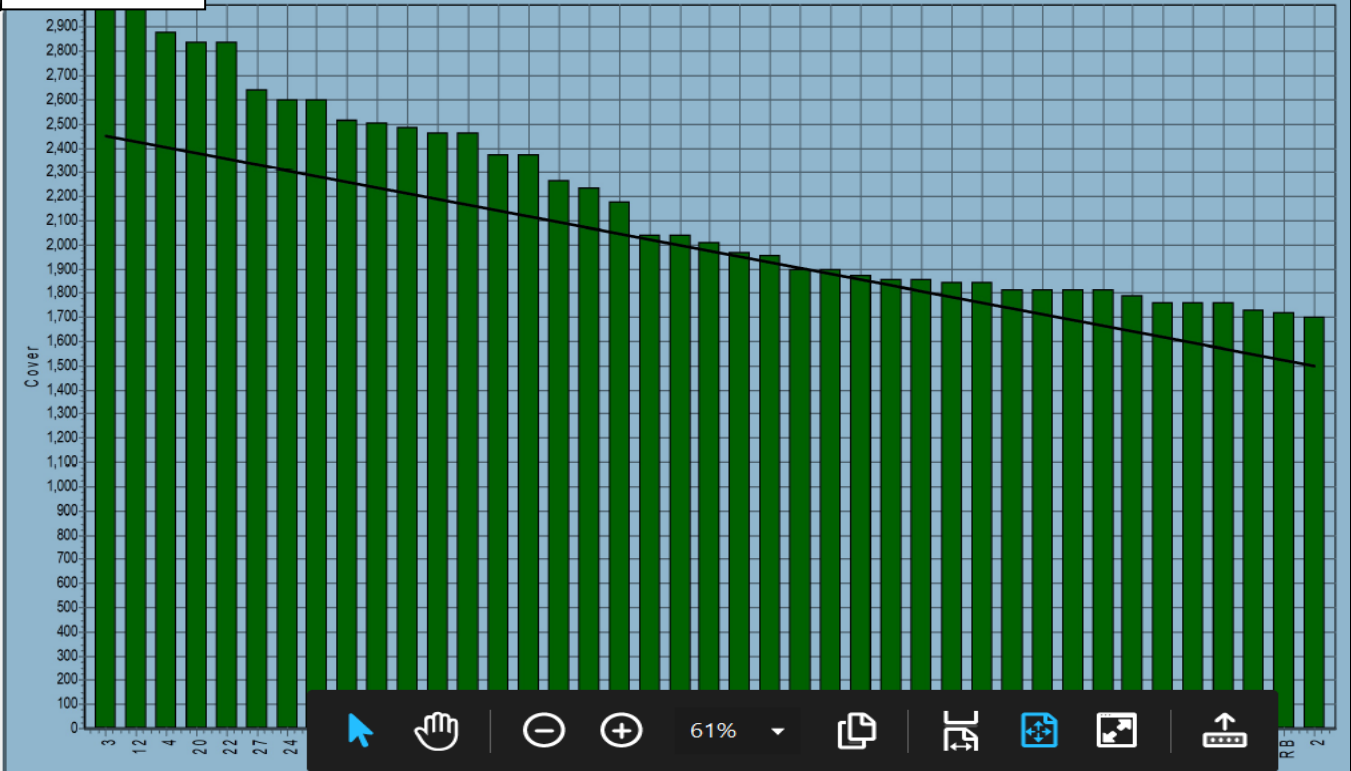
Weekly Pasture Growth Rates



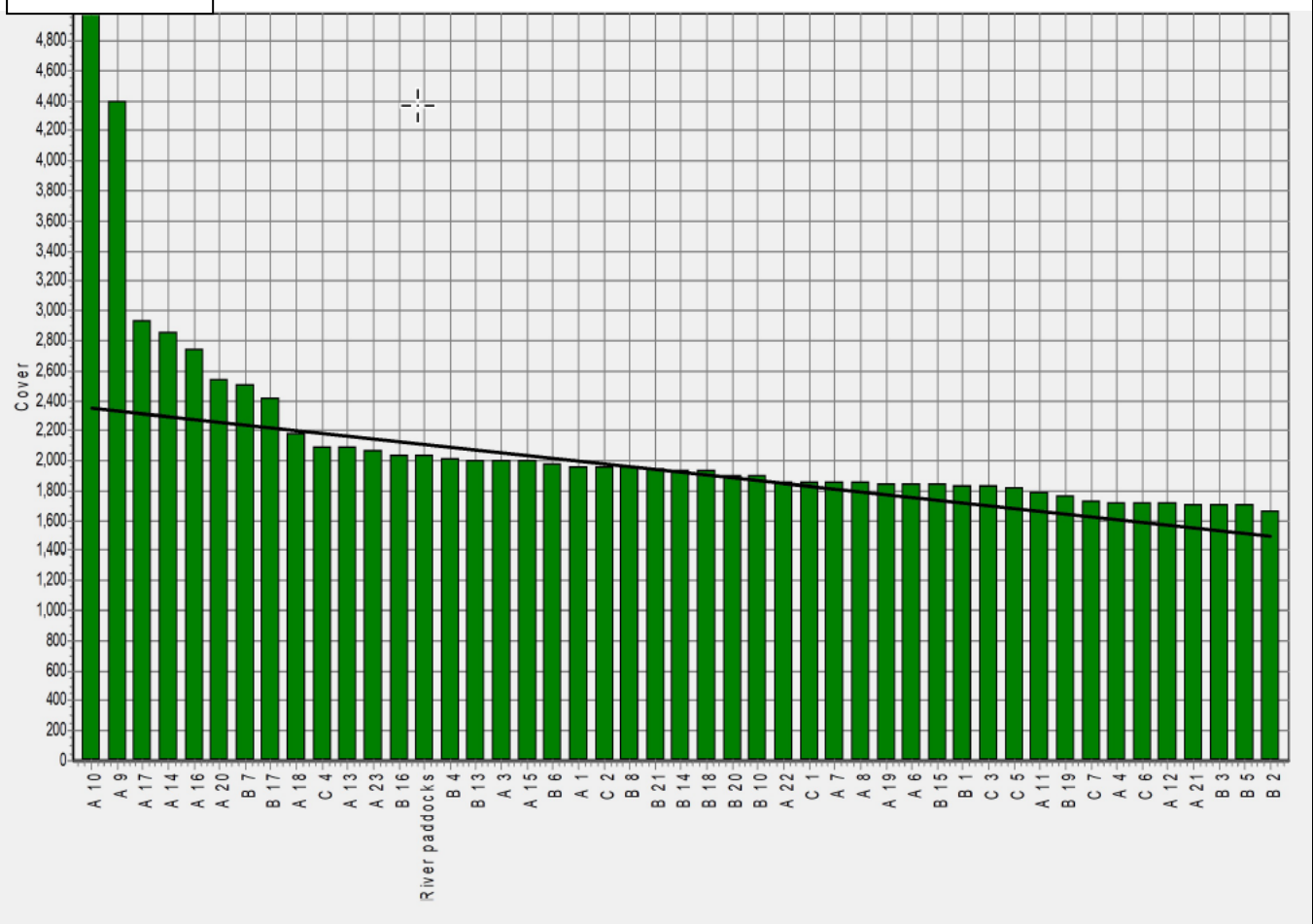
Weekly Soil Temperature



Mawheraiti



Kowhitirangi



Kowhitirangi

Description	Date	RPM	% DM	% Prot	% Lipid	% ADF	% NDF	Sol Sugar	OMD %	MJME /kg
Paddock 13b	15/1/20	10.0	19.5	18.8	3.4	24.1	44.7	13.8	76.8	11.2
Paddock 4a	5/2/20	13.8	9.9	24.8	3.3	30.5*	53.1	2.1	76.0	11.1
Paddock 14a	4/3/20	16.0	11.6	29.5	3.3	22.9	45.0	6.4	81.7	11.9
Paddock 17b	10/6/20	10.8	13.6	28.3	3.8	17.4	33.6	14.0	88.3	12.9
Paddock 13b	7/7/20	8.0	11.8	29.4	4.1	21.7	44.6	10.0	84.6	12.3
Paddock 3c	5/8/20	10.2	11.7	30.9	4.3	23.5	45.9	7.1	81.3	11.9
Paddock 4a	2/9/20	11.8	17.3	25.8	4.2	21.5	42.3	12.0	>85	>12.7
Paddock 1	14/10/20	9.7	12.9	31.7	4.0	23.9	49.0	6.8	83.2	12.1
Paddock 19b	4/11/20	11.8	10.9	27.6	3.6	27.4	54.0	3.9	78.3	11.4

* Test analytes which have occurred as outliers on the NIRS calibration are indicated by * and should be treated as an approximation only.