

Westland Monitor Farm Project

Weekly Update as at week ending Wednesday 19 May 2021

CO Comment

Winter is upon us. Most people will be beginning to transition the herd into the winter grazing system. If you haven't already, then there is still time to cement the plan for winter. The farming sector has developed two resources to assist you with wintering this year. The first is a quick checklist you can use to spot any improvements you can make before winter arrives. The second is a Winter Grazing Plan which demonstrates to the Government that there is a commitment amongst farmers to continue lifting wintering standards.

By using this guide, you're taking the right steps to continue lifting on-farm winter grazing standards. We need to document our practices to aid transparency and prove we are doing what we say we are doing. Not everything goes to as proposed, so having a contingency plan is also crucial too. This applies if you are wintering on crop or on grass and silage.

An effective wintering system

- supports good animal health and welfare
- minimises soil and nutrient loss to the environment
- complies with regional council regulations
- protects valuable topsoil
- complements the overall dairy farm system and the work of the team on farm
- has a contingency plan for periods of adverse weather

To download the 2021 winter grazing checklist and winter grazing plan visit

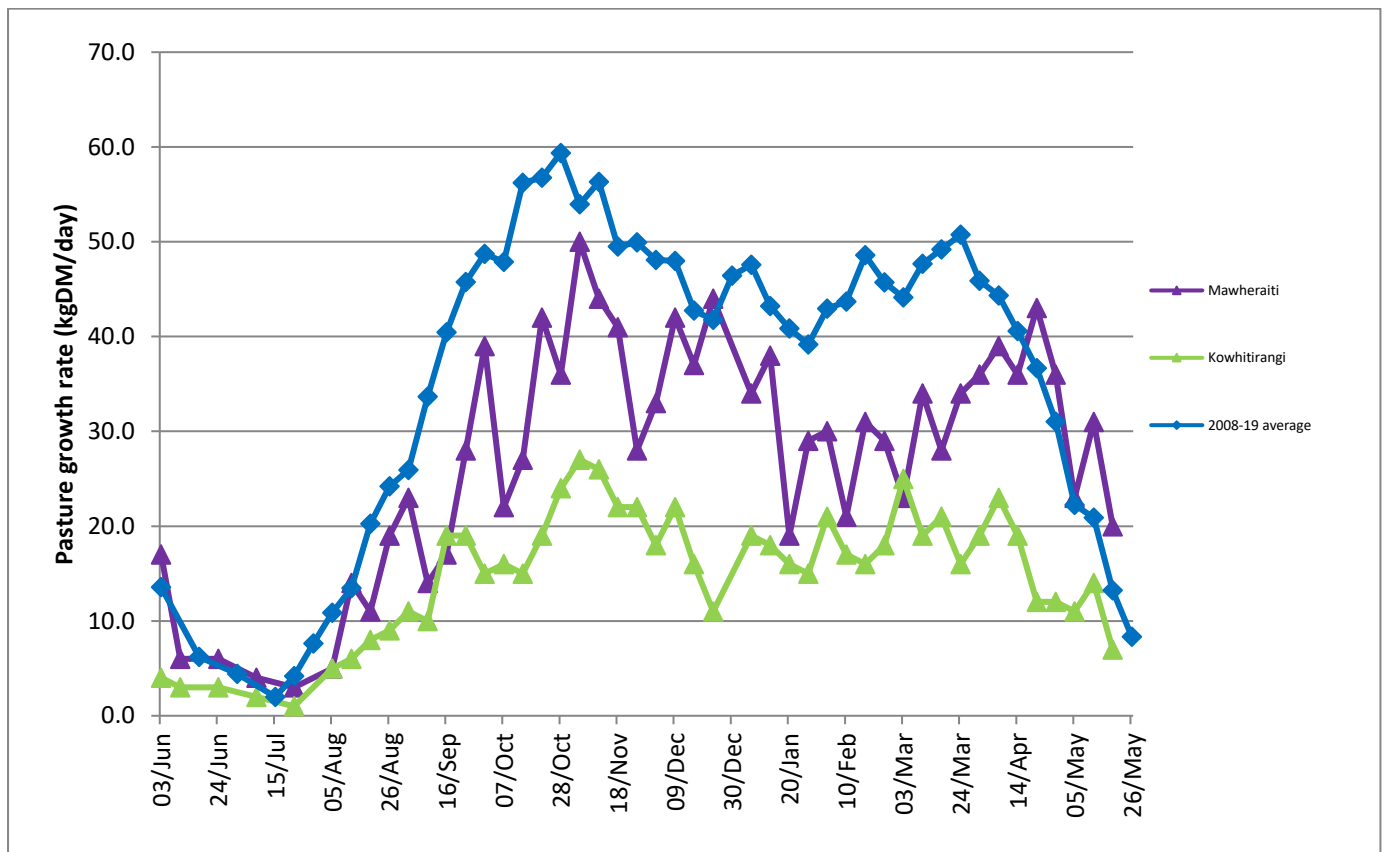
<https://www.dairynz.co.nz/feed/crops/wintering/>

Farm Summary

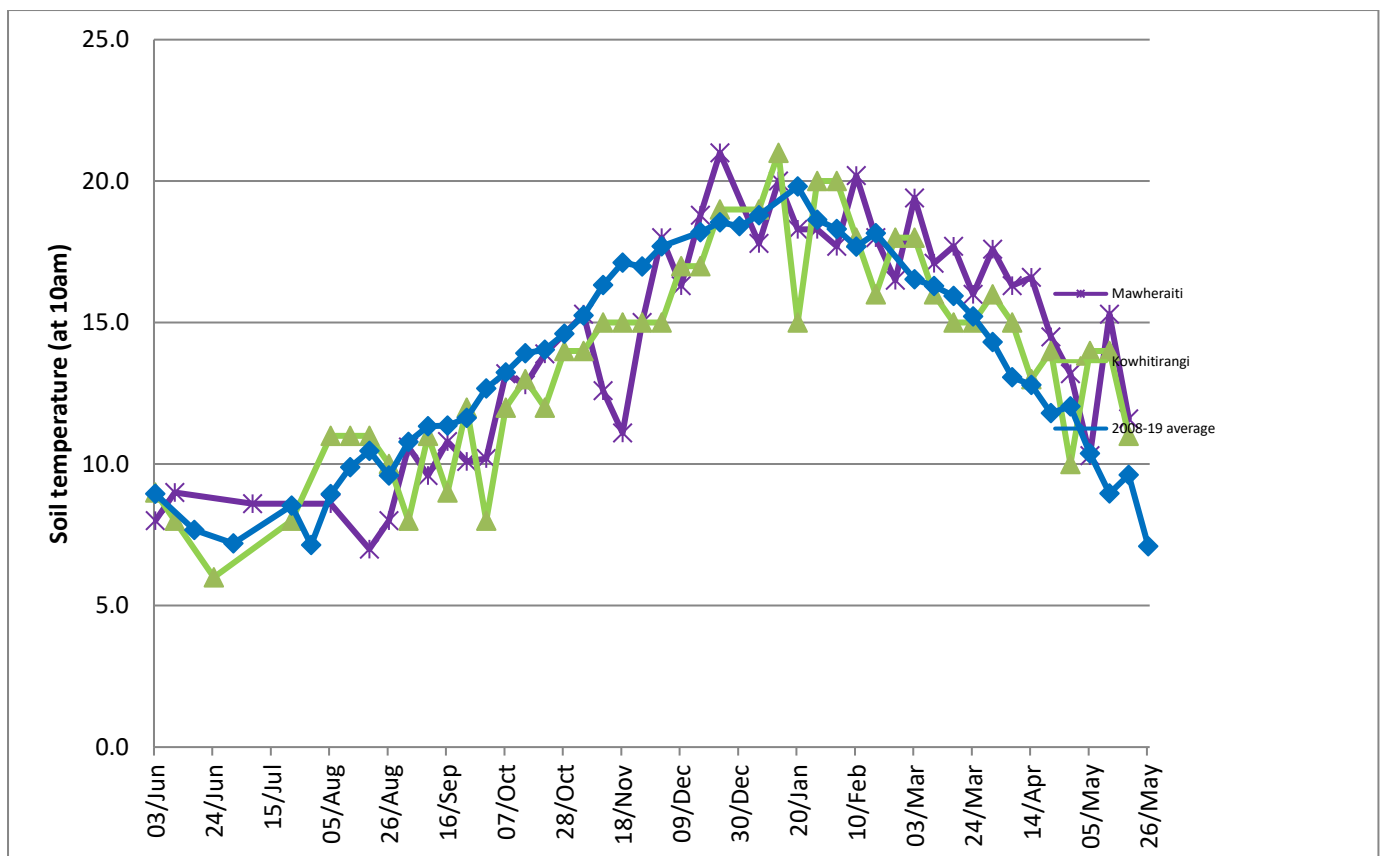
	Mawheraiti	Kowhitirangi
Average cover (kg DM/ha)	2043	1857
APC (12 May)	2127	1885
Rotation length (days)	30	30
Stocking rate	2.3	2.2
Percentage in milk	100%	100%
Milksolids kg/cow	1.29	0.98
Milksolids kg/ha	2.7	2.1
MS/cow (season to date)	456	428
MS/ha (season to date)	1079	922
N (kg/ha) year to date	252	212
Current N application rate kg N/ha		
	3 May	12 April
DM%	9.6	9.8
Pasture ME	12.5	11.8
Pasture NDF	44.1	46.5
Pasture CP	27.1	26.0
Target Intake (kg DM/cow/d)	18	18
Supplement (kg/cow/day)	4.3	7.4
Soil temperature (°C)	11.6	11
Growth Rate (kg DM/day)	20	7
Rainfall	80	80
Conditions for farmwalk	Farm wet but cows looking good	Raining and cold, farm very wet
Notes:		

NB: pasture quality data are for 1 sample collected from each farm.

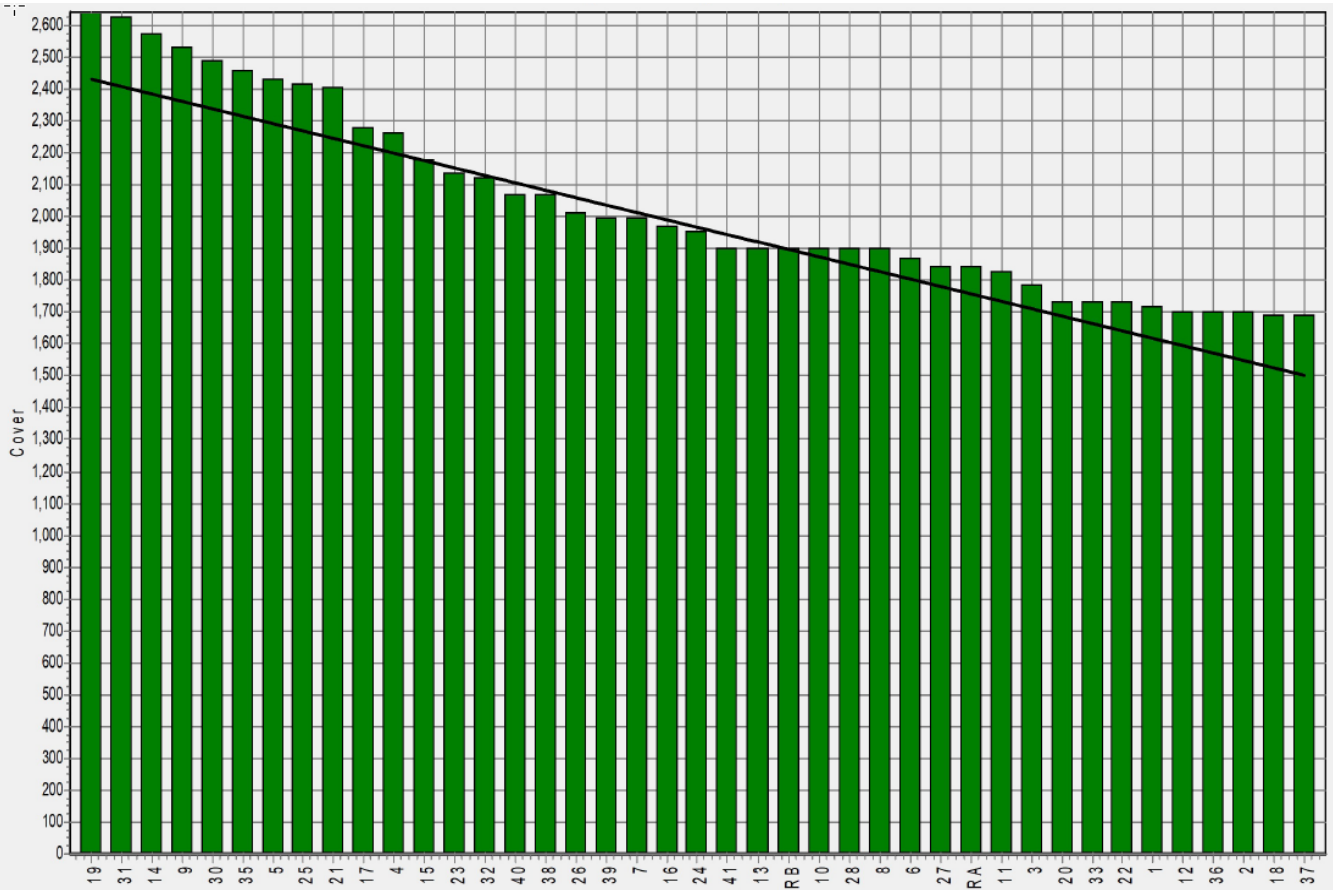
Weekly Pasture Growth Rates



Weekly Soil Temperature



Mawheraiti



Kowhitirangi

