

Westland Monitor Farm Project

Weekly Update as at week ending Wednesday 19 August 2020

CO Comment

Pasture growth rates are starting to increase but be careful not to speed up the rotation too quickly. Aim to be on your shortest spring rotation at balance date (when daily demand/ha equals daily growth/ha). If your rotation gets too quick and the pasture plants are grazed before the third leaf emerges, this can result in the average pasture cover (APC) dropping below 1900 kgDM/ha.

Consequently, subsequent pasture growth rates will be reduced. Grazing a paddock down to lower residuals is acceptable on a longer rotation as the paddock has time to get to third leaf stage before grazing. Lower residuals are also acceptable if the pasture has not been damaged (pugged) during the grazing.

It is the frequency of grazing that has the biggest effect on pasture growth, not the intensity of grazing.

Covid-19 on dairy farms

From 11:59 am on Wednesday 19 August, all businesses must display a NZ COVID Tracer QR code for their business in a prominent place or near the main entrance (you may need to get it laminated or insert in a plastic sleeve, or find a weather-proof location). People coming onto your property (including contractors, vets etc.) will need to scan the QR code using the Ministry of Health's NZ COVID Tracer app.

Click [here to create your official poster](#). You will need your driver licence details and your New Zealand Business Number (you can find your number [here](#)).

Visit the Government's page [Unite against COVID-19](#) for the latest official information.

Read MPI's FAQs on Alert Level 2 and 3 about [COVID-19 and primary industries](#).

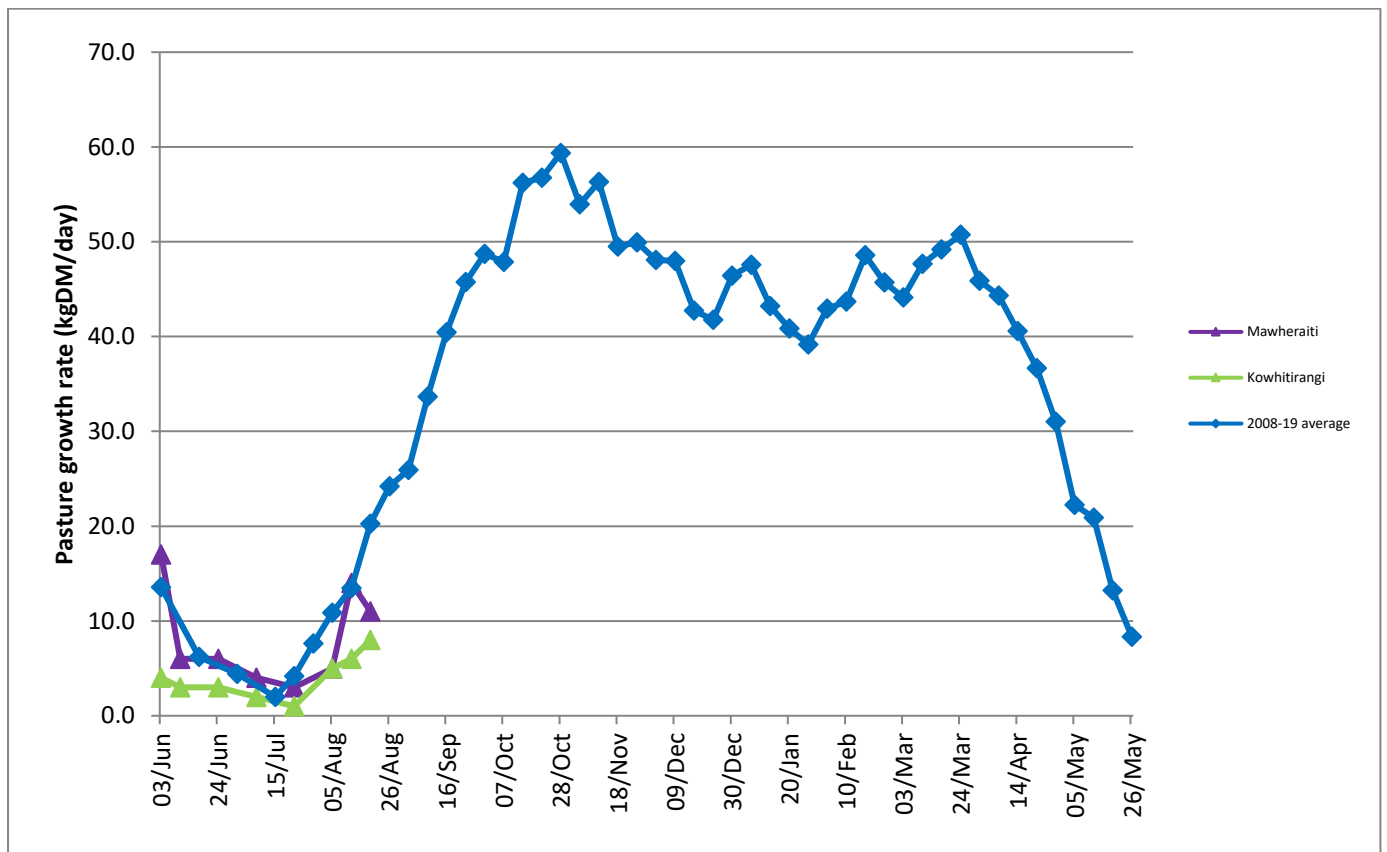
Stay safe.

Farm Summary

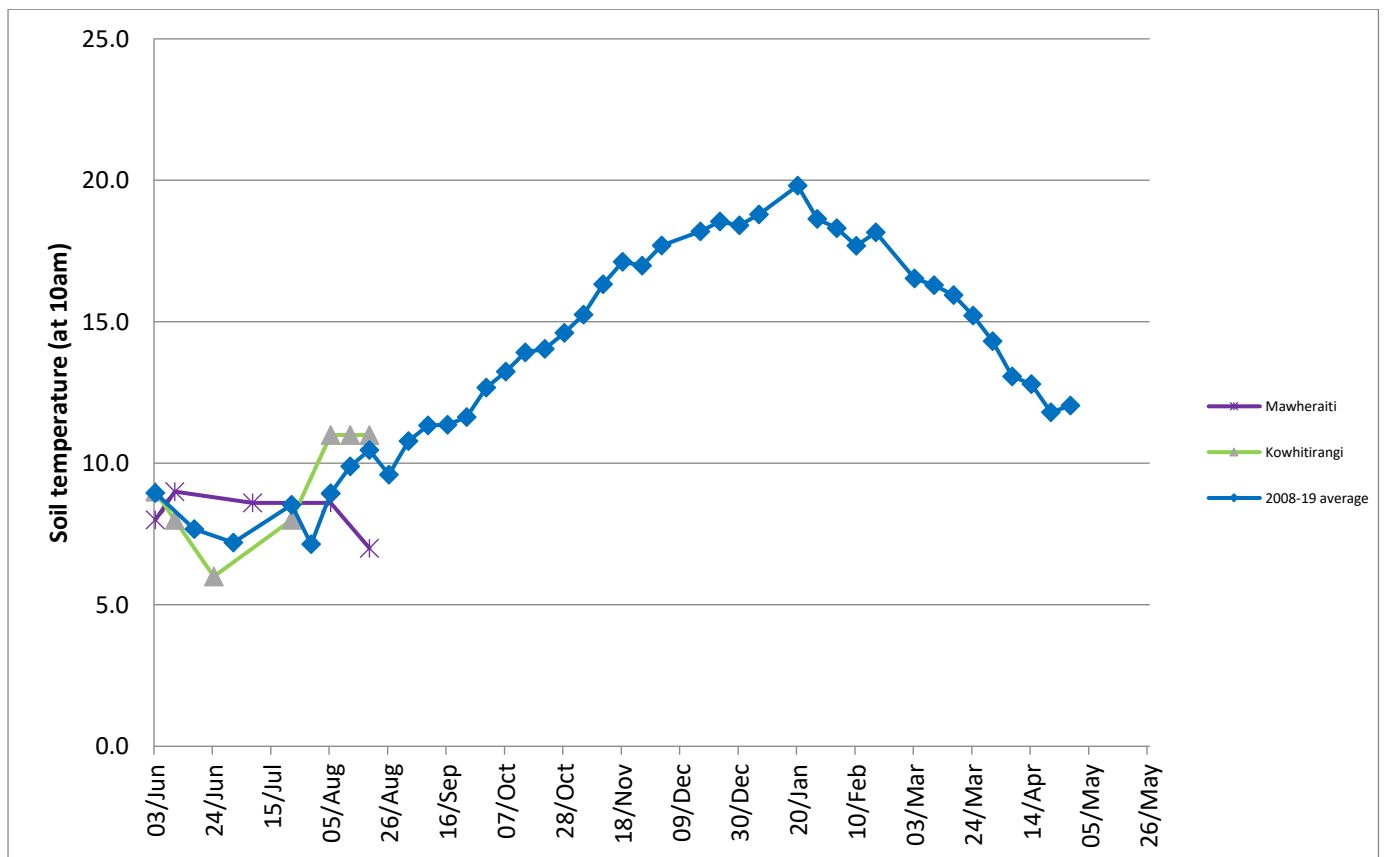
	Mawheraiti	Kowhitirangi
Average cover (kg DM/ha)	2277	1926
APC (5 August)	2245	1922
Rotation length (days)	101	90
Stocking rate		
Percentage in milk		
Milksolids kg/cow	1.36	0.99
Milksolids kg/ha	0.8	0.4
MS/cow (season to date)	2	1
MS/ha (season to date)	6	3
N (kg/ha) year to date	35	22
Current N application rate kg N/ha	-	22
	3 Aug	5 Aug
DM%	12.4	11.7
Pasture ME	12.0	11.9
Pasture NDF	43.4	45.9
Pasture CP	31.7	30.9
Target Intake (kg DM/cow/d)	17	17
Supplement (kg/cow/day)	4	4
Soil temperature (°C)	7	11
Growth Rate (kg DM/day)	11	8
Rainfall	1.5	-
Conditions for farmwalk	Warm fine day	Heavy rain and wind

NB: pasture quality data are for 1 sample collected from each farm

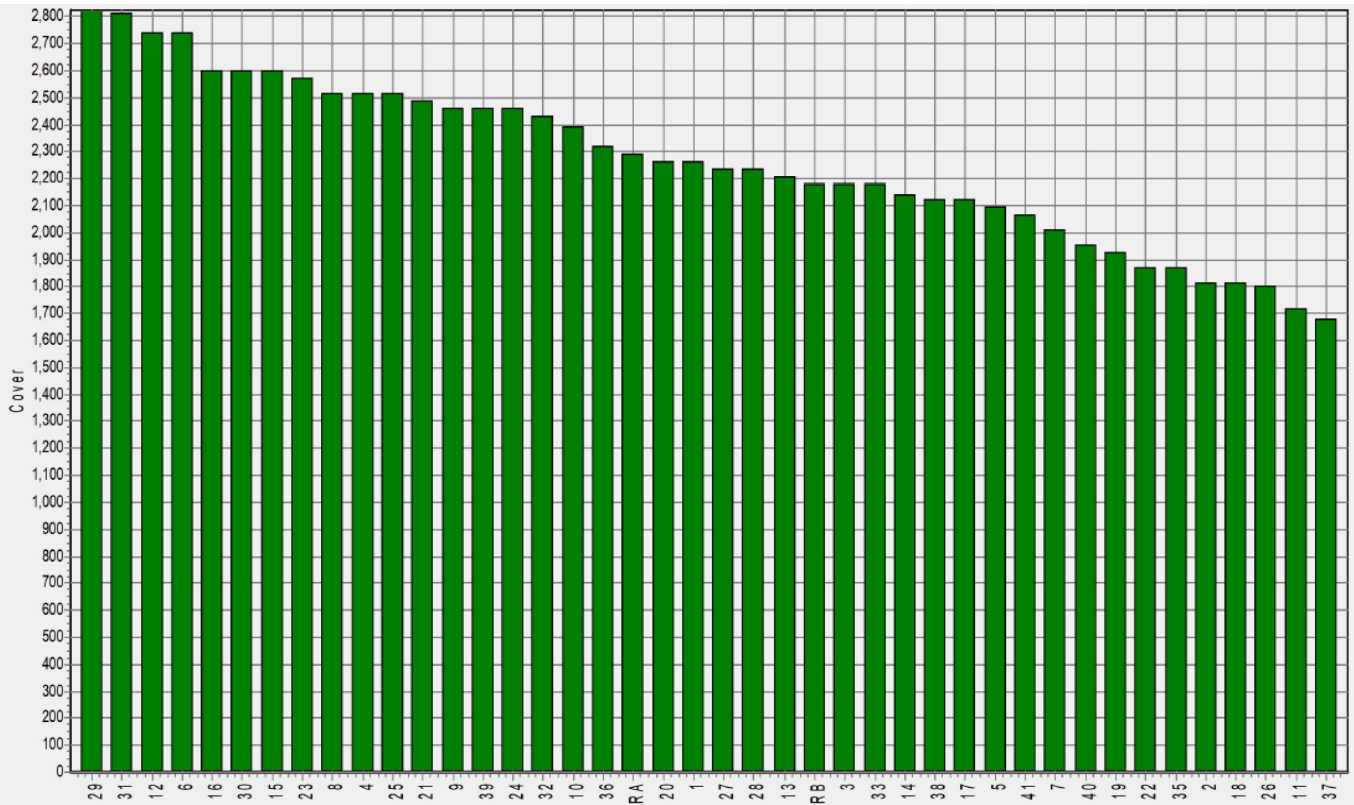
Weekly Pasture Growth Rates



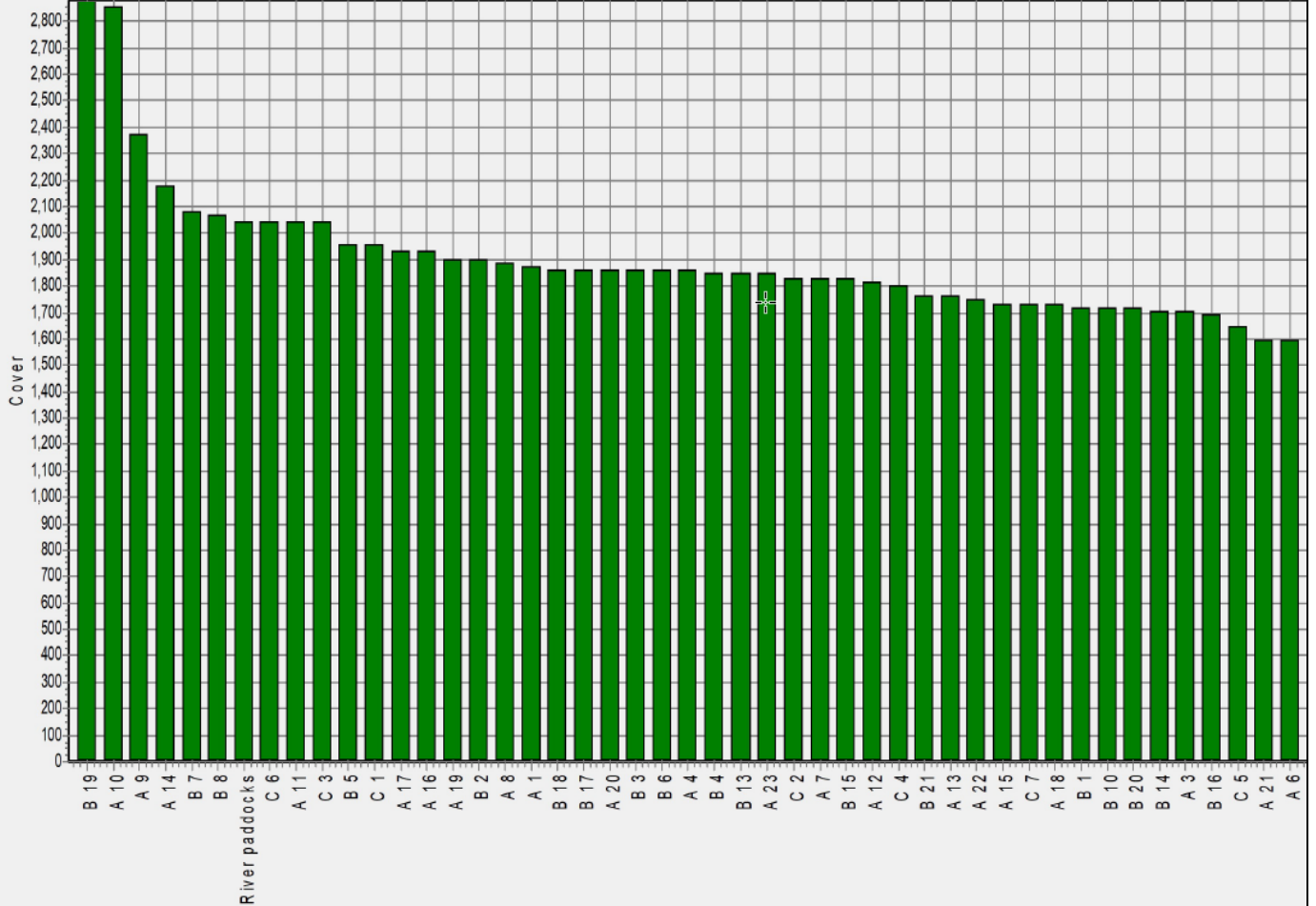
Weekly Soil Temperature



Mawheraiti



Kowhitirangi



Kowhitirangi

Description	Date	RPM	% DM	% Prot	% Lipid	% ADF	% NDF	Sol Sugar	OMD %	MJME /kg
Paddock 5b	17/07/19	13.8	14.3	24.3	3.9	18.4	43.1	14.2	85.2	12.4
Paddock 3c	4/09/19	10.8	17.3	24.0	3.5	15.7	36.1	21.1	>85	12.6
Paddock 9b	9/10/19	8.9	15.0	25.6	3.3	22.3	45.2	10.5	83.3	12.2
Paddock 15a	6/11/19	9.0	13.5	23.7	3.8	20.4	43.8	12.2	>85	12.5
Paddock 13a	4/12/19	13.3	11.5	29.4	3.2	24.5	43.3	6.4	85.0	12.4
Paddock 13b	15/1/20	10.0	19.5	18.8	3.4	24.1	44.7	13.8	76.8	11.2
Paddock 4a	5/2/20	13.8	9.9	24.8	3.3	30.5*	53.1	2.1	76.0	11.1
Paddock 14a	4/3/20	16.0	11.6	29.5	3.3	22.9	45.0	6.4	81.7	11.9
Paddock 17b	10/6/20	10.8	13.6	28.3	3.8	17.4	33.6	14.0	88.3	12.9
Paddock 13b	7/7/20	8.0	11.8	29.4	4.1	21.7	44.6	10.0	84.6	12.3
Paddock 3c	5/8/20	10.2	11.7	30.9	4.3	23.5	45.9	7.1	81.3	11.9

* Test analytes which have occurred as outliers on the NIRS calibration are indicated by * and should be treated as an approximation only.