

Westland Monitor Farm Project

Weekly Update as at week ending Wednesday 20 January 2021

CO Comment

I hope that everyone had a good Christmas and New Year. Last week saw some unsettled weather on the West Coast with persistent thunderstorms and blustery winds. This rain should be enough to get the areas that were beginning to experience the consequences of decreased soil moisture levels a much needed boost.

Mating will be done for most by now, and it is timely to start thinking about booking in aged pregnancy testing. Talk to your vet regarding this. It may also pay to be mindful of securing space at works for known cull animals as the world is still experiencing the effects of Covid-19 which may have a flow on effect to our meat processors. There is no harm in being proactive with this.

We have some great events coming up over the next few weeks. DairyNZ is supporting Beef & Lamb NZ with a field day at Ikamatua on the 16th of February about Facial Eczema. West Coast Vets will be there to give out some tips and tricks for identifying and managing this potentially devastating disease. Register at <https://beeflambnz.com/events/blnz-facial-eczema-workshop-ikamatua>

SMASH is being held in Karamea on the 10th of February with topics including effluent, supplementary feeding, and variable milking frequencies. Paul Edwards a Scientist at DairyNZ will outline some of the practicalities of OAD and alternative variable milking options. He will also talk about the latest research on 3in2 milking at different stages of lactation and the effect of different 3in2 milking times at peak lactation. This information will help you to identify the options that will best suit your business and make the switch successfully.

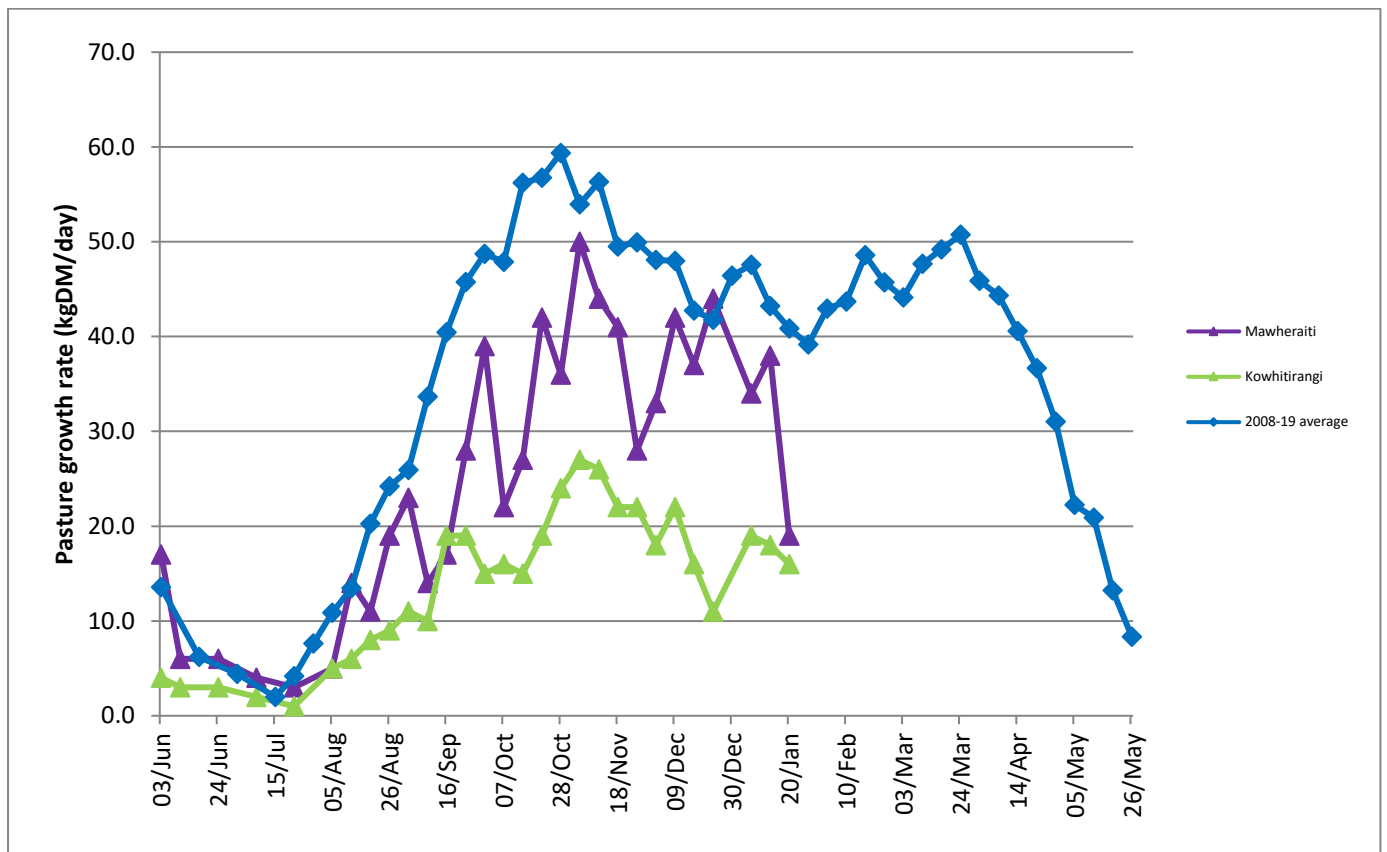
Book your tickets at <https://www.smallerherds.co.nz/smash-events/weighing-up-your-options-karamea-february-10th/>

Farm Summary

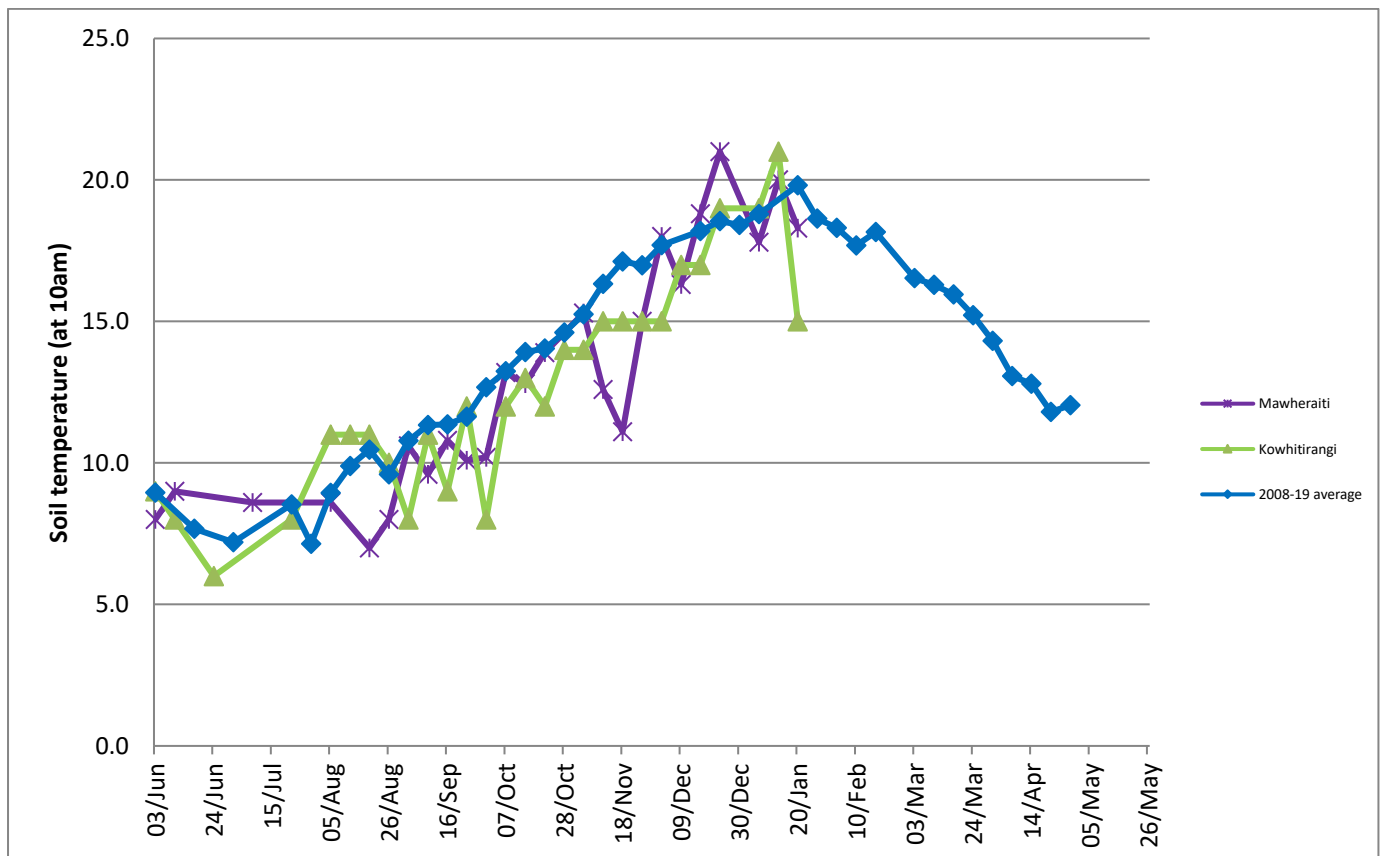
	Mawheraiti	Kowhitirangi
Average cover (kg DM/ha)	1999	1973
APC (13 January)	2111	1968
Rotation length (days)	23	26
Stocking rate	2.3	2.5
Percentage in milk	100%	100%
Milksolids kg/cow	1.67	1.65
Milksolids kg/ha	3.9	3.5
MS/cow (season to date)	277	262
MS/ha (season to date)	650	564
N (kg/ha) year to date	157	176
Current N application rate kg N/ha	22	23
	11 Jan	13 Jan
DM%	17.0	16.0
Pasture ME	11.6	11.2
Pasture NDF	45.9	49.2
Pasture CP	16.6	18.8
Target Intake (kg DM/cow/d)	18	18
Supplement (kg/cow/day)	0	2.4
Soil temperature (°C)	18.3	15
Growth Rate (kg DM/day)	19	16
Rainfall	35	130
Conditions for farmwalk	Rain, cold	Pouring rain, very cold, flooding
Notes:	Farm dry. Been very hot and dry, lime truck busy, Lime going on 1 t/ha	

NB: pasture quality data are for 1 sample collected from each farm.

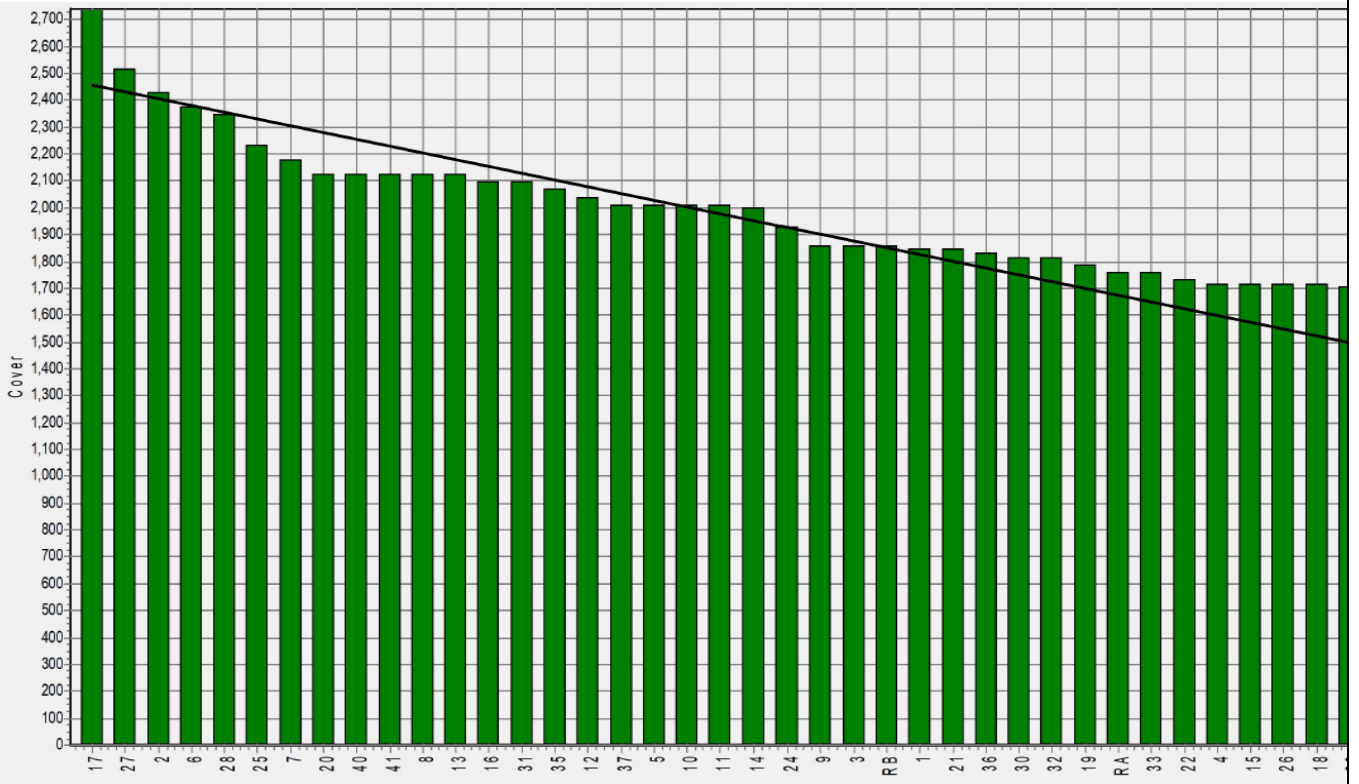
Weekly Pasture Growth Rates



Weekly Soil Temperature



Mawheraiti



Kowhitirangi



Kowhitirangi

Description	Date	RPM	% DM	% Prot	% Lipid	% ADF	% NDF	Sol Sugar	OMD %	MJME /kg
Paddock 17b	10/6/20	10.8	13.6	28.3	3.8	17.4	33.6	14.0	88.3	12.9
Paddock 13b	7/7/20	8.0	11.8	29.4	4.1	21.7	44.6	10.0	84.6	12.3
Paddock 3c	5/8/20	10.2	11.7	30.9	4.3	23.5	45.9	7.1	81.3	11.9
Paddock 4a	2/9/20	11.8	17.3	25.8	4.2	21.5	42.3	12.0	>85	>12.7
Paddock 1	14/10/20	9.7	12.9	31.7	4.0	23.9	49.0	6.8	83.2	12.1
Paddock 19b	4/11/20	11.8	10.9	27.6	3.6	27.4	54.0	3.9	78.3	11.4
Paddock 11a	2/12/20	11.4	15.4	26.7	3.3	24.2	42.0	7.9	82.2	12.0
Paddock 16a	13/1/21	15.7	16.0	18.8	3.3	28.0	49.2	9.9	76.9	11.2

* Test analytes which have occurred as outliers on the NIRS calibration are indicated by * and should be treated as an approximation only.