

Westland Monitor Farm Project

Weekly Update as at week ending Wednesday 21 October 2020

CO Comment

The spring boost is still very much lagging for the entire West Coast. The warm sunny days are dotted few and far between by many a day of cloud or wet and cold showers passing through weekly is holding back the spring flush of grass growth. This is also affecting cow condition and cows cycling with pasture covers lower than typical for this time of year and being low in feed value.

Manage round length so it can build the feed wedge according to growth rates and as things improve over the next week to 10 days, with the hopeful goal of growth meeting demand and being able to minimise supplements fed.

Farmers are still battling the elements trying to get winter crop paddocks worked and regressed and have the pressure on them with time coming soon to take out summer crop paddocks followed by spraying out for next year's winter crop area also.

Mating is kicking off in the next couple of weeks for most farmers so ensure herds are tail painted well and often or if using mating aids that they fixed securely to the animals. Observing cows on heat in the paddock before gathering them up for milking is a good way to recognise cows on heat to be mated. If Once a Day milking, go out in the later afternoon for half an hour and just observe cow activity, recognising the groups bulling. Record all cows in their bulling groups and observe as these cows will be cows on heat, coming on heat and those immediately past mated.

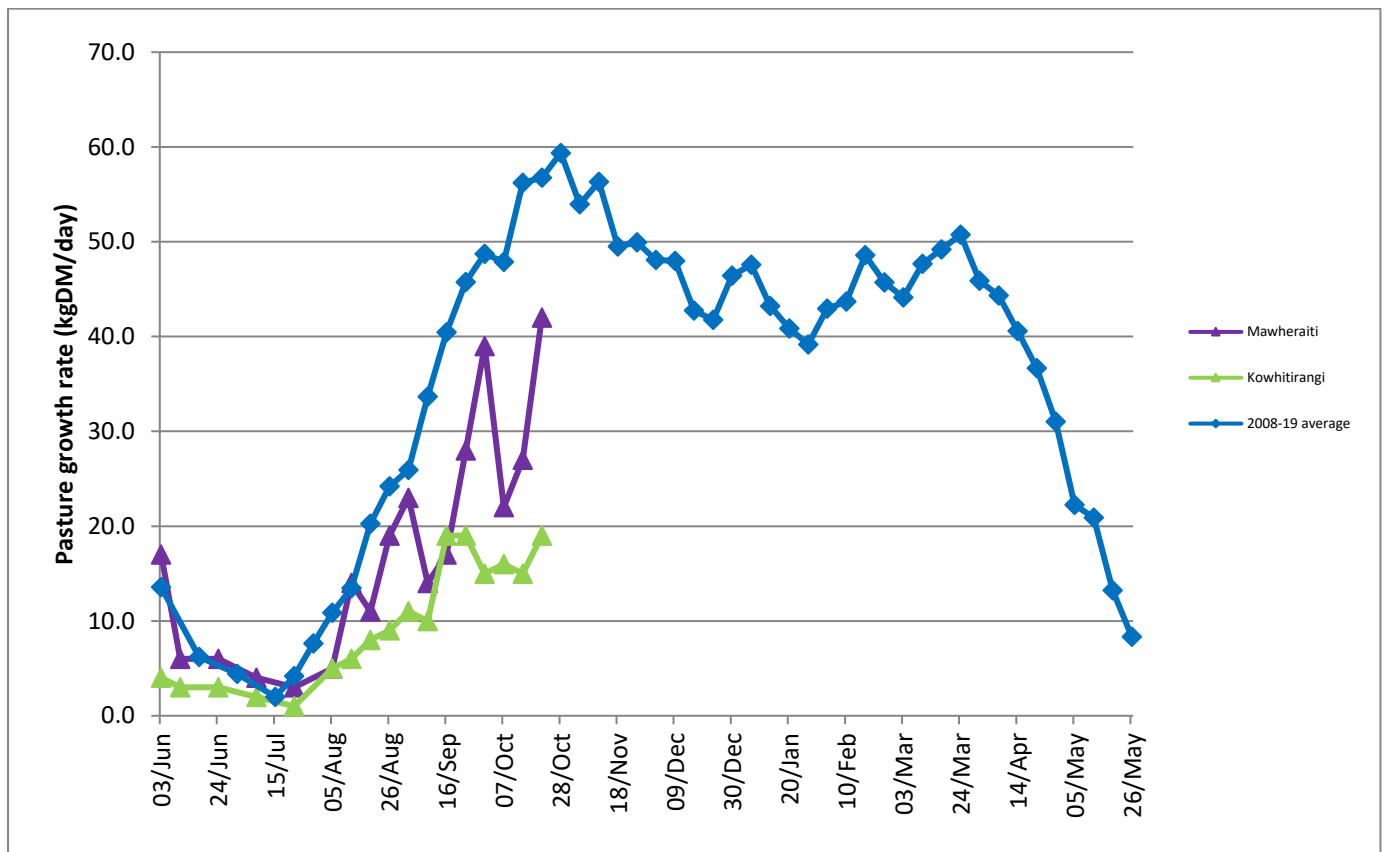
Industry target submission rates to aim for are Week 1 – 30%, Week 2 – 60%, Week 3 – 90%. Along with a target of 78% for the 6 Week Incalf Rate.

Farm Summary

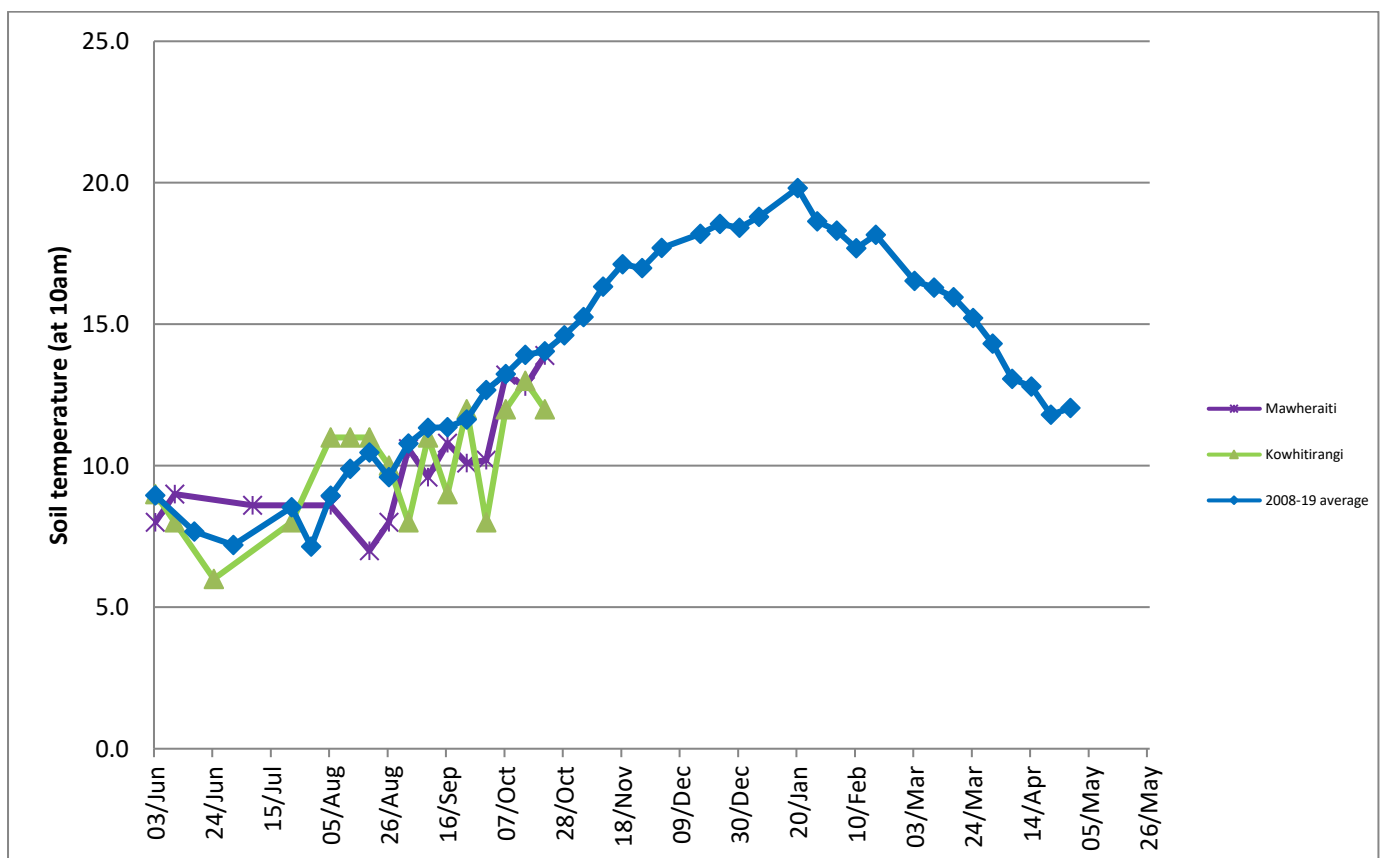
	Mawheraiti	Kowhitirangi
Average cover (kg DM/ha)	2022	1973
APC (14 October)	2032	1948
Rotation length (days)	24	30
Stocking rate	2.3	2.2
Percentage in milk	94%	99%
Milksolids kg/cow	2.18	1.97
Milksolids kg/ha	5.0	4.4
MS/cow (season to date)	96	98
MS/ha (season to date)	244	217
N (kg/ha) year to date	75	70
Current N application rate kg N/ha	22	-
	5 Oct	14 Oct
DM%	14.9	12.9
Pasture ME	11.5	12.1
Pasture NDF	47.0	49.0
Pasture CP	24.7	31.7
Target Intake (kg DM/cow/d)	18	18
Supplement (kg/cow/day)	2.0	4.5
Soil temperature (°C)	13.9	12.0
Growth Rate (kg DM/day)	42	19
Rainfall	25	58
Conditions for farmwalk	Cold, strong wind, driving rain	Fine

NB: pasture quality data are for 1 sample collected from each farm

Weekly Pasture Growth Rates



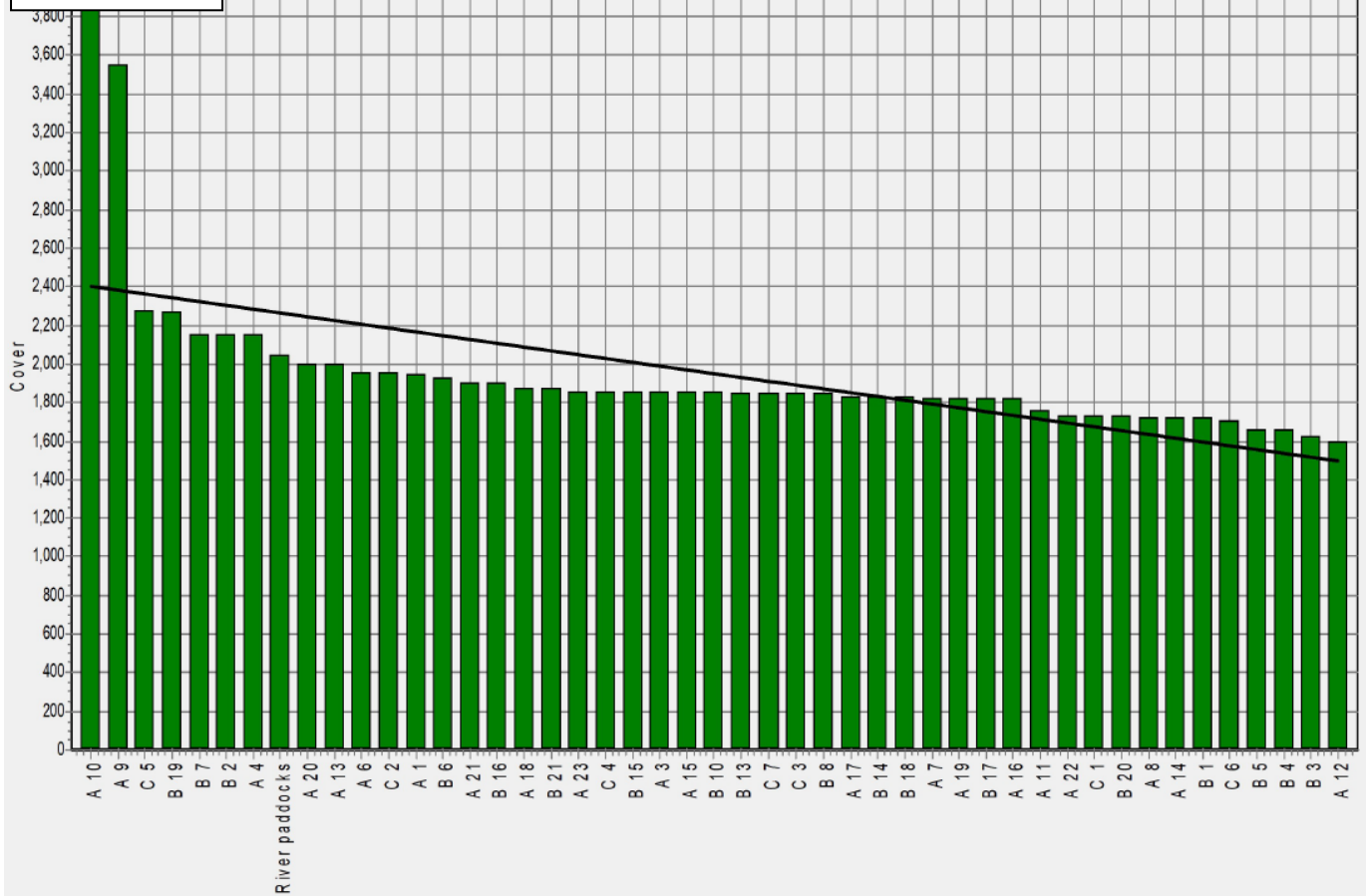
Weekly Soil Temperature



Mawheraiti



Kowhitirangi



Kowhitirangi

Description	Date	RPM	% DM	% Prot	% Lipid	% ADF	% NDF	Sol Sugar	OMD %	MJME /kg
Paddock 13b	15/1/20	10.0	19.5	18.8	3.4	24.1	44.7	13.8	76.8	11.2
Paddock 4a	5/2/20	13.8	9.9	24.8	3.3	30.5*	53.1	2.1	76.0	11.1
Paddock 14a	4/3/20	16.0	11.6	29.5	3.3	22.9	45.0	6.4	81.7	11.9
Paddock 17b	10/6/20	10.8	13.6	28.3	3.8	17.4	33.6	14.0	88.3	12.9
Paddock 13b	7/7/20	8.0	11.8	29.4	4.1	21.7	44.6	10.0	84.6	12.3
Paddock 3c	5/8/20	10.2	11.7	30.9	4.3	23.5	45.9	7.1	81.3	11.9
Paddock 4a	2/9/20	11.8	17.3	25.8	4.2	21.5	42.3	12.0	>85	>12.7
Paddock 1	14/10/20	9.7	12.9	31.7	4.0	23.9	49.0	6.8	83.2	12.1

* Test analytes which have occurred as outliers on the NIRS calibration are indicated by * and should be treated as an approximation only.