

Westland Monitor Farm Project

Weekly Update as at week ending Wednesday 24 February 2021

CO Comment

A bit of welcome rain across the West Coast last week, although most areas are feeling the dry conditions to some degree. This is a result of the predicted La Nina weather patterns. This coupled with what was a wet spring has impacted supplementary feed on hand for many. This may mean there is less in reserve for winter 2021. In 2020 after a very wet season, we were lucky to get a favorable winter which buffered some of what the 19/20 season threw our way. Hopefully, that will happen again this year, but there is no way of knowing therefore we must be prepared for all possible eventualities.

Starting a winter feed budget now will give you the details of any potential shortfalls in feed supply for winter. Be conservative with growth rates and utilization figures as to not under budget.

It is critical to assess how 1st June body condition score and pasture targets will be met to set up well for next season. This involves calculating milking feed requirements, cow condition gain and pasture demand versus supply for the coming months and working out how the gap can be filled. To ease any potential shortage, look to decrease demand from here on in by offloading any non-productive animals or known culls. |

Confirm quantity of feed supply with your supplier if you are bringing in supplements from external sources and if possible, get it on farm at the earliest opportunity so you can have peace of mind that it is ready to go.

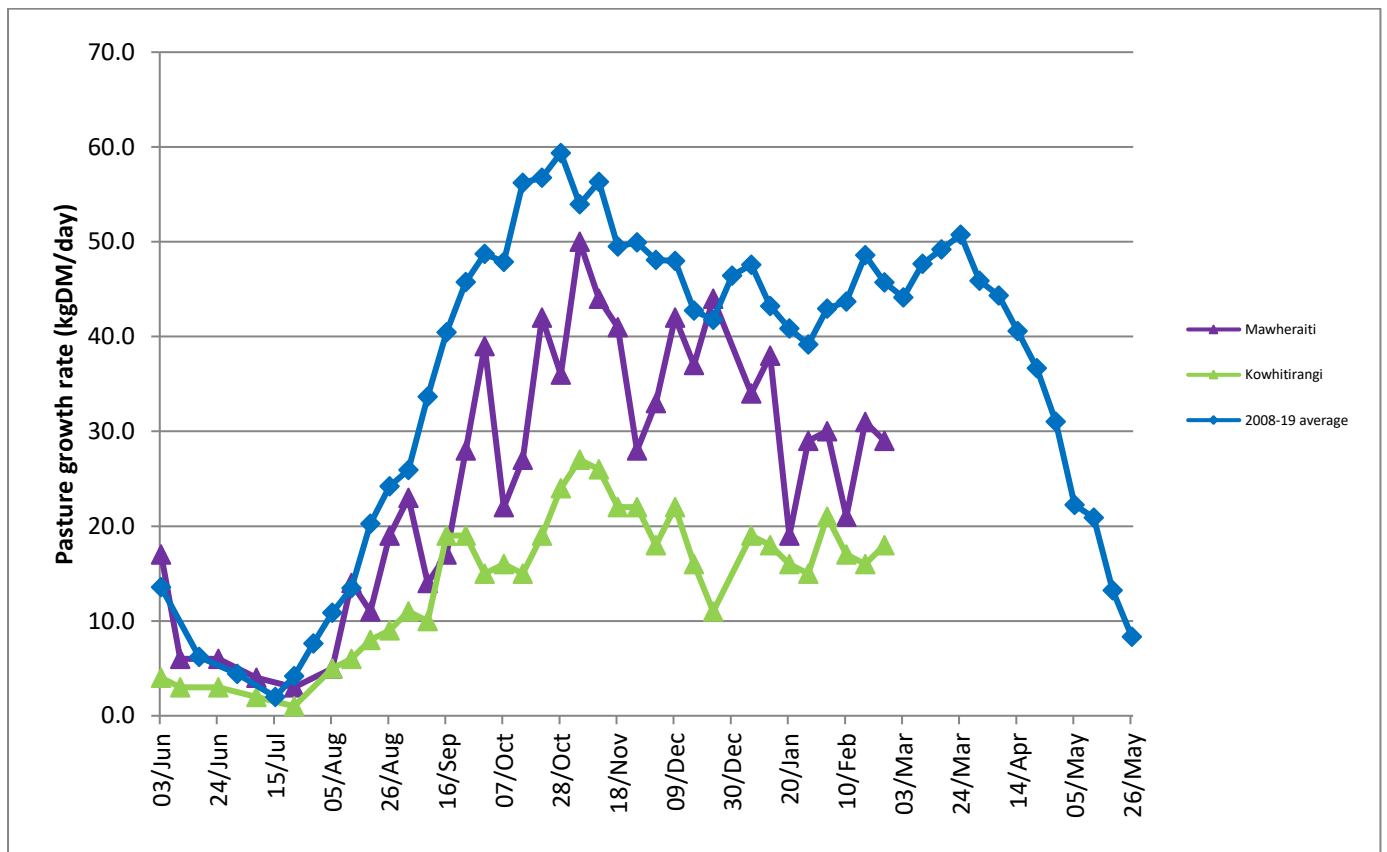
This week DairyNZ is working with Beef and Lamb NZ to bring 2 Wormwise workshops to the West Coast. Internal parasite expert Dave Robertson will be on hand to discuss parasites and drenching. For more information and to register for this event visit <https://www.dairynz.co.nz/events/?region=5454>.

Farm Summary

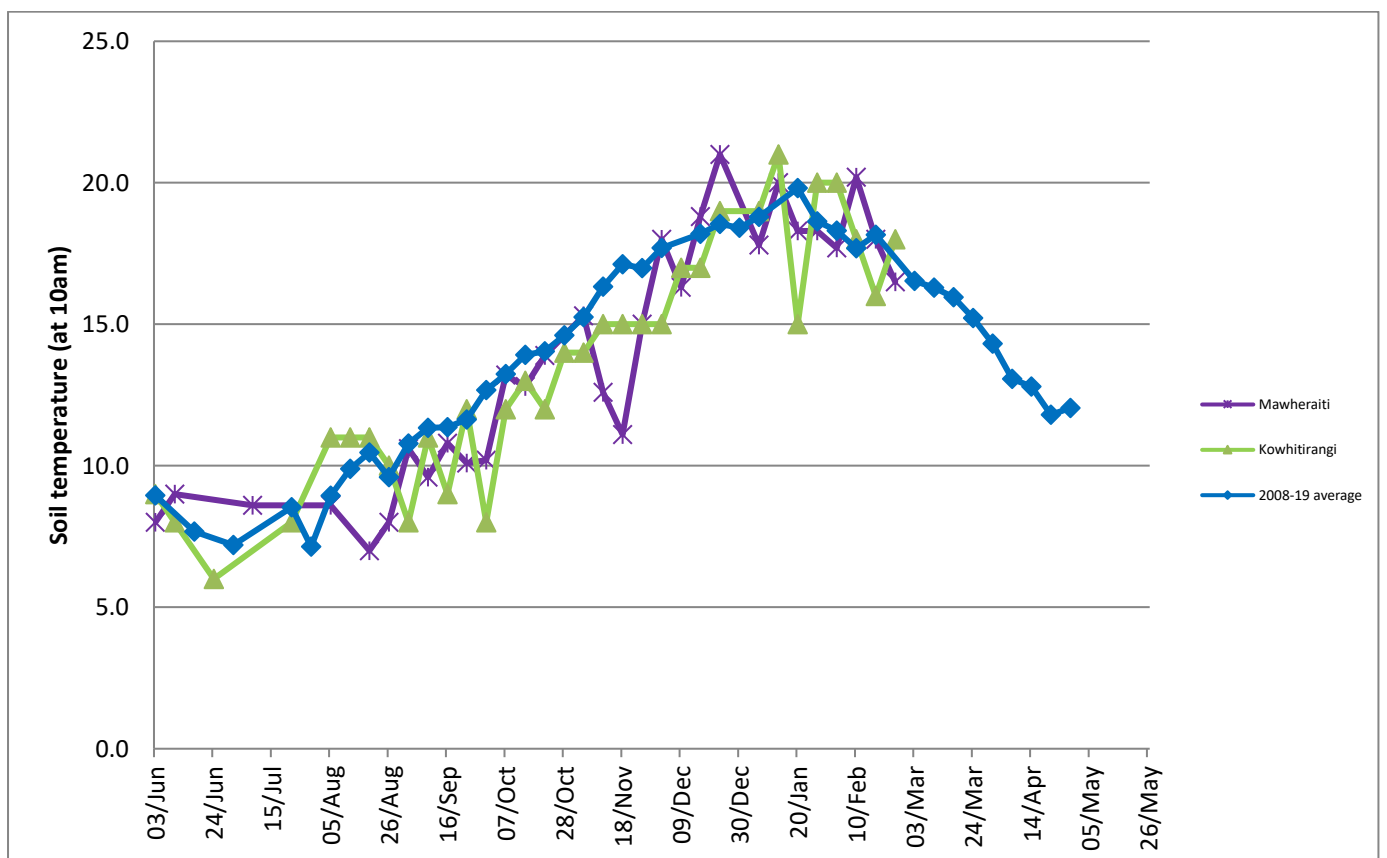
	Mawheraiti	Kowhitirangi
Average cover (kg DM/ha)	1989	1953
APC (17 February)	1970	1919
Rotation length (days)	26	29
Stocking rate	2.3	2.3
Percentage in milk	100%	100%
Milksolids kg/cow	1.67	1.58
Milksolids kg/ha	3.9	3.7
MS/cow (season to date)	335	317
MS/ha (season to date)	788	684
N (kg/ha) year to date	22	-
Current N application rate kg N/ha	188	176
	1 Feb	10 Feb
DM%	20.0	16.0
Pasture ME	12.3	12.5
Pasture NDF	41.7	40.8
Pasture CP	22.3	20.6
Target Intake (kg DM/cow/d)	18	18
Supplement (kg/cow/day)	0.0	2.4
Soil temperature (°C)	16.5	18
Growth Rate (kg DM/day)	29	18
Rainfall	0	0
Conditions for farmwalk	Fine, hot, no rain	Gusty winds, warm, rain
Notes:	Stu doing the irrigation battle	Farm needed rain

NB: pasture quality data are for 1 sample collected from each farm.

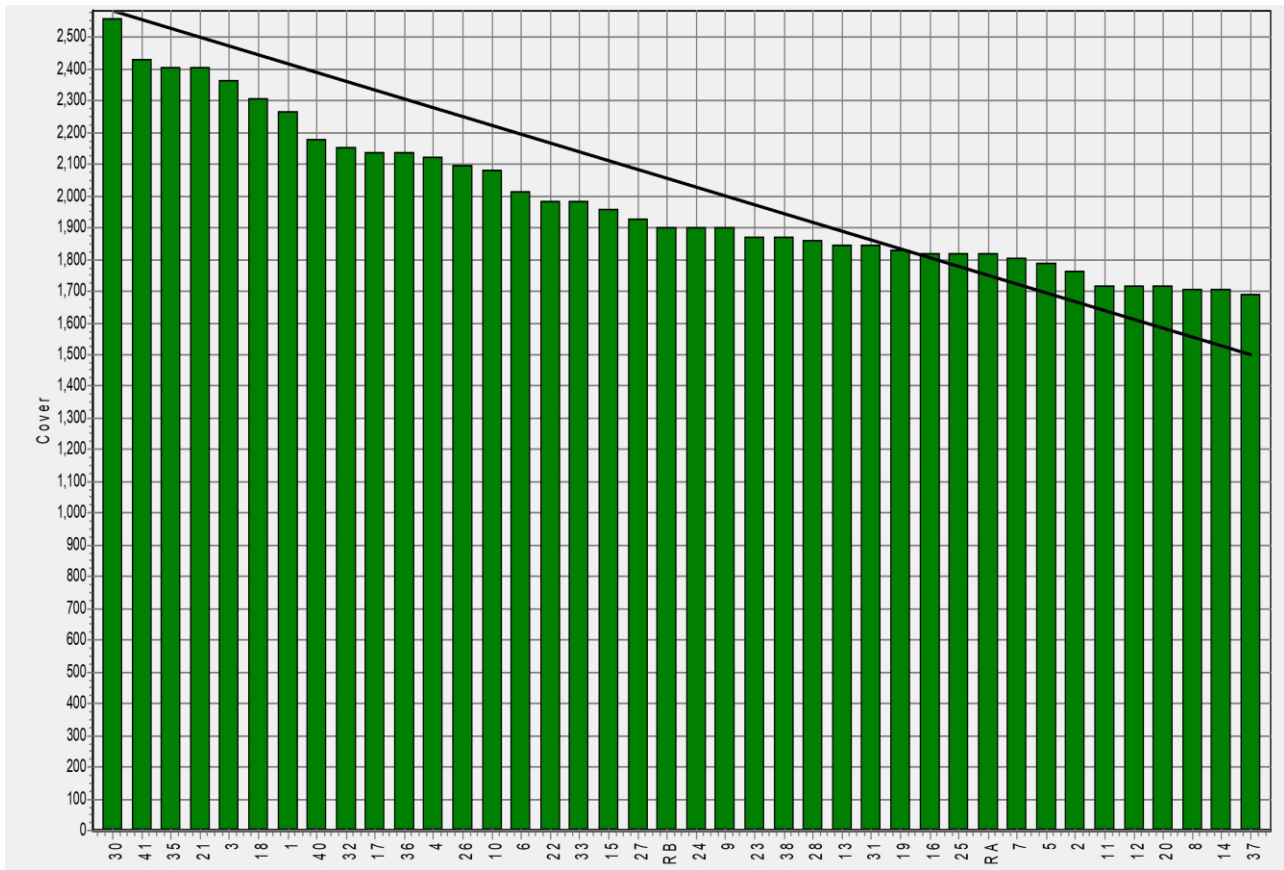
Weekly Pasture Growth Rates



Weekly Soil Temperature



Mawheraiti



Kowhitirangi

