

# Westland Monitor Farm Project

Weekly Update as at week ending Wednesday 24 March 2021

## CO Comment

Coming up at DairyNZ...

This week we will be in Westport and Karamea discussing down cows. Getting a down cow back on her feet and returned to the herd as quickly as possible is rewarding for you and the best outcome for the cow.

Down cows should be a priority no matter what else is happening on-farm. Cows that are down may be sore, uncomfortable, and stressed and it is our responsibility to make quick decisions to ensure they receive the correct care and are as comfortable as possible.

By correctly diagnosing, quickly treating, and nursing down cows at a high standard, you can maximise their chance of recovery and reduce stress for everyone during a busy calving season.

**Tony Dench**, DairyNZ Animal Care Extension Specialist, will be on hand to discuss all things down cow related. We will look at the prevention, diagnosis, treatment, and management of down cows.

For information on these events visit <https://www.dairynz.co.nz/events/?region=5454>

Dairy Industry Awards Regional field day is being held on April 7<sup>th</sup>. Come along and celebrate the achievements of the winners and entrants. Learn what the winners have done to cultivate their success and how they plan on maintaining that momentum to achieving their next goal.

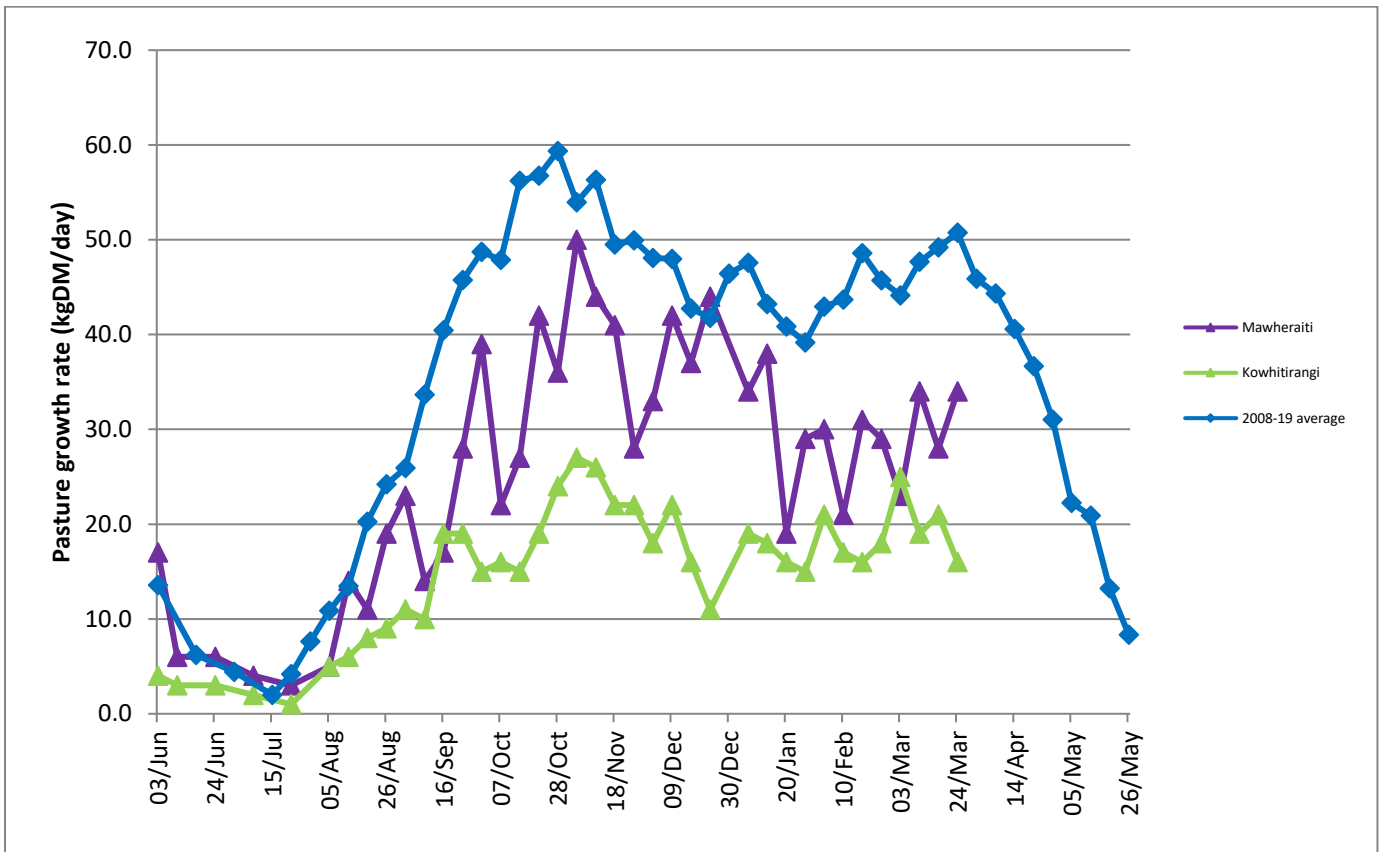
For more information on this visit <https://www.dairyindustryawards.co.nz/regions/west-coasttop-of-the-south/>

## Farm Summary

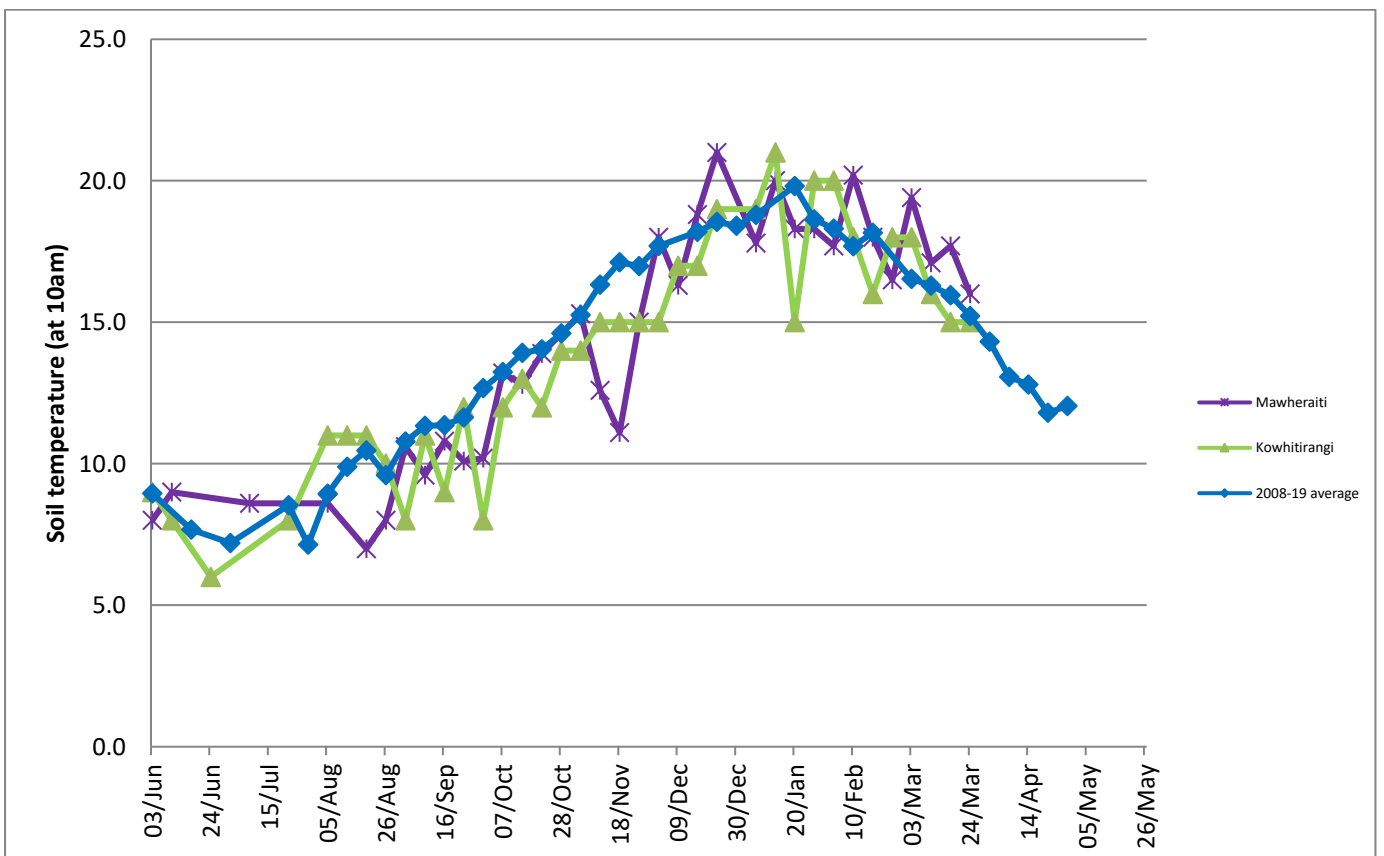
	Mawheraiti	Kowhitirangi
Average cover (kg DM/ha)	2065	1980
APC (17 March)	2039	2020
Rotation length (days)	27	33
Stocking rate	2.5	2.3
Percentage in milk	100%	100%
Milksolids kg/cow	1.53	1.37
Milksolids kg/ha	3.5	3.2
MS/cow (season to date)	378	356
MS/ha (season to date)	892	768
N (kg/ha) year to date	214	194
Current N application rate kg N/ha	22	0
	1 March	3 March
DM%	13.4	11.6
Pasture ME	11.4	11.7
Pasture NDF	47.3	51.8
Pasture CP	27.2	29.0
Target Intake (kg DM/cow/d)	18	18
Supplement (kg/cow/day)	0	2.4
Soil temperature (°C)	16.0	15.0
Growth Rate (kg DM/day)	34	16
Rainfall	13	0
Conditions for farmwalk	Fine, warm	Stunning day
Notes:	Crop ready to harvest. Super finished, farm looking great. Rachel Bland finished 2 <sup>nd</sup> diary trainee....well done Rachel!	Work continues with drains cleared. Pks look very good. Jeremy has an influx of young stock coming in May, so trying to set some high growth targets

NB: pasture quality data are for 1 sample collected from each farm.

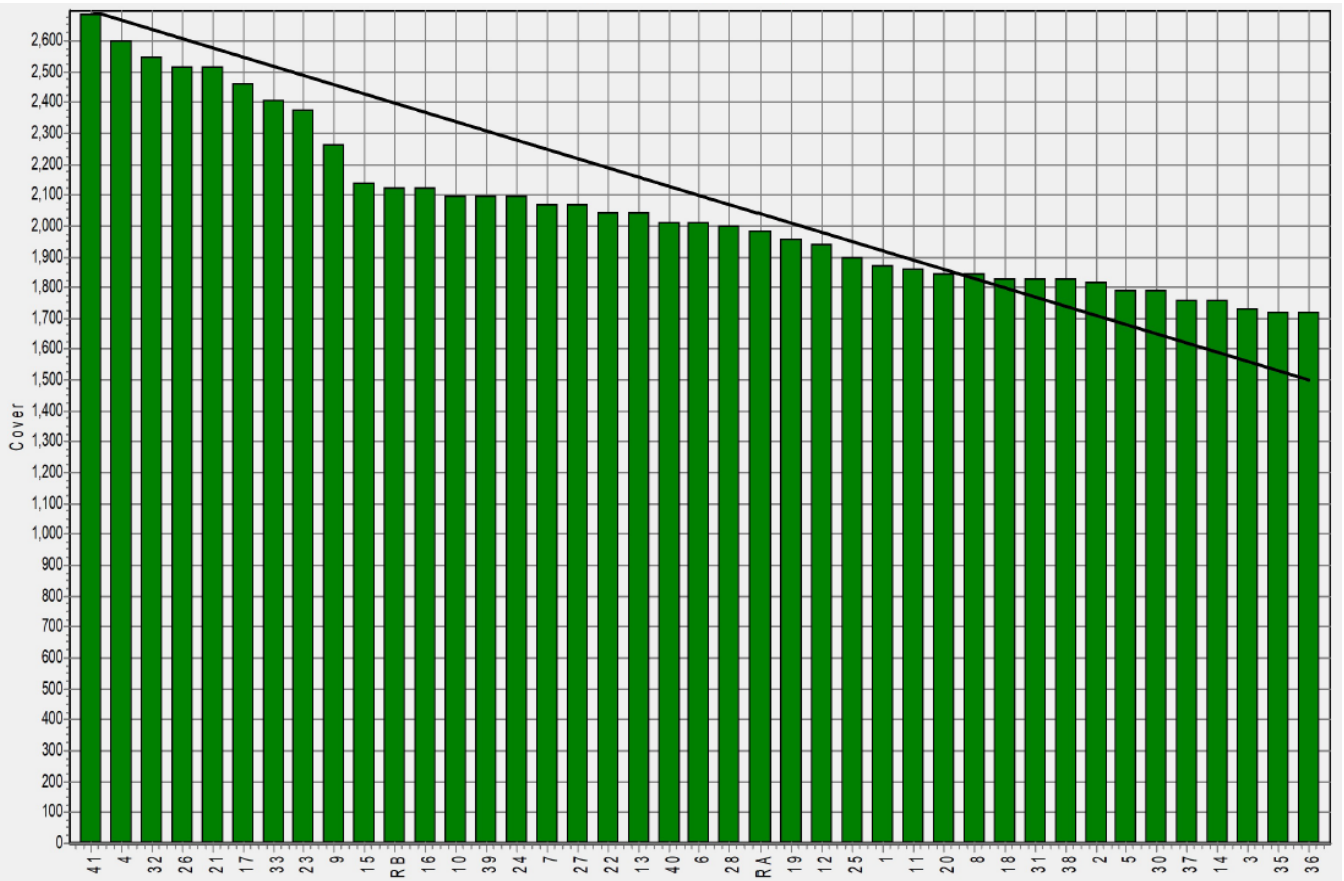
## Weekly Pasture Growth Rates



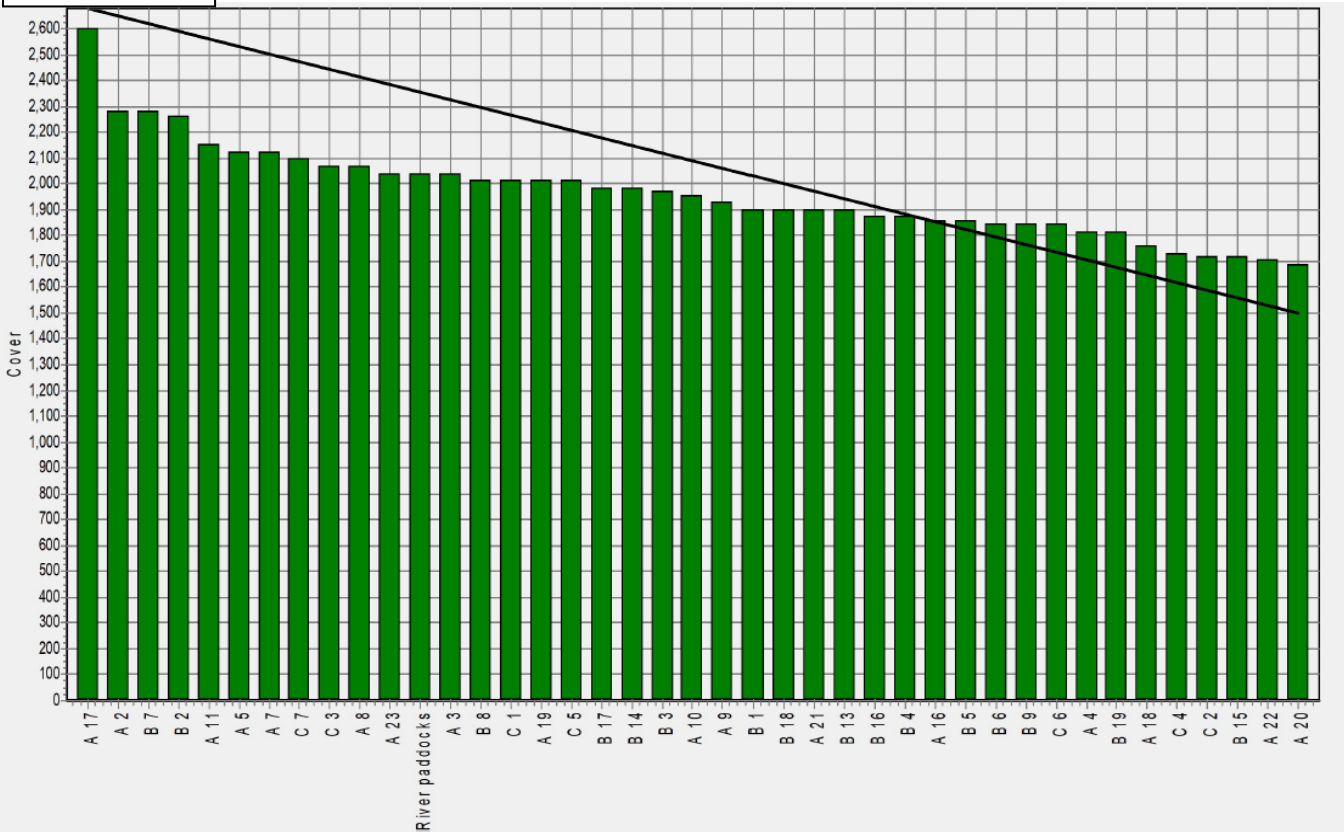
## Weekly Soil Temperature



### Mawheraiti



### Kowhitirangi





Kowhitrangi

Description	Date	RPM	% DM	% Prot	% Lipid	% ADF	% NDF	Sol Sugar	OMD %	MJME /kg
Paddock 17b	10/6/20	10.8	13.6	28.3	3.8	17.4	33.6	14.0	88.3	12.9
Paddock 13b	7/7/20	8.0	11.8	29.4	4.1	21.7	44.6	10.0	84.6	12.3
Paddock 3c	5/8/20	10.2	11.7	30.9	4.3	23.5	45.9	7.1	81.3	11.9
Paddock 4a	2/9/20	11.8	17.3	25.8	4.2	21.5	42.3	12.0	>85	>12.7
Paddock 1	14/10/20	9.7	12.9	31.7	4.0	23.9	49.0	6.8	83.2	12.1
Paddock 19b	4/11/20	11.8	10.9	27.6	3.6	27.4	54.0	3.9	78.3	11.4
Paddock 11a	2/12/20	11.4	15.4	26.7	3.3	24.2	42.0	7.9	82.2	12.0
Paddock 16a	13/1/21	15.7	16.0	18.8	3.3	28.0	49.2	9.9	76.9	11.2
Paddock 9b	10/2/21	15.7	16.0	20.6	3.4	22.6	40.8	12.7	>85	12.5
Paddock A2	3/3/21	14.6	11.6	29.0	3.9	26.3	51.8	3.0	80.1	11.7

\* Test analytes which have occurred as outliers on the NIRS calibration are indicated by \* and should be treated as an approximation only.