

# Westland Monitor Farm Project

Weekly Update as at week ending Wednesday 26 August 2020

## CO Comment

The favourable start to the season has an up and a down-side; growing grass may be easier than utilising it. Managing the increase in pasture allocation as calving progresses in difficult conditions, is a skill that requires discipline and planning. Some farms leave higher residuals than required for milking cows on the first rotation. The target residual is between 1500-1600 kg DM/ha. Achieving the target is important for two reasons...

- ensuring pasture is allocated to control the rate of decline of pasture cover on the farm, using the Spring Rotation Planner
- the pasture plant is left in a strong state to tiller and grow quality feed for subsequent rotations.

Under-grazing will reduce future growth as much as over grazing. Getting it right is important. Reasons why cows are leaving more pasture than target could be...

- more feed available than you estimated,
- the area (m<sup>2</sup>/cow) is too high.

*Another reason for under-grazing may be that the cow's appetite is not yet high enough to eat what you are targeting. While cows reach peak milk production in as little as four weeks after calving, peak intake does not happen until 7-10 weeks after calving. Therefore, average herd intake requirements lag behind peak intake of early calving cows.*

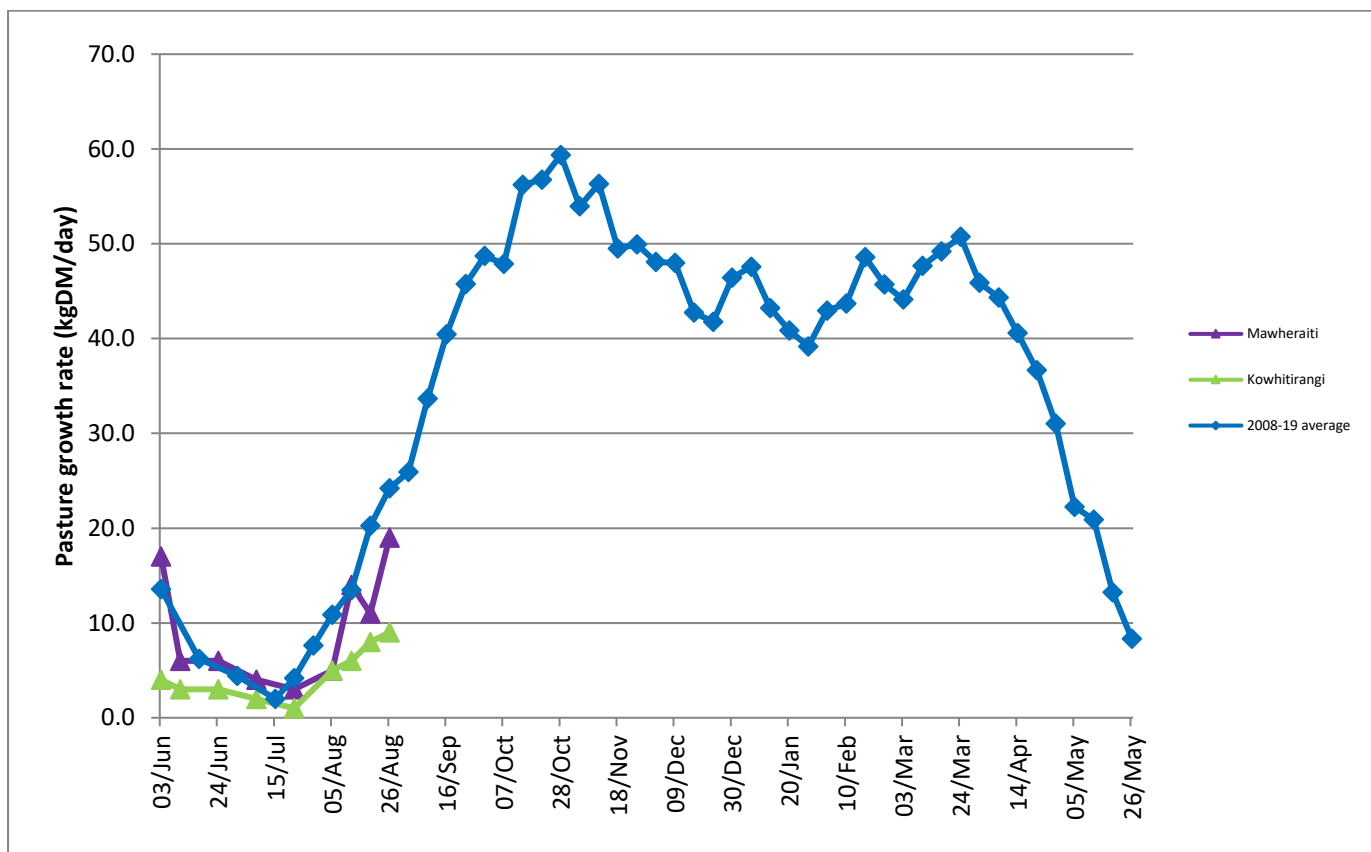
As your situation on farm can change quite quickly at this time of year, continue to monitor pasture growth, average pasture cover and herd demand, as these are still critical in allowing timely and proactive decision-making around pasture allocation and supplementary feed. If you have sufficient pasture, utilise it first and save supplement in case growing conditions change.

## Farm Summary

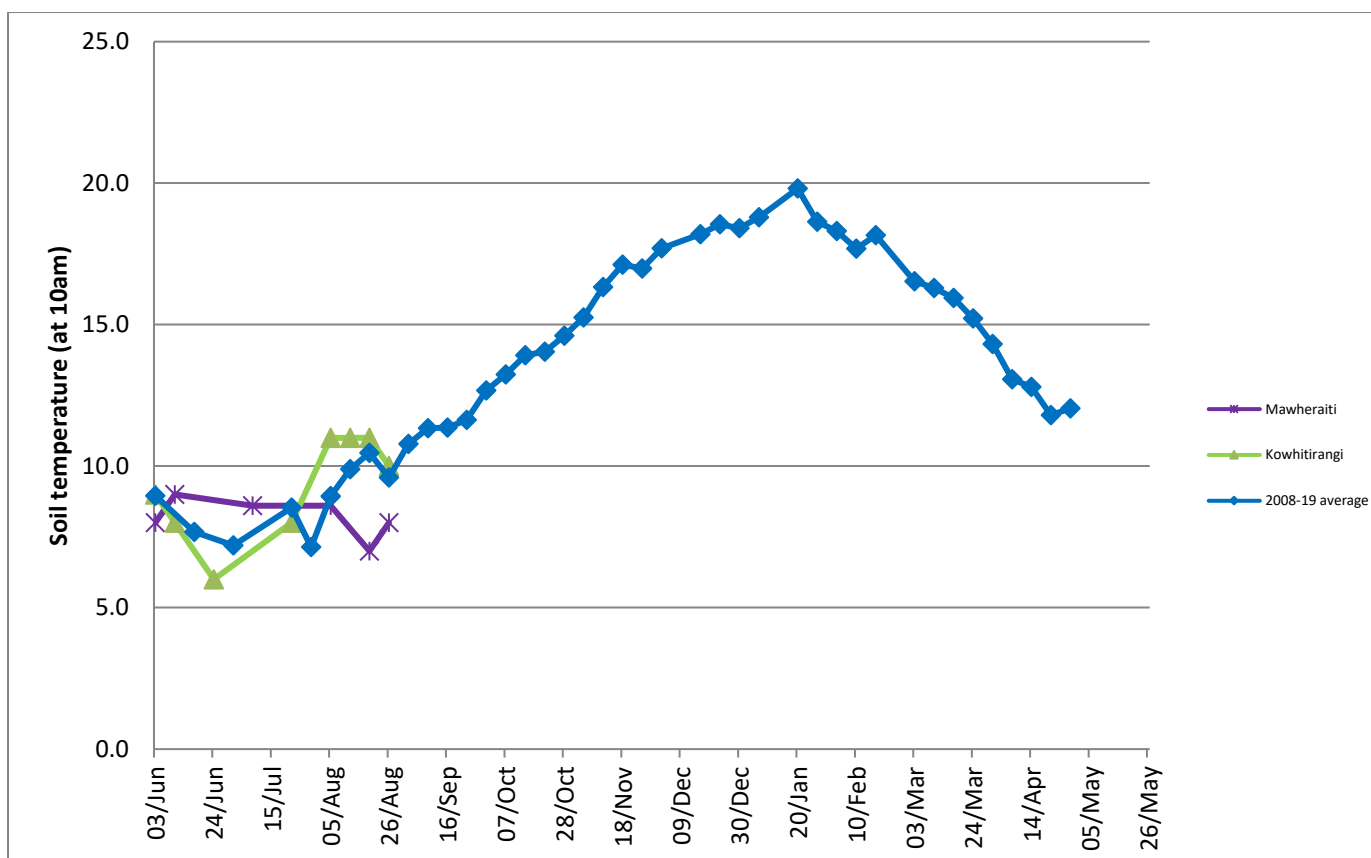
	Mawheraiti	Kowhitirangi
Average cover (kg DM/ha)	2287	1945
APC (19 August)	2277	1926
Rotation length (days)	78	63
Stocking rate		
Percentage in milk	55%	48%
Milksolids kg/cow	1.84	1.65
Milksolids kg/ha	2.0	1.4
MS/cow (season to date)	8	6
MS/ha (season to date)	20	13
N (kg/ha) year to date	35	22
Current N application rate kg N/ha	-	-
	3 Aug	5 Aug
DM%	12.4	11.7
Pasture ME	12.0	11.9
Pasture NDF	43.4	45.9
Pasture CP	31.7	30.9
Target Intake (kg DM/cow/d)	17	-
Supplement (kg/cow/day)	6	4
Soil temperature (°C)	8	10
Growth Rate (kg DM/day)	19	9
Rainfall	82	182
Conditions for farmwalk	Showers, fine, warm	Fine, freezing, been raining, fresh snow on mountains

NB: pasture quality data are for 1 sample collected from each farm

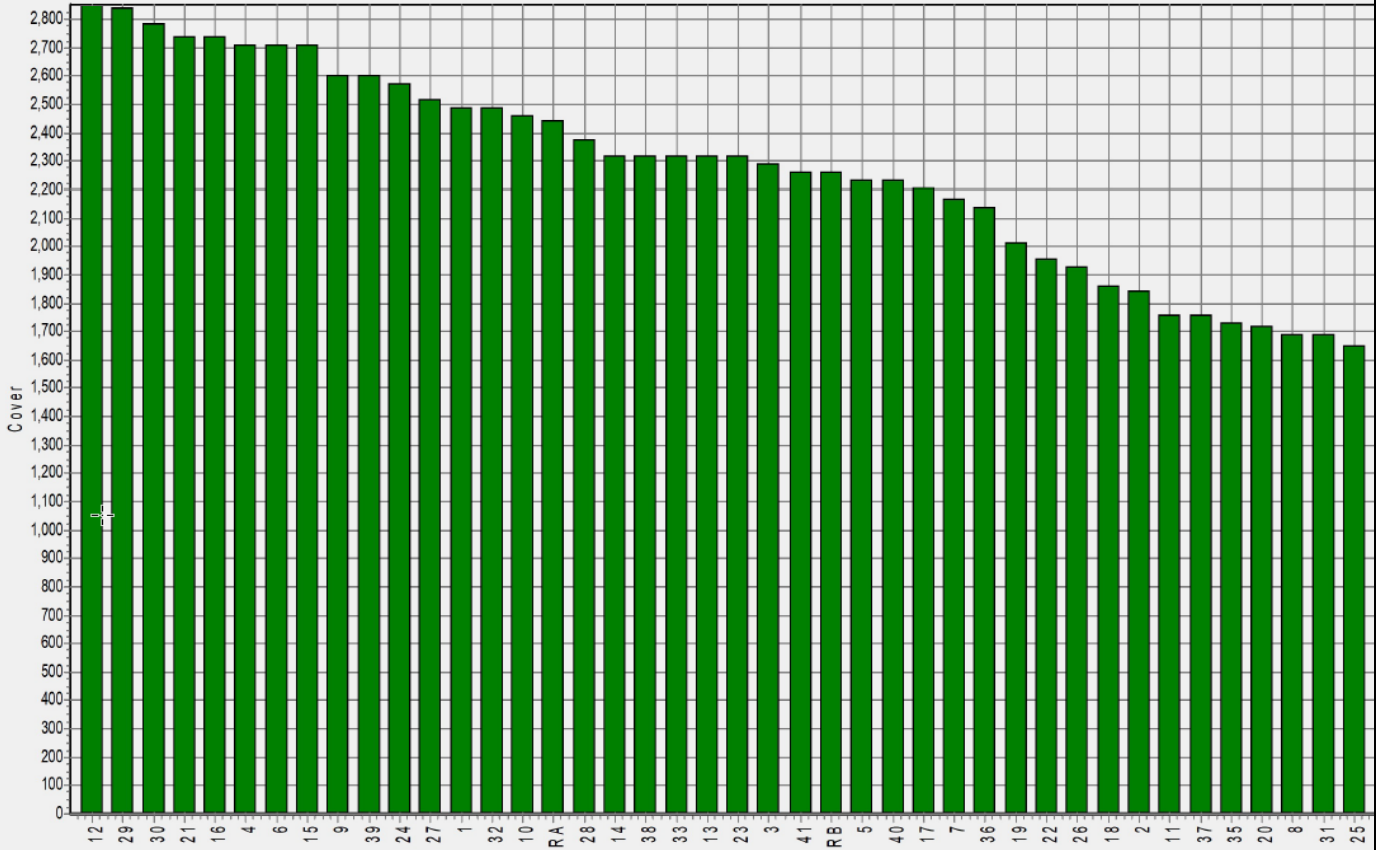
## Weekly Pasture Growth Rates



## Weekly Soil Temperature



## Mawheraiti



## Kowhitirangi

